

BILL OF MATERIAL

ITEM QTY	DESCRIPTION	MATERIAL
1	6" Head - 42" dia x 100" HGT x 0.875" THK	SA286-70M
2	5mm - 42" dia x 100" nom x 10'-0" LARG	SA286-70M
3	Weld Plate - 6" x 3/8" x 53' LARG	SA286-70M
4	Weld Plate - 3/8" THK	SA286-70M
5	Support Plate - 6" x 1/2" THK	SA286-70M
6	Base Plate - 6" x 1/2" x 36" LARG	SA286-70M
7	FRB Flange - 20" 300 ANSI x 14" OAL	SA286-70M
8	FRB Flange - 20" 300 ANSI	SA286-70M
9	FRB Flange - 20" 300 ANSI	SA286-70M
10	Flux Guide - 20" 300 ANSI	316SS
11	Flux Guide - 20" 300 ANSI	SA286-70M
12	FRB - 1/2" x 6"	SA286-70M
13	FRB - 1/2" x 6"	SA286-70M
14	FRB - 20" 300 ANSI x 100" HGT x 0.875" THK	SA286-70M
15	FRB - 20" 300 ANSI x 100" HGT x 0.875" THK	SA286-70M
16	FRB - 20" 300 ANSI x 100" HGT x 0.875" THK	SA286-70M
17	FRB - 20" 300 ANSI x 100" HGT x 0.875" THK	SA286-70M
18	FRB - 20" 300 ANSI x 100" HGT x 0.875" THK	SA286-70M
19	FRB - 20" 300 ANSI x 100" HGT x 0.875" THK	SA286-70M
20	FRB - 20" 300 ANSI x 100" HGT x 0.875" THK	SA286-70M
21	FRB - 20" 300 ANSI x 100" HGT x 0.875" THK	SA286-70M
22	FRB - 20" 300 ANSI x 100" HGT x 0.875" THK	SA286-70M
23	FRB - 20" 300 ANSI x 100" HGT x 0.875" THK	SA286-70M
24	FRB - 20" 300 ANSI x 100" HGT x 0.875" THK	SA286-70M
25	FRB - 20" 300 ANSI x 100" HGT x 0.875" THK	SA286-70M
26	FRB - 20" 300 ANSI x 100" HGT x 0.875" THK	SA286-70M
27	FRB - 20" 300 ANSI x 100" HGT x 0.875" THK	SA286-70M
28	FRB - 20" 300 ANSI x 100" HGT x 0.875" THK	SA286-70M
29	FRB - 20" 300 ANSI x 100" HGT x 0.875" THK	SA286-70M
30	FRB - 20" 300 ANSI x 100" HGT x 0.875" THK	SA286-70M
31	FRB - 20" 300 ANSI x 100" HGT x 0.875" THK	SA286-70M
32	FRB - 20" 300 ANSI x 100" HGT x 0.875" THK	SA286-70M
33	FRB - 20" 300 ANSI x 100" HGT x 0.875" THK	SA286-70M
34	FRB - 20" 300 ANSI x 100" HGT x 0.875" THK	SA286-70M
35	FRB - 20" 300 ANSI x 100" HGT x 0.875" THK	SA286-70M

NOTES:
 ALL SPUD LOCATIONS CHECK AND THREAD TO SPECS
 VESSEL WEIGHT APPROXIMATELY 4000 POUNDS
 ALL EXTERNAL WELDS TO BE SAW 3/8" FILED
 ALL INTERNAL WELDS TO BE SAW 1/4" FILED

REV	NO	DATE	DESCRIPTION	BY	CHKD	APPRD
1	01		AS BUILT	LW	GV	GV
2	02		CHANGED M TO A FRB & EDITED TEXT	GV	GV	GV
3	03		ADDED RQ REVISED LAYOUT & EDITED TEXT	GV	GV	GV
4	04		ISSUED FOR APPROVAL	GV	GV	GV
5	05		ISSUED FOR APPROVAL	GV	GV	GV

ASME 1998 ED. 2000 ADD CODE SEC. VIII DIV. 1

IMPACT TESTING EXCEPT FROM UCS68 (L) & UCS69 (L)
 NOT RT 1. CRG FULL LONG FILL
 FINISH: YES ISO-F FOR 75 MW

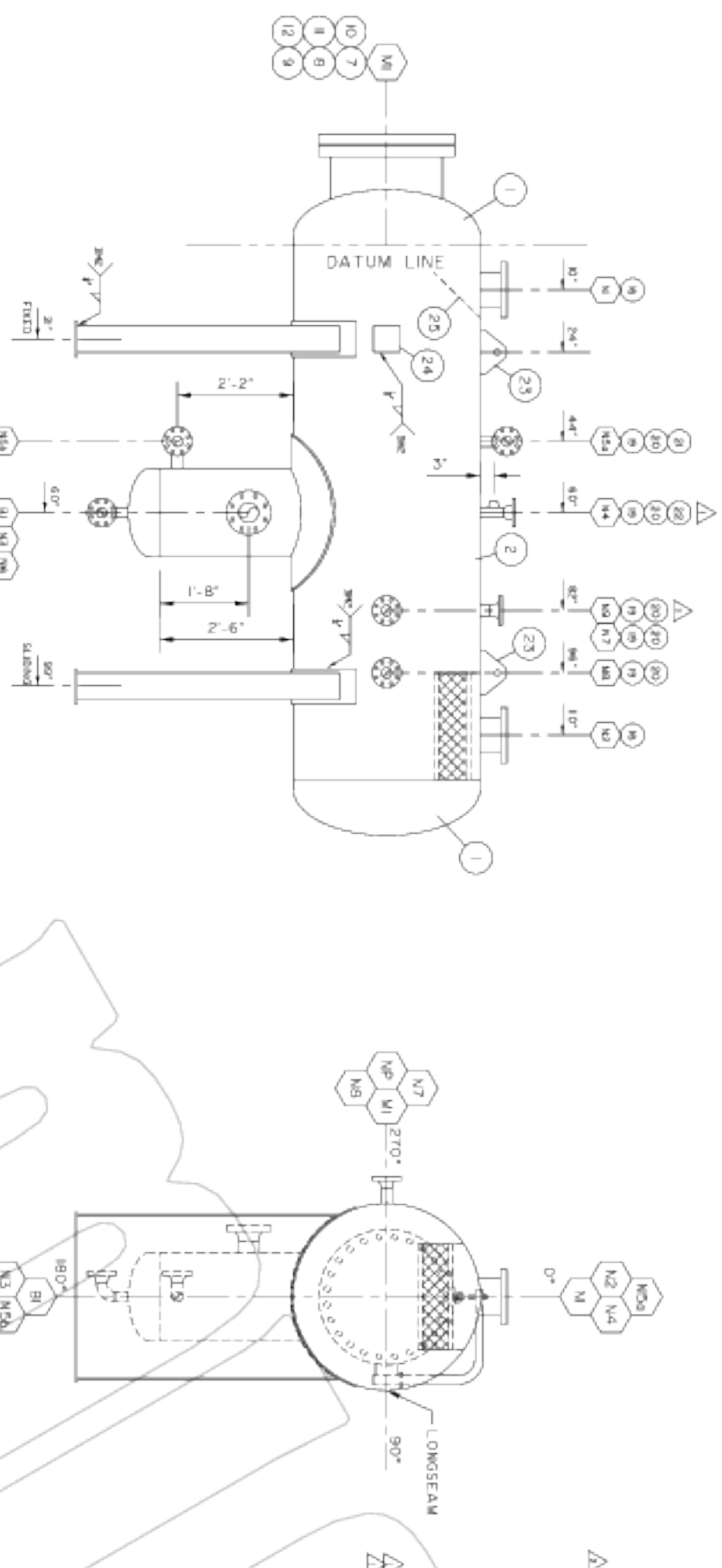
FRY: YES
 HEAD JOINT: 10
 MIN CALC: 0.082
 SHELL THK NOM: 1.00
 MIN CALC: 0.0703
 CO. HEADS: 0.025
 SHELL: 0.025

REGISTERED WELD PROCEDURE 5092
 VOLUME: 2.9 m³ 102 ft³
 720 psi at 100 °F
 720 psi at 720 psi

VESSL TYPE: HORIZONTAL
 MAMP: 4904 kg or 10800 lbs
 HYDROTEST: 6450 kg or 14250 lbs

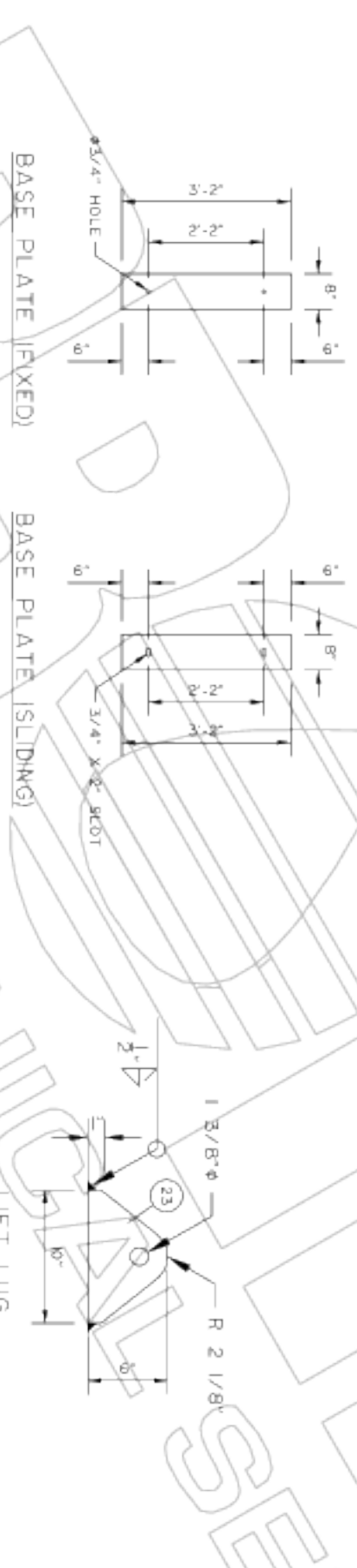
PROJECT: ANADARKO CANADA CORPORATION
 GRAHAM FIELD
 MECHANICAL SERVICES (SINO) LTD
 404, 905 23rd Street S.W. Medicine Hat
 Alberta, Canada, T1A 7G2 (403) 520-3442

TITLE: Δ42" x 10' x 720 psi SLUG CATCHER
 SERIAL NO: 15075
 DATE: 08/06/03

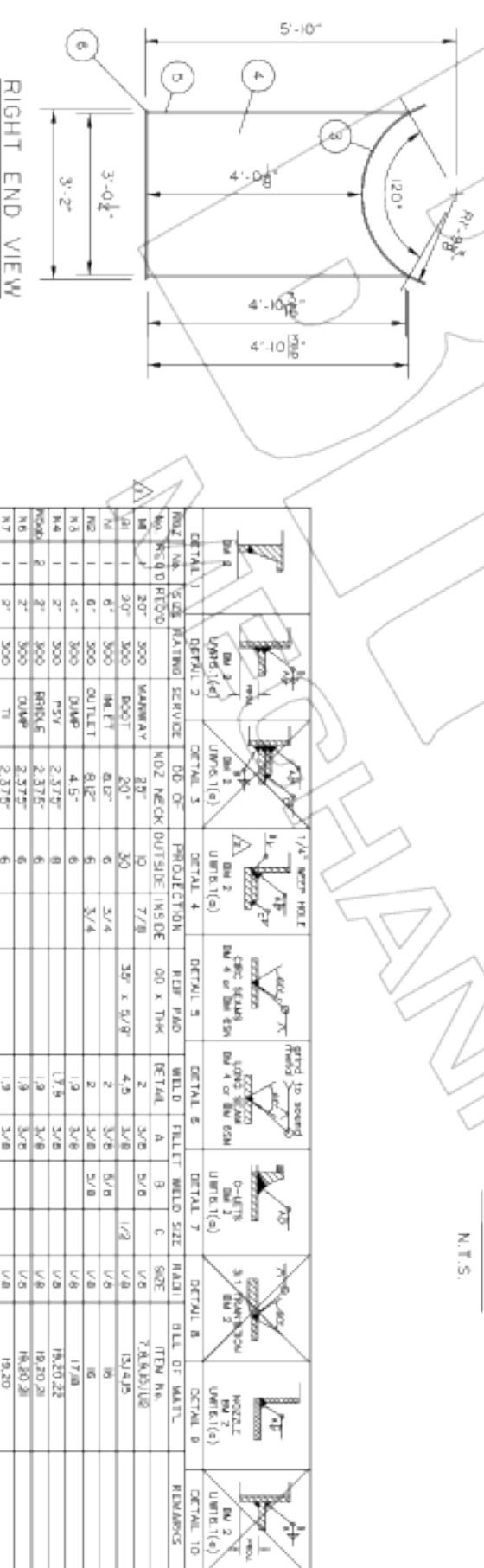


ELEVATION

RIGHT END VIEW



LIFT LUG
 N.T.S.



RIGHT END VIEW

NOZ. NO.	SIZE	MATERIAL	SERVICE	DD OF	PROJECTION	HEAT TREAT	WELD	FILET	WELD SIZE	HEAD	ITEM NO.	REMARKS
N1	20"	300	BOOTT	20"	30	30"	3/8	5/8	1/2	15A25		
N2	6"	300	HEAT	10"	6	3"	3/8	5/8	1/2	15A25		
N3	4"	300	OUTLET	8"	6	3"	3/8	5/8	1/2	15A25		
N4	2"	300	MSV	4.5"	6	3"	3/8	5/8	1/2	15A25		
N5	2"	300	BRKLS	2.375"	6	3"	3/8	5/8	1/2	15A25		
N6	2"	300	OUTLET	2.375"	6	3"	3/8	5/8	1/2	15A25		
N7	2"	300	TI	2.375"	6	3"	3/8	5/8	1/2	15A25		
N8	2"	300	FR	2.375"	6	3"	3/8	5/8	1/2	15A25		
N9	2"	300	FLWOOD BR	2.375"	6	3"	3/8	5/8	1/2	15A25		

DETAIL 1: 1/4" NOZ. HOLE
 DETAIL 2: NOZ. NECK INSIDE
 DETAIL 3: NOZ. NECK OUTSIDE
 DETAIL 4: 1/4" NOZ. HOLE
 DETAIL 5: SPEC. HEADS DM 4 OF BR 52M
 DETAIL 6: FILED TO SMOOTH LOWS SLOPE DM 4 OF BR 52M
 DETAIL 7: 0-1/8" FILET
 DETAIL 8: 3/16" NOZ. NECK
 DETAIL 9: NOZ. NECK
 DETAIL 10: NOZ. NECK