

BILL OF MATERIAL

ITEM	QTY.	DESCRIPTION	MATERIAL
1	8	RFWN Flange - 6" 300 ANSI sch 40	SA105N
2	4	RFWN Flange - 4" 300 ANSI sch 40	SA105N
3	2	RFWN Flange - 3" 150 ANSI sch 90	SA105N
4	3	RFWN Flange - 2" 300 ANSI sch 80	SA105N
5	4	Weld 90° EL - 6" sch 40 LR	SA234-WPB
6	3	Weld 90° EL - 4" sch 40 LR	SA234-WPB
7	1	Weld Red Tee - 3" x 3" x 2" sch 90	SA234-WPB
8	3	Weld 90° EL - 2" sch 80 LR	SA234-WPB
9	2	TOL - 1" 3000 psi	SA105N
10	2	TOL - 1/2" 3000 psi	SA105N
11	2	Pipe - 6" sch 40 x 20 1/8" Long	SA106B
12	1	Pipe - 6" sch 40 x 36 7/16" Long	SA106B
13	1	Pipe - 6" sch 40 x 22" Long	SA106B
14	1	Pipe - 4" sch 40 x 20 1/8" Long	SA106B
15	1	Pipe - 4" sch 40 x 20 3/4" Long	SA106B
16	1	Pipe - 4" sch 40 x 49 1/8" Long	SA106B
17	1	Pipe - 3" sch 80 x 15 3/4" Long	SA106B
18	1	Pipe - 2" sch 80 x 1 3/4" Long	SA106B
19	1	Pipe - 2" sch 80 x 5 1/8" Long	SA106B
20	1	Pipe - 2" sch 80 x 9 3/8" Long	SA106B
21	2		

NOTES:
 100% X-RAY REQUIRED
 HYDROTEST SPOOLS 1-7 AT 1080 PSI FOR 60 MIN.
 HYDROTEST SPOOL 8 AT 428 PSI FOR 60 MIN.
 ALL SPOOLS TO HAVE PWHT

REV.	NO.	DATE	DESCRIPTION	BY	CHKD	APP'D
2	1	02	AS BUILT	LW	GV	
1	06	30	06	ADDED SPOOL 7 & REVISED SPOOL 8	GV	GV
0	06	03	06	ISSUED FOR APPROVAL	GV	GV

BROMLEY MECHANICAL SERVICES (1985) LTD.

Box 404, 925 - 23rd Street S.W., Medicine Hat, Alberta, Canada, T1A 7G2 (403) 526-3142

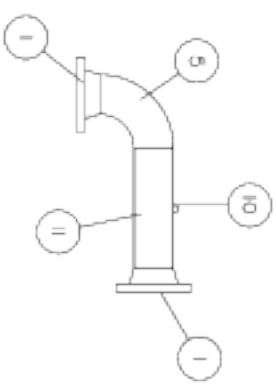
CLIENT **ANADARKO CANADA CORPORATION**

PROJECT **GRAHAM FIELD**

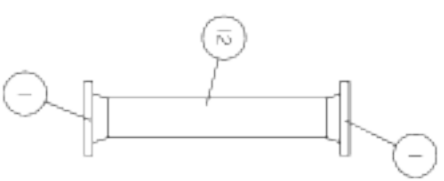
INLET SEPARATOR PACKAGE

TITLE **PIPING SPOOLS 1-8**

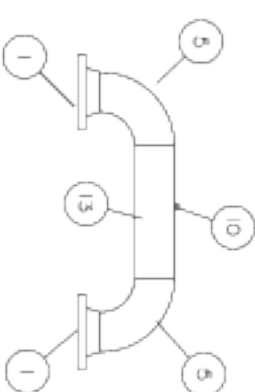
WO No.: 14217
 Drawn by: G. VANDERMOLEN REV. No.: 2 DATE: MM/DD/YY 01/11/02
 DATE: MM/DD/YY 08/03/01 SCALE: 3/8"=1" CAD No.: 14217-SPOOL



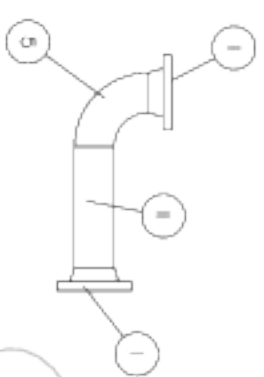
SPOOL No. 1



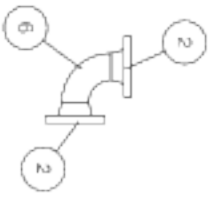
SPOOL No. 2



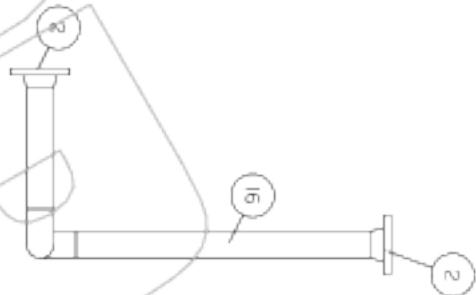
SPOOL No. 3



SPOOL No. 4



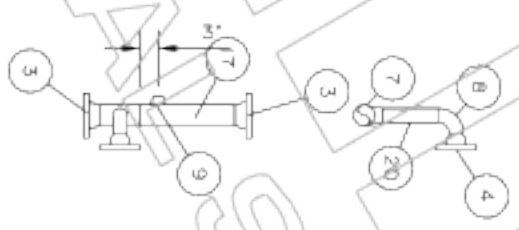
SPOOL No. 5



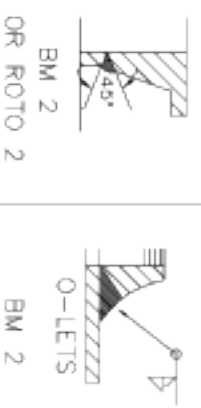
SPOOL No. 6



SPOOL No. 7



SPOOL No. 8



BM 2



BM 2