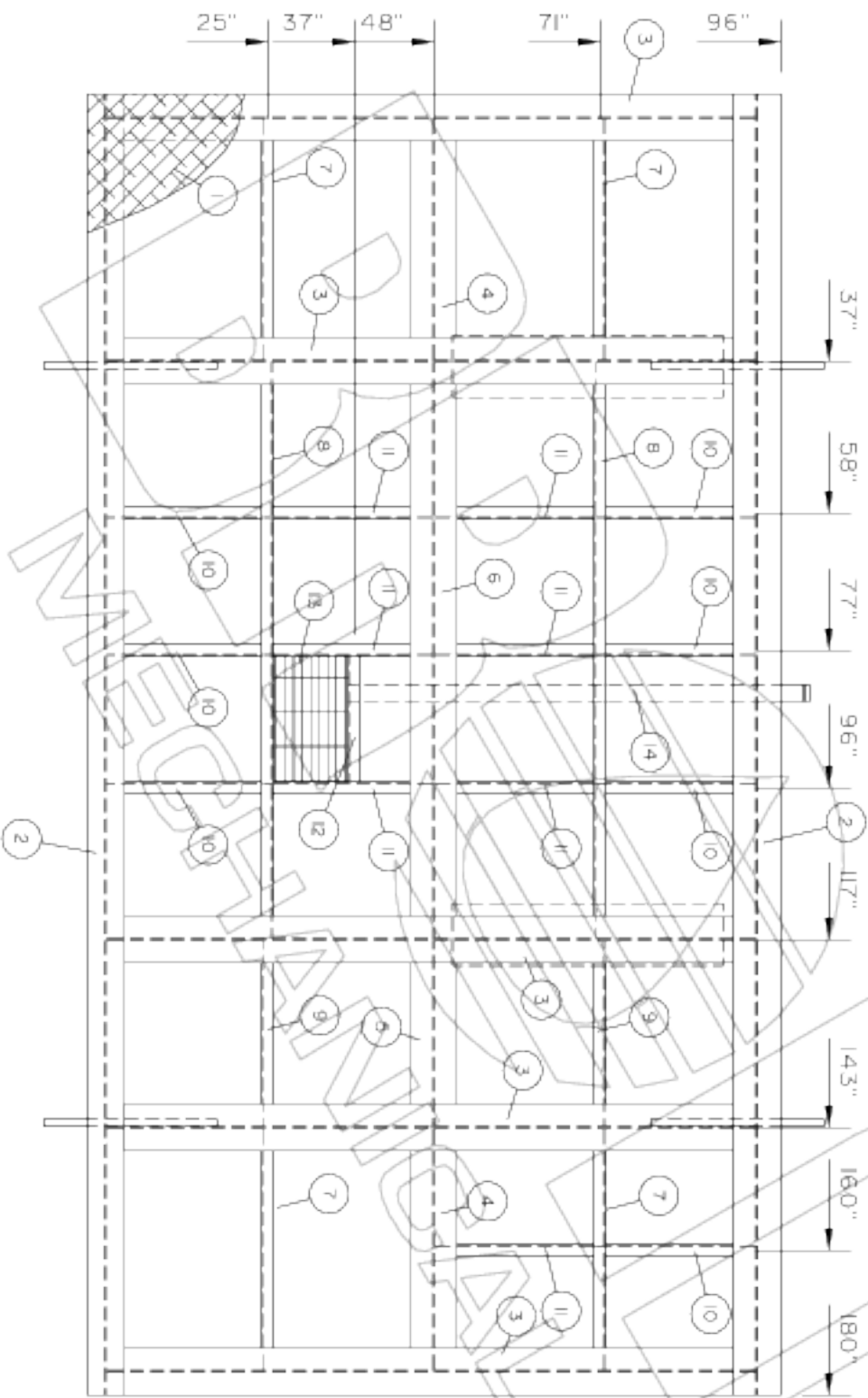


LIFT LUG DETAIL
SCALE N.T.S.



BILL OF MATERIAL

ITEM	QTY.	DESCRIPTION	MATERIAL
1	120'	Checker Plate - 3/16" THK. 18" x 15'	
2	2	Beam - WB X 18 X 15'-0" Long	
3	5	Beam - WB X 18 X 89 7/8" Long	
4	2	Beam - WB X 18 X 33 1/2" Long	
5	1	Beam - WB X 8 X 25 3/4" Long	
6	1	Beam - WB X 18 X 79 3/4" Long	
7	4	Channel - C4 X 5.4 X 33 1/2" Long	
8	2	Channel - C4 X 5.4 X 79 3/4" Long	
9	2	Channel - C4 X 5.4 X 25 3/4" Long	
10	7	Channel - C4 X 5.4 X 20 13/16" Long	
11	7	Channel - C4 X 5.4 X 23 1/2" Long	
12	1	Channel - C4 X 5.4 X 17 7/16" Long	
13	2'	Bar Grating - 1" x 3/16"	
14	1	Pipe - 2" Sch 80 X 64" Long	SA106B
15	4	Lift Lug - 6" x 1" x 24" Long 2" Hole	
16	46'	Flat Bar - 3" x 1/4" (Place 2" From Edge)	
17			
18			
19			
20			

NOTE:
SKID WEIGHT APPROXIMATELY 4,900 POUNDS

REV.	NO.	DATE	DESCRIPTION	BY	CHK'D	APP'D
2	01	02	AS BUILT	LW	GV	
1	10	24	CHANGED BEAM SIZE TO W8X18 & EDITED TEXT	GV	GV	GV
0	08	03	ISSUED FOR APPROVAL	GV	GV	GV

BROMLEY MECHANICAL SERVICES (1985) LTD.
 Box 404, 925 - 23rd Street S.W., Medicine Hat, Alberta, Canada, T1A 7G2 (403) 526-3142

CLIENT
 ANADARKO CANADA CORPORATION

PROJECT
 GRAHAM FIELD
 INLET SEPARATOR PACKAGE

TITLE
 8'-0" X 15'-0" OILFIELD SKID

C.R.N.: W.O. No.: 14217 SERIAL No.:
Drawn by: G. VANDERMOLEN REV. No.: 2 DATE: 08/03/01
DATE: 08/03/01 SCALE: 1/2"=1' CAD No.: 14217-SKID