

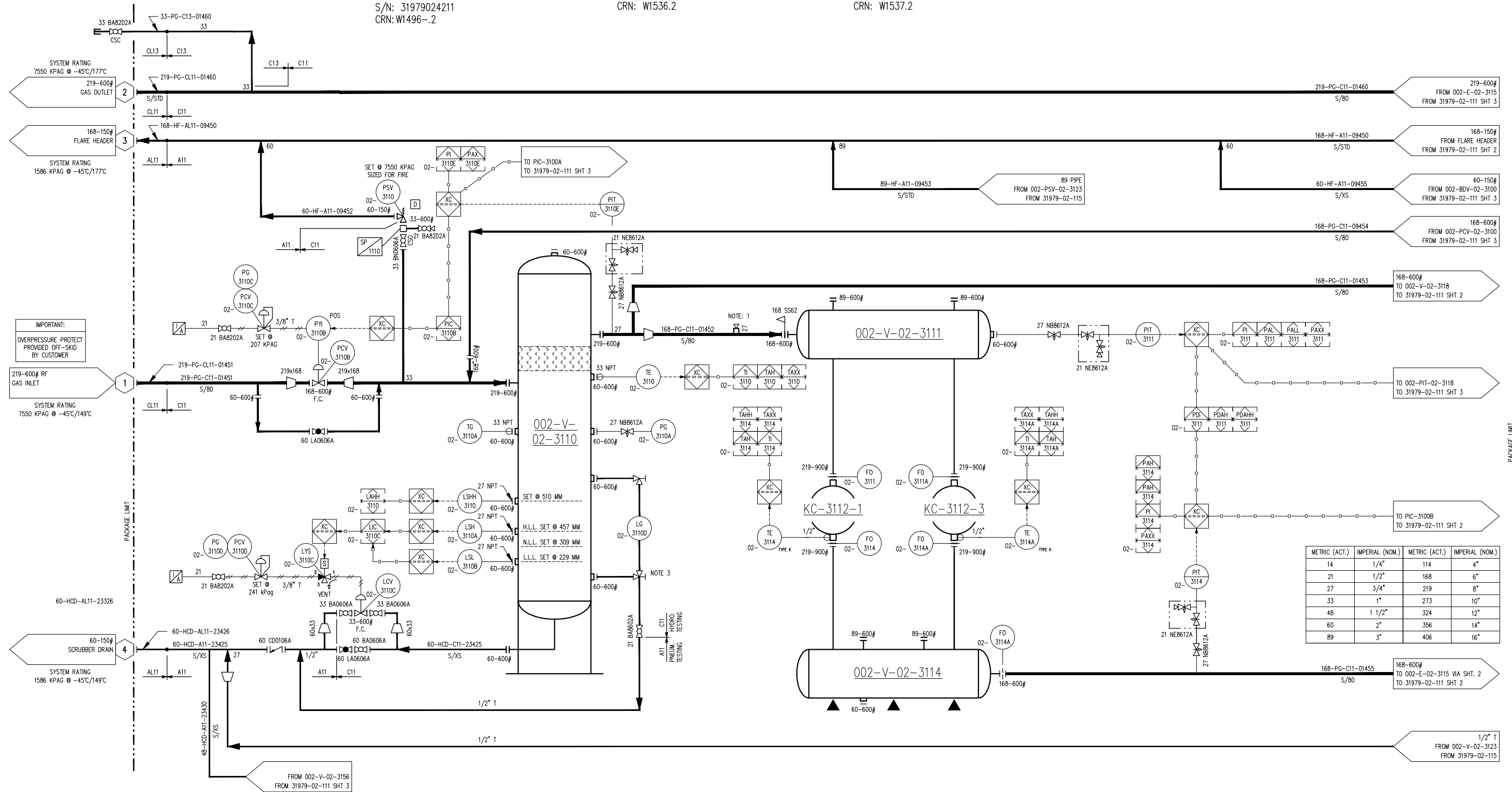
MFG: ENERFLEX LTD.  
SIZE: 914mm(36") OD X 2641mm(104") S/S  
MWPT: 8963 KPAG @ 149°C (1300 PSIG @ 300°F)  
MDMT: -29°C @ 8963 KPAG (-20°F @ 1300 PSIG)  
CA: 1.6mm(1/16")  
MATERIAL: CARBON STEEL  
ELEMENTS: VANE PACK/MESH ASSEMBLY 304SS  
S/N: 31979024211  
CRN: W1496-2

MFG: ENERFLEX LTD.  
SIZE: 508mm(20") OD X 2032mm(80") S/S  
MAWP: 8963 KPAG @ 149°C (1300 PSIG @ 300°F)  
MDMT: -29°C @ 8963 KPAG (-20°F @ 1300 PSIG)  
CA: 1.6mm(1/16")  
MATERIAL: CARBON STEEL  
S/N: 31979024220  
CRN: W1536.2

MFG: ENERFLEX LTD.  
 SIZE: 508mm(20") OD X 3175mm(125") S/S  
 MAWP: 8860 KPAG @ 177°C (1285 PSIG @ 350°F)  
 MDMT: -29°C @ 8860 KPAG (-20°F @ 1285 PSIG)  
 CA: 1.6mm(1/16")  
 MATERIAL: CARBON STEEL  
 S/N: 31979024222  
 CRN: W1537.2

MFG: ARIEL  
MODEL: 9 3/4 DM  
SIZE: 9.750" BORE  
MAWP: 11721 KPAG (1700 PSIG)  
THROW: #1  
S/N: C-145871

MFG: ARIEL  
MODEL: 9 3/4 DM  
SIZE: 9.750" BORE  
MAWP: 11721 KPAG (1700 PSIG)  
THROW: #3  
S/N: C-145870

NAME T.WELSH DATE MAY 28/14

1. VIEW POINT FOR BOROSCOPE. MOUNT CLOSE TO THE STRAINER.
2. LEVEL GAUGES TO HAVE 45 DEGREE FITTING.

5	FINAL AS BUILT	MAY 28/14	TW	LD	DATE	JAN 23/13	SCALE	NTS	
4	FINAL AS BUILT	JAN 02/14	CS	LD	DRAWN BY	G.PAHL	CHECKED BY	S.GURI	APPROVED BY
3	FINAL AS BUILT	NOV 13/13	AR	LD	PROJECT MANAGER		PROJECT ENGINEER		
2	REVISED TAGGING	AUG 26/13	AT	LD	B.MINSHULL		S.GURI		
1	ISSUED FOR CONSTRUCTION	JUL 03/13	CS	SG	CUST PO	410000964			
0	ISSUED FOR CONSTRUCTION	APR 19/13	AT	SG					
REV	DESCRIPTION	DATE	BY	APR	APEGA PERMIT No:	P8651	OPER. CODE.		

DEVON CANADA  
FERRIER CPF DEEP CUT FEED  
CATERPILLAR G3606LE  
ARIEL JGD/4-1 SWEET

**ENERFLEX**  
Calgary, Alberta,  
Canada

P & I DIAGRAM  
PROCESS GAS  
STAGE #1

DWG NO	31979-02-111
-----------	--------------

SHT	1	R
-----	---	---