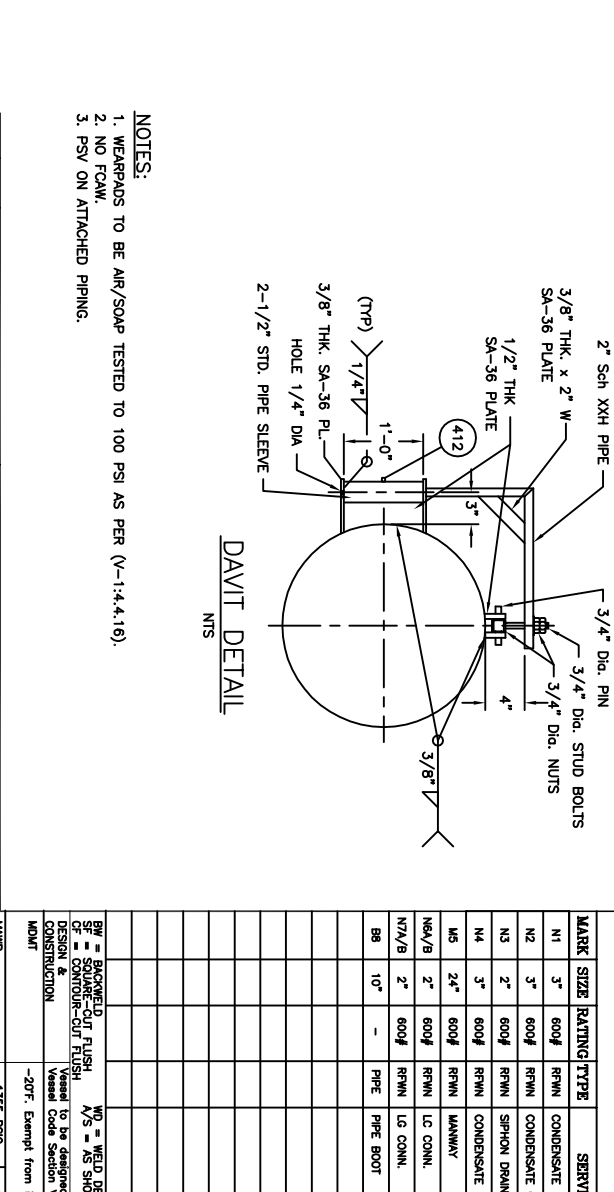
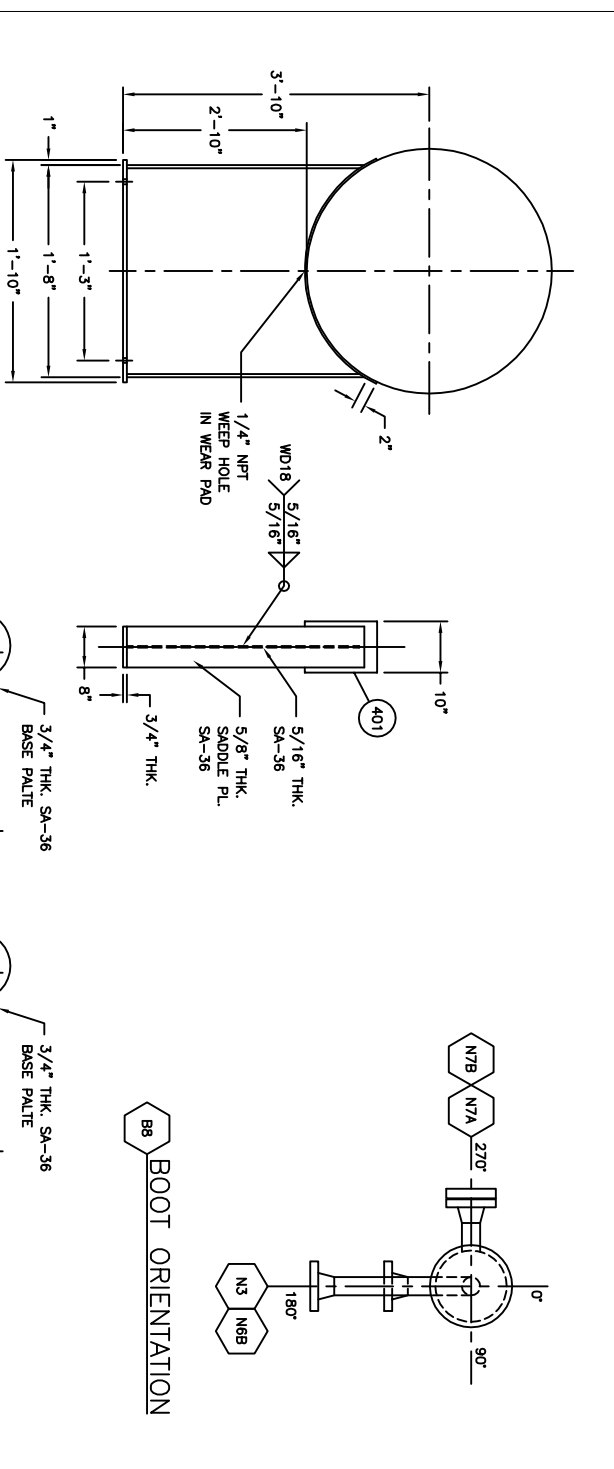
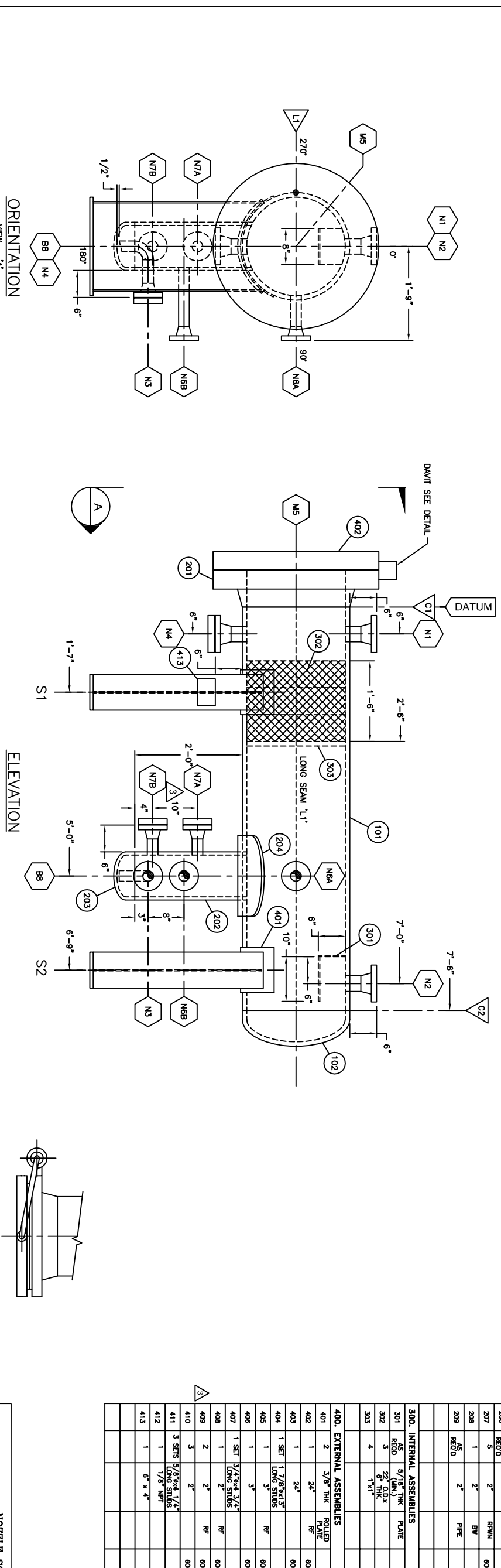
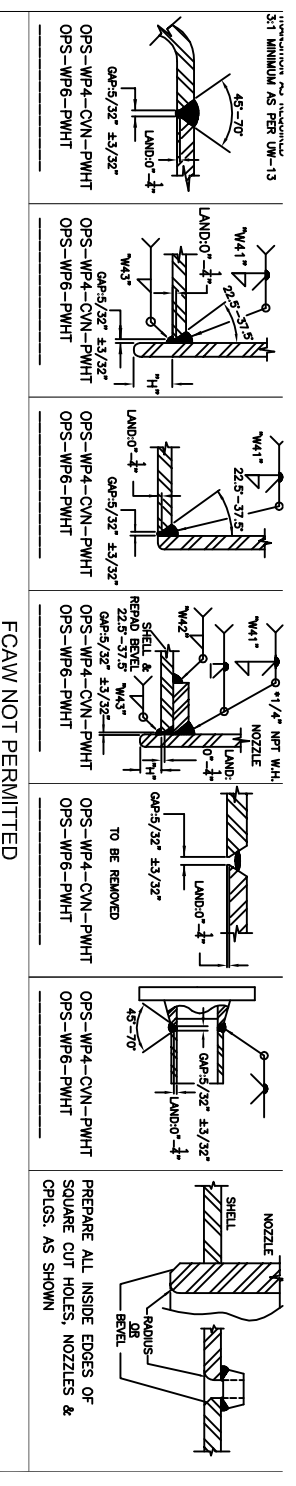


3/16 MINIMUM AS PER UG-113



NOZZLE SCHEDULE

MARK	SIZE	RATING	TYPE	SERVICE	W.D.	W41	W42	W43 (MIN.)	PROJ.	FRID.
N1	3"	600#	RHM	CONDENSATE INLET	9A.5,14	1 1/4"	-	BW	CF	N/S
N2	3"	600#	RHM	CONDENSATE OUTLET	9A.5,14	1 1/4"	-	BW	CF	N/S
N3	2"	600#	RHM	SIPHON DOWN	9A.5,14	5/8"	-	BW	N/S	N/S
N4	3"	600#	RHM	CONDENSATE RECYCLE	9A.5,14	1 1/4"	-	BW	CF	N/S
N5	2 1/2"	600#	RHM	MANWAY	1	-	-	-	-	-
N6A/B	2"	600#	RHM	LC CONN.	9A.5,14	3/8"	-	BW	SF	N/S
N7A/B	2"	600#	RHM	LC CONN.	9A.5,14	3/8"	-	BW	SF	N/S
N8	10"	-	PIPE	PIPE BOOT	1.2C,14	5/8"	5/8"	BW	CF	N/S

DESIGN DATA

DESIGNER: W.D. DESIGN

CHECKER: AS SHOWN

CONSTRUCTION: Vessel to be designed and constructed in accordance with ASME Boiler and Pressure Vessel Code Section VIII, Div. 1

Code Year: 2001

Adopted: 2001

3692V-24.DWG

REVISIONS

No.	DATE	REVISIONS	BY
0	2/27/2002	PRELIMINARY	O.P.
1	2/28/2002	CHECKED BY PE/OC	O.P.
2	3/6/2002	ISSUED FOR CONSTRUCTION	O.P.
3	3/22/2002	AS BUILT	O.P.

NOTES:

- WEARPADS TO BE AIR/SOAP TESTED TO 100 PSI AS PER (V-1-4.1.16).
- NO FCAM.
- PSV ON ATTACHED PIPING.

DAVIT DETAIL

SPECIAL MATERIAL CONSULT OCS/SPES

COLOUR CODE: WHITE

DWG. RELEASE

FABRICATION COPY NO. ___ OF ___

DATE: _____

SIGNED: _____

ENGINEERS RECORD

NAME	DATE
DRAWN BY: O'Neill Perreia	Mar. 26, 2002
CHECKED BY:	
APPROVED BY:	

CLIENT: PAN CANADIAN ENERGY

PROJECT: 42" O.D. x 15'-0" S/S INLET SEPARATOR & CONDENSATE CONDENSER PACKAGE (0-015)

TITLE: 24" O.D. x 7'-6" S/S CONDENSATE COND

Scale: JOB No. JM-02-3692 DWG. No. V-02-3692-1