

MATERIAL LIST tables for various components including GASKET 2" 150# RF 1/8" THICK, FLANGE BLIND 3" 150#, and various pipe fittings and valves.

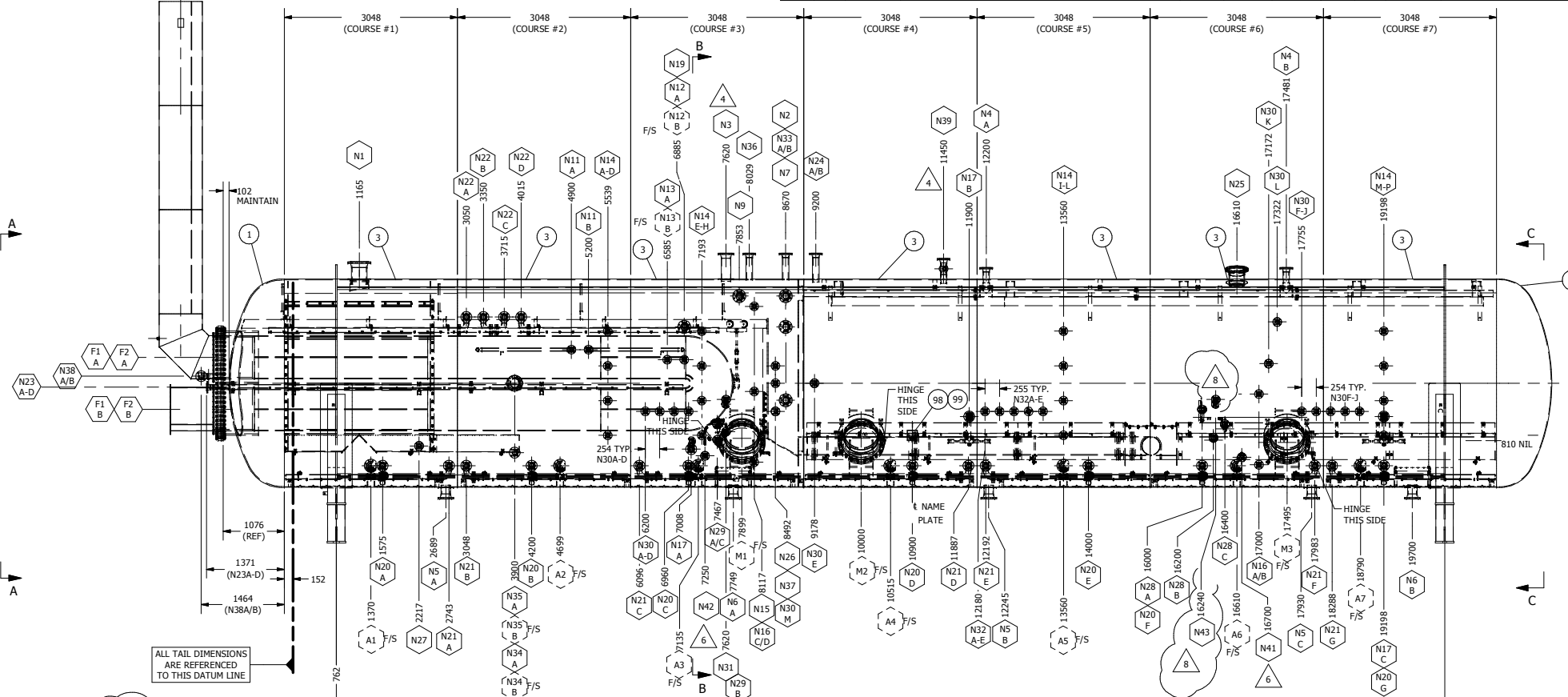


Table of nozzle specifications including nozzle ID, description, material, dimensions, and notes. Columns include NOZ. ID, QTY, SERVICE, NPS, CLASS, TYPE, etc.

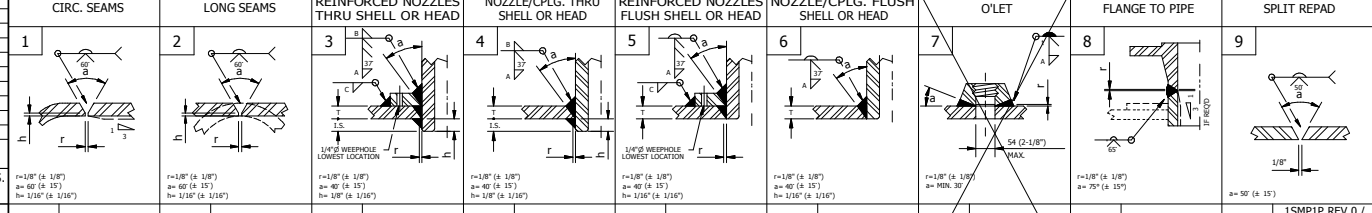
MATERIAL NOTES: M1. MATERIAL & FORMING SHALL MEET THE REQUIREMENTS OF THE LATEST EDITION OF ASME SECT. VIII, DIV. 1 & ASME SECT. 2, PART D. M2. FLANGES SHALL BE IN ACCORDANCE WITH ASME B16.5...

FABRICATION NOTES: F1. UNLESS OTHERWISE NOTED ALL BOLT HOLES SHALL STRADDLE THE NATURAL CENTERLINES OF THE VESSEL. F2. ALL INTERNAL & EXTERNAL WELD SIZE & TYPE SHALL BE AS NOTED ON THE FABRICATION DRAWINGS...

CUSTOMER SPECIFICATIONS table listing various standards and requirements such as ASME SECTION VIII, DIV. 1, 2007 EDITION, 09 AD.

REVISION HISTORY table with columns for REV, DATE, BY, CHKD, APP, DESCRIPTION, and CALC. REV.

DESIGN DATA table providing technical specifications like CODE: ASME SECTION VIII, DIV. 1, 2007 EDITION, 09 AD, and various test requirements.



Project information including company name (NATCO), project name (MECHANICAL HEATER-TREATER (V-100F)), location (SOUTH BRINTNELL BATTERY), and drawing details.

NOZZLE SCHEDULE table with columns for NOZZLE ID, QTY, SERVICE, NPS, CLASS, TYPE, etc.

Additional notes and specifications at the bottom of the page, including references to standards and drawing conventions.