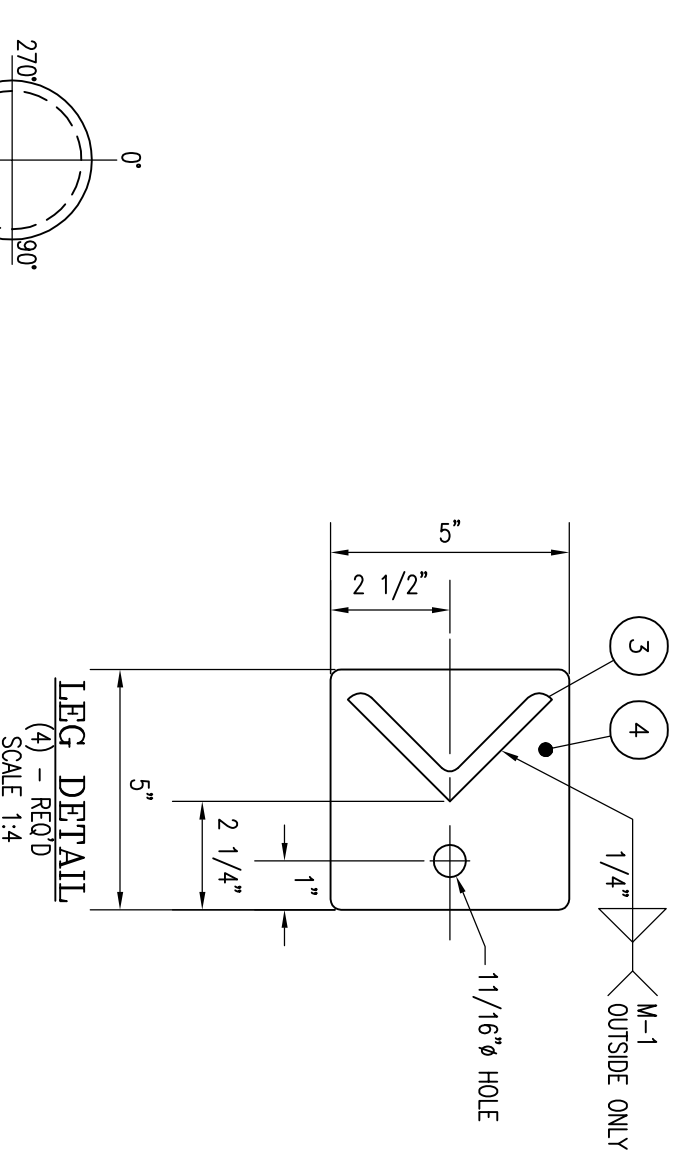
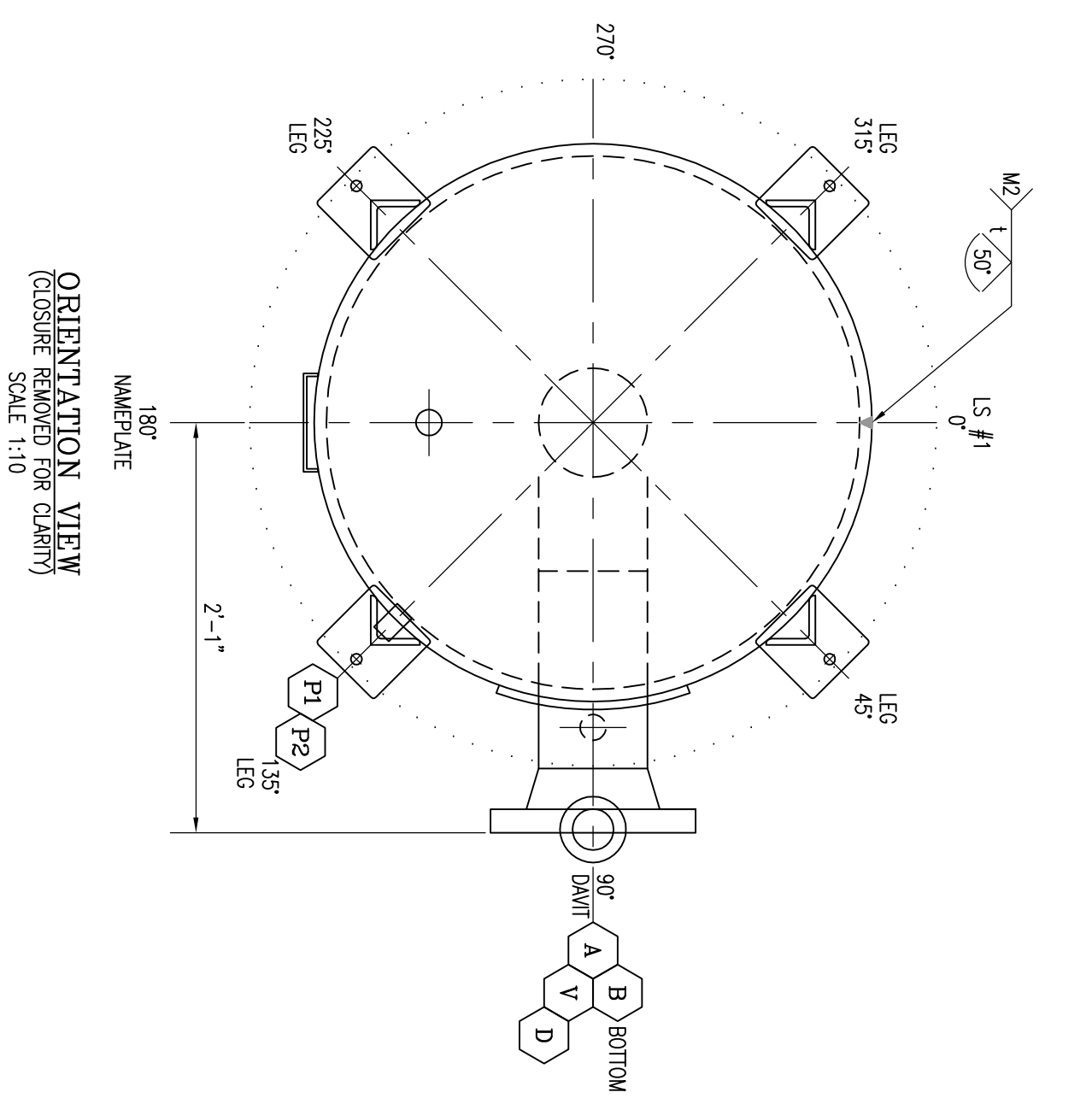
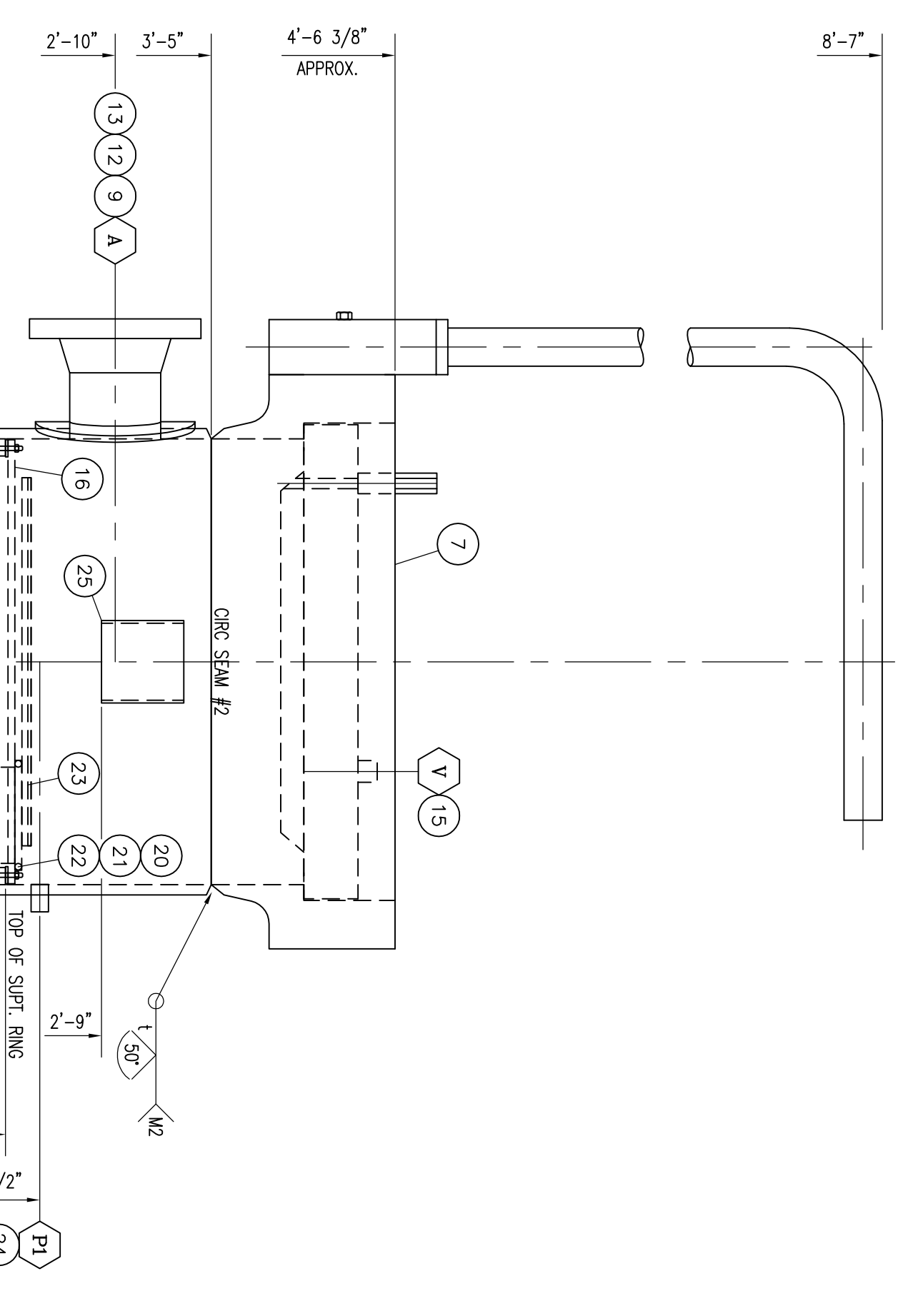
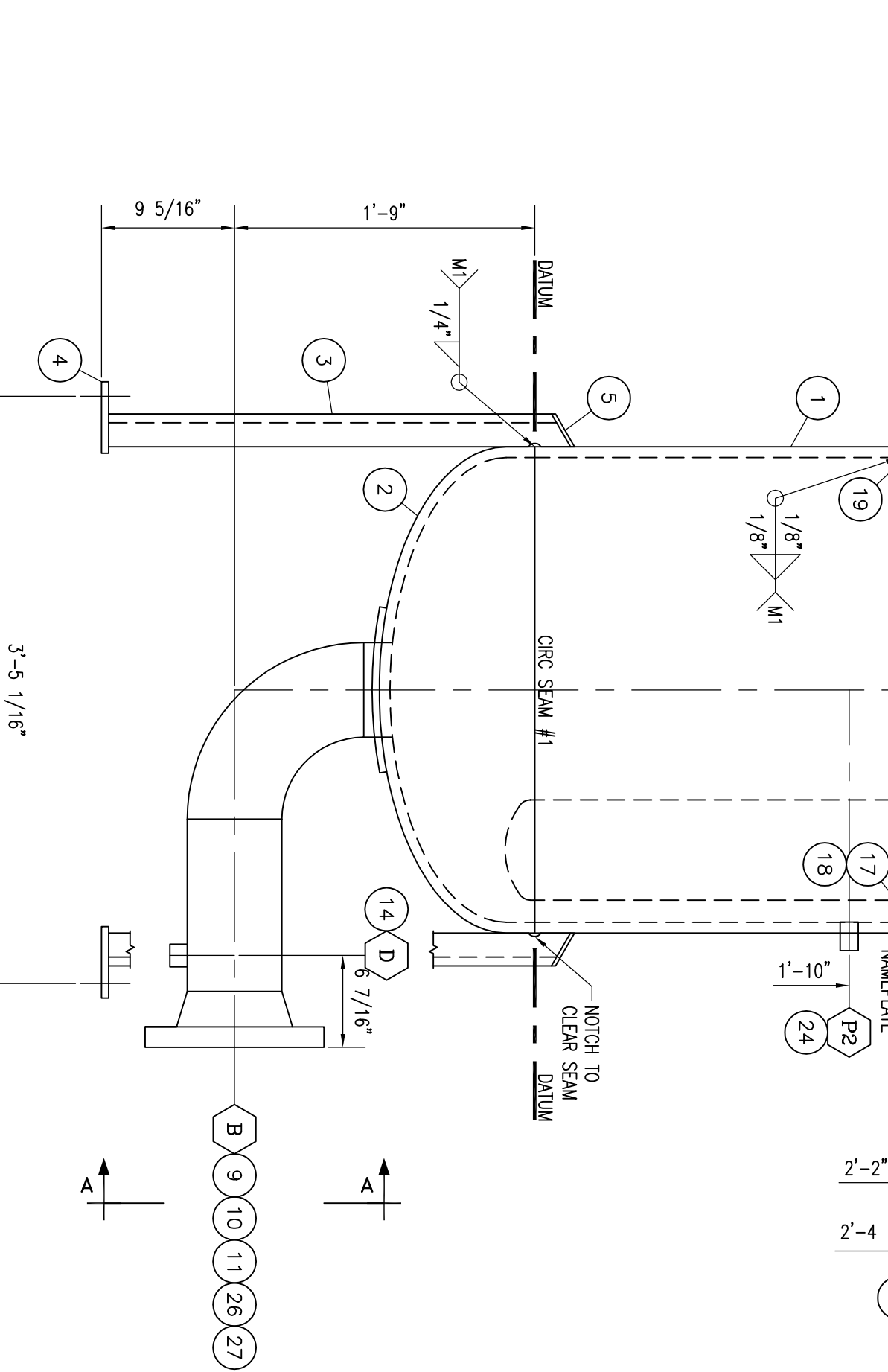


LIST OF MATERIALS

ITEM	QTY	DESCRIPTION	MATERIAL
1	1	SHELL: 34" OD x 3/4" THK PLATE x 3'-5" LG.	SA-516-70N
2	1	HEAD: 34" OD x 3/4" NOM. THK. (0.8875 MIN) 2:1 SE	SA-516-70N
3	4	LEG: 3/8" ANGLE x 3" x 3" x 2'-8 1/4" LG.	G-44W
4	4	BASE PLATE: 1/2" PLATE x 5" x 5" LG.	G-44W
5	4	LEG COVER: 1/4" PLATE, CUT TO SUIT	G-44W
6	1	QUICK OPENING CLOSURE: 34" - 300# SENTRY 32 1/2" BORE	SA-516-70N
7	1	CRN: 0H6135;2	SA-105N
8	2	6"-300# RFWN FLANGE: SCH. XH	SA-234-WPB
9	1	6" 90° LR. BW ELBOW, SCH. XH	SA-106B
10	1	6" PIPE SMS. SCH. XH x 11 1/4" LG.	SA-106B
11	1	6" PIPE SMS. SCH. XH x 5 1/4" LG.	SA-106B
12	1	REPAD: 1/2" PLATE x 11 5/8" OD x 6 13/16" ID, ROLLED	SA-516-70N
13	1	1"-3000# CRIG. SS	SA-182-F316
14	1	1"-3000# CRIG. S.S.	SA-182-F316
15	1	TUBESHEET: 1/2" THK. - SEE DWG. D3398-1	SA-182-F316
16	1	GASKET: 3/16" THK. x 31 3/4" OD x 29 3/4" ID	SA-182-F316
17	1	SUPPORT RING: 1/2" THK. - SEE DWG. D3398-1	NEOPENRE
18	1	BOLT: 5/16" x 2" LG. STUDS c/w 2 NUTS EACH	G-44W
19	12	0-RING: #442	SS
20	10	BAG FILTER: 10 MICRON FILTRATION	BUNA
21	10	OAKLAND BASKET: SIZE #2	SS
22	10	HOLD-DOWN RING: SEE DWG. D3398-1	SS
23	2	3/4"-3000# CRIG. SS	SA-182-F316
24	2	MOSS FABRICATION NAMEPLATE & BRACKET	SS-G-44W
25	1	REPAD: 1/2" PLATE x 11 5/8" OD x 6 13/16" ID, DISHED	SA-516-70N
26	1	6" PIPE SMS. SCH. XH x 2 1/8" LG.	SA-106B
27	1		SA-106B



ELEVATION VIEW
(NOT A TRUE ORIENTATION)
SCALE 1:10



SECTION 'A-A'
DETAIL VIEW
SCALE 1:8

- NOTES:
1. WELD PROCEDURE W-425.2 A.O.P. #1214(S)
 2. RADIUS ALL CORNERS INSIDE 1/8"
 3. ALL DIMENSIONS ± 1/8" UNLESS OTHERWISE NOTED
 4. ALL BOLT HOLES TO STRADDLE CENTERLINE
 5. USE TACK WELD PROCEDURE M1
 6. IMPACT TEST NOT REQUIRED PER US-2001(1-5)
 7. EXTERNAL SANDBLAST - SP-6 COMMERCIAL
 8. PRIMER (1) S/C RUSTEX PRIMER
 9. INTERNAL SANDBLAST: SP-5 (WHITE) (WARM GREY)
 - INTERNAL COATING: EC 375, 12-15 MIL DFT

WPS #	WPS #	WPS #
1	2	3
WPS # M2	WPS # M1	WPS # M1

NOZ	REMARKS	SIZE	QTY	RATE	TYPE	BRG	EX. PNL.	INT. PNL.	WELD	WELD SIZE	REGRD
V	VENT	1"	1	3000#	CRIG	NPT	-	-	4	3/8	-
P1/2	DPN	3/4"	2	3000#	CRIG	NPT	-	-	5	3/8	-
D	DRN	1"	1	3000#	CRIG	NPT	-	-	5	3/8	-
B	OUTLET	6"	1	300#	RFWN	XH	-	-	1.3	1/2"	-
A	INLET	6"	1	300#	RFWN	XH	-	-	1.3	1/2"	-

VESSEL OPENING SCHEDULE

NOZ	REMARKS	SIZE	QTY	RATE	TYPE	BRG	EX. PNL.	INT. PNL.	WELD	WELD SIZE	REGRD
V	VENT	1"	1	3000#	CRIG	NPT	-	-	4	3/8	-
P1/2	DPN	3/4"	2	3000#	CRIG	NPT	-	-	5	3/8	-
D	DRN	1"	1	3000#	CRIG	NPT	-	-	5	3/8	-
B	OUTLET	6"	1	300#	RFWN	XH	-	-	1.3	1/2"	-
A	INLET	6"	1	300#	RFWN	XH	-	-	1.3	1/2"	-

CONSTRUCTION: ASME SEC VIII, DIV 1, UW-11(G)(5)(b), 2002 EDITION, 2003 ADDENDA

DESIGN PRESSURE: 720 PSIG 4964 kPaq

DESIGN TEMPERATURE: 130 deg F 54.4 deg C

TEST PRESSURE: 1040 PSIG 7170 kPaq

M.D.M.T.: -20 deg F @ 720 PSIG -29 deg C @ 4964 kPaq

RADIOGRAPHY: RT-2, FULL ON LONG SEAM 4964 kPaq @ 54.4 deg C

M.A.W.P.: 720 PSIG @ 130 deg F 4964 kPaq @ 54.4 deg C

C.A.: 1/16 in. 1.59 mm SERVICE: PRODUCED WATER

STRESS RELIEF: N/R

SHIPPING WEIGHT: 5000 lbs. kg. VOLUME: 20 cu. ft. 0.57 cu. m

SERIAL NUMBER: 3398-12 YEAR BUILT: 2003

NUMBER RECD: TWO (2) C.R.N.: R3736.2

DESIGN DATA

2	REV'D DAWN & V NOZ. AS BUILT	5 FEB 04	DGS
1	ISSUED FOR FABRICATION	17 DEC 03	TMS
0	ISSUED FOR APPROVAL	15 DEC 03	TMS

REVISIONS

NO.	DESCRIPTION	DATE	BY	APP'D	DATE
2	REV'D DAWN & V NOZ. AS BUILT	5 FEB 04	DGS		
1	ISSUED FOR FABRICATION	17 DEC 03	TMS		
0	ISSUED FOR APPROVAL	15 DEC 03	TMS		

TITLE: 34" OD x 3'-5" S/S FILTER

10 BAG

VESSEL AND DETAIL DRAWING

MOSS FABRICATION LTD.
CALGARY ALBERTA
mossfab@mossfabrication.com

CLIENT: CANADIAN NATURAL RESOURCES LTD.
LSD: 05-29-82-19-WAM
DRAWING NO: V3398-1

DATE: 18 x 24
SCALE: 1:8
JOB NO.: 3398
AS SHOWN K.MOSTOWICH
REV: 2