

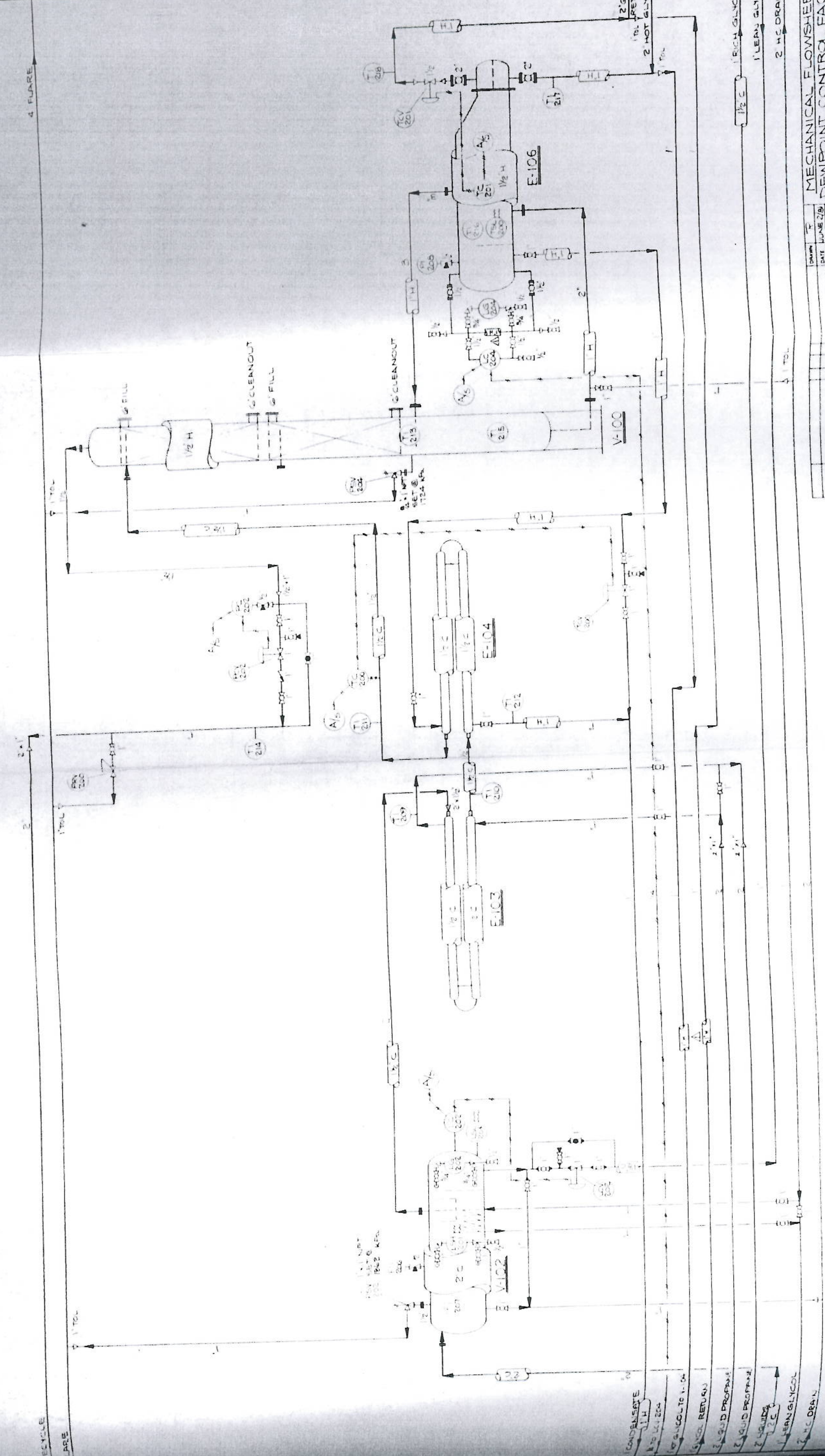
E-106
 DE-ETHANIZER REBOILER
 12/24" 9G TYPE B&U TEMA C
 150 PSIG / 250 PSIG DP @
 400°F / 250°F + 1/4" CA
 701 MBTU/HR DUTY + 50% SPARE

V-100
 DE-ETHANIZER
 24" O.D. x 40' O.S.M.
 250 PSIG D.P. @ 260°F + 1/4" CA
 PACKED COLUMN - 2 15'-0" SECTIONS
 1/2" CERAMIC INTALOX SADDLES

E-104
 CONDENSATE/CONDENSATE HEAT EXCHANGER
 1/2" x 3/4" O.D. x 10'-0" L.S.
 250 PSIG / 250 PSIG @ 250°F + 1/4" CA
 HAIRPIN, FIN TUBE

E-103
 CONDENSATE/PROPANE HEAT EXCHANGER
 1/2" x 3/4" O.D. x 10'-0" L.S.
 250 PSIG / 250 PSIG @ 150°F + 1/4" CA
 HAIRPIN, FIN TUBE

V-102
 GLYCOL/H₂O SEPARATOR
 36" O.D. x 10'-0" S.M.
 270 PSIG D.P. @ 150°F + 1/4" CA
 2-PHASE, HORIZONTAL



DATE	BY	SCALE
JUNE 28		

MECHANICAL FLOWSHEET
 DEWPOINT CONTROL FACILITY
 ANOPCOK GAS PLANT

P-104 A/B

GLYCOL PUMPS

MILROY MODEL N^o MRI-G1-113
 1/2" PLUNGER, ADJUSTABLE STROKE
 1.0 HP, 3/20/430V X-P MOTOR
 113 SPM, 33 GPH MAX

F-103

CHARCOAL FILTER

10 3/4" OD x 6'-6" HIGH
 100 PSIG DP @ 150°F
 BULK CHARCOAL

F-102

GLYCOL FILTER

INVALCO F 1F-101
 INTERNAL RELIEF + BYPASS
 25 MICRON CARTRIDGE

E-108 / V-112

GLYCOL REGENERATOR

100M BTU/HR DUTY
 REBOILER: 20' OD x 3'-0" LG (E-108)
 AT 100S @ 400°F
 TUBE BUNDLE: 8' x 8'-0" LG TEMAC
 150 PSIG @ 400°F
 STILL COLUMN: 2 3/8" OD x 5'-3" LG

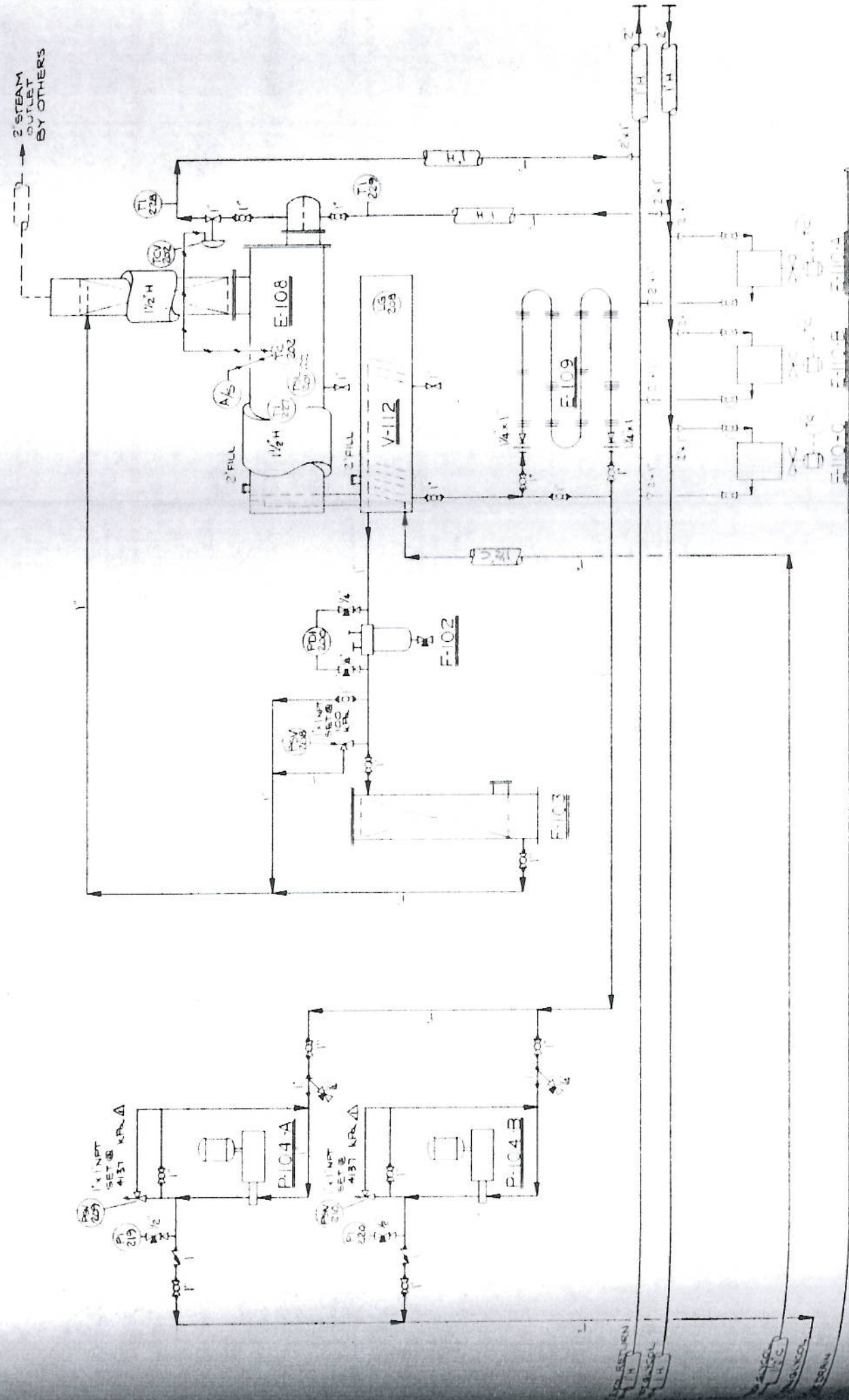
E-109

GLYCOL/AIR HEAT EXCHANGER

1 1/4" OD x 4'-0" LG 4-PASS
 TRAPEZOIDAL FIN TUBE

SKID EDGE

SCALE

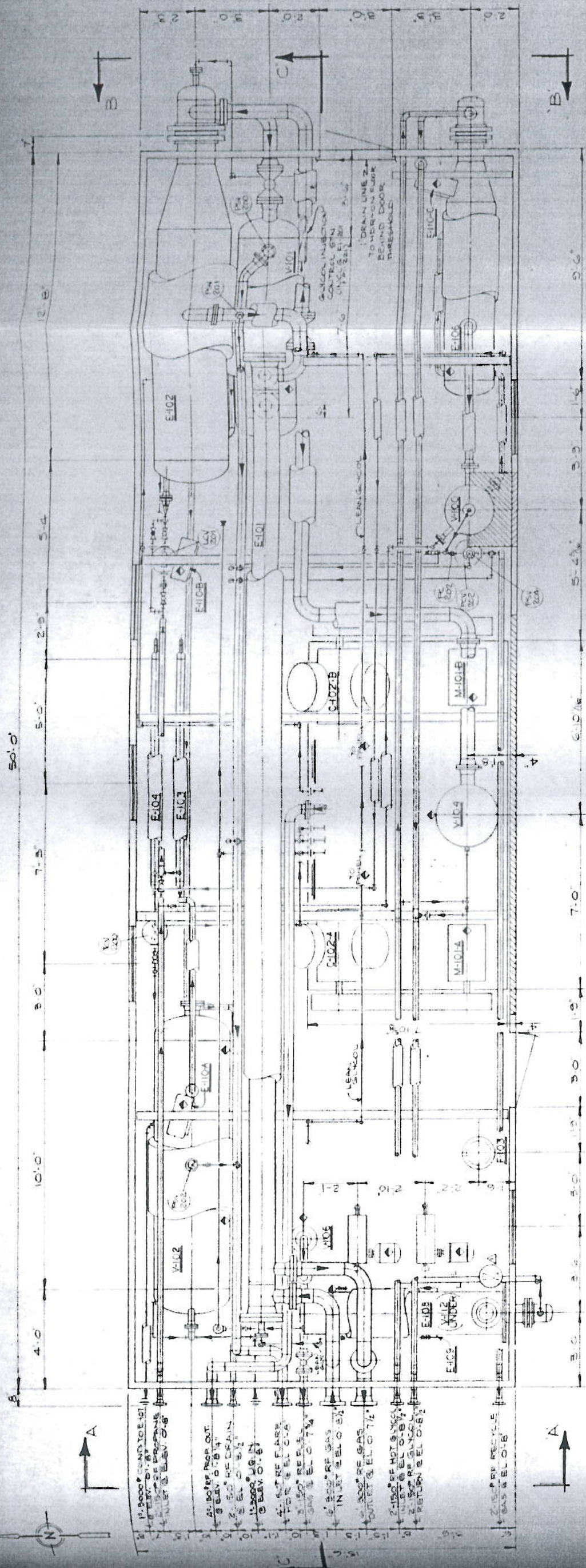


- LEGEND**
- AX INSTRUMENT GAS SUPPLY
 - FE FLOW ELEMENT
 - FR FLOW RECORDER
 - FI FLOW INDICATOR
 - LC LEVEL CONTROLLER
 - LV LEVEL CONTROL VALVE
 - LG LEVEL GAUGE
 - LSL LEVEL SWITCH LOW
 - LSH LEVEL SWITCH HIGH
 - LSLH LEVEL SHUTDOWN-LOW
 - LSHH LEVEL SHUTDOWN-HIGH
 - M FLOW METER
 - PI PRESSURE INDICATOR
 - PC PRESSURE CONTROLLER
 - PR PRESSURE RECORDER
 - PS PRESSURE SAFETY VALVE
 - PSL PRESSURE SWITCH LOW
 - PSH PRESSURE SWITCH HIGH
 - PR PRESSURE RECORDER
 - PI PRESSURE DIFFERENTIAL INDICATOR
 - RO RESTRICTION ORIFICE
 - SV SHUTDOWN VALVE
 - TI TEMPERATURE INDICATOR
 - TR TEMPERATURE RECORDER
 - TC TEMPERATURE CONTROLLER
 - TV TEMPERATURE CONTROL VALVE
 - TW THERMOWELL
 - SL TEMPERATURE SWITCH LOW
 - SH TEMPERATURE SWITCH HIGH
 - PMI PANEL MOUNTED INSTRUMENT
 - 200 BALL VALVE
 - 201 CHECK VALVE
 - 202 CONTROL VALVE
 - 203 GATE VALVE
 - 204 GLOBE VALVE
 - 205 NEEDLE VALVE
 - 206 PLUG VALVE
 - 207 Y TYPE LINE STRAINER
 - 208 FLOW ELEMENT/RESTRICTION ORIFICE

NO.	DESCRIPTION	DATE	BY	REVISION
1	ISSUED FOR CONSTRUCTION	10/1/50	J.M.	1
2	REVISED TO SHOW PUMP MOTOR	10/1/50	J.M.	2
3	REVISED TO SHOW PUMP MOTOR	10/1/50	J.M.	3
4	REVISED TO SHOW PUMP MOTOR	10/1/50	J.M.	4
5	REVISED TO SHOW PUMP MOTOR	10/1/50	J.M.	5
6	REVISED TO SHOW PUMP MOTOR	10/1/50	J.M.	6
7	REVISED TO SHOW PUMP MOTOR	10/1/50	J.M.	7
8	REVISED TO SHOW PUMP MOTOR	10/1/50	J.M.	8
9	REVISED TO SHOW PUMP MOTOR	10/1/50	J.M.	9
10	REVISED TO SHOW PUMP MOTOR	10/1/50	J.M.	10

E-110-B B/C
 BUILDING HEATERS
 TRAPEZOIDAL FIN TUBE
 1 1/4" HP / 180/115V X-FINATOR

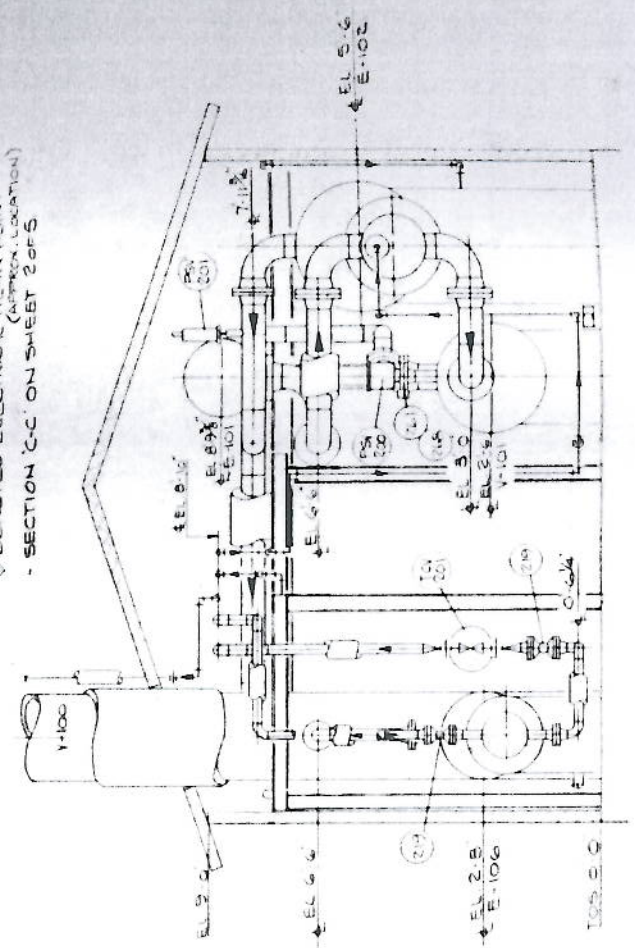
MECHANICAL FLOWSHEET
 DEWPOINT CONTROL FACILITY
 ANOPOLK GAS PLANT



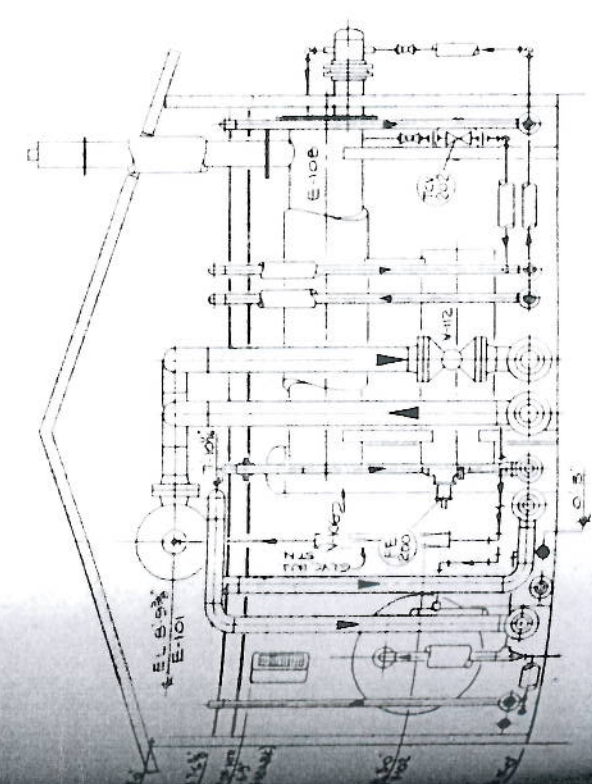
- 1. 3000 GAL. TO E-101
- 2. 1000 GAL. TO E-102
- 3. 1000 GAL. TO E-103
- 4. 1000 GAL. TO E-104
- 5. 1000 GAL. TO E-105
- 6. 1000 GAL. TO E-106
- 7. 1000 GAL. TO E-107
- 8. 1000 GAL. TO E-108
- 9. 1000 GAL. TO E-109
- 10. 1000 GAL. TO E-110
- 11. 1000 GAL. TO E-111
- 12. 1000 GAL. TO E-112
- 13. 1000 GAL. TO E-113
- 14. 1000 GAL. TO E-114
- 15. 1000 GAL. TO E-115
- 16. 1000 GAL. TO E-116
- 17. 1000 GAL. TO E-117
- 18. 1000 GAL. TO E-118
- 19. 1000 GAL. TO E-119
- 20. 1000 GAL. TO E-120

PLAN VIEW

- NOTE: ELEVATIONS SHOWN ARE FROM TOP OF SKID
- BUILDING SUPPLIED BY OTHERS
- ▲ DENOTES ELECTRICAL TIE-IN POINT (APPROX. LOCATION)
- SECTION C-C ON SHEET 2 OF 5



END VIEW B-B



END VIEW A-A

GENERAL NOTES:

- 1 ALL PIPING IS TO BE IN ACCORDANCE WITH THE LATEST EDITION OF B31.3 PIPING CODE
- 2 ALL PIPING 2" & OVER TO BE SCH 40 (STD)
- 3 SA-53-B SMLS PIPE WITH SCH 40 (STD)
- 4 SA-234 WPB BUTT WELD FITTINGS
- 5 ALL PIPING 1/2" UNDER TO BE SCH 80 SMLS
- 6 SA-106-B PIPE WITH 3000° SMLS SCREWED FITTINGS ALL GALVALUMISED
- 7 SCAP TO INSTALL 3/4" NPT 3000° VENTS & DRAINS 4" SA-106 SMLS SOLID HEX PLUG ON ALL WELDED PIPING @ HIGH & LOW POINTS
- 8 ALL TUBING TO BE 1/2" 20GA SMLS SA-79
- 9 WITH CARBON STEEL FITTINGS
- 10 INSTRUMENT GAS HEADERS TO BE TAKEN OFF 2" 50° E.P. GAS SUPPLY & RUN AS SHOWN WITH 1/4" TAKEOFFS TO INSTRUMENTS
- 11 TAKE OFFS TO INCLUDE INSULATION VALVE, STR REGULATOR, 1/4" TUBING TO COMPLETE
- 12 INSTALL 2 1/2" DIA 1/4" NPT PRESSURE GA. (0-30" R) IF NO GAUGE ON INSTRUMENT
- 13 ALL LINES & VESSELS TO BE INSULATED AS PER 50 MFR MECHANICAL FLOW SHEET
- 14 ALL PIPING & SKID EDGE TO BE MAINTAINED AT DIMENSIONS & SLOPES TO BE MAINTAINED CUSTOMER TIE-IN
- 15 ASSEMBLY DETAILS TO BE READ IN CONJUNCTION WITH MECHANICAL FLOW SHEET

16 ALL SCREWED & BACKWELDED PIPING TO BE AIR TESTED @ 100 PSIG WITH SEAMS/JUNCTIONS SCAPED TO DETECT LEAK

17 ALL WELDED PIPING TO BE TESTED & X-RAYED AS SHOWN ON DETAILS AND CONFORM TO B31.3

18 ALL PIPING, SUPPORTS, ETC., TO BE SANDBLASTED TO NEAR WHITE METAL PER SSPC-SP10 AND PAINT ONE (1) COAT (2 MILS) EPOXY ESTER ZINC CHROMATE PRIME (MOBIL 184-602)

19 DISMANTLED INSTRUMENTS SHALL BE SECURELY TAGGED WITH APPROPRIATE TAG NO & PROPERLY CRATED FOR SHIPMENT

20 PROTECT ALL OPENINGS FOR SHIPMENT

21 ESTIMATED ASSEMBLED WT: 179,000 LBS

22 35,834 kg

NO.	DATE	BY	CHKD	APPD	REVISIONS
1	12-11-01	JHM	JHM	JHM	ISSUED FOR CONSTRUCTION
2	12-11-01	JHM	JHM	JHM	FOR INFO
3	12-11-01	JHM	JHM	JHM	FOR INFO
4	12-11-01	JHM	JHM	JHM	FOR INFO
5	12-11-01	JHM	JHM	JHM	FOR INFO
6	12-11-01	JHM	JHM	JHM	FOR INFO
7	12-11-01	JHM	JHM	JHM	FOR INFO
8	12-11-01	JHM	JHM	JHM	FOR INFO
9	12-11-01	JHM	JHM	JHM	FOR INFO
10	12-11-01	JHM	JHM	JHM	FOR INFO
11	12-11-01	JHM	JHM	JHM	FOR INFO
12	12-11-01	JHM	JHM	JHM	FOR INFO
13	12-11-01	JHM	JHM	JHM	FOR INFO
14	12-11-01	JHM	JHM	JHM	FOR INFO
15	12-11-01	JHM	JHM	JHM	FOR INFO
16	12-11-01	JHM	JHM	JHM	FOR INFO
17	12-11-01	JHM	JHM	JHM	FOR INFO
18	12-11-01	JHM	JHM	JHM	FOR INFO
19	12-11-01	JHM	JHM	JHM	FOR INFO
20	12-11-01	JHM	JHM	JHM	FOR INFO

LAYOUT & ASSEMBLY FOR DEWPOINT CONTROL FACILITY

KNOPCIK GAS PLANT

CUSTOMER: TURBO RESOURCES LTD

PROJ: 000018-2624

REVISIONS

SHEET 1 OF 1

DWG: A-537