

**V-470**  
GLYCOL FLASH SEPARATOR  
324mm OD. x 1524mm s/s  
D.P.: 1724 kPa @ -29°C/93°C  
VERTICAL 2 PHASE  
C.A.: 1.6mm

**V-440**  
PROPANE SUCTION SCRUBBER  
762mm OD. x 1524mm s/s  
D.P.: 1860 kPa @ -29°C/66°C  
C.A.: 1.6mm

**C-480**  
REFRIGERATION COMPRESSOR  
MAKE/MODEL: MYCOM P8WB

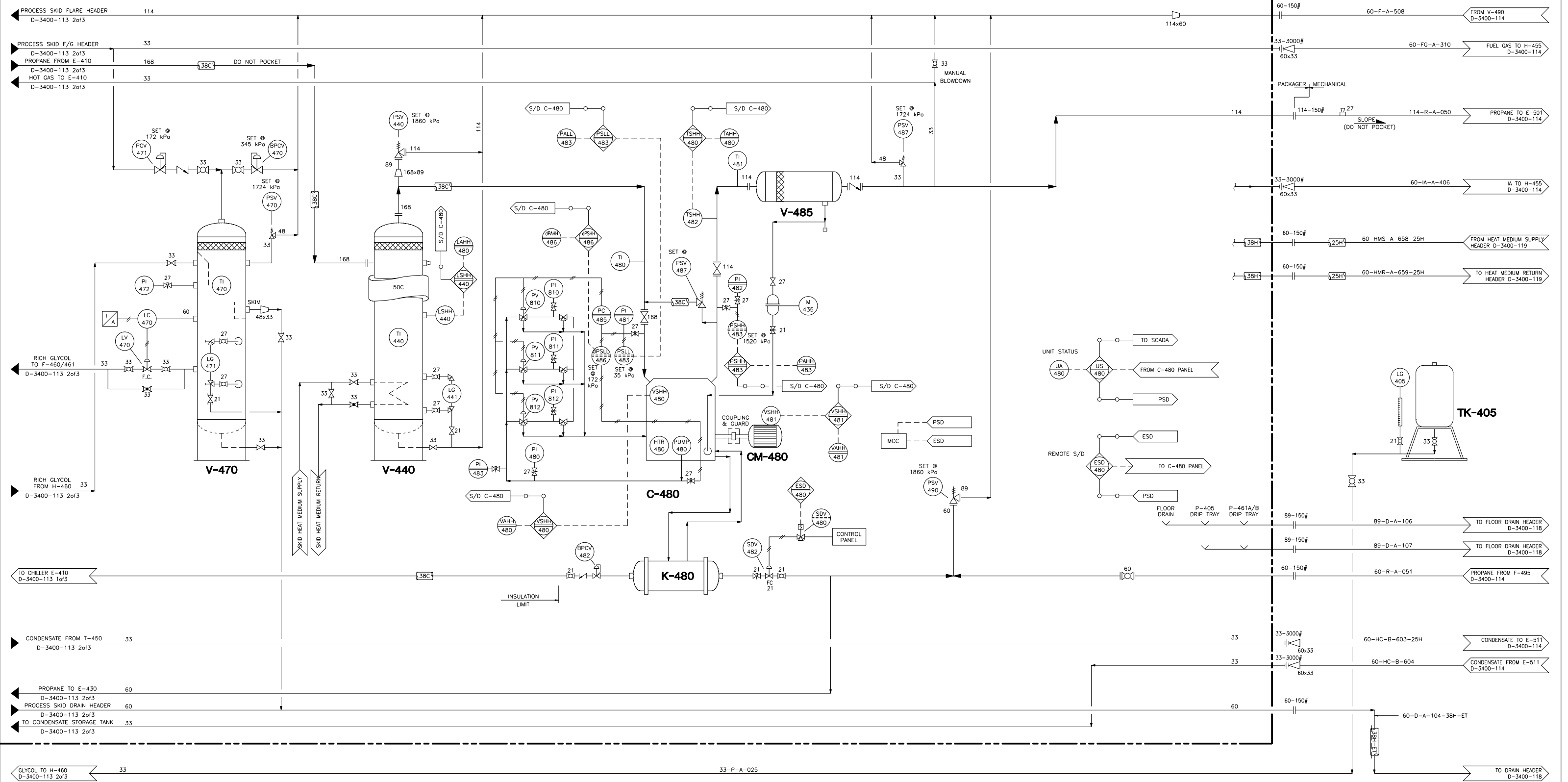
**CM-480**  
REFRIGERATION COMPRESSOR MOTOR  
WEG 150 hp ELECTRIC MOTOR  
1200 RPM 460V/3ø/60hz

**V-485**  
OIL SEPARATOR  
356mm OD. x 660mm s/s  
D.P.: 1860 kPa @ -29°C/71°C  
C.A.: 1.6mm

**K-480**  
OIL COOLER

**TK-405**  
EG MAKE-UP TANK  
1270mm OD x 3658mm LG  
4625 LITRE c/w 3000 HIGH STAND

**PROCESS SKID BOUNDARY**



DWG. NO.	REFERENCE DRAWINGS	REV	REVISIONS	DATE	BY	CHK'D	APP'D	AXL APP'D	ENGINEER AND PERMIT STAMPS			DESIGNED	DRAWN	CHECKED	PROCESS CK.	MECH. CK.	STRUCT. CK.	ELECT. CK.	AXL APP.	AXL APP.	JOB NO.	SCALE	DWG. NO.	1
		1	AS BUILT	94-12-12	TL								ALDRAFT								3400	N.T.S.	D-3400-113-3	
		0	ISSUED FOR CONSTRUCTION	94-09-21	CAE		KOR	RLK																
		D	ISSUED FOR TENDER	94-09-01	AC																			
		C	APPROVED	94-07-22	CAE																			
		B	ISSUED FOR CLIENT APPROVAL	94-07-06	MFM	MI																		
		A	ISSUED FOR APPROVAL	94-03-24	VLW																			



PLOTTED: DEC 14, 1994 10:40 AM FILE No. C:\AEXP-266\266-1133.DWG

AXL ANDERSON EXPLORATION LTD.  
CALGARY, ALBERTA, CANADA

PROJECT  
SADDLE HILLS GAS PLANT

PIPING & INSTRUMENTATION DIAGRAM  
DEWPOINT CONTROL UNIT (Sheet 3 of 3)  
S.E. 1/4-3-77-7 W6M

JOB NO. 3400 SCALE N.T.S. DWG. NO. D-3400-113-3