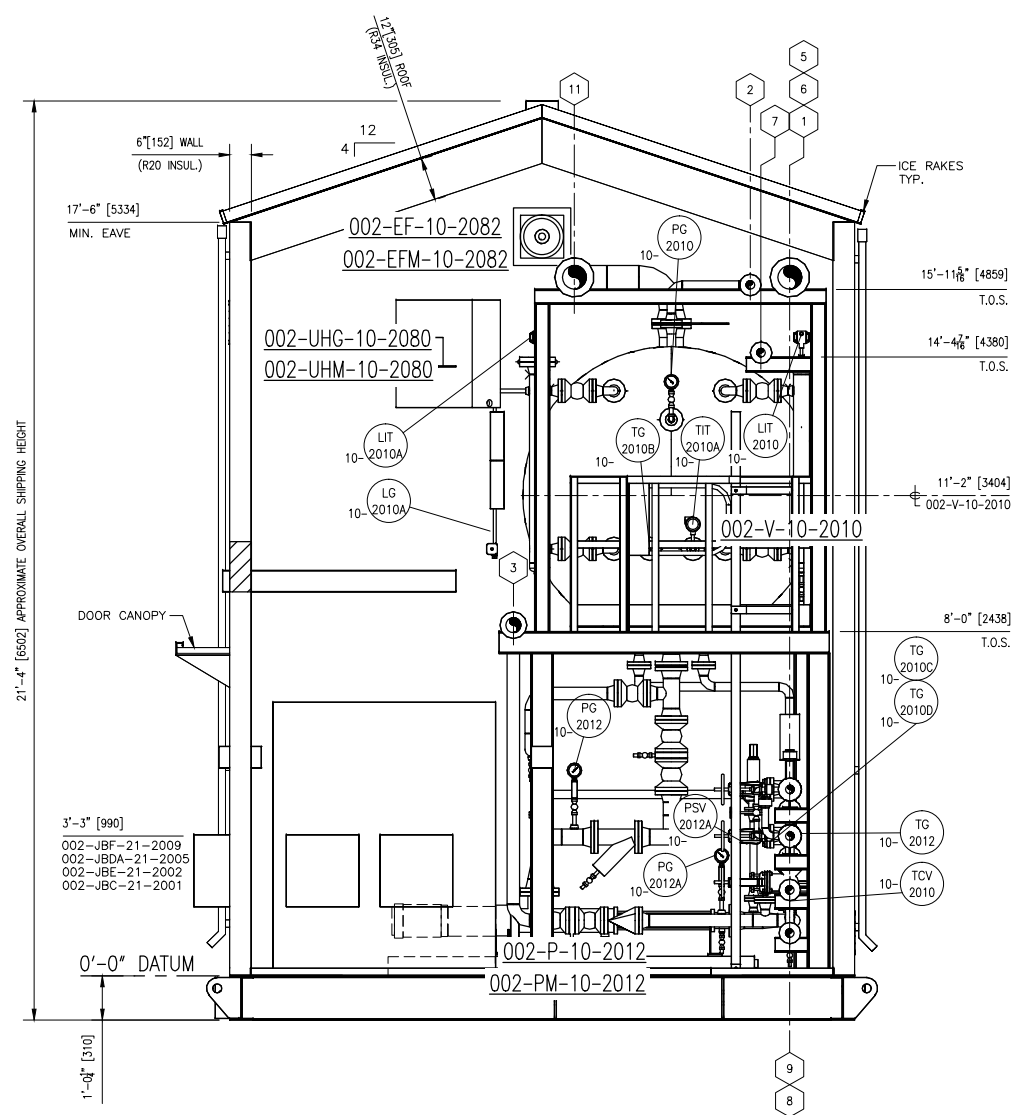


SECTION A-A
SCALE: 1/2"=1'-0"



VIEW B-B
SCALE: 1/2"=1'-0"

GENERAL NOTES:

1. SEE DRAW D-2013-8440-51A-001 FOR GENERAL NOTES.

PIPING SPEC. SCHEDULE:

1. SEE DRAW D-2013-8440-51A-001 FOR PIPING SPEC. SCHEDULE.

TIE-IN SCHEDULE:

1. SEE DRAW D-2013-8440-51A-001 FOR TIE-IN SCHEDULE.

ONE (1) UNIT REQ'D

DWG.	DESCRIPTION	REV.	DATE	BY	CHK'D	DESCRIPTION
D-2013-8440-51F-001	MECHANICAL FLOWSHEET	A	2013 07-18	DD/KW		ISSUED FOR CUSTOMER APPROVAL
		B	2013 07-24	VIK		ISSUED FOR CUSTOMER APPROVAL
		C	2013 08-23	ZR		ISSUED FOR CUSTOMER APPROVAL
		D	2013 09-10	DD		RE-ISSUED FOR CUSTOMER APPROVAL
		O	2013 10-15	DD		ISSUED FOR CONSTRUCTION
		1	2013 11-26	HZ		REVISED TAG NUMBERS

DRAWN	ZR		<small>The information contained herein is the confidential property of Alco Gas and Oil Production Equipment Ltd., and is not for publication. The information is issued on the understanding that no part thereof shall be copied or communicated to a third party without authorization in writing from Alco Gas and Oil Production Equipment Ltd.</small>
DATE	2013-06-17		
SCALE	NTS	SECTION VIEWS LEP CLOSED HYDROCARBON DRAIN PACKAGE TAG: 002-PK-10-2000	
CHK'D			
LOCATION: FERRIER CPF PROJECT, AB		L.S.D.: 11-02-039-08 W5M	
CUSTOMER: DEVON CANADA CORPORATION			
DWG./SHOP ORDER: D-2013-8440-51A-003/003		REV. 1	