

002-K-02-1012
COMPRESSOR FRAME

MFG: ARIEL
MODEL: KBZ/6
RATED POWER: 7800 HP @ 1000 RPM
STROKE: 6.75 in.
ROD LOAD, TOTAL: 150,000 lbs.
ROD LOAD, COMPRESSION: 80,000 lbs.
ROD LOAD, TENSION: 75,000 lbs.
S/N: F34749

002-KM-02-1013
ENGINE DRIVER

MFG: CATERPILLAR
MODEL: G3616TALE
BORE: 11.8 IN.
STROKE: 11.8 IN.
DISPLACEMENT: 20,698 IN CU.
COMP RATIO: 9:1
POWER: 4735 BHP @ 1000 RPM
S/N: BLB00661

002-CFM-02-1046/1047
IC1/AC1/AC2 COOLER FAN MOTORS

POWER: 50 HP @ 1200 RPM
575 V, 3 PH, 60 Hz
TEFC, VFD COMPATIBLE

002-CF-02-1046/1047
IC1/AC1/AC2 COOLER FANS

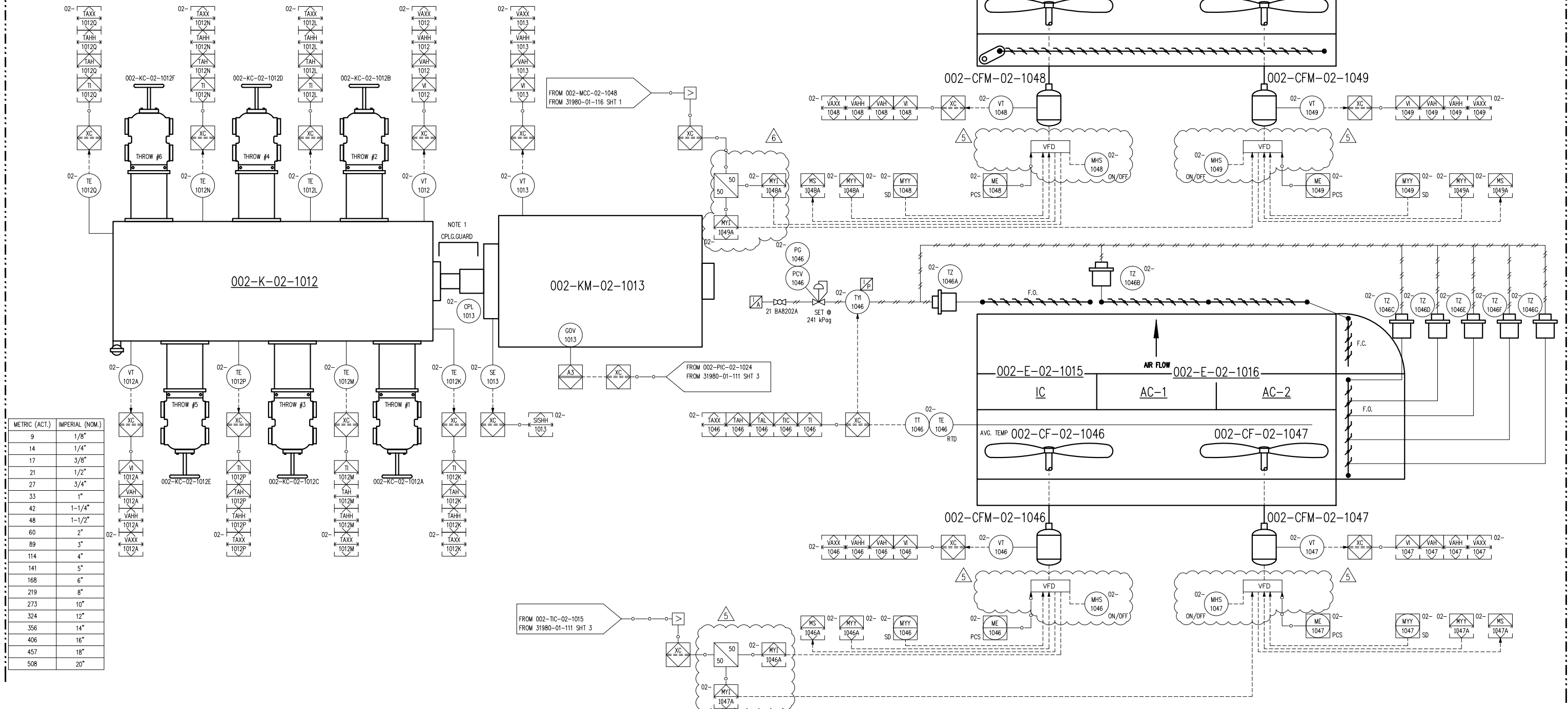
MFG: AIR-X-CHANGERS
MODEL: 168-2Z
TYPE: FORCED DRAFT
REQ'D AIR FLOW: 312,000 SCFM
FAN TYPE: 2 MOORE 168 DIA X 8 BLADES
FAN POWER: 27.64 HP @ 172 RPM
FAN BLADE PITCH: 16.7 DEGREES
AMBIENT AIR: 95°F

002-CFM-02-1048/1049
EJW/AJW FAN MOTORS

POWER: 25 HP @ 1800 RPM
575 V, 3 PH/60 Hz
TEFC, VFD COMPATIBLE

002-CF-02-1048/1049
EWJ/AJW COOLER FANS

MFG: AIR-X-CHANGERS
MODEL: 120-2Z
TYPE: FORCED DRAFT
REQ'D AIR FLOW: 196, 936 SCFM
FAN TYPE: 2 MOORE 120 DIA X 6 BLADES
FAN POWER: 17.35 HP @ 239 RPM
FAN BLADE PITCH: 17.6 DEGREES
AMBIENT AIR: 95°F



NOTES:
1. COUPLING GUARD SHALL BE 2 PIECES.

FINAL AS BUILT
NAME: T. WELSH DATE: JUN 02/14

	6	CONTROL TAGGING CHANGE	JUN 02/14	TW	LD	DATE	JAN 25/13	SCALE	NTS	DEVON CANADA PROJECT NAME: FERRIER CPF AREA: FERRIER LSD: 11-02-039-08-W5M WBS: 01-00348.01 CAT G3616/ARIEL KBZ 6/2	ENERFLEX Calgary, Alberta, Canada	P & I DIAGRAM DRIVE TRAIN/ CONTROL PANEL					
	5	FINAL AS BUILT	MAR 06/14	TW	LD	DRAWN BY	G.PAHL	CHECKED BY	L.DIOQUINO				APPROVED BY	A.DURHAM			
	4	FINAL AS BUILT	OCT 04/13	AR	LD	PROJECT MANAGER	B.MINSHULL	PROJECT ENGINEER	L.DIOQUINO								
	3	REVISED CONTROL PHILOSOPHY	JUL 26/13	AT	LD	CUST PO	Q1120562										
	2	ISSUED FOR CONSTRUCTION	JUN 19/13	CS	LD												
	1	ISSUED FOR CONSTRUCTION	APR 26/13	AT	LD												
	REV	DESCRIPTION	DATE	BY	APR	APEGA PERMIT No:	P8651	OPER. CODE	490 511 591	WORK ORDER	31980-01	DWG NO	31980-01-112	SHT	1	REV	6