

PLOT 22 Apr. 2014-1:00pm. twelsh THE INFORMATION CONTAINED HEREIN IS THE CONFIDENTIAL PROPERTY OF ENERFLEX, LTD. AND IS NOT FOR PUBLICATION, AND NO PART THEREOF SHALL BE COPIED OR COMMUNICATED TO A THIRD PARTY WITHOUT AUTHORIZATION FROM ENERFLEX, LTD.

002-V-02-1018  
STAGE #2 SUCTION SCRUBBER

MFG: ENERFLEX LTD.  
SIZE: 914mm (36") OD X 2642mm (104") S/S  
MAWP: 4504 KPAG @ 149°C (653 PSIG @ 300°F)  
MDMT: -29°C @ 4504 KPAG (-20°F @ 653 PSIG)  
CA: 1.6mm(1/16")  
MATERIAL: CARBON STEEL  
ELEMENTS: VANE PACK/MESH ASSEMBLY  
S/N: 31980014213  
CRN: W1337.2

002-V-02-1019  
STAGE #2 SUCTION BOTTLE

MFG: ENERFLEX LTD.  
SIZE: 660mm (26") OD X 3353mm (132") S/S  
MAWP: 4513 KPAG @ 149°C (655 PSIG @ 300°F)  
MDMT: -29°C @ 4513 KPAG (-20°F @ 655 PSIG)  
CA: 1.6mm(1/16")  
MATERIAL: CARBON STEEL  
S/N: 31980014224  
CRN: W1338.2

002-V-02-1020  
STAGE #2 DISCHARGE BOTTLE

MFG: ENERFLEX LTD.  
SIZE: 610mm (24") OD X 4597mm (181") S/S  
MAWP: 4439 KPAG @ 177°C (645 PSIG @ 350°F)  
MDMT: -29°C @ 4439 KPAG (-20°F @ 645 PSIG)  
CA: 1.6mm(1/16")  
MATERIAL: CARBON STEEL  
S/N: 31980014226  
CRN: W1339.2

KC-1012-6  
COMPRESSOR CYLINDER

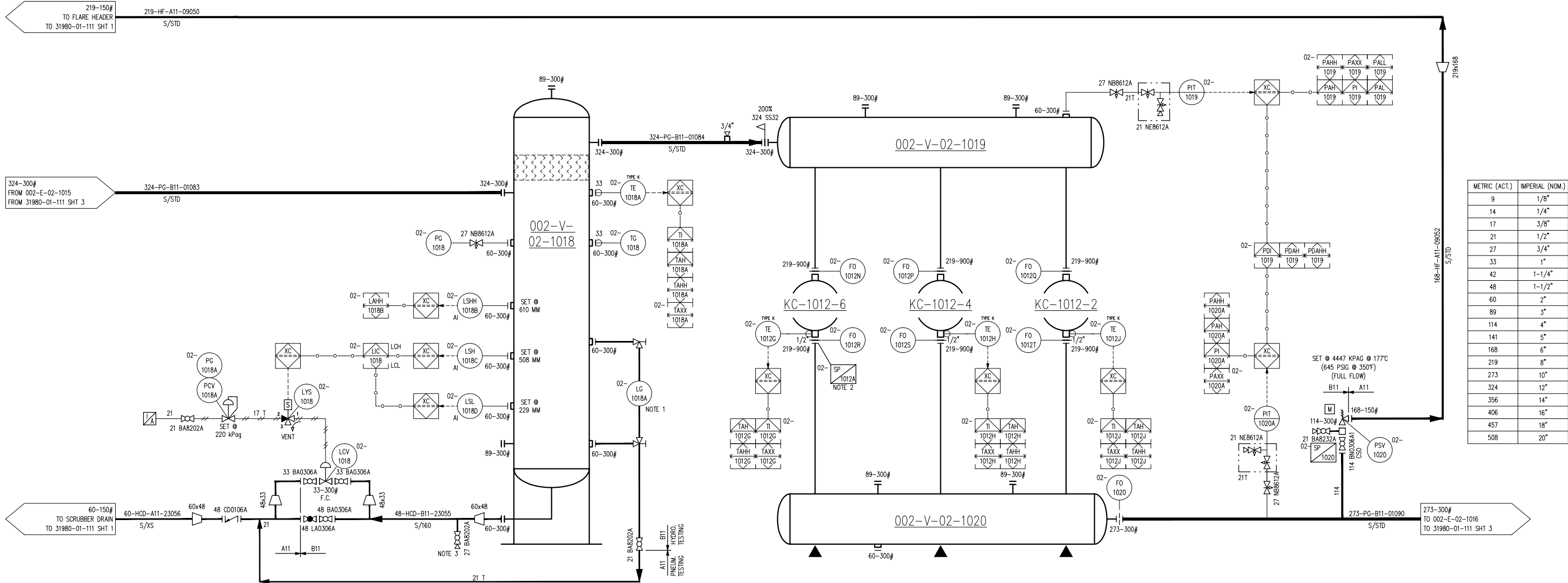
MFG: ARIEL  
MODEL: 12-1/2 Z10  
SIZE: 318mm (12.5") BORE  
MAWP: 11721 KPAG (1700 PSIG)  
THROW: #6  
SN: C119503

KC-1012-4  
COMPRESSOR CYLINDER

MFG: ARIEL  
MODEL: 12-1/2 Z10  
SIZE: 318mm (12.5") BORE  
MAWP: 11721 KPAG (1700 PSIG)  
THROW: #4  
SN: C119501

KC-1012-2  
COMPRESSOR CYLINDER

MFG: ARIEL  
MODEL: 12-1/2 Z10  
SIZE: 318mm (12.5") BORE  
MAWP: 11721 KPAG (1700 PSIG)  
THROW: #2  
SN: C119499



NOTES:

1. SIGHT GLASS & GAUGES TO HAVE 45 DEGREE FITTINGS.
2. SP-1012A IS TYPICAL FOR ALL CYLINDER FLANGES.
3. LIQUID SAMPLING. DOWNWARD/SIDEWARD POSITION.

FINAL  
AS BUILT

NAME: T.WELSH DATE: APR 22/14

4	FINAL AS BUILT	APR 22/14	TW	LD
3	FINAL AS BUILT	OCT 04/13	AR	LD
2	ISSUED FOR CONSTRUCTION	JUN 19/13	CS	LD
1	ISSUED FOR CONSTRUCTION	APR 26/13	AT	LD
0	ISSUED FOR CONSTRUCTION, LESS CONTROL PHILOSOPHY	APR 18/13	AT	LD
C	ISSUED FOR APPROVAL	MAR 21/13	AT	LD
REV	DESCRIPTION	DATE	BY	APR

DATE	JAN 25/13	SCALE	NTS
DRAWN BY	G.PAHL	CHECKED BY	L.DIOQUINO
PROJECT MANAGER	B.MINSHULL	PROJECT ENGINEER	L.DIOQUINO
CUST PO	410000990		
APEGGA PERMIT No:	P8651	OPER. CODE	490 511 591

DEVON CANADA  
PROJECT NAME: FERRIER CPF  
AREA: FERRIER  
LSD: 11-02-039-08-W5M  
WBS: 01-00348.01  
CAT G3616/ARIEL KBZ 6/2

**ENERFLEX**  
Calgary, Alberta,  
Canada

P & I DIAGRAM  
PROCESS GAS  
STAGE #2

DWG NO 31980-01-111

SHT 2

REV 4