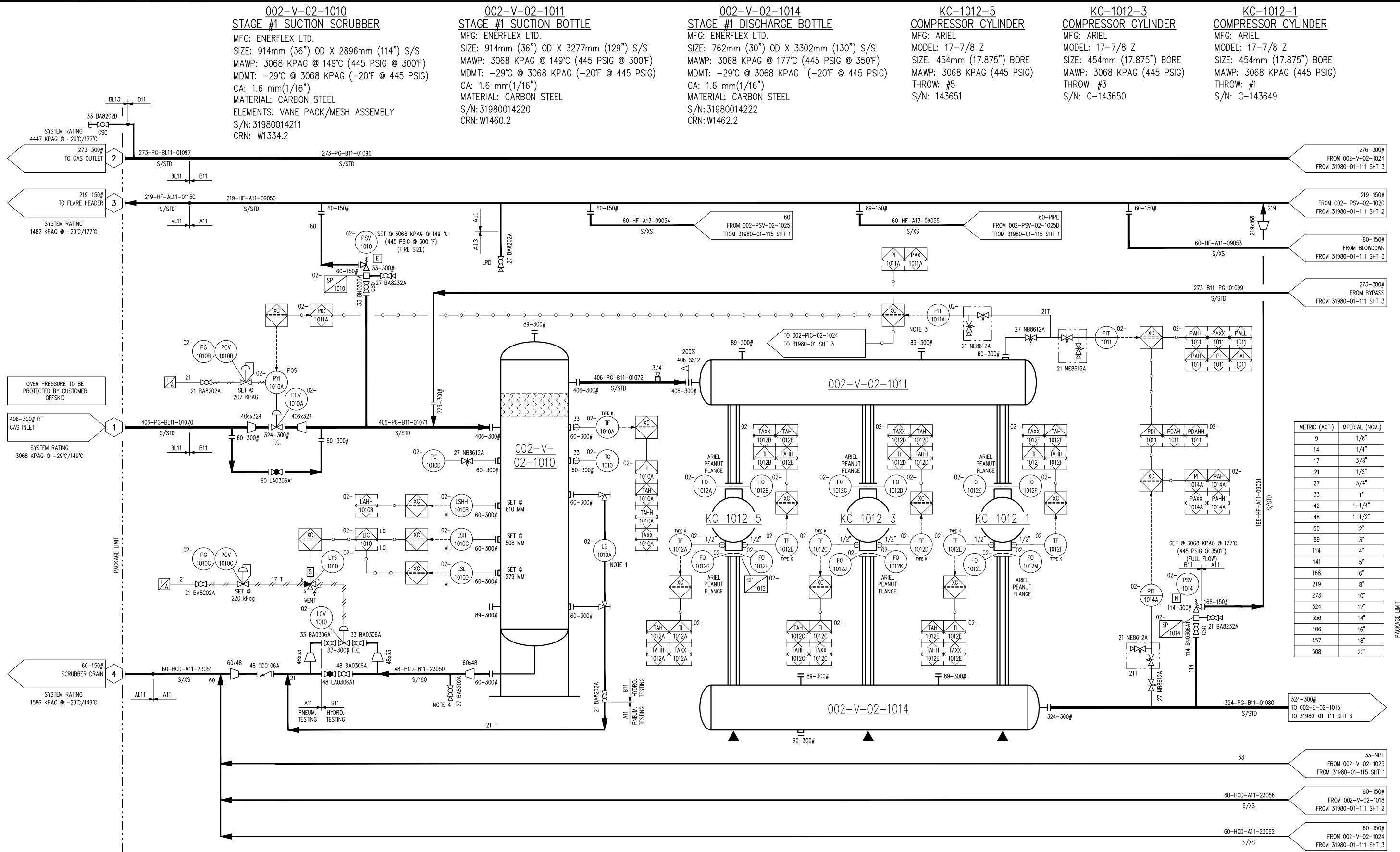


EX-101-04 Oct, 2013-1:43pm, **romero** THE INFORMATION CONTAINED HEREIN IS THE CONFIDENTIAL PROPERTY OF ENERFLEX, LTD. AND IS NOT FOR PUBLICATION, AND NO PART THEREOF SHALL BE COPIED OR COMMUNICATED TO A THIRD PARTY WITHOUT AUTHORIZATION FROM ENERFLEX, LTD.



**FINAL  
AS BUILT**  
NAME A.ROMERO DATE OCT 04/13

- NOTES:**
1. SIGHT GLASS & GAUGES TO HAVE 45 DEGREE FITTINGS.
  2. SP-1012 IS TYPICAL TO ALL FLANGES.
  3. CONTROL TRANSMITTER ONLY.
  4. LIQUID SAMPLING. DOWNWARD/SIDEWARD POSITION.

|     |   |  |           |    |     |                  |            |                  |             |   |  |  |              |     |             |          |   |
|-----|---|--|-----------|----|-----|------------------|------------|------------------|-------------|---|--|--|--------------|-----|-------------|----------|---|
|     | 2 | ISSUED FOR CONSTRUCTION                          | JUN 19/13 | CS | LD  | DATE             | JAN 25/13  | SCALE            | NTS         | DEVON CANADA<br>PROJECT NAME: FERRIER CPF<br>AREA: FERRIER<br>LSD: 11-02-0339-08-W5M<br>WBS: 01-00348.01<br>CAT G3616/ARIEL KBZ 6/2 | <b>ENERFLEX</b><br>Calgary, Alberta,<br>Canada | P & I DIAGRAM<br>PROCESS GAS<br>STAGE #1 |              |     |             |          |   |
|     | 1 | ISSUED FOR CONSTRUCTION                          | APR 26/13 | AT | LD  | DRAWN BY         | G.PAHL     | CHECKED BY       | L.DIOQUINO  |   |  |  |              |     | APPROVED BY | A.DURHAM |   |
|     | 0 | ISSUED FOR CONSTRUCTION, LESS CONTROL PHILOSOPHY | APR 18/13 | AT | LD  | PROJECT MANAGER  | B.MINSHULL | PROJECT ENGINEER | L.DIOQUINO  |   |  |  |              |     |             |          |   |
|     | C | ISSUED FOR APPROVAL                              | MAR 21/13 | AT | LD  |                  |            |                  |             |   |  |  |              |     |             |          |   |
|     | B | ISSUED FOR APPROVAL                              | MAR 5/13  | GP | LD  |                  |            |                  |             |   |  |  |              |     |             |          |   |
|     | 3 | AS BUILT   | OCT 04/13 | AR | LD  | CUST PO          | 410000990  |                  |             |   |  |  |              |     |             |          |   |
| REV |   | DESCRIPTION                                      | DATE      | BY | APR | APEGA PERMIT No: | P8651      | OPER. ORDER      | 490 511 591 | WORK ORDER  | 31980-01                                       | DWG NO                                   | 31980-01-111 | SHT | 1           | REV      | 3 |