

**002-P-27-1011**  
**HYDRATE INHIBITOR PUMP**  
 TEXSTEAM TXT 2500 DUPLEX  
 MODEL: 25F3-2  
 PLUNGER: 2 x 3/8" DIA  
 RATE: 14.76 TO 148.39L/DAY  
 DISCHARGE PRESSURE: 1700 PSI MAX.

**002-PM-27-1011**  
**HYDRATE INHIBITOR PUMP MOTOR**  
 MOTOR: BALDOR  
 DUTY: 1/2 HP  
 POWER: 575V/3/60  
 TYPE: XP C-FLG VFD RATED

**002-P-27-1017**  
**SCALE INHIBITOR PUMP**  
 TEXSTEAM TXT 2500 SIMPLEX  
 MODEL: 25G4-1  
 PLUNGER: 1 x 3/16" DIA  
 RATE: 1.89 TO 18.55L/DAY  
 DISCHARGE PREASURE: 6000 PSI MAX.

**002-PM-27-1017**  
**SCALE INHIBITOR PUMP MOTOR**  
 MOTOR: BALDOR  
 DUTY: 1/2HP  
 POWER: 3/60/575V  
 TYPE: XP C-FLG VFD RATED

**002-UHG-27-1091**  
**BUILDING HEATER**

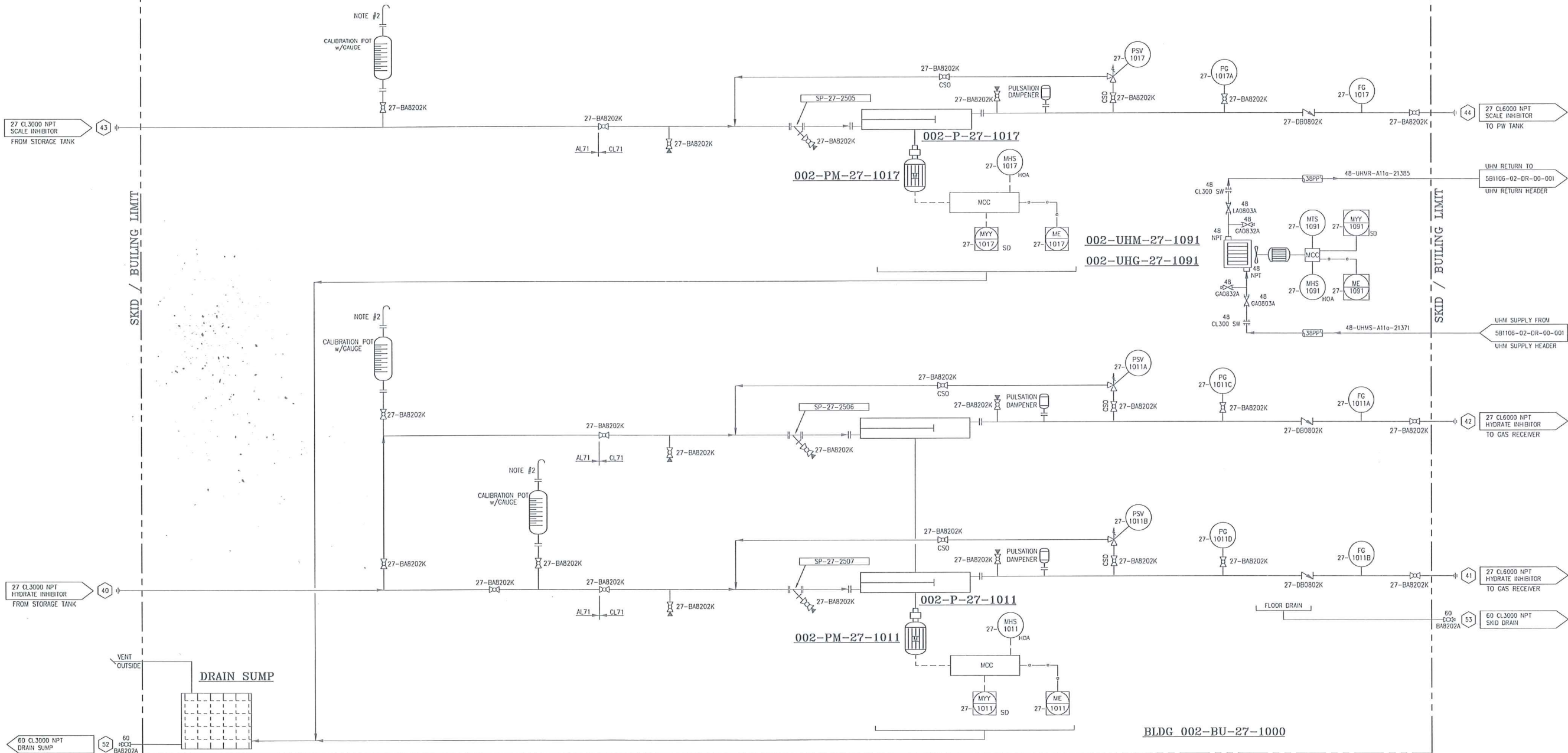
MAKE: RUFFNECK  
 MODEL: AH-24A-A7A1-A1-2H

**002-UHM-27-1091**  
**BUILDING HEATER MOTOR**

MAKE: RUFFNECK  
 MODEL: T3B MOTOR - 50B FAN  
 CLASS 101V1&11 GROUP C&D  
 POWER: 575 / 3PH / 60Hz  
 DUTY: 0.5HP

FOR BUILDING CONTINUATION  
 SEE DWG 5B1109-02-DR-00-001

FOR BUILDING CONTINUATION  
 SEE DWG 5B1109-02-DR-00-001



**NOTES:**

- SEE DRAWING # 5B1109-02-DR-00-001 FOR PARAFFIN ASPHALTENE SOLVENT PUMPS.
- CALIBRATION POT TOP NOZZLE FLANGE TO BE AT SAME ELEVATION AS THE VENT NOZZLE OF THE CORRESPONDING STORAGE TANK.
- ALL INSTRUMENT TAGS SHALL READ AS FULL TAG NUMBER. EXAMPLE: 002-PSV-27-1017A

NO.	REVISION	BY	CHK	DATE
2	AS BUILT	TBA		08/05/14
1	GENERAL REVISION	BS		06/01/14
0	ISSUED FOR CONSTRUCTION	SF		30/09/13
A	ISSUED FOR APPROVAL	DFD		18/08/13

CUSTOMER REFERENCE	FE-CPF-M022	CUSTOMER:	DEVON NEC CORPORATION	JOB NO.	5B1109-02
		PROJECT:	FERRIER CENTRAL OIL BATTERY - LIQUID EXTRACTION PLAT (LEP) LOCATION: LSD 11-02-039-08 W5M		
		TITLE:	CHEMICAL INJECTION PUMP PACKAGE (002-27-PK-1000) P&ID		
DRAWN	CHK	APP	SCALE	DATE	DWG NO
DFD			NTS	09/07/13	5B1109-02-DR-00-002
			SHT	TTL	002

JUN 04 2014