

002-EF-27-1092
EXHAUST FAN
MAKE: RUFFNECK
MODEL: 9ACPH: EFX-16A-2HXP

002-EFM-27-1092
EXHAUST FAN MOTOR
MAKE: RUFFNECK
MODEL: 9ACPH 575/3/60 - 1/2HP - 1825CFM - T38 MOTOR

002-L-27-1094
ACTUATED LOUVRE
SIZE: 28" x 28"
PBX-4L6 PARALLEL BLADE DAMPER
c/w BELIMO Z5260 EXPLOSION PROOF ENCLOSURE

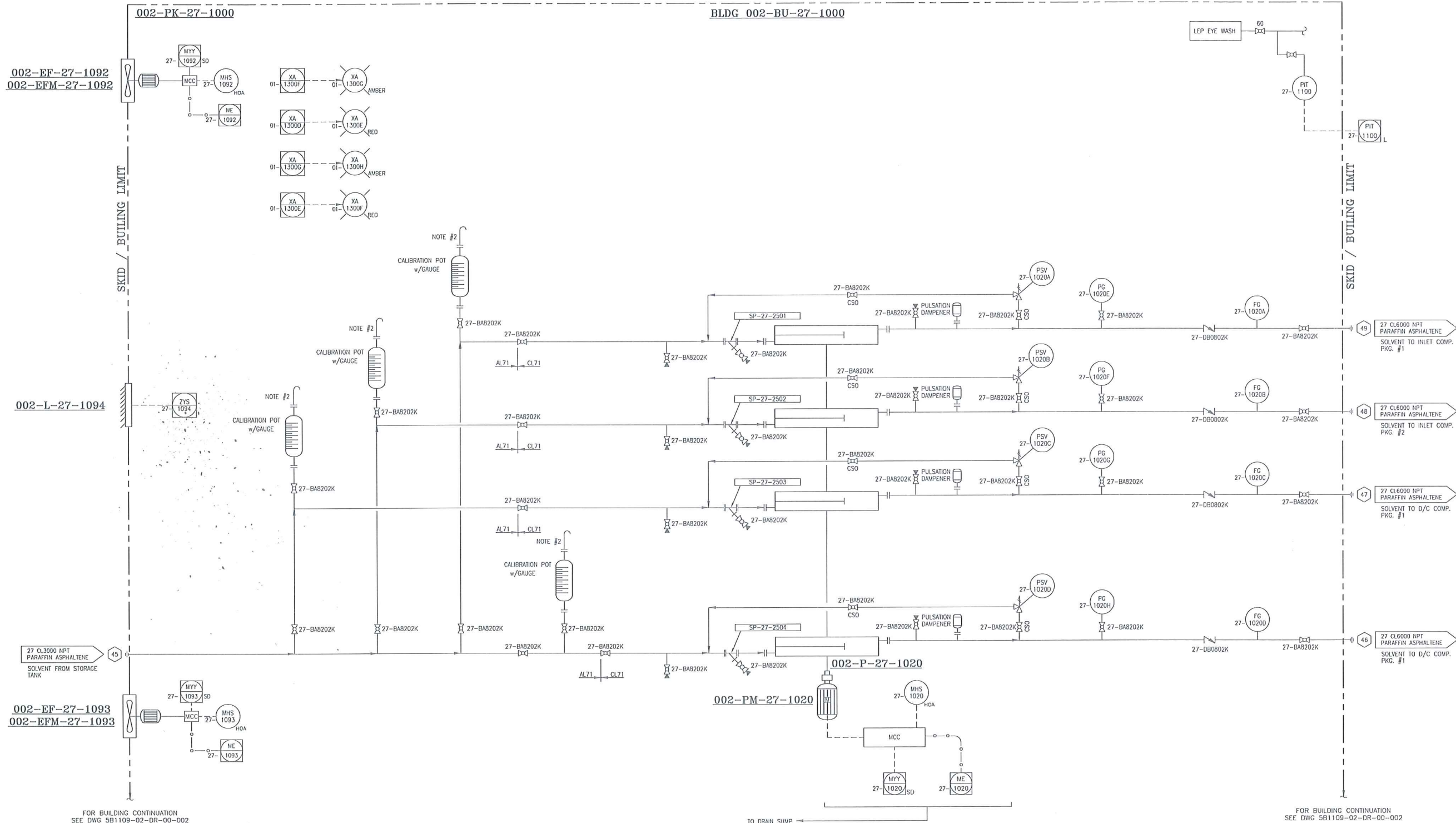
002-EF-27-1093
EXHAUST FAN
MAKE: RUFFNECK
MODEL: 9ACPH EFX 12A-2HXP

002-EFM-27-1093
EXHAUST FAN MOTOR
MAKE: RUFFNECK
MODEL: 9ACPH 575/3/60 - 1/2HP - 850CFM - T38 MOTOR

002-P-27-1020
PARAFFIN ASPHALTENE SOLVENT PUMP
TEXTSTEAM TXT 2500 QUADPLEX
MODEL: 29FS-4
PLUNGER: 4 x 1/2" DIA
RATE: 26.5 TO 263.84L/DAX
DISCHARGE PRESSURE: 1000 PSI MAX

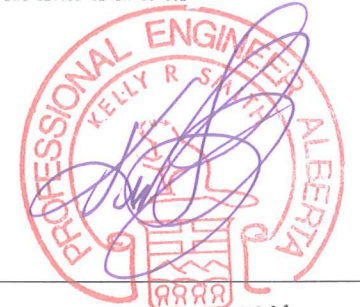
002-27-PM-1020
PARAFFIN ASPHALTENE SOLVENT PUMP MOTOR
MOTOR: BALDOR
DUTY: 1/2 HP
POWER: 3/60/575V
TYPE: XP C-FLG VFD RATED

BLDG 002-BU-27-1000



FOR BUILDING CONTINUATION
SEE DWG 5B1109-02-DR-00-002

FOR BUILDING CONTINUATION
SEE DWG 5B1109-02-DR-00-002



- NOTES:**
- SEE DRAWING # 5B1109-02-DR-00-002 FOR HYDRATE & SCALE INHIBITOR INJECTION PUMPS.
 - CALIBRATION POT TOP NOZZLE FLANGE TO BE AT SAME ELEVATION AS THE VENT NOZZLE OF THE CORRESPONDING STORAGE TANK.
 - ALL INSTRUMENT TAGS SHALL READ AS FULL TAG NUMBER. EXAMPLE: 002-PSV-27-1020A

NO.	REVISION	BY	CHK	DATE
2	AS BUILT	DFD		08/05/14
1	GENERAL REVISION	BS		06/01/14
0	ISSUED FOR CONSTRUCTION	SF		30/09/13
A	ISSUED FOR APPROVAL	DFD		18/08/13

CUSTOMER REFERENCE	FE-CPF-M022	CUSTOMER:	DEVON NEC CORPORATION	JOB NO.	5B1109-02
		PROJECT:	FERRIER CENTRAL OIL BATTERY - LIQUID EXTRACTION PLAT (LEP) LOCATION: LSD 11-02-039-08 W5M		
		TITLE:	CHEMICAL INJECTION PUMP PACKAGE (002-27-PK-1000) P&ID		
www.5Blue.com	SCALE	NTS	DATE	09/07/13	DWG NO.
					5B1109-02-DR-00-001