

002-L-08-1087/1088

**LOUVERS**

ACP AIR CONDITIONING PRODUCTS  
EAS-24", 24" x 24" OPERABLE LOUVRES c/w  
SCREEN, MANUAL WING NUT CONTROL

002-P-08-1022

**SLOP TANK RECYCLE PUMP**

MAKE: NETZSCH  
MODEL: NM031BY02S12B  
CAPACITY: 0.63 m<sup>3</sup>/hr  
DIFF PRESSURE: 576 kPa  
BHP: 0.3 kW

002-PM-08-1022

**SLOP TANK RECYCLE PUMP MOTOR**

MAKE: TECO WESTINGHOUSE  
VOLTAGE: 575V, 60Hz, 3PH  
1HP, 1800RPM, CLASS 1 ZONE 2, GROUP 2A

**PSV-08-1022B**  
**PRESSURE RELIEF**

MAKE: CONSOLIDATED  
MODEL: PN 1905-00DC-2-CC-MS-31-RF-LA-SG10  
SIZE: 1" - 150# x 2" - 150#  
LIQUID TRIM, SWEET SERVICE  
NACE IN PRIMARY & SECONDARY ZONES  
SET @ 677 kPa, SIZING BASED ON BLOCKED FLOW

002-UHG/UHM-08-1080

**HEATER**

MAKE: RUFFNECK  
MODEL: AH-20A-A3B1-A1-A2  
20" FAN, 2930 CFM  
1 1/2" 300# RFWN INLET / OUTLET  
575V, 3PH, 60Hz  
EX-PROOF MOTOR  
CLASS 1, ZONE 2, GROUP 2A

002-EFM-08-1086

**BUILDING EXHAUST FAN MOTOR**

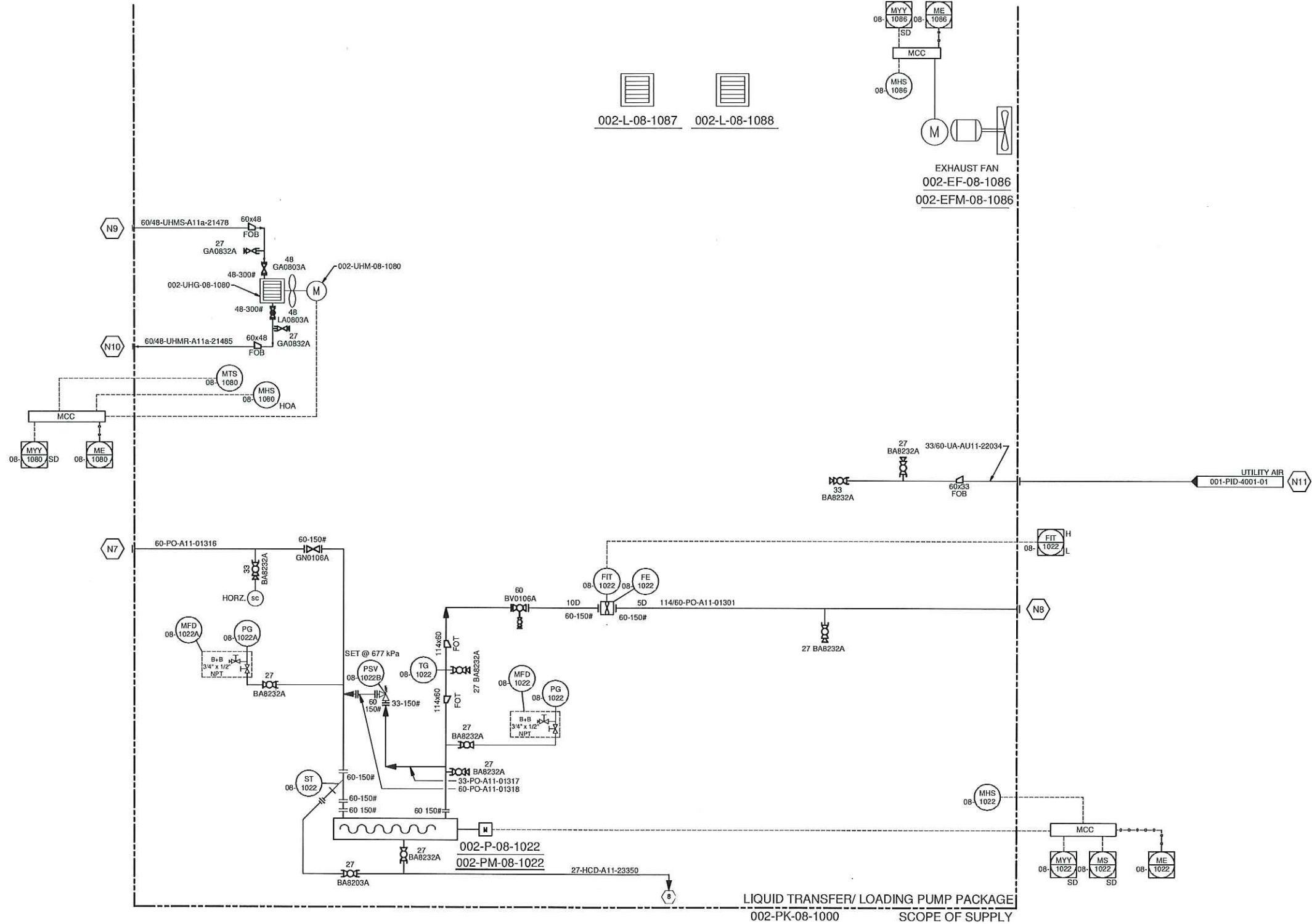
SOPERS 1/4 HP  
575/3/60

002-EF-08-1086

**EXHAUST FAN**

16" EXHAUST FAN, PN KL 16XP3PH

SCHEDULE OF CONNECTIONS			
TAG	DESCRIPTION	SIZE	TYPE
N1	INLET STABILIZED CONDENSATE	89-150#	RFWN
N2	OUTLET STABILIZED CONDENSATE	60-150#	RFWN
N3	INLET STABILIZED CONDENSATE	168-150#	RFWN
N4	OUTLET TRUCK OUT	89-150#	RFWN
N5	INLET PRODUCED WATER	168-150#	RFWN
N6	OUTLET TRUCK OUT	89-150#	RFWN
N7	INLET SLOP TANK	60-150#	RFWN
N8	OUTLET TRUCK OUT	60-150#	RFWN
N9	UHM SUPPLY	60-300#	RFWN
N10	UHM RETURN	60-300#	RFWN
N11	UTILITY AIR	60-150#	RFWN
N12	RECYCLE LINE	60-150#	RFWN
N13	SUMP DRAIN	60-150#	RFWN



**GENERAL NOTES**

- ALL INSTRUMENT TAG NUMBERS ON THIS SHEET SHALL FOLLOW ITS ASSOCIATED EQUIPMENT TAG NUMBERS, UNLESS OTHERWISE INDICATED (EX. PG-00-1010 ON EQUIPMENT 001-V-00-1010, FULL INSTRUMENT TAG NUMBER SHALL BE 001-PG-00-1010).
- WITH AUTOMATIC HIGH & LOW FLOW ADJUSTMENT AND FLOW CUT-OFF AT PRESET VOLUMETRIC FLOW.
- SMART GROUND.
- INCLUDE RUN TIMER.

REV	DESCRIPTION	DATE	BY	CHECK	APR
5	ADDED INSTRUMENT ALARMS	APR 22/2014	JL	SKS	
4	AS BUILT	MAR 06/2014	JL	SKS	
3	REVISED AS NOTED	FEB 19/2014	SL	SKS	
2	REVISED AS NOTED	JAN 24/2014	SL	SKS	
1	REISSUED FOR CONSTRUCTION	DEC 11/2013	MSZ	SKS	
0	ISSUED FOR CONSTRUCTION	OCT 23/2013	SL	SKS	
B	REVISED AS PER MARKUPS	OCT 09/2013	SL	SKS	
A	ISSUED FOR APPROVAL	AUG 19/2013	JP	DC	

STAMPS:

westpower equipment Ltd.  
ABSA AUTH No.: AQP21428  
APEGGA PERMIT TO PRACTICE No.: P07612  
THIS DRAWING IS THE PROPERTY OF WESTPOWER EDP, LTD. AND IS NOT TO BE COPIED, TRANSMITTED, OR USED IN ANY WAY WITHOUT WESTPOWER EQP. CONSENT.

DRAWN: JP	PIPING AND INSTRUMENTATION DIAGRAM	
CHECKED: MT	CLIENT: DEVON	
DATE: 2013/08/06	CONSULTANT: WORLEY PARSONS	
REF: P1299D	CLIENT PO No.: PO-4100001410	LOCATION: LSD: 11-2-39-8 W5M
N/A	DEVON FERRIER LIQUID EXTRACTION PLANT P&ID - STABILIZED CONDENSATE TANK	
SCALE: NTS	DWG No.: P1299D-102-P&ID	SHT No.: 1/1 REV No.: 5