

**PSV-08-1010C/1012B  
PRESSURE RELIEF**

MAKE: CONSOLIDATED  
MODEL: PN 1905-00DC-2-CC-MS-31-RF-LA-SG10  
SIZE: 1"-150# x 2"-150#  
LIQUID TRIM, SWEET SERVICE  
NACE IN PRIMARY & SECONDARY ZONES  
SET @ 986 kPa, SIZING BASED ON BLOCKED FLOW

**002-P-08-1010/1012  
STABILIZED CONDENSATE  
TRANSFER PUMP**

MAKE: ROTH  
MODEL: 987FCV5145SR  
CAPACITY: 6.4 m<sup>3</sup>/hr  
DIFF PRESSURE: 846 kPa  
BHP: 5.5 kW  
c/w ROTH SUPPLIED  
PLAN 65

**002-PM-08-1010/1012  
STABILIZED CONDENSATE  
TRANSFER PUMP MOTOR**

MAKE: BALDOR  
MODEL: 213 TC TEFC  
VOLTAGE: 575V, 60Hz, 3PH  
SPECS: 5.5 KW, 3510RPM, CLASS 1 ZONE 2, XPFC

**002-P-08-1018  
STABILIZED CONDENSATE  
TRUCK LOADING PUMP**

MAKE: MABRE  
MODEL: 3x4x16  
CAPACITY: 37.5 m<sup>3</sup>/hr  
DIFF PRESSURE: 159 kPa  
BHP: 5.5 kW  
c/w PLAN 65

**002-PM-08-1018  
STABILIZED CONDENSATE  
TRUCK LOADING PUMP MOTOR**

MAKE: BALDOR  
MODEL: 254LP TEFC  
VOLTAGE: 575V, 60Hz, 3PH  
SPECS: 5.5 KW, 1200RPM, CLASS 1 ZONE 2, XPFC  
c/w PLAN 65

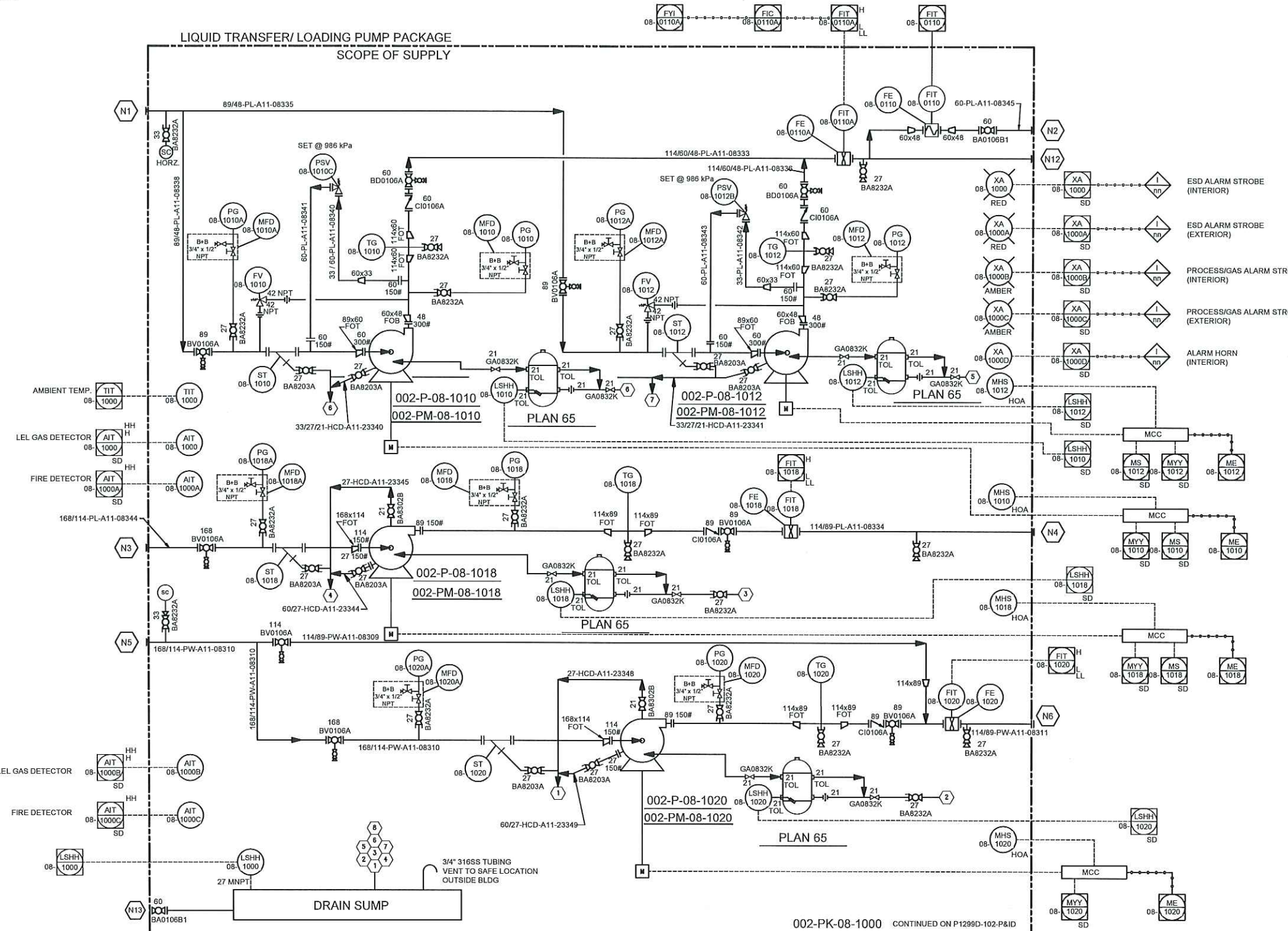
**002-P-08-1020  
PRODUCED WATER  
TRUCK LOADING PUMP**

MAKE: MABRE  
MODEL: 3x4x16  
CAPACITY: 37.5 m<sup>3</sup>/hr  
DIFF PRESSURE: 234 kPa  
BHP: 7.5 kW

**002-PM-08-1020  
PRODUCED WATER  
TRUCK LOADING PUMP MOTOR**

MAKE: BALDOR  
MODEL: 256LP  
VOLTAGE: 575V, 60Hz, 3PH  
SPECS: 10HP, 1200RPM, CLASS 1 ZONE 2, XPFC

SCHEDULE OF CONNECTIONS			
TAG	DESCRIPTION	SIZE	TYPE
N1	INLET STABILIZED CONDENSATE	89-150#	RFWN
N2	OUTLET STABILIZED CONDENSATE	60-150#	RFWN
N3	INLET STABILIZED CONDENSATE	168-150#	RFWN
N4	OUTLET TRUCK OUT	89-150#	RFWN
N5	INLET PRODUCED WATER	168-150#	RFWN
N6	OUTLET TRUCK OUT	89-150#	RFWN
N7	INLET SLOP TANK	60-150#	RFWN
N8	OUTLET TRUCK OUT	60-150#	RFWN
N9	UHM SUPPLY	60-300#	RFWN
N10	UHM RETURN	60-300#	RFWN
N11	UTILITY AIR	60-150#	RFWN
N12	RECYCLE LINE	60-150#	RFWN
N13	SUMP DRAIN	60-150#	RFWN



**GENERAL NOTES**

- ALL INSTRUMENT TAG NUMBERS ON THIS SHEET SHALL FOLLOW ITS ASSOCIATED EQUIPMENT TAG NUMBERS, UNLESS OTHERWISE INDICATED (EX. PG-00-1010 ON EQUIPMENT 001-V-00-1010, FULL INSTRUMENT TAG NUMBER SHALL BE 001-PG-00-1010).
- WITH AUTOMATIC HIGH & LOW FLOW ADJUSTMENT AND FLOW CUT-OFF AT PRESET VOLUMETRIC FLOW.
- SMART GROUND.
- INCLUDE RUN TIMER.

REV	DESCRIPTION	DATE	BY	CHECK	APR
6	REVISED INSTRUMENT ALARMS	MAY 06/2014	JL	SKS	
5	ADDED INSTRUMENT ALARMS	APR 22/2014	JL	SKS	
4	AS BUILT	MAR 26/2014	JL	SKS	
3	REVISED AS NOTED	FEB 19/2014	SL	SKS	
2	ADDED FV-1010 & FV-1012	JAN 24/2014	SL	SKS	
1	REISSUED FOR CONSTRUCTION	DEC 11/2013	MSZ	SKS	
0	ISSUED FOR CONSTRUCTION	OCT 23/2013	SL	SKS	
B	REVISED AS PER MARKUPS	OCT 09/2013	SL	SKS	
A	ISSUED FOR APPROVAL	AUG 19/2013	JP	DC	



**westpower equipment ltd.**  
ABSA AUTH No.: AQP21428  
APEGGA PERMIT TO PRACTICE No.: P07612  
THIS DRAWING IS THE PROPERTY OF WESTPOWER EGP. LTD. AND IS NOT TO BE COPIED, TRANSMITTED, OR USED IN ANY WAY WITHOUT WESTPOWER EGP. CONSENT.

DRAWN: JP	PIPING AND INSTRUMENTATION DIAGRAM	
CHECKED: MT	CLIENT: DEVON	
DATE: 2013/08/06	CONSULTANT: WORLEY PARSONS	
UNIT: P1299D	CLIENT PO No.: PO-4100001410	LOCATION: LSD: 11-2-39-8 W5M
REF: N/A	TITLE: DEVON FERRIER LIQUID EXTRACTION PLANT P&ID - STABILIZED CONDENSATE TANK	
TAG No.:	DWS No.: P1299D-101-P&ID	SHT No.: 1/1
SCALE: NTS		REV No.: 6