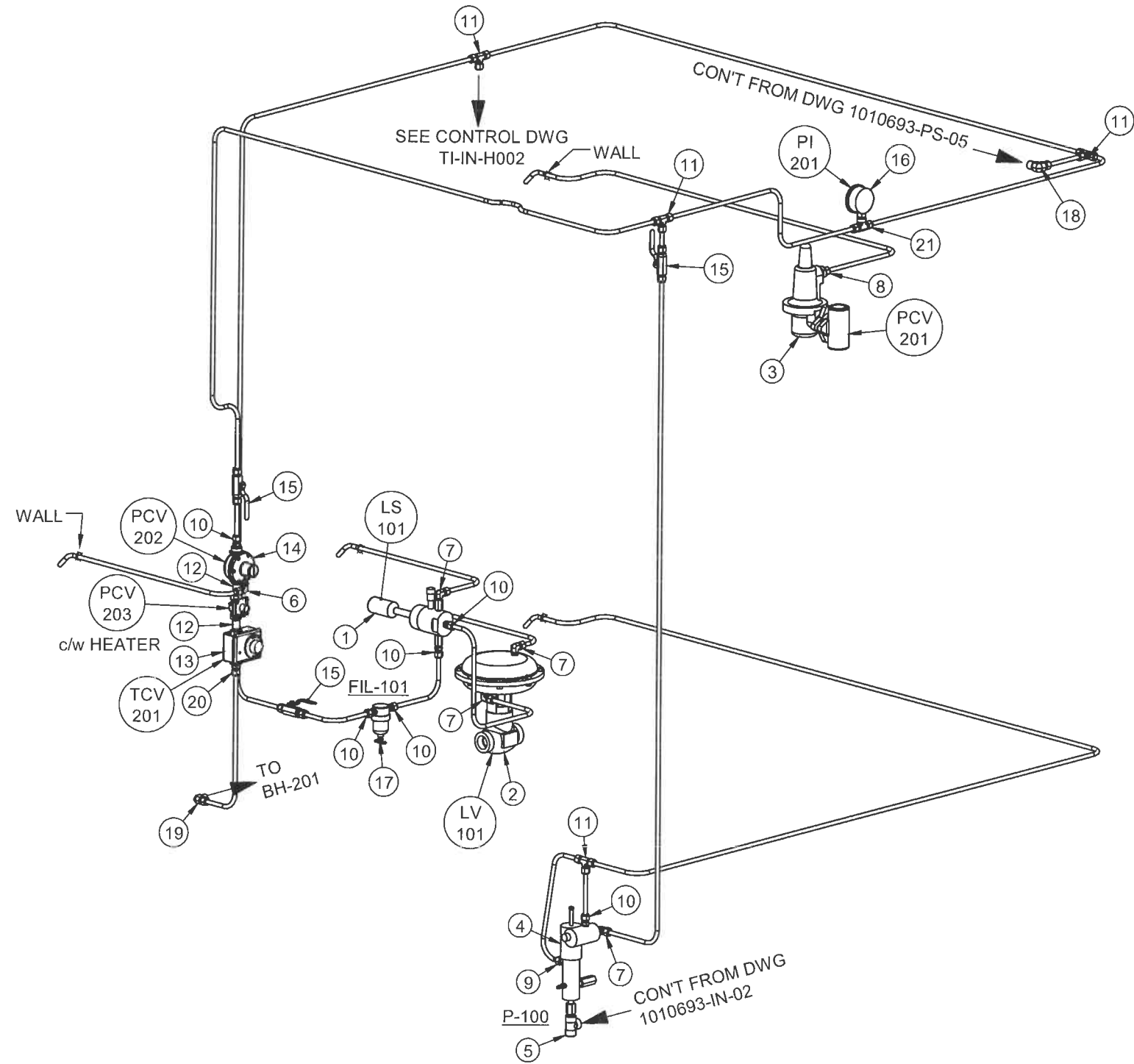


THIS DRAWING IS THE PROPERTY OF CRIMTECH SERVICES LTD. AND IS NOT TO BE COPIED, REPRODUCED OR DISTRIBUTED WITHOUT THE PRIOR WRITTEN CONSENT OF CRIMTECH SERVICES LTD.



ITEM	QTY	DESCRIPTION	ERP
1	1	LINC, 282-22-10, 2IN NPT, LEVEL SWITCH WITH POLY FLOAT	1010247
2	1	FISHER, 02-X1, 1IN NPT, 3/8IN ALLOY 6 STELLITE TRIM D2 FC DUMP VALVE (NACE COMPLIANT)	1006553
3	1	FISHER, 627, 1IN NPT DI BODY 1/8 ALUMINIUM 15-40 PSI SPRING, CONTROL REGULATOR 1000	1006707
4	1	LINC, 87TA-11-61, 1/4IN , PNEUMATIC CHEMICAL PUMP	1000447
5	1	TEE, 1/4IN FS THRD 3000LB, SA 105 N	1004420
6	1	SWAGELOK, SS-600-2-2, 3/8IN, TUBING FITTING SS 3/8IN TUBING X 1/8IN MNPT 90 DEGREE ELBOW	1000428
7	4	SWAGELOK, SS-600-2-4, 3/8IN X 1/4IN, TUBING FITTING SS 3/8IN TUBING X 1/4IN MNPT 90 DEGREE ELBOW	1000429
8	1	SWAGELOK, SS-600-1-12, 3/8IN, TUBING FITTING SS 3/8IN TUBING X 3/4IN MNPT MALE CONNECTOR	1000422
9	1	SWAGELOK, SS-600-1-2, 3/8IN, TUBING FITTING SS 3/8IN TUBING X 1/8IN MNPT MALE CONNECTOR	1000424
10	6	SWAGELOK, SS-600-1-4, 3/8IN X 1/4IN, TUBING FITTING SS 3/8 TUBING X 1/4IN MNPT MALE CONNECTOR	1000425
11	4	SWAGELOK, SS-600-3, 3/8IN, TUBING FITTING SS 3/8IN TUBING TO TUBING UNION TEE	1000432
12	2	NIPPLE, 3/8IN X 2IN SCH 80, SA 106 GRADE B	1000050
13	1	CATA-DYNE, AC-TC-4000N-7, 12IN X 24IN, HEATER TEMPERATURE CONTROLLER	1001099
14	1	FISHER, TYPE 912, , REGULATOR (GAS)	1000014
15	3	HY-LOK, SS-BVH-6T, SS BALL VALVE WITH 3/8 IN.TUBING ENDS.	1008694
16	1	WIKA, 9106842, 2 1/2IN FACE 0-60 PSI 1/4IN NPT BM, DUAL SS CONNECTION PRESSURE GAUGE	1004166
17	1	HEADLINE, 315A-60, 1/4IN, HEADLINE FILTER 315A-1/4 ASSY.AL HEAD/BOWL..C/W 12-32-60C	1000465
18	1	SWAGELOK, SS-600-2-8, 3/8IN X 1/2IN, TUBING FITTING SS 3/8IN TUBING X 1/2IN MNPT 90 DEGREE ELBOW	1000431
19	1	SWAGELOK, SS-600-2-6, 3/8IN, TUBING FITTING SS 3/8IN TUBING X 3/8IN MNPT 90 DEGREE ELBOW	1000430
20	1	SWAGELOK, SS-600-1-6, 3/8IN, TUBING FITTING SS 3/8IN X 3/8IN TUBING MNPT MALE CONNECTOR	1000426
21	1	SWAGELOK, SS-600-3TTF, 3/8IN X 1/4IN, TUBING FITTING SS 3/8IN TUBING X 1/4IN FNPT FEMALE BRANCH TEE	1000434

NOTES:

1. SWAGELOK FITTINGS TO BE STAINLESS STEEL.
2. PROCESS TUBING TO BE 1/2" (0.049WT) STAINLESS STEEL.
3. SIGNAL AND VENT TUBING TO BE 3/8" (0.035WT) STAINLESS STEEL.
4. INSTRUMENTS TO BE INDIVIDUALLY VENTED OUTSIDE.
5. ALL VENTS TO BE 60" FROM ELECTRICAL JUNCTION BOXES.

NO.	DATE	REVISION DESCRIPTION	BY	CHKD	DISCIPLINE	APPD BY	DATE
0	05 03 17	ISSUED FOR CONSTRUCTION	MJP	JMB	PROCESS		
1	06 01 17	ADDED BOM, UPDATED TO NEW STANDARDS	JMB	DJB	MECHANICAL		
2	06 10 04	REVISED ARRANGEMENT TO ADD 12"x24" HEATER BOX	JHK	DJB	STRUCTURAL		
3	07 02 13	UPDATED DRAWING	JHK	DJB	INSTRUMENT		
-	-	-	-	-	ELECTRICAL		
-	-	-	-	-	Q.C.		
-	-	-	-	-			
-	-	-	-	-			

This document may be out-of-date because it has file references that may have been updated. (more...)

CRIMTECH
Services Ltd
PH 1-800-993-9958 WWW.CRIMTECH.COM

PATENT AND COPYRIGHT NOTICE
THIS DRAWING HAS NOT BEEN PUBLISHED AND IS THE SOLE PROPERTY OF CRIMTECH SERVICES LTD. AND IS LOANED TO THE BORROWER FOR THEIR CONFIDENTIAL USE ONLY. NO PART OF THIS DRAWING MAY BE REPRODUCED OR TRANSMITTED IN ANY FORM OR BY ANY MEANS, ELECTRONIC OR MECHANICAL, INCLUDING PHOTOCOPYING, RECORDING, OR BY ANY INFORMATION STORAGE AND RETRIEVAL SYSTEM, WITHOUT THE EXPRESS WRITTEN PERMISSION OF CRIMTECH SERVICES LTD. THE FLODRIP WELLHEAD SEPARATOR AND FLODRIP WELLHEAD SYSTEM ARE TRADEMARKS OF CRIMTECH SERVICES LTD.

SWEET GAS SEPARATOR PACKAGE
MODEL NO. 8145BXP-150BF

INSTRUMENT LOOP DIAGRAM - FUEL GAS AND VENTS

ORDER BY: HUSKY ENERGY INC
END USER: HUSKY ENERGY INC

LSD: - CLIENT NO.: - SCALE: 1:13

SIZE ERP NO.: - DRAWING NO.: 1010693-IN-01 REV 3

PRINTED: 2/15/2007 R:\Drawings\Finished Goods\FloDrp\8145A\8145BXP-150BFH (1010693)\1010693-IN-01