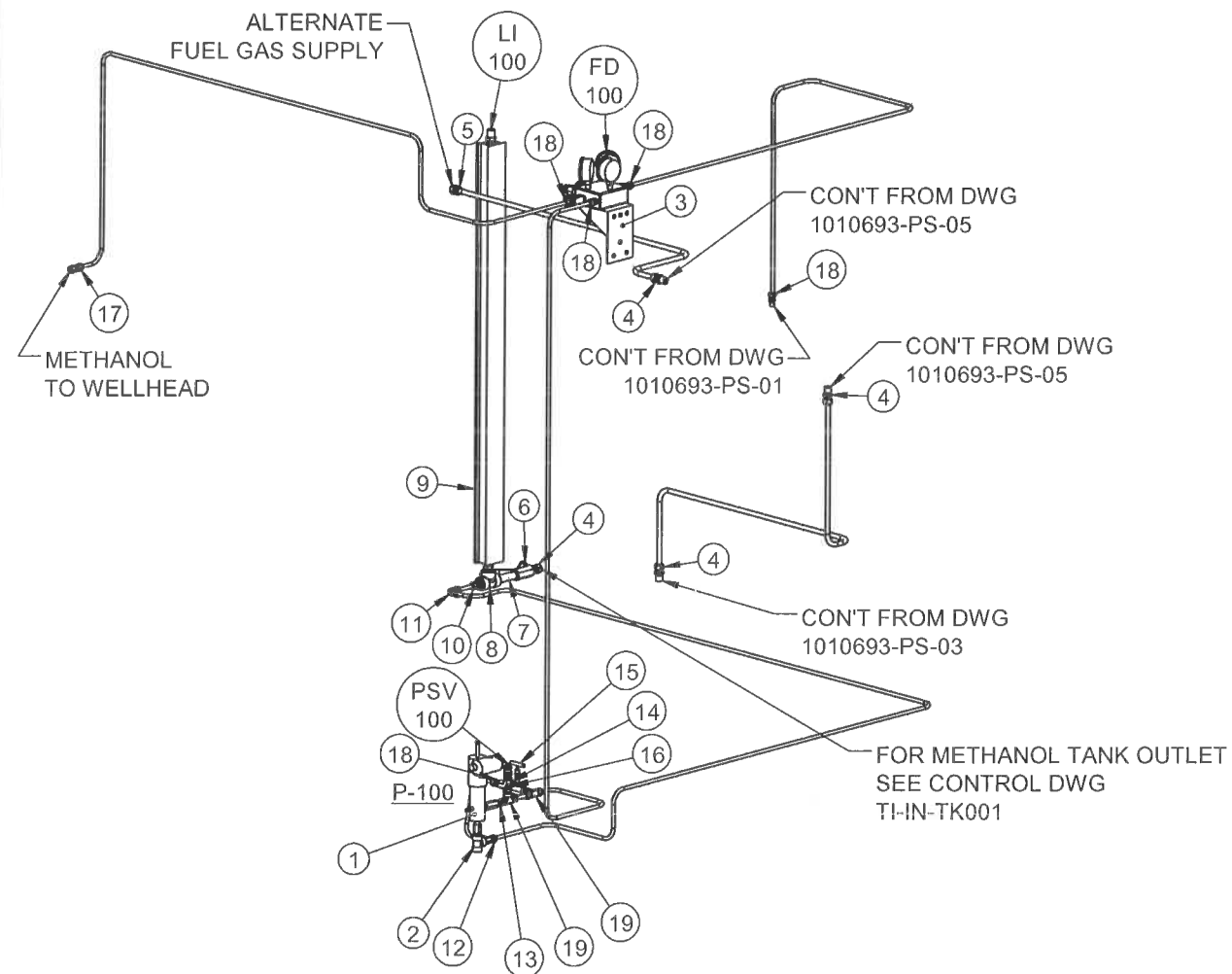


THIS DRAWING IS THE PROPERTY OF CRIMTECH SERVICES LTD. AND IS NOT TO BE COPIED, REPRODUCED OR DISTRIBUTED WITHOUT THE PRIOR WRITTEN CONSENT OF CRIMTECH SERVICES LTD.




ITEM	QTY	DESCRIPTION	ERP
1	1	LINC, 87TA-11-61, 1/4IN , PNEUMATIC CHEMICAL PUMP	1000447
2	1	TEE, 1/4IN FS THRD 3000LB, SA 105 N	1004420
3	1	TRINITY, D.D.-TWO, 1/4IN 6000LB FNP 316 STAIN, FLOW DIVIDER	1003050
4	4	SWAGELOK, SS-810-1-8, 1/2IN, TUBING FITTING SS 1/2IN TUBING X 1/2IN MNPT MALE CONNECTOR	1000441
5	1	SWAGELOK, SS-810-1-6, 1/2IN, TUBING FITTING SS 1/2IN TUBING X 3/8IN MNPT MALE CONNECTOR	1004013
6	1	MERIDIAN, M12B, 1/2IN 2000LB, THRD RP NACE TRIM CS BODY BALL VALVE	1006299
7	1	NIPPLE, 1/2IN X 4IN SCH 80, SA 106 GRADE B	1000869
8	1	TEE, 1/2IN FS THRD 3000LB, SA 105 N	1001394
9	1	GRESCHNER, SG48BC, 48IN, LEVEL RATE GAUGE	1000295
10	1	SWAGELOK, SS-600-1-8, 3/8IN X 1/2IN, TUBING FITTING SS 3/8 TUBING X 1/2IN MNPT MALE CONNECTOR	1000427
11	1	SWAGELOK, SS-600-9, 3/8IN, TUBING FITTING SS 3/8IN TUBING TO TUBING UNION 90 DEG ELBOW	1000439
12	1	SWAGELOK, SS-600-3TMT, 3/8IN X 1/4IN, TUBING FITTING SS 3/8 TUBING X 1/4IN MNPT MALE RUN TEE	1000433
13	1	SWAGELOK, SS-6-TA-1-4, 3/8IN X 1/4IN, TUBING FITTING SS 3/8IN TUBING 1/4IN MNPT MALE ADAPTER	1000420
14	1	HY-LOK, RV2MF4NEP-S316, SS RELIEF VALVE, SET TO 1000 PSI..	1008902
15	1	LCO TECH, PNV-H-C-4-MF, 1/4IN MNPT X FNPT, A105 CS BODY AND BONNET, TEFLON, NEEDLE VALVE, 6000 PSI	1010124
16	1	PLUG HEX, 1/4IN FS THRD, SA 105 N	1000766
17	1	SWAGELOK, SS-600-6, 3/8IN, TUBING FITTING SS 3/8IN TUBING TO TUBING UNION	1000436
18	5	SWAGELOK, SS-600-1-4, 3/8IN X 1/4IN, TUBING FITTING SS 3/8 TUBING X 1/4IN MNPT MALE CONNECTOR	1000425
19	2	SWAGELOK, SS-600-3TTF, 3/8IN X 1/4IN, TUBING FITTING SS 3/8IN TUBING X 1/4IN FNPT FEMALE BRANCH TEE	1000434

NOTES:

1. SWAGELOK FITTINGS TO BE STAINLESS STEEL.
2. PROCESS TUBING TO BE 1/2" (0.049WT) STAINLESS STEEL.
3. SIGNAL AND VENT TUBING TO BE 3/8" (0.035WT) STAINLESS STEEL.
4. INSTRUMENTS TO BE INDIVIDUALLY VENTED OUTSIDE.
5. ALL VENTS TO BE 60" FROM ELECTRICAL JUNCTION BOXES.

NO.	DATE	REVISION DESCRIPTION	BY	CHKD	DISCIPLINE	APPD BY	DATE
0	06 01 17	ISSUED FOR CONSTRUCTION	MJP	JMB	PROCESS		
1	06 10 04	REVISED ARRANGEMENT TO ADD 12"x24" HEATER BOX	JHK	DJB	MECHANICAL		
2	07 02 13	UPDATED DRAWING	JHK	DJB	STRUCTURAL		
-	-	-	-	-	INSTRUMENT		
-	-	-	-	-	ELECTRICAL		
-	-	-	-	-	ESTIMATION		
-	-	-	-	-	Q.C.		
-	-	-	-	-	ESTIMATION		



PH 1-800-993-9958 WWW.CRIMTECH.COM

SWEET GAS SEPARATOR PACKAGE
MODEL NO. 8145BXP-150BF
INSTRUMENT LOOP DIAGRAM - METHANOL

PATENT AND COPYRIGHT NOTICE
THIS DRAWING HAS NOT BEEN PUBLISHED AND IS THE SOLE PROPERTY OF CRIMTECH SERVICES LTD. AND IS LENT TO THE BORROWER FOR THEIR CONFIDENTIAL USE ONLY. NO PART OF THIS DRAWING MAY BE REPRODUCED OR TRANSMITTED IN ANY FORM OR BY ANY MEANS, ELECTRONIC OR MECHANICAL, INCLUDING PHOTOCOPYING, RECORDING, OR BY ANY INFORMATION STORAGE AND RETRIEVAL SYSTEM, WITHOUT THE EXPRESS WRITTEN PERMISSION OF CRIMTECH SERVICES LTD. THE FLODRIP WELLHEAD SEPARATOR AND FLODRIP WELLHEAD SYSTEM ARE TRADEMARKS OF CRIMTECH SERVICES LTD.

ORDER BY:
HUSKY ENERGY INC

END USER:
HUSKY ENERGY INC

CLIENT NO.:
-

SCALE:
1:20

DRAWING NO.:
1010693-IN-02

REV
2

This document may be out-of-date because it has file references that may have been updated. (more...)

PRINTED: 2/13/2007 R:\Drawings\Finished Goods\Flodrip\8145A\8145BXP-150BFH (1010693)\1010693-IN-02