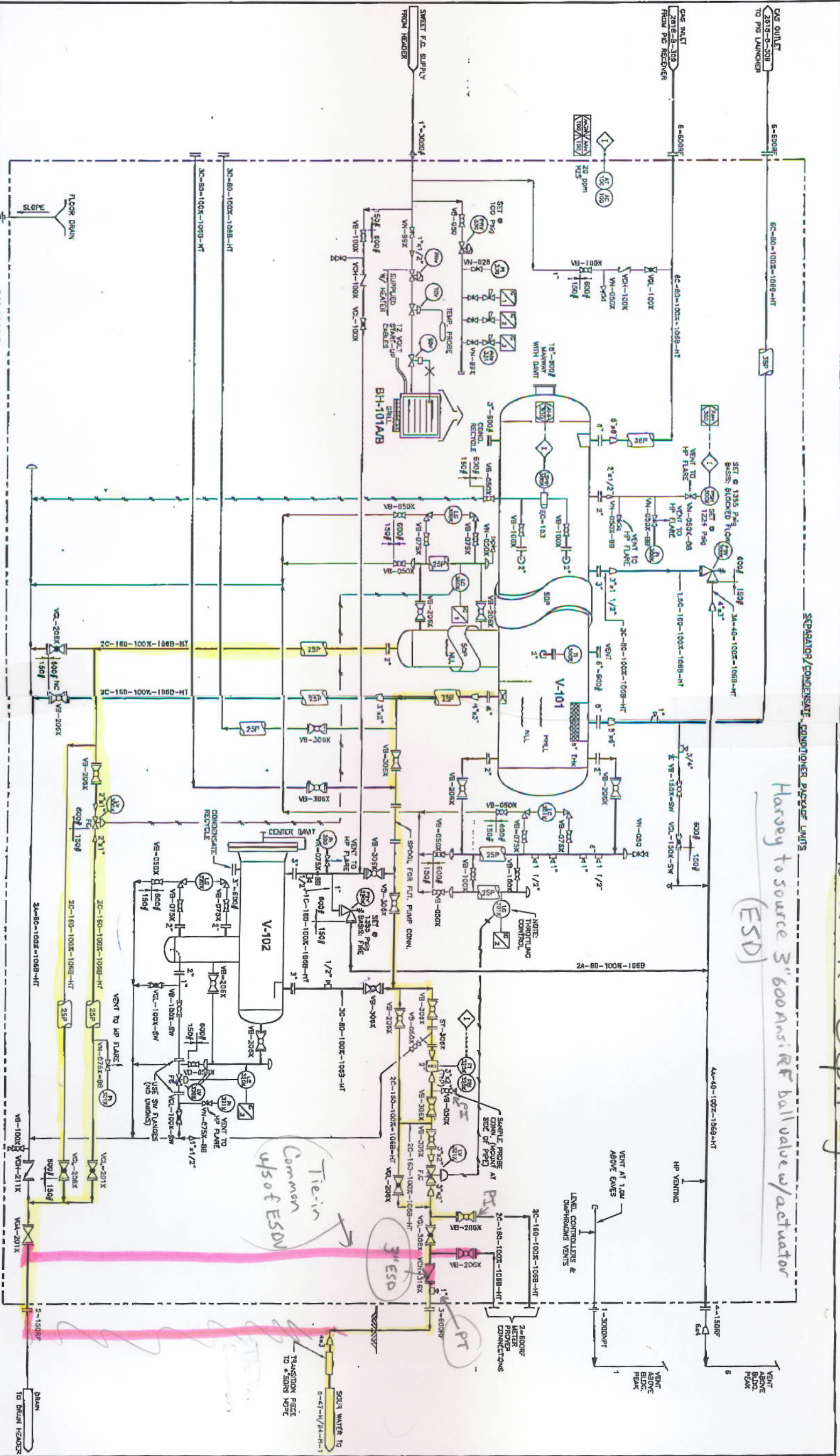


Date Time



Harvey to source 3" 600 ANSI RF ball valve w/ actuator (ESD)

D-29-H Sep. Pkg.

Tie-in Common w/ soft ESD

3\"/>

NOTE:
1. INSULATE PIPING UNDERGROUND TO BOTTOM OF TRENCH.

BH-101A/B
CATALYTIC HEATING HEATER
30,000 BTU/H

V-101
INLET SEPARATOR
SIZE: 42" (1067 mm) ID x 15'-0" (4572 mm) S/S 3-PHASE
D.P.: 1350 PSIG (9310 kPa) @ 110°F (43°C)
BOC: 15" NPS (406 mm) O.D. x 22" (559 mm) S/S

V-102
CONDENSATE CONDITIONER
SIZE: 24" (610 mm) ID x 7'-6" (2286 mm) S/S 2-PHASE
D.P.: 1350 PSIG (9310 kPa) @ 110°F (43°C)
BOC: 10" NPS (254 mm) O.D. x 20" (508 mm) S/S
ELEVATION: FIELD FL-24 WATER PAK x 18" LONG

REVISIONS

NO.	DATE	BY	DESCRIPTION
1			
2			

REVISIONS

NO.	DATE	BY	DESCRIPTION
1			
2			

REVISIONS

NO.	DATE	BY	DESCRIPTION
1			
2			

ENCANA

TARTAN ENGINEERING LTD
LADYFERN GAS DEVELOPMENT
SEPARATOR PACKAGE PKID

WELLSITE: 4-29-H/94-H-1
RIS (41 SW): AI-2810-B-101

AA000000A