

CANADIAN NATURAL RESOURCES

1228 60 10 55335-39 CNRL

Site Location: Wabasca, AB

Building code: Alberta Building Code (ABC) 2006
CAN/CA S16-05

**THE DATA SHOWN HERE IS FOR
REFERENCE OF THE ENGINEER. THIS
PAGE IS TO BE REVISED BY THE
ENGINEER WITH APPROPRIATE
INFORMATION.**

Loads:

$q1/50 = 0.35\text{kPa}$ $Sa(0.2) = 0.12$
 $Ce = 1.099$ $Sa(0.5) = 0.056$
 $Ss = 1.4\text{kPa}$ $Sa(1.0) = 0.023$
 $Sr = 0.1\text{kPa}$ $Sa(2.0) = 0.006$
Roof = 25.00pcf Site class = D

Product: Plastic Resin @ 50pcf
Clearance: 68.81in under discharge

Number of Legs: 4

NOTE: All loading is assumed to be transferred through the legs

Maximum Unfactored Reactions (kips/Leg):

Vert (kips) Hor (kips)
Dead Load (DL) = 4.56 0.00
Product Load (PL) = 77.68 0.00
Wind Load (WL) = +/- 21.47 4.11 (vertical reactions may reverse)
Seismic Load (EL) = +/- 45.26 8.75 (vertical reactions may reverse)
Roof Load (RL) = 0.98 0.00
Snow load (SL) = 0.98 0.00

Factored Load Combinations (kips/Leg):

Vert (kips) Hor (kips)
1.4 (D+P) = 114.53 0.00
1.25(D+P) + 1.5L + 0.5S = 104.22 0.00
1.25(D+P) + 1.5L + 0.4W = 112.32 1.64
1.25(D+P) + 1.5S + 0.5L = 104.22 0.00
1.25(D+P) + 1.5S + 0.4W = 112.32 1.64
1.25(D+P) + 1.4W + 0.5L = 132.81 5.75
1.25(D+P) + 1.4W + 0.5S = 132.81 5.75
0.9D - 1.4W = -26.34 5.75 ("-" denotes uplift)
1.0(D+P) + 1.0E + 0.5L + 0.25S = 128.80 8.80
1.0(D+P) - 1.0EL = 36.55 8.80

Note:


- Customer is responsible to notify Meridian Manufacturing Group (MMG) if design conditions are other than noted.
- MMG does not design and is not responsible for the design, materials, or workmanship of the foundation.
- Due to the wide variation of Building and Zoning Codes and their interpretations, MMG does not warrant our products to comply with any Building or Zoning Code requirements, permit requirements, design procedure, design load, material or equipment requirements, fabrication procedure, or work procedure, except as specified on approval drawings.
- Customer is responsible to notify MMG if additional loads will exist or if the structure will be modified by the customer in any way.

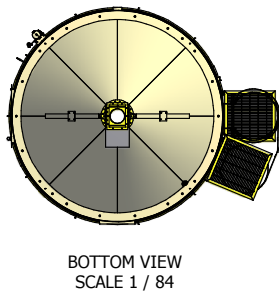
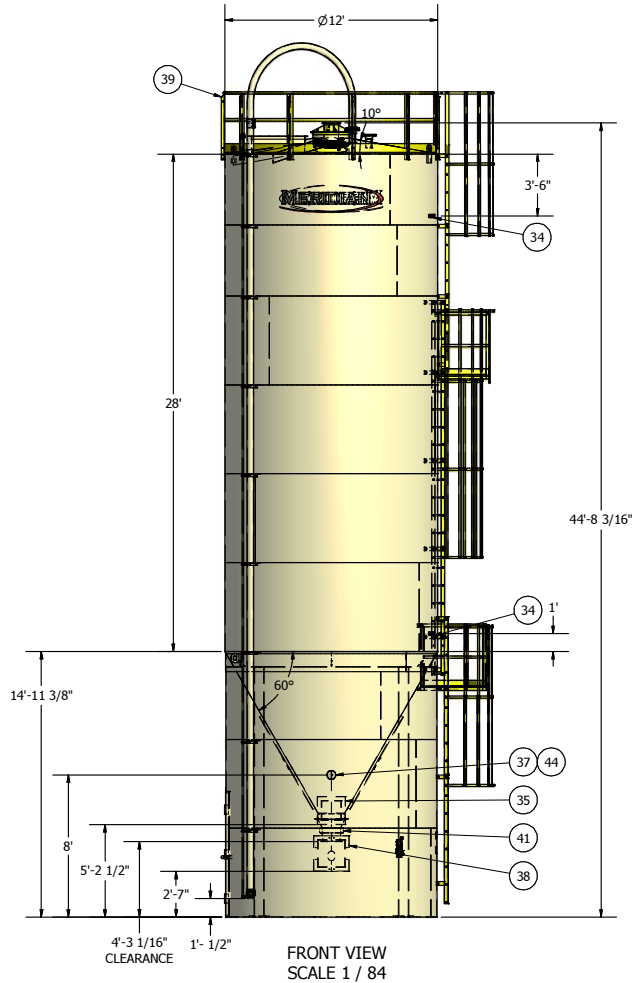
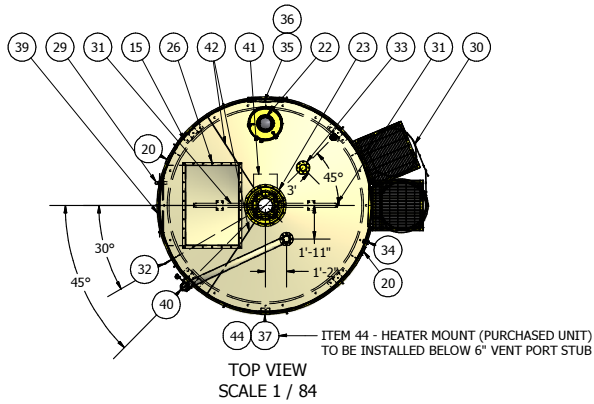
Use 2x Ø1" anchor bolts at each leg
Use Ø1" anchor bolts around skirt base
Embedment length to be determined by foundation engineer

14ga - 7ga 4' & 5' coil:
Slit edge, pickled & oiled, hot rolled, ASTM A1011M CS TYPE B

HSS. Tubing material:
ASTM A500-07 Grade B & C

3/16" plate, coil & flat bar material:
ASTM A36

		THIS DRAWING IS THE EXCLUSIVE PROPERTY OF MERIDIAN MANUFACTURING GROUP AND MAY NOT BE DUPLICATED BY ANY MEANS WITHOUT THE SPECIFIC PERMISSION FROM AN AUTHORITY OF MERIDIAN MANUFACTURING GROUP	
www.meridianmfg.com		PROJECT NAME: PAW SERIAL: PAW1228601055335-39	
DRAWN BY: PAW	DRAWN BY DATE: 2/16/2012	SHEET SIZE: B - SIZE	CUSTOM BIN ASSEMBLIES
CHECKED BY:	CHECKED BY DATE:	REVISION: A	PART DESCRIPTION: 1228-60-10 (C) SO55335-39 CNRL CALGARY
			PART/DRAWING NUMBER: SO55335-39



PARTS LIST			
ITEM	QTY	PART#	DESCRIPTION
1	1	27153	SIDEWALL 10GA 5' x 12'DIA
2	3	27152	SIDEWALL 12GA 5' x 12'DIA
3	2	27053	SIDEWALL 10GA 4' x 12'DIA
4	2	SO55335-39-100	CUSTOM SIDE WALL COIL
6	1	SO55335-39-102	CUSTOM SIDE WALL COIL
7	8	21211	CONE SHEET 12' 60° 12Ga x8
8	1	22050	RING HOPPER 18" OD x 4" x 1/4", 55 3/4" LG
9	2	SO55335-39-103	CUSTOM ROOF SHEET
10	1	SO55335-39-115	RING ROOF 25" OD x 8" X 1/4", 77 3/4" LG
11	1	SO55335-39-104	CUSTOM LEG RING VERTICAL BAND
12	1	SO55335-39-105	CUSTOM LEG RING HORIZONTAL BAND
13	6	22115	RING SUPPORT INTERNAL GUSSET
14	4	SO55335-39-106	CUSTOM LEG
15	4	SO55335-39-107	CUSTOM LEG PAD
17	1	19977	ALL IN ONE WARNING DECAL
18	1	18128	HOLDER FOR MANUAL OMC-1
19	1	22376	SEGMENT 12' 3/8 X 5 X 142.5
20	2	23434	LIFTING LUG HD 1" x 6" x 12"
21	1	28162	LIQUID FLANGE
22	1	SO55335-39-108	CUSTOM Ø22" TRIPLE LATCH MANHOLE WITH 8" PVH
23	1	SO55335-39-109	YELLOW COVERPL. W 10" FL. & GUY WIRE BRKTS
25	2	20029	DECAL MMG BIN DECAL 70IN LG
26	1	SO55335-39-111	HILLSIDE FILTER MOUNT FLANGE
27	1	SO55335-39-112	HILLSIDE FILTER MOUNT STUB
29	1	SO55335-39-120	DOOR ASSEMBLY
30	1	SO55335-39-130	OSHA LADDER ASSY (SEE DWG FOR TAB LOC)
31	2	SO55335-39-118	CUSTOM VIBRATOR MOUNT ASSEMBLY
32	1	SO55335-39-119	LEG RING LIFT LUG W/ REPAD
33	1	SO55335-39-137	4" ANSI FL W/ STUB & COVER (FOR BINDER)
34	2	18853	1 1/2" NPT MILD STEEL FULL COUPLER
35	1	SO55335-39-160	13" EXHAUST FAN MOUNT
36	1	SO55335-39-161	18" AUGER THRU WINDOW
37	1	SO55335-39-162	6" VENT STUB
38	1	SO55335-39-163	AUGER WINDOW COVER
39	1	SO55335-39-164	CUST. PERIM RAIL 12' W/ SELF CLOSING DOOR
40	1	SO55335-39-140	FILL TUBE/AIR LINE ASSY
41	1	SO55335-39-150	DISCHARGE ASSY (W/ SALINA GATE)
42	2	SO55335-39-113	HILLSIDE FILTER MOUNT STIFFENER LONG
43	2	SO55335-39-114	HILLSIDE FILTER MOUNT STIFFENER SHORT
44	1	SO55335-39-134	HEATER MOUNT (RUFFNECK 10KWFX5, PURCHASED)
56	1		MILL CERT & DOC PKG
57	1		INCLUDE JIGGING FOR LOADING
58	1		ENGINEER STAMPED DRAWINGS (TBD)

TANK SPECIFICATIONS:
CAPACITY: 3598 ft³ (3058 Bu)
PRESSURE / VAC RATING: ±0.5 PSI
FREE FLOWING PRODUCT WITH NO BRIDGING

SAND BLAST (INTERIOR, LEGS, RING & BRACING)
TO MERIDIAN SPEC SSPC SP 6

POWDER COAT SPECIFICATIONS:
DOUBLE COAT EPOXY AIR WHITE INSIDE, ZINC
OUTSIDE & BAKE @ 200° RE EPOXY INSIDE, RE
POWDER OUTSIDE W/ BONE WHITE & RE BAKE
UNTIL CURED
ACCESSORIES: SAFETY YELLOW

CUSTOMER APPROVAL

- 1. REVIEWED AND ACCEPTED WITH NO COMMENT
- 2. REVISE AND RESUBMIT - WORK MAY PROCEED SUBJECT TO INCORPORATION OF COMMENTS
- 3. REVISE AND RESUBMIT - WORK SHALL NOT PROCEED

SIGN: _____ DATE: _____

REV	DESCRIPTION	DATE	PAW

REVISION HISTORY

Tolerances unless otherwise specified:
XX = ±0.03
X = ±0.1
XXX = ±0.01
XXXX = ±0.01
± = ±0.5°

Symbol
Tolerance
± = ±0.005
Ø = 0.015
± = 0.015

MERIDIAN MANUFACTURING GROUP
www.meridianmfg.com

DRAWN BY: PAW
DRAWN BY DATE: 2/16/2012
CHECKED BY: PAW
CHECKED BY DATE: 2/16/2012

SHEET SIZE: B - SIZE
REVISION: A

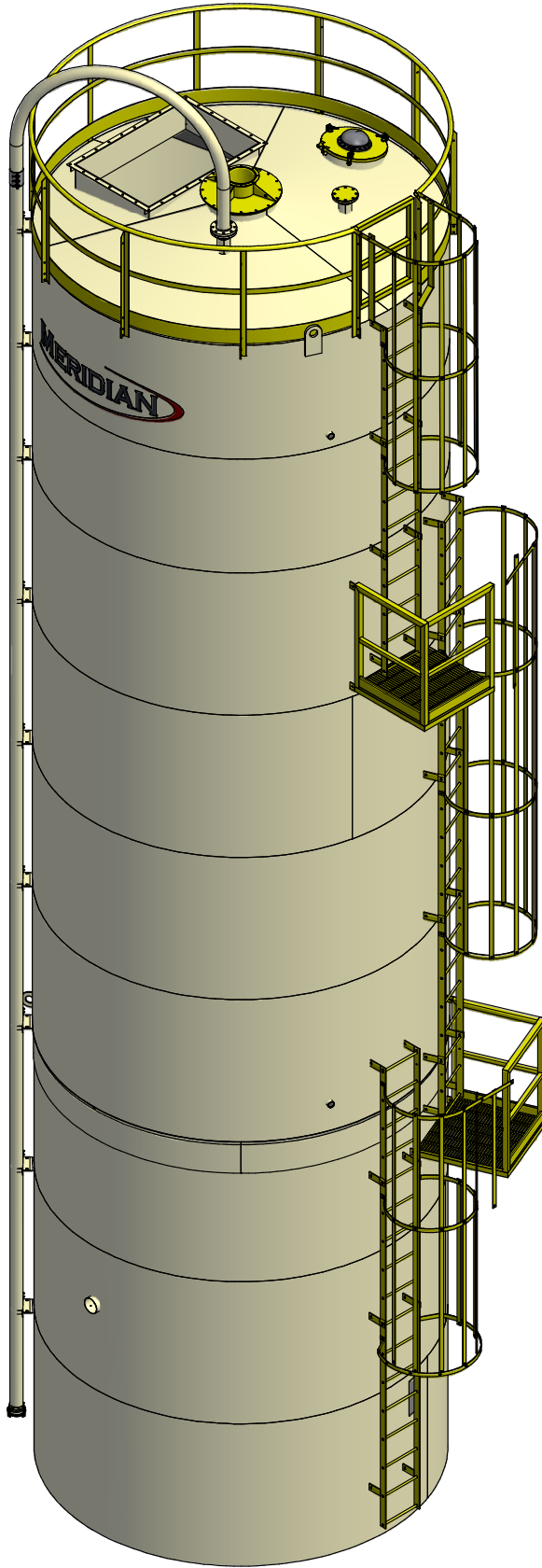
THIS DRAWING IS THE EXCLUSIVE PROPERTY OF MERIDIAN MANUFACTURING GROUP AND MAY NOT BE DUPLICATED BY ANY MEANS WITHOUT THE SPECIFIC PERMISSION FROM AN AUTHORITY OF MERIDIAN MANUFACTURING GROUP

PROJECT NAME: _____
MATERIAL: _____
PART NUMBER: 04141-56-0000

PART DESCRIPTION: CUSTOM BIN ASSEMBLIES
PART DRAWING NUMBER: SO55335-39

1228-60-10 (C) SO55335-39 CNRL CALGARY

CUSTOMER MUST RETURN DRAWINGS APPROVED 4 WEEKS UPON RECEIPT TO ENSURE SCHEDULED DELIVERY DATE. FAILURE TO DO SO WILL RESULT IN PROJECT BEING RE-SCHEDULED



ISO VIEW
SCALE 1/40

PARTS LIST			
ITEM	QTY	PART#	DESCRIPTION
1	1	27153	SIDEWALL 10GA 5' x 12'DIA
2	3	27152	SIDEWALL 12GA 5' x 12'DIA
3	2	27053	SIDEWALL 10GA 4' x 12'DIA
4	2	S055335-39-100	CUSTOM SIDE WALL COIL
6	1	S055335-39-102	CUSTOM SIDE WALL COIL
7	8	21211	CONE SHEET 12' 60° 12Ga x8
8	1	22050	RING HOPPER 18" OD x 4" x 1/4", 55 3/4" LG
9	2	S055335-39-103	CUSTOM ROOF SHEET
10	1	S055335-39-115	RING ROOF 25" OD X 8" X 1/4", 77 3/4" LG
11	1	S055335-39-104	CUSTOM LEG RING VERTICAL BAND
12	1	S055335-39-105	CUSTOM LEG RING HORIZONTAL BAND
13	6	22115	RING SUPPORT INTERNAL GUSSET
14	4	S055335-39-106	CUSTOM LEG
15	4	S055335-39-107	CUSTOM LEG PAD
17	1	19977	ALL IN ONE WARNING DECAL
18	1	18128	HOLDER FOR MANUAL OMC-1
19	1	22376	SEGMENT 12' 3/8 X 5 X 142.5
20	2	23434	LIFTING LUG HD 1" x 6" x 12"
21	1	28162	LIQUID FLANGE
22	1	S055335-39-108	CUSTOM Ø22" TRIPLE LATCH MANHOLE WITH 8" PVH
23	1	S055335-39-109	YELLOW COVERPL. W 10" FL. & GUY WIRE BRKTS
25	2	20029	DECAL MMG BIN DECAL 70IN LG
26	1	S055335-39-111	HILLSIDE FILTER MOUNT FLANGE
27	1	S055335-39-112	HILLSIDE FILTER MOUNT STUB
29	1	S055335-39-120	DOOR ASSEMBLY
30	1	S055335-39-130	OSHA LADDER ASSY (SEE DWG FOR TAB LOC)
31	2	S055335-39-118	CUSTOM VIBRATOR MOUNT ASSEMBLY
32	1	S055335-39-119	LEG RING LIFT LUG W/ REPAD
33	1	S055335-39-137	4" ANSI FL W/ STUB & COVER (FOR BINDICATOR)
34	2	18853	1 1/2" NPT MILD STEEL FULL COUPLER
35	1	S055335-39-160	13" EXHAUST FAN MOUNT
36	1	S055335-39-161	18" AUGER THRU WINDOW
37	1	S055335-39-162	6" VENT STUB
38	1	S055335-39-163	AUGER WINDOW COVER
39	1	S055335-39-164	CUST. PERIM RAIL 12' W/ SELF CLOSING DOOR
40	1	S055335-39-140	FILL TUBE/AIR LINE ASSY
41	1	S055335-39-150	DISCHARGE ASSY (W/ SALINA GATE)
42	2	S055335-39-113	HILLSIDE FILTER MOUNT STIFFENER LONG
43	2	S055335-39-114	HILLSIDE FILTER MOUNT STIFFENER SHORT
44	1	S055335-39-134	HEATER MOUNT (RUFFNECK 10KWFX5, PURCHASED)
56	1		MILL CERT & DOC PKG
57	1		INCLUDE JIGGING FOR LOADING
58	1		ENGINEER STAMPED DRAWINGS (TBD)

		THIS DRAWING IS THE EXCLUSIVE PROPERTY OF MERIDIAN MANUFACTURING GROUP AND MAY NOT BE DUPLICATED BY ANY MEANS WITHOUT THE SPECIFIC PERMISSION FROM AN AUTHORITY OF MERIDIAN MANUFACTURING GROUP.	
DRAWN BY: PAW	DRAWN BY DATE: 2/16/2012	SHEET SIZE: B - SIZE	PROJECT NAME: PART NUMBER: 04141-56 Binass
CHECKED BY: 	CHECKED BY DATE: 	REVISION: A	PART DESCRIPTION: CUSTOM BIN ASSEMBLIES
1228-60-10 (C) S055335-39 CNRL CALGARY			PART/DRAWING NUMBER: S055335-39