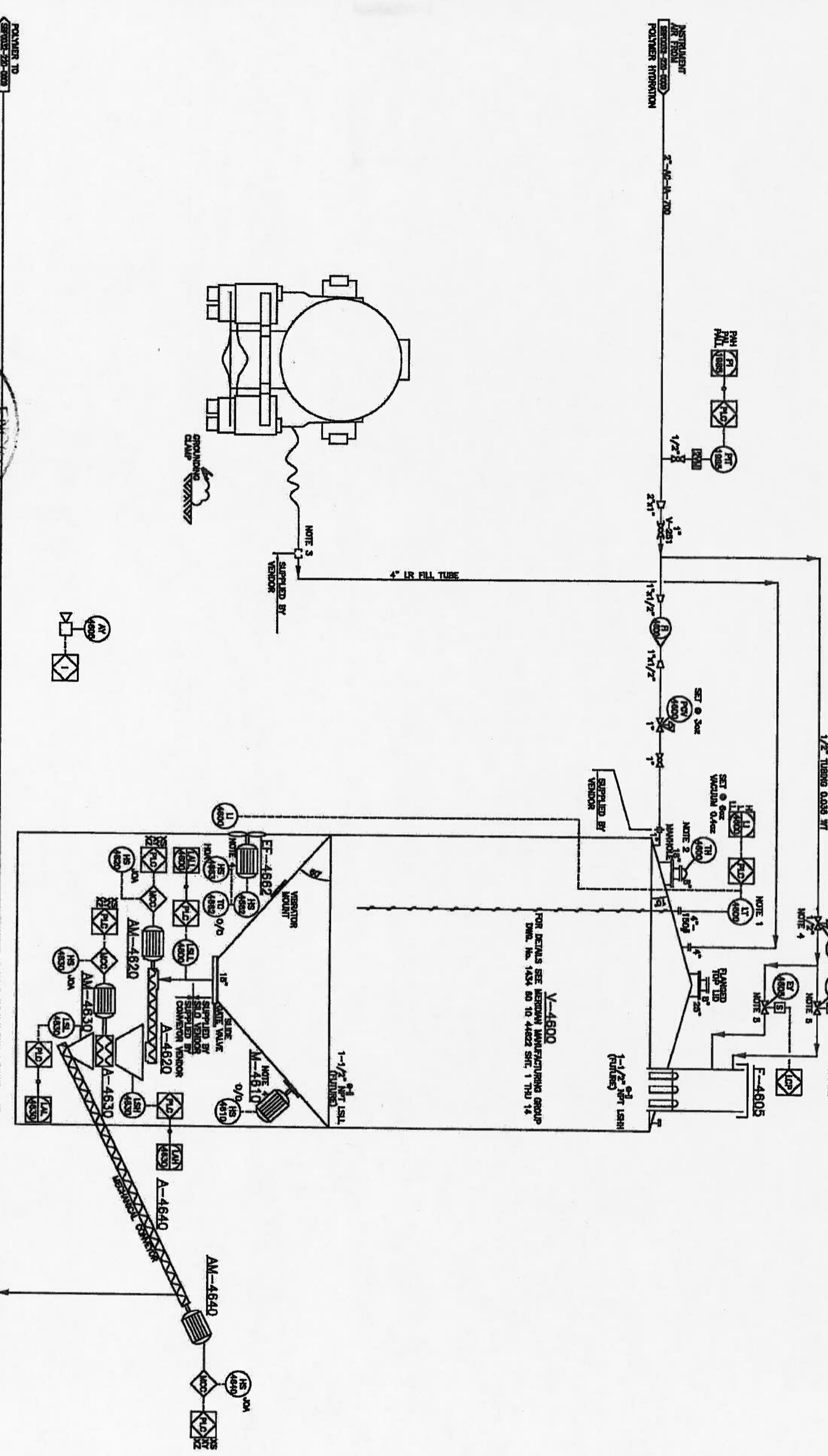


EF-4662	EXHAUST FAN	EXHAUST FAN W/ 1/2" DIA. 1/4" 60Hz
V-4600	POLYMER SILO	CAPACITY: 1000 (STY DRY POLYMER) SIZE: 12'0" x 25'0" (COLUMNS x HEIGHT) 44-8 3/16" (1818mm) TOTAL HEIGHT DESIGN PRESSURE: 150 PSI VENDOR: HERRMANN
M-4610	VIBRATOR MOTOR	W/ 2P, 200-1 PH, 60Hz
A-4620	HORIZONTAL SCREW FEEDER	W/ POLY WIRE HELIX DIA. 1.5" (38mm)
AM-4620	HORIZONTAL SCREW FEEDER MOTOR	HP: 450V, 3PH, 60Hz 1800 RPM
A-4630	LUMP BREAKER	W/ 1/2" DIA. 1/4" 60Hz MULTI SWALESS STEEL
AM-4630	LUMP BREAKER MOTOR	HP: 450V, 3PH, 60Hz 1800 RPM
E-4605	BIN VENT FILTER	W/ 6" DIA. 1/4" 60Hz 8 FILTER ELEMENTS
A-4640	POLYMER AUGER	W/ 7/8" DIA. 1/4" 60Hz SERIES 400 SS FLAT WIRE HELIX W/ 1/2" DIA. 1/4" 60Hz LENGTH: 30' (1072mm)
AM-4640	POLYMER AUGER MOTOR	HP: 720V, 200/230V/450V, 3PH, 60Hz 1800 RPM



NOTES:
 1. LIT TO HAVE REMOTE MOUNT INDICATOR.
 2. SUPPLIED BY SILO VENDOR.
 3. SUPPLIED BY SILO VENDOR WITH CAMLOCK AND CAP.
 4. SUPPLIED BY BIN VENT VENDOR.

DRAWING NO. HAS BEEN REVISED.
 PREVIOUS REVISIONS (A, B & C)
 WERE UNDER DWG. NO. 12801-3001
 DWG. NO. 12801-3001 IS VOID.

POLYMER TO
 (SERIES 200-000)
 NATUREL
 NATUREL

PERMIT TO PRACTICE
 6180 REGISTRATION NO. 114
 Signature: _____
 Date: _____
 PERMIT NUMBER: P 6405
 The Association of Professional Engineers,
 Geologists and Inspectors of Alberta

PROFESSIONAL ENGINEER
 ALBERTA

REV. 0 ISSUED FOR CONSTRUCTION

REV.	DESCRIPTION	ISSUED BY	DATE	CHK.	APP.	CLIENT
0	ISSUED FOR CONSTRUCTION	KOS	12-07-27	AM		

DESIGNED BY: _____ DATE: 12-08-04
 CHECKED BY: _____ DATE: _____
 APPROVED BY: _____ DATE: _____

Canadian Natural
 TITLE: SBP0032 N2 GENERATION & SILO INSTALLATION
 10-16-080-22W4
 POLYMER SILO
 PIPING & INSTRUMENTATION DIAGRAM

SCALE: N.T.S. JOB NO. 12801 DRAWING NO. SBP0032-220-0015 REV. 0