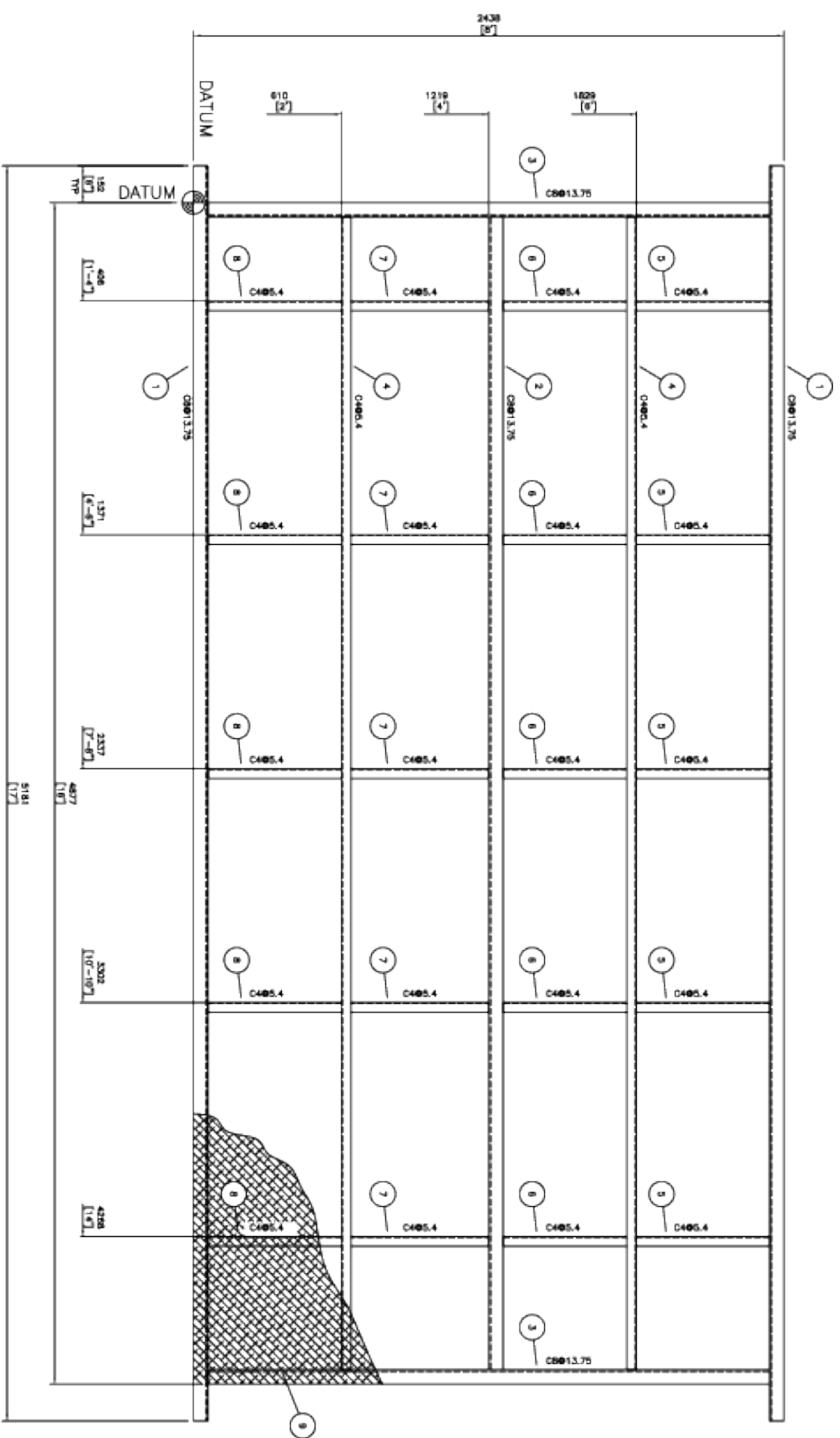
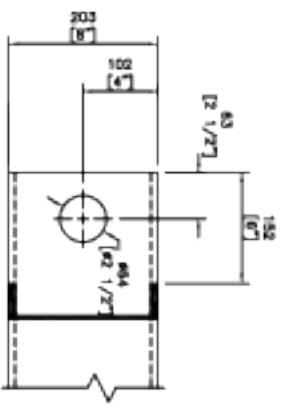


FABRICATION
NORTH



FOUR(4) SKIDS REQUIRED
15627-SKD-01
15630-SKD-01
15631-SKD-01
15632-SKD-01
BOM FOR ONE(1) SKID ONLY

ITEM	QTY	DESCRIPTION	UNIT
1	2	C6013.75 x 17'-0" Lg	SKD16-70M
2	1	C6013.75 x 15'-7 3/16" Lg	SKD16-70M
3	2	C6013.75 x 7'-7 3/16" Lg	SKD16-70M
4	2	C405.4 x 18'-7 3/16" Lg	SKD16-70M
5	2	C405.4 x 1'-9 1/2" Lg	SKD16-70M
6	5	C405.4 x 1'-11 3/8" Lg	SKD16-70M
7	5	C405.4 x 1'-10 7/16" Lg	SKD16-70M
8	5	C405.4 x 1'-9 1/2" Lg	SKD16-70M
9	128	SQUARE PILE 3/16" DIAMETER	SKD6



LEFT DETAIL
SCALE 1:3
SHIP CORN AS NECESSARY

- NOTES:
- SKID FRAMING SHALL BE OF SOLID WELDED CONSTRUCTION. FROM CONTIGUOUS FILLET WELDS. CORN ALL FRAMING MEMBERS AND ONE ANCHOR BEARING FLUSH ON BOTTOM OF SKID.
 - CHECKER MUST SEAL CONTIGUOUS WELDS ON TOP SKID.
 - SKID WELDS TO UNDERSIDE OF SKID, AS REQUIRED.
 - SURFACE PREP: SP-3.
 - FINISH: ONE SHOP COAT OF INDUSTRIAL ENAMEL.
 - DIMENSIONS: 240mm x 240mm (9'-0" x 17'-0") WIDTH: 1,175 mm (3,990 mm)

REV	DESCRIPTION	ISSUED FOR CONSTRUCTION	DATE	BY	CHECKED
0	GENERAL ARRANGEMENT - PLAN AND SECTION	15627-01-01	02/13/20	CMW	BO
0	PERMITS & INSTRUMENTATION DRAWING	15627-01-01	02/13/20	CMW	BO

ENGINEER'S STAMP



DESIGNED BY: CMW 02/13/20
 CHECKED BY: BO 02/13/20
 SCALE: 1:10
 CLIENT: ANADARKO CANADA CORPORATION
 CRANIE LAKE, NORTH
 16-18-14-23 W3M / 07-18-14-23 W3M
 10-18-14-23 W3M / 13-13-14-24 W3M
 TITLE: WELLPAD HEADER GENERAL ARRANGEMENT
 JOB NO.: 15627/30/31/32
 DRAWING NO.: 15627-SKD-01
 REV: 0