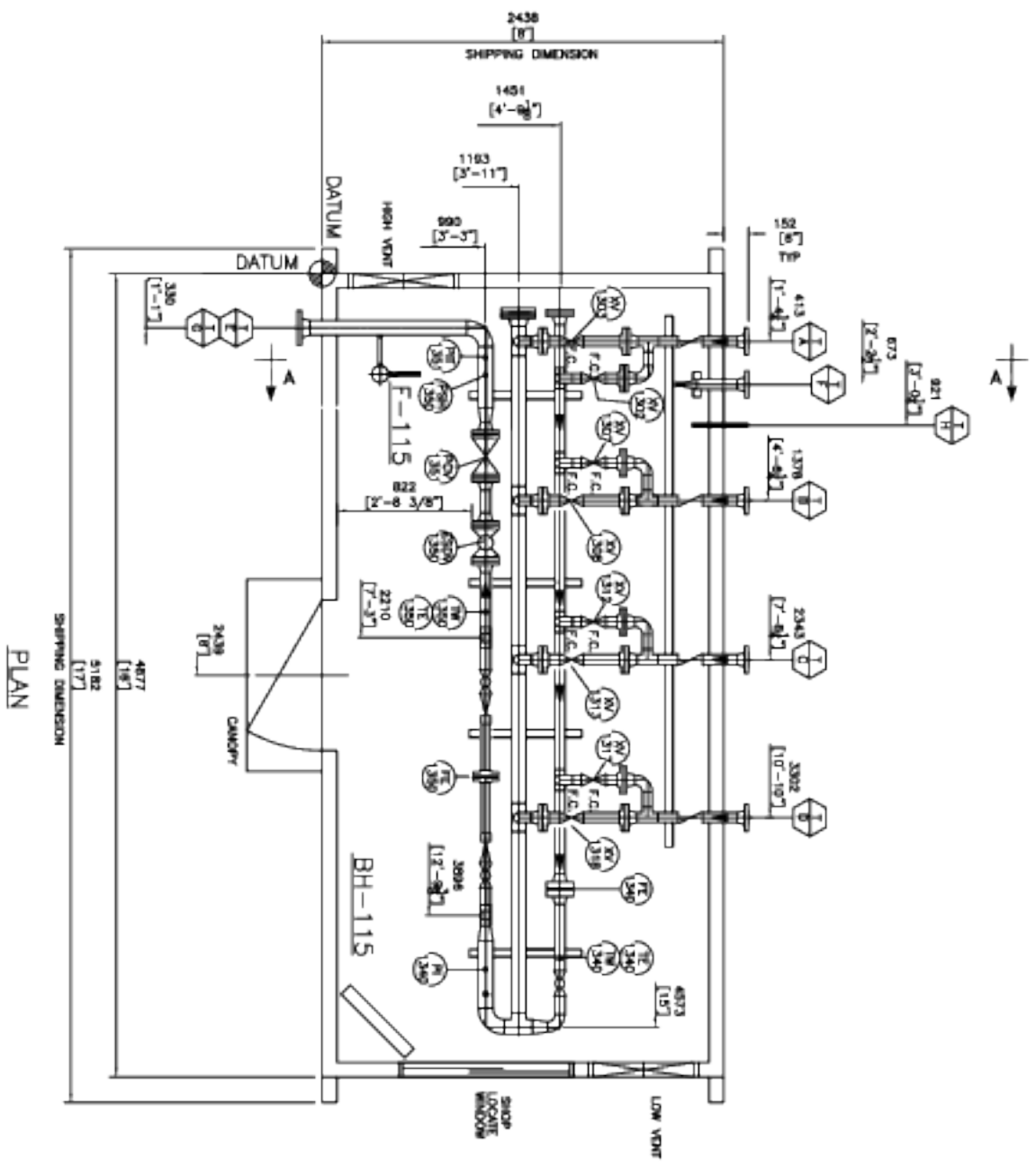
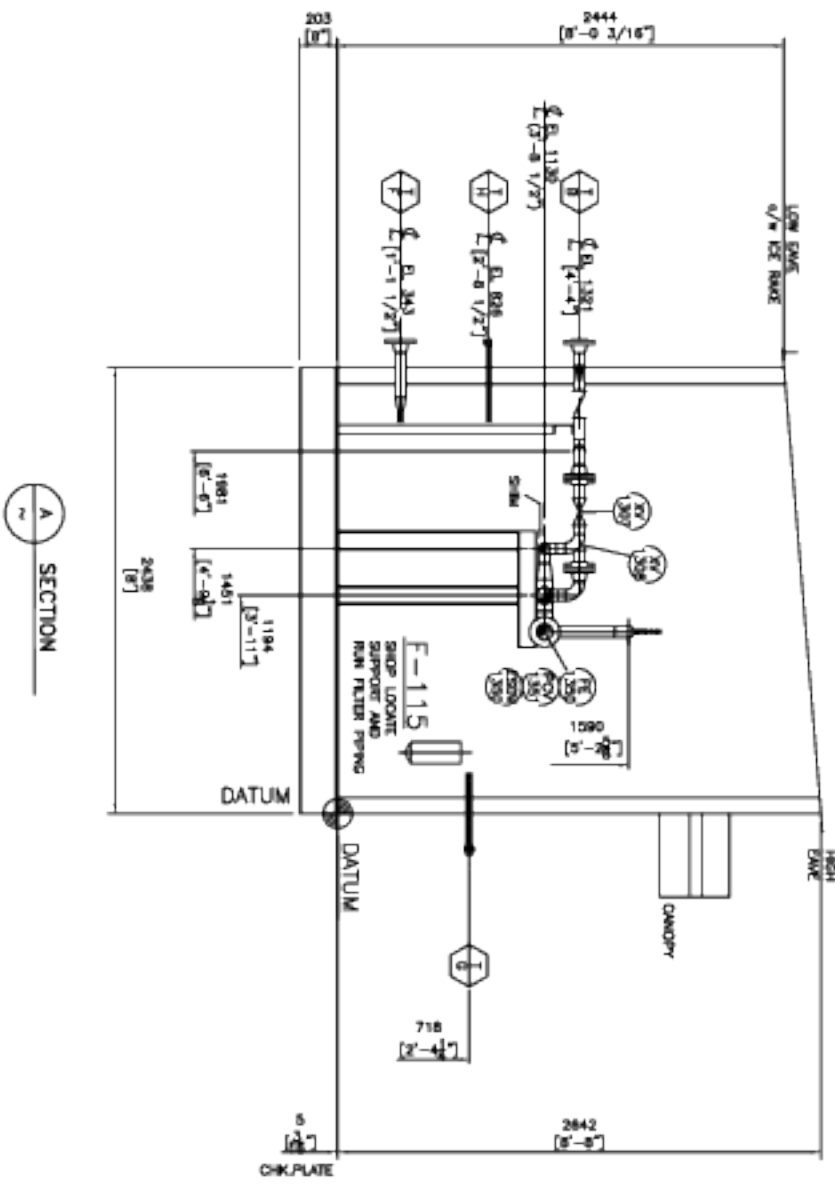


FABRICATION  
NORTH



PLAN



SECTION A-A

MARK	SIZE / SAVING	REVISION	SERVICE
1	2-3/4" SCH 40	11/8 (2'-8")	NLT
2	2-3/4" SCH 40	1/2" (4'-4")	NLT
3	2-3/4" SCH 40	11/8 (2'-8")	NLT
4	2-3/4" SCH 40	11/8 (2'-8")	NLT
5	2-3/4" SCH 40	11/8 (2'-8")	NLT
6	2-3/4" SCH 40	11/8 (2'-8")	NLT
7	2-3/4" SCH 40	11/8 (2'-8")	NLT
8	2-3/4" SCH 40	11/8 (2'-8")	NLT
9	2-3/4" SCH 40	11/8 (2'-8")	NLT
10	2-3/4" SCH 40	11/8 (2'-8")	NLT
11	2-3/4" SCH 40	11/8 (2'-8")	NLT
12	2-3/4" SCH 40	11/8 (2'-8")	NLT
13	2-3/4" SCH 40	11/8 (2'-8")	NLT
14	2-3/4" SCH 40	11/8 (2'-8")	NLT
15	2-3/4" SCH 40	11/8 (2'-8")	NLT
16	2-3/4" SCH 40	11/8 (2'-8")	NLT
17	2-3/4" SCH 40	11/8 (2'-8")	NLT
18	2-3/4" SCH 40	11/8 (2'-8")	NLT
19	2-3/4" SCH 40	11/8 (2'-8")	NLT
20	2-3/4" SCH 40	11/8 (2'-8")	NLT
21	2-3/4" SCH 40	11/8 (2'-8")	NLT
22	2-3/4" SCH 40	11/8 (2'-8")	NLT
23	2-3/4" SCH 40	11/8 (2'-8")	NLT
24	2-3/4" SCH 40	11/8 (2'-8")	NLT
25	2-3/4" SCH 40	11/8 (2'-8")	NLT
26	2-3/4" SCH 40	11/8 (2'-8")	NLT
27	2-3/4" SCH 40	11/8 (2'-8")	NLT
28	2-3/4" SCH 40	11/8 (2'-8")	NLT
29	2-3/4" SCH 40	11/8 (2'-8")	NLT
30	2-3/4" SCH 40	11/8 (2'-8")	NLT
31	2-3/4" SCH 40	11/8 (2'-8")	NLT
32	2-3/4" SCH 40	11/8 (2'-8")	NLT
33	2-3/4" SCH 40	11/8 (2'-8")	NLT
34	2-3/4" SCH 40	11/8 (2'-8")	NLT
35	2-3/4" SCH 40	11/8 (2'-8")	NLT
36	2-3/4" SCH 40	11/8 (2'-8")	NLT
37	2-3/4" SCH 40	11/8 (2'-8")	NLT
38	2-3/4" SCH 40	11/8 (2'-8")	NLT
39	2-3/4" SCH 40	11/8 (2'-8")	NLT
40	2-3/4" SCH 40	11/8 (2'-8")	NLT
41	2-3/4" SCH 40	11/8 (2'-8")	NLT
42	2-3/4" SCH 40	11/8 (2'-8")	NLT
43	2-3/4" SCH 40	11/8 (2'-8")	NLT
44	2-3/4" SCH 40	11/8 (2'-8")	NLT
45	2-3/4" SCH 40	11/8 (2'-8")	NLT
46	2-3/4" SCH 40	11/8 (2'-8")	NLT
47	2-3/4" SCH 40	11/8 (2'-8")	NLT
48	2-3/4" SCH 40	11/8 (2'-8")	NLT
49	2-3/4" SCH 40	11/8 (2'-8")	NLT
50	2-3/4" SCH 40	11/8 (2'-8")	NLT
51	2-3/4" SCH 40	11/8 (2'-8")	NLT
52	2-3/4" SCH 40	11/8 (2'-8")	NLT
53	2-3/4" SCH 40	11/8 (2'-8")	NLT
54	2-3/4" SCH 40	11/8 (2'-8")	NLT
55	2-3/4" SCH 40	11/8 (2'-8")	NLT
56	2-3/4" SCH 40	11/8 (2'-8")	NLT
57	2-3/4" SCH 40	11/8 (2'-8")	NLT
58	2-3/4" SCH 40	11/8 (2'-8")	NLT
59	2-3/4" SCH 40	11/8 (2'-8")	NLT
60	2-3/4" SCH 40	11/8 (2'-8")	NLT
61	2-3/4" SCH 40	11/8 (2'-8")	NLT
62	2-3/4" SCH 40	11/8 (2'-8")	NLT
63	2-3/4" SCH 40	11/8 (2'-8")	NLT
64	2-3/4" SCH 40	11/8 (2'-8")	NLT
65	2-3/4" SCH 40	11/8 (2'-8")	NLT
66	2-3/4" SCH 40	11/8 (2'-8")	NLT
67	2-3/4" SCH 40	11/8 (2'-8")	NLT
68	2-3/4" SCH 40	11/8 (2'-8")	NLT
69	2-3/4" SCH 40	11/8 (2'-8")	NLT
70	2-3/4" SCH 40	11/8 (2'-8")	NLT
71	2-3/4" SCH 40	11/8 (2'-8")	NLT
72	2-3/4" SCH 40	11/8 (2'-8")	NLT
73	2-3/4" SCH 40	11/8 (2'-8")	NLT
74	2-3/4" SCH 40	11/8 (2'-8")	NLT
75	2-3/4" SCH 40	11/8 (2'-8")	NLT
76	2-3/4" SCH 40	11/8 (2'-8")	NLT
77	2-3/4" SCH 40	11/8 (2'-8")	NLT
78	2-3/4" SCH 40	11/8 (2'-8")	NLT
79	2-3/4" SCH 40	11/8 (2'-8")	NLT
80	2-3/4" SCH 40	11/8 (2'-8")	NLT
81	2-3/4" SCH 40	11/8 (2'-8")	NLT
82	2-3/4" SCH 40	11/8 (2'-8")	NLT
83	2-3/4" SCH 40	11/8 (2'-8")	NLT
84	2-3/4" SCH 40	11/8 (2'-8")	NLT
85	2-3/4" SCH 40	11/8 (2'-8")	NLT
86	2-3/4" SCH 40	11/8 (2'-8")	NLT
87	2-3/4" SCH 40	11/8 (2'-8")	NLT
88	2-3/4" SCH 40	11/8 (2'-8")	NLT
89	2-3/4" SCH 40	11/8 (2'-8")	NLT
90	2-3/4" SCH 40	11/8 (2'-8")	NLT
91	2-3/4" SCH 40	11/8 (2'-8")	NLT
92	2-3/4" SCH 40	11/8 (2'-8")	NLT
93	2-3/4" SCH 40	11/8 (2'-8")	NLT
94	2-3/4" SCH 40	11/8 (2'-8")	NLT
95	2-3/4" SCH 40	11/8 (2'-8")	NLT
96	2-3/4" SCH 40	11/8 (2'-8")	NLT
97	2-3/4" SCH 40	11/8 (2'-8")	NLT
98	2-3/4" SCH 40	11/8 (2'-8")	NLT
99	2-3/4" SCH 40	11/8 (2'-8")	NLT
100	2-3/4" SCH 40	11/8 (2'-8")	NLT

NO.	DESCRIPTION	DATE	BY	CHK	APP
0	ISSUED FOR CONSTRUCTION	06/07/05	JB	SS	
0	REFERENCE DRAWINGS				
15627-PO-01	PIPING & INSTRUMENTATION DIAGRAM				
15627-SNO-01	STRUCTURAL STEEL				

ENGINEER'S STAMP	DESIGNED BY	DATE	CHECKED BY	DATE	SCALE
	JB	06/13/05	SO	06/13/05	1:30

CLIENT	TITLE	DWG NO.	DRAWING NO.	REV
ANADARKO CANADA CORPORATION CRANE LAKE, NORTH 16-19-14-23 W3M	WELLPAD HEADER GENERAL ARRANGEMENT	15627	15627-GA-01	0

**PLATINUM**  
Energy Services Corp.  
CALGARY, ALBERTA