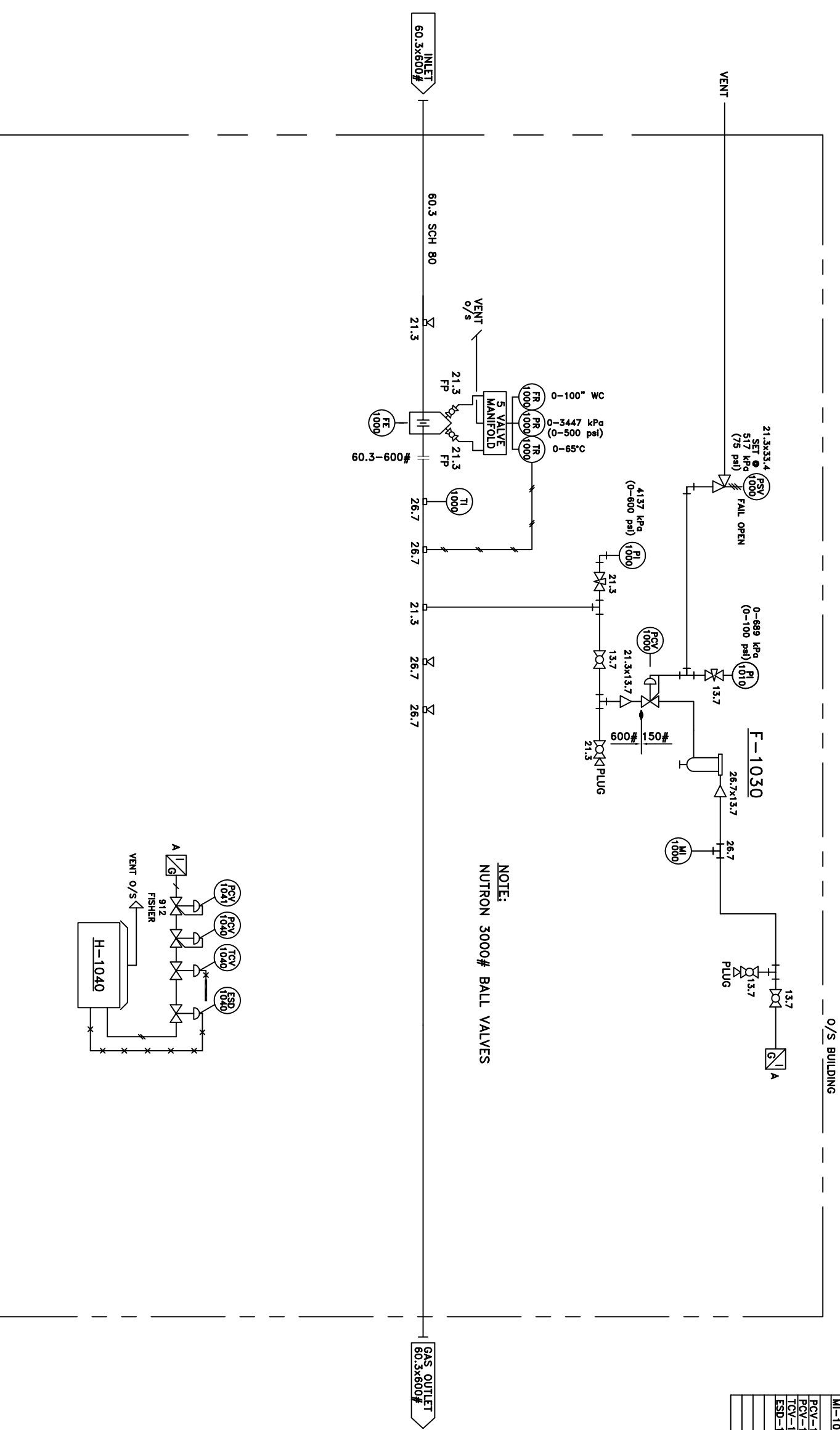


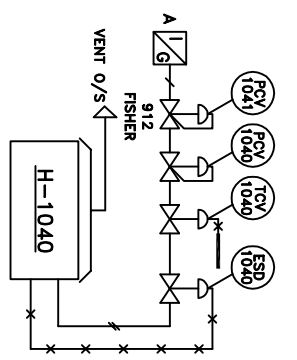
F-1030
FUEL GAS DRYER
 ELO-DRI c/w DESSICANT BEADS
 MODEL# G-10A-1/4E
 MAWP: 150
 CARTRIDGE: 10

FE-1000
METER RUN
 CANALTA
 SERIAL#: COMMON - SCH 80
 CONNECTIONS: 60.3x600 ANSI FLANGED
 SENIOR METER RUN - AGA FIG 2000
 86" (2184mm) END TO END

H-1040
HEATER
 CISCAN
 12"x24"(305mmx610mm)-8,000 Btu/hr
 w/ CABLE, GRILL, HOOD, AND VENT
 SIDE MOUNT CONTROLS
 SERIAL #: COMMON



NOTE:
 NUTRON 3000# BALL VALVES




NOTE
 - PIPE - A106 GR. B SCH 80 (UNLESS OTHERWISE STATED)
 - FLANGES - A105, SCH 80
 - FITTINGS - NPT 234 WPB
 - THREADED FITTINGS - 3000# RATING
 - THREADED NIPPLES - SCH 160
 - TUBING - 21.3 304 SST WELDED .049 WALL
 - TUBING - 17.1 304 SST WELDED .035 WALL
 - TUBING FITTINGS - SWAGelok - CARBON
 - 24" (610mm)WIDE x 72" (1829mm)LONG x 5' (1524mm)HIGH BUILDING

- 24" (610mm)WIDE x 72" (1829mm)LONG x 5' (1524mm)HIGH BUILDING
 - 12"x12" VENT WITH SLIDER
 - 12"x24" HEATER - SIDE MOUNT CONTROLS

TAG. No.	MAKE	MATERIAL	DESCRIPTION
PI-1000	WIKA or EQUAL		13.7 PRESSURE GAUGE - 0-4137 kPa (0 TO 600 psid)
PSV-1000	KINGS		21.3x33.4 FUEL GAS RELIEF - SET@517 kPa (75 psid)
FR-1000	ITT BARTON		MODEL:19110-LC-2-MT-GS - 110 ORIFICE
PR-1000	ITT BARTON		FLOW RECORDER - S#: COMMON
TR-1000	ITT BARTON		PRESSURE RECORDER
TI-1000	GAUGETECH		TEMPERATURE RECORDER
PCV-1000	FISHER 1301F		TEMPERATURE GAUGE
PI-1010	FISHER 1301F		FUEL GAS REGULATOR - INPUT 41369 kPa (6000 psid)
PI-1000	WIKA or EQUAL		OUTPUT - 517 kPa (75 psid)
MI-1000	WIKA or EQUAL		13.7 PRESSURE GAUGE - 0-689 kPa (0 TO 100 psid)
PCV-1040	MAXITROL		MOISTURE INDICATOR
PCV-1041	FISHER		APPLIANCE REG.
TCV-1040	CISCAN		HEATER REGULATOR - MODEL 912
ESD-1040	BASO		HEATER THERMOSTAT
			CISCAN HEATER E.S.D.
			NUTRON 3000 PSI
			NEEDLE VALVES
			CENTURY or EQUAL

DATE	BY	REVISION
05/07/06	Z	AS BUILT
05/05/06	A	GENERAL REVISIONS AS PER INSPECTOR
05/04/06	A	ISSUED FOR CONSTRUCTION
05/01/06	A	ISSUED FOR REVIEW PURPOSES AS PER QUOTE #S-5-048



STETTLER OIL & GAS
 PHONE:(403) 742-6666
 BOX 652, STETTLER, AB T0C 2L0

CLIENT
denon
 LSD: 13-15-38-18 V/4
 METER RUN SKID
 60.3x600# ANSI
 PIPING & INSTRUMENTATION DIAGRAM

DATE: 2005-04-01	PROJECT NO: 5-240
SCALE: N/D/N/E	DRAWING NO: 5-240-2PR-4-01
DESIGNED BY: CRJ	SHEET: 1 of 2
CHECKED BY: JB	