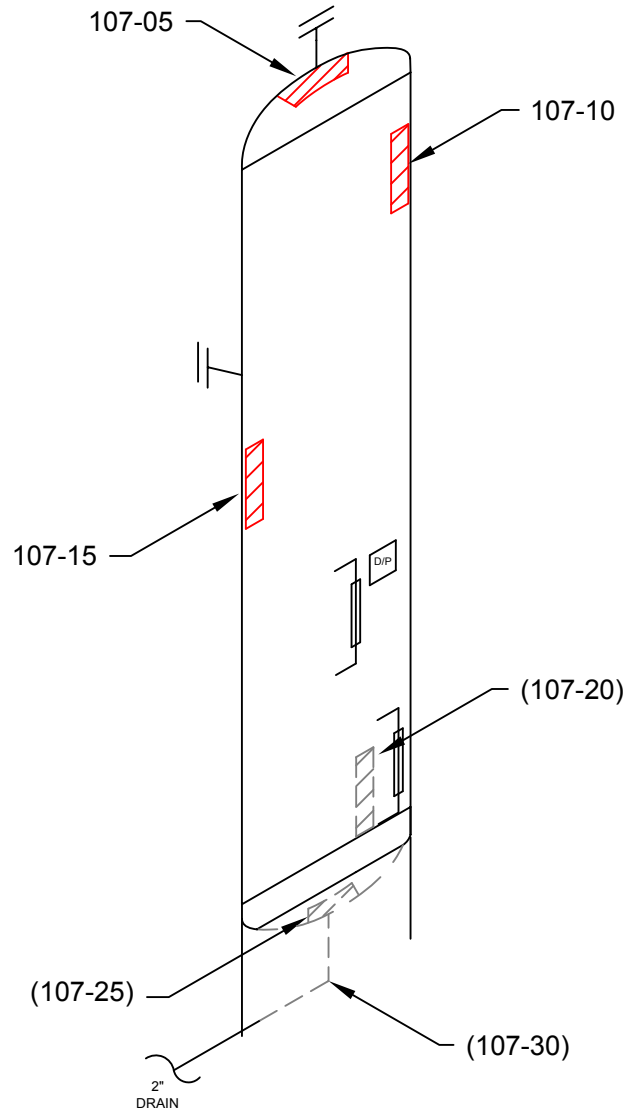


ITEM:

SEPARATOR

A 0475023



COMMENTS:

PROJECT:
C70099



STETTLER, AB (403) 742-4868
LACOMBE, AB (403) 782-7855
BROOKS, AB (403) 501-8029
GRANDE PRAIRIE, AB (866) 422-9732

TECHNICIAN:

STEVE GILLINGHAM
SNT LEVEL II
CGSB 48.9712
LEVEL II # 11441

DATE: **01/30/11**

DWG # **107**

CLIENT: **CNRL**

LSD: **02-03-075-11-W6M**

INSPECTOR : RAJ KHAN

LOCATION : VALHALLA

DISTRICT UNIT : WEST COUNTY

BLDG/SKID : SKD 0223

PROCESS : SOUR

CODE : ASME SEC VIII DIV 1

SPECIFICATION : AS PER ASME SE 797

TECHNIQUE : UT 1-1, REV .1

METHOD : UT CONTINUOUS / A SCAN

SURFACE COND : PAINTED

SURFACE TEMP : AMBIENT

VESSEL INFORMATION

VESSEL # : **A 0475023**

CRN # : P4241.2

SERIAL # : 011045-001

MANUFACTURER : BS&B

DATE BUILT : 2001

CLIENT ID / TAG : -

M.A.W.P. : 1440 PSI

M.A.W.T. : 130 °F

JOINT EFFICIENCY/RT : RT 1

STRESS RELIEVED : YES

INSULATED : NO

MANWAY : NO

VESSEL SPECIFICATIONS

	OD	NOMINAL	MATERIAL	CA
VESSEL HEAD	24"	1.04"	SA-516-70	.125"
VESSEL SHELL	24"	1.00"	SA-516-70	.125"
BOOT HEAD	-	-	-	-
BOOT SHELL	-	-	-	-



ULTRASONIC CORROSION SURVEY

Survey Name: CNRL

LSD: 02-03-075-11W6	Dwg: 107	Vessel Number: A0475023	Manufacturer: BS&B	Survey Date: 1/31/11
District Unit: WEST COUNTY		Vessel Name: SEPARATOR	Serial Number: 011045-001	Inspector: RAJ KHAN
Location: VALHALLA		Year Built: 2001	Shell MAWP PSI: 1440 MAWT F: 130	Process: SOUR
Skid: SKD0223		Tag Number: -	Tube MAWP PSI: 0 MAWT F: 0	Project #: C70099
		CRN: P4241.2	Vessel CA: 0.1250	

Band	Description		Readings						Year	Avg Inches	Min Inches	Nominal	CA	TMIN	Recommended Next Inspection	Recommended Retirement Date	
			1	2	3	4	5	6									
107-05	Top	Head	Baseline	1.131	1.128	1.126	1.125	1.129	1.119	2006	1.126	1.119	1.0400	0.1250	0.7948	2012	2031
Shape	Ellipsoidal	Shell Side	Previous	1.131	1.128	1.126	1.125	1.129	1.119	2006	1.126	1.119	Comments-->				
OD	24		Current	1.131	1.128	1.126	1.125	1.125	1.118	2011	1.126	1.118					
Spec.	VIII Div 1									ST Loss MPY	0.000	OK					
Material	SA 516 - 70									LT Loss MPY	0.000						
107-10	Upper	Shell	Baseline	1.028	1.027	1.027	1.026	1.024	1.024	2006	1.026	1.024	1.0000	0.1250	0.8278	2012	2031
Shape	Cylindrical	Shell Side	Previous	1.028	1.027	1.027	1.026	1.024	1.024	2006	1.026	1.024	Comments-->				
OD	24		Current	1.028	1.027	1.027	1.026	1.024	1.024	2011	1.026	1.024					
Spec.	VIII Div 1									ST Loss MPY	0.000	OK					
Material	SA 516 - 70									LT Loss MPY	0.000						
107-15	Mid	Shell	Baseline	1.021	1.021	1.019	1.020	1.017	1.019	2006	1.020	1.017	1.0000	0.1250	0.8278	2012	2031
Shape	Cylindrical	Shell Side	Previous	1.021	1.021	1.019	1.020	1.017	1.019	2006	1.020	1.017	Comments-->				
OD	24		Current	1.021	1.021	1.019	1.020	1.017	1.019	2011	1.020	1.017					
Spec.	VIII Div 1									ST Loss MPY	0.000	OK					
Material	SA 516 - 70									LT Loss MPY	0.000						
107-20	Lower	Shell	Baseline	1.013	1.013	1.011	1.013	1.012	1.006	2006	1.011	1.006	1.0000	0.1250	0.8278	2012	2031
Shape	Cylindrical	Shell Side	Previous	1.013	1.013	1.011	1.013	1.012	1.006	2006	1.011	1.006	Comments-->				
OD	24		Current	1.013	1.013	1.011	1.012	1.012	1.006	2011	1.011	1.006					
Spec.	VIII Div 1									ST Loss MPY	0.000	OK					
Material	SA 516 - 70									LT Loss MPY	0.000						



ULTRASONIC CORROSION SURVEY

Survey Name: CNRL

LSD: 02-03-075-11W6	Dwg: 107	Vessel Number: A0475023	Manufacturer: BS&B	Survey Date: 1/31/11
District Unit: WEST COUNTY		Vessel Name: SEPARATOR	Serial Number: 011045-001	Inspector: RAJ KHAN
Location: VALHALLA		Year Built: 2001	Shell MAWP PSI: 1440 MAWT F: 130	Process: SOUR
Skid: SKD0223		Tag Number: -	Tube MAWP PSI: 0 MAWT F: 0	Project #: C70099
		CRN: P4241.2	Vessel CA: 0.1250	

Band	Description		Readings						Year	Avg Inches	Min Inches	Nominal	CA	TMIN	Recommended Next Inspection	Recommended Retirement Date	
			1	2	3	4	5	6									
107-25	Bottom	Head	Baseline	1.126	1.130	1.123	1.125	1.129	1.121	2006	1.126	1.121	1.0400	0.1250	0.7948	2012	2031
Shape	Ellipsoidal	Shell Side	Previous	1.126	1.130	1.123	1.125	1.129	1.121	2006	1.126	1.121	Comments-->				
OD	24		Current	1.125	1.126	1.123	1.125	1.129	1.120	2011	1.125	1.120					
Spec.	VIII Div 1									ST Loss MPY	0.000	OK					
Material	SA 516 - 70									LT Loss MPY	0.000						
107-30	Drain	Nozzle	Baseline	0.335	0.353	0.330	0.314	0.314	0.329	2006	0.329	0.314	0.3430	0.1250	0.0749	2012	2031
Shape	90° Elbow	Shell Side	Previous	0.335	0.353	0.330	0.314	0.314	0.329	2006	0.329	0.314	Comments-->				
OD	2.375		Current	0.335	0.348	0.330	0.314	0.314	0.329	2011	0.328	0.314					
Spec.	VIII Div 1									ST Loss MPY	0.000	OK					
Material	SA 234 - WPB									LT Loss MPY	0.000						
107-35		Piping	Baseline	0.278	0.277	0.276	0.279	0.283	0.284	2006	0.280	0.276	0.3000	0.0375	0.1216	2012	2031
Shape	45° Elbow	Shell Side	Previous	0.278	0.277	0.276	0.279	0.283	0.284	2006	0.280	0.276	Comments-->				
OD	3.5		Current	0.278	0.277	0.276	0.279	0.283	0.284	2011	0.280	0.276					
Spec.	B31.3									ST Loss MPY	0.000	OK					
Material	A 234 - WPB									LT Loss MPY	0.000						
107-40		Piping	Baseline	0.297	0.295	0.294	0.290	0.290	0.289	2006	0.293	0.289	0.3000	0.0375	0.1216	2012	2031
Shape	90° Elbow	Shell Side	Previous	0.297	0.295	0.294	0.290	0.290	0.289	2006	0.293	0.289	Comments-->				
OD	3.5		Current	0.295	0.295	0.293	0.290	0.290	0.289	2011	0.292	0.289					
Spec.	B31.3									ST Loss MPY	0.000	OK					
Material	A 234 - WPB									LT Loss MPY	0.000						



ULTRASONIC CORROSION SURVEY

Survey Name: CNRL

LSD: 02-03-075-11W6	Dwg: 107	Vessel Number: A0475023	Manufacturer: BS&B	Survey Date: 1/31/11
District Unit: WEST COUNTY		Vessel Name: SEPARATOR	Serial Number: 011045-001	Inspector: RAJ KHAN
Location: VALHALLA		Year Built: 2001	Shell MAWP PSI: 1440 MAWT F: 130	Process: SOUR
Skid: SKD0223		Tag Number: -	Tube MAWP PSI: 0 MAWT F: 0	Project #: C70099
		CRN: P4241.2	Vessel CA: 0.1250	

Band	Description		Readings						Year	Avg Inches	Min Inches	Nominal	CA	TMIN	Recommended Next Inspection	Recommended Retirement Date
			1	2	3	4	5	6								
107-45	Piping	Baseline	0.284	0.278	0.278	0.283	0.282	0.281	2006	0.281	0.278	0.3000	0.0375	0.1216	2012	2031
Shape	90° Elbow	Shell Side	Previous	0.284	0.278	0.278	0.283	0.282	0.281	2006	0.281	0.278	Comments-->			
OD	3.5		Current	0.279	0.278	0.278	0.283	0.282	0.281	2011	0.280	0.278				
Spec.	B31.3			ST Loss MPY						0.000	OK					
Material	A 234 - WPB			LT Loss MPY						0.000						
107-50		Baseline	0.291	0.284	0.283	0.280	0.280	0.280	2006	0.283	0.280	0.3000	0.1625	0.1091	2012	2031
Shape	90° Elbow	Shell Side	Previous	0.291	0.284	0.283	0.280	0.280	0.280	2006	0.283	0.280	Comments-->			
OD	3.5		Current	0.291	0.282	0.282	0.275	0.280	0.280	2011	0.282	0.275				
Spec.	B31.3			ST Loss MPY						0.001	OK					
Material	A 234 - WPB			LT Loss MPY						0.001						