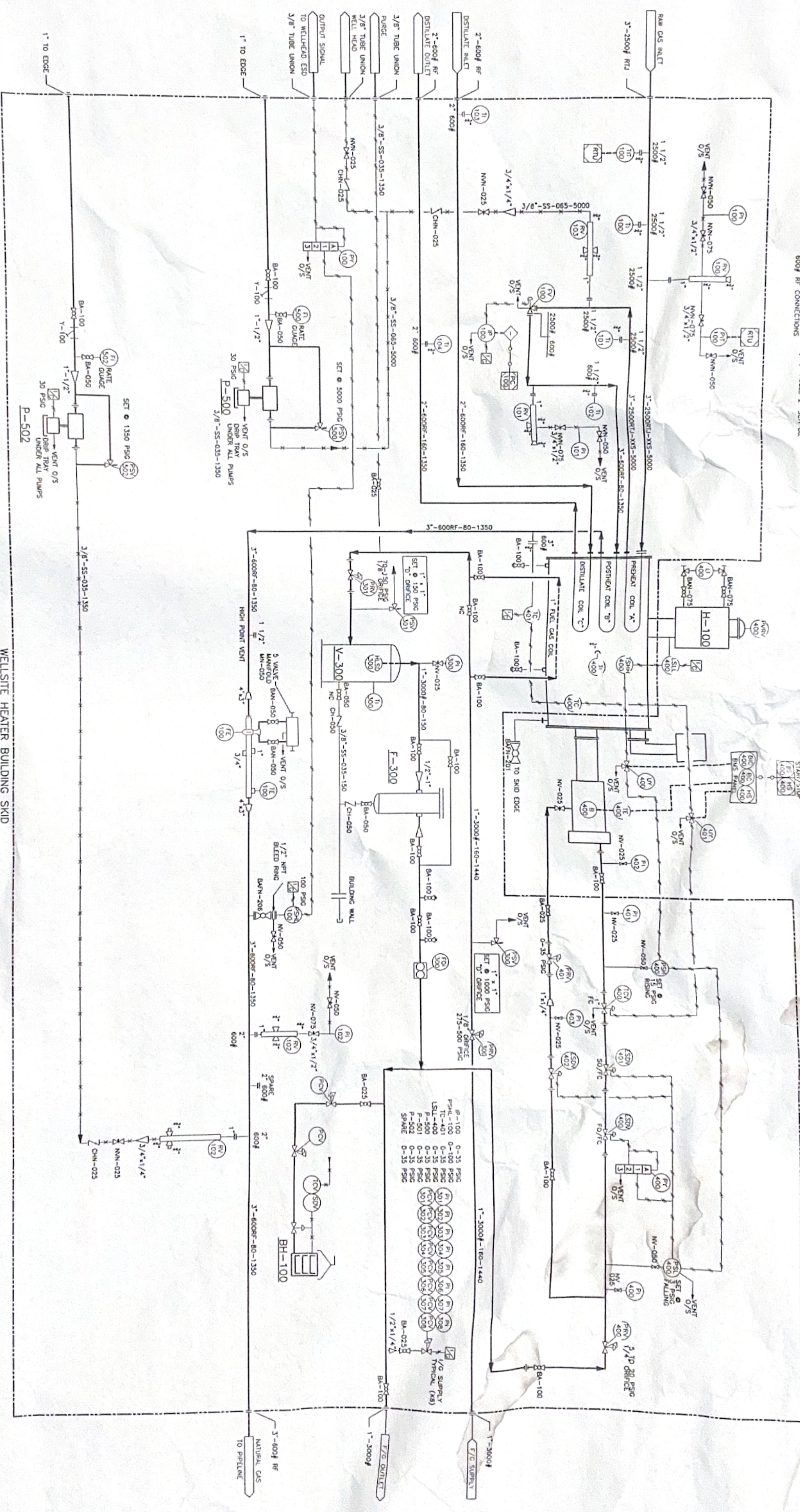


THIS DRAWING IS THE PROPERTY OF COMPLETE PACKAGE TECHNOLOGY (2000) LTD. ANY REPRODUCTION IN WHOLE OR PART WITHOUT EXPRESS PERMISSION IS PROHIBITED



H-100
 1.75 MW RTU/HR LINEHEATER
 SHELL 34" O.D. x 20'-0" 5/8"
 24" O.D. x 6'-0" 5/8"
 2500# RT CONNECTIONS
 REHEAT COIL SIX (6) PASSES OF 3" SCH 80
 600# RT CONNECTION TEN (10) PASSES 2" SCH 80
 600# RT CONNECTIONS

BH-100
 1000 GALLON MODEL 14124
 1000 GALLON MODEL 14124
 12 VOC STRIPPING ELEMENT
 1/2" COLLECTOR ELEMENT
 PROTECTIVE SHELL AND VENT 10000

V-300
 1000 GALLON SCHEIBER (SHEIB)
 MODEL 310
 285 PSIG @ 100%
 1/16" RT-3 (SLOT) x 4H

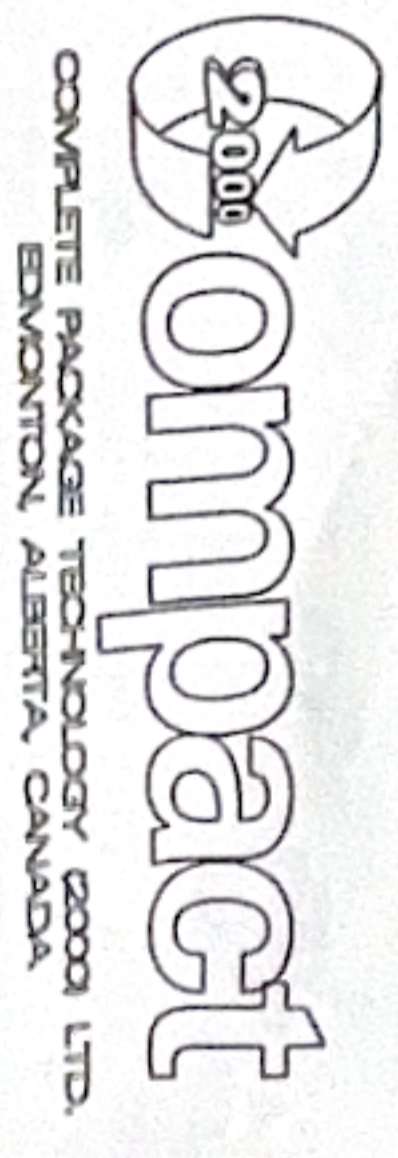
F-300
 HEADLINE CONDENSING FILTER
 MODEL 310
 285 PSIG @ 100%
 1/2" COLLECTOR ELEMENT

P-500/502
 METROLUX / COMBOSUN INHIBITOR PUMPS
 LING B41-11-51-4
 18.3 US GALLONS/DAY CAPACITY
 4.370 PSIG OPERATING PRESSURE
 1/4" GORHAM PLUNGER

EI-500/502
 CHEMICAL LEVEL RATE GAUGE
 1/2" NPT CONNECTIONS

WELLSITE HEATER BUILDING SKID

NO.	DATE	REVISION	DRAWN	CHECK	APP.
A	02/06/23	ISSUED FOR APPROVAL	TR	RC	
0	01/08/01	ISSUED FOR CONSTRUCTION	TR	RC	



CLIENT	PROJECT	SCALE	DWG. NO.	REV.
DEVON CANADA LTD c/o TO ENGINEERING LTD	ELMORTH FIELD DEVELOPMENT LINEHEATER PACKAGE PAID	N.T.S.	03-6844	0

MATERIAL SHOWN FOR ONE (1) UNIT ONLY - THREE (3) UNITS REQUIRED