

**V-110**  
INLET SEPARATOR

Size: 305mm O.D. x 1,219mm S/S  
(12" x 48" S/S)  
Model: 41030-M0BD  
MAWP: 285 PSI @ 100°F

**V-140**  
INLET GAS FILTER

Size: 508mm O.D. x 635mm S/S  
(20" x 25" S/S)  
Model: 41030-M0BD  
MAWP: 180 PSI

**V-150**  
OIL COALESCING VESSEL

Size: 508mm O.D. x 635mm S/S  
(20" x 25" S/S)  
Model: 41030-M0BD  
MAWP: 360psi @ 250°F

**V-160**  
FUEL SCRUBBER

Size: 102mm O.D. x 914mm S/S  
(4" x 36" S/S)

**V-180**  
FLOAT CHAMBER

**S-210**  
SCREW COMPRESSOR

Manufacturer: GARDNER DENVER  
Model: SSM  
C/W INLET CHECK

**M-310**  
NATURAL GAS ENGINE

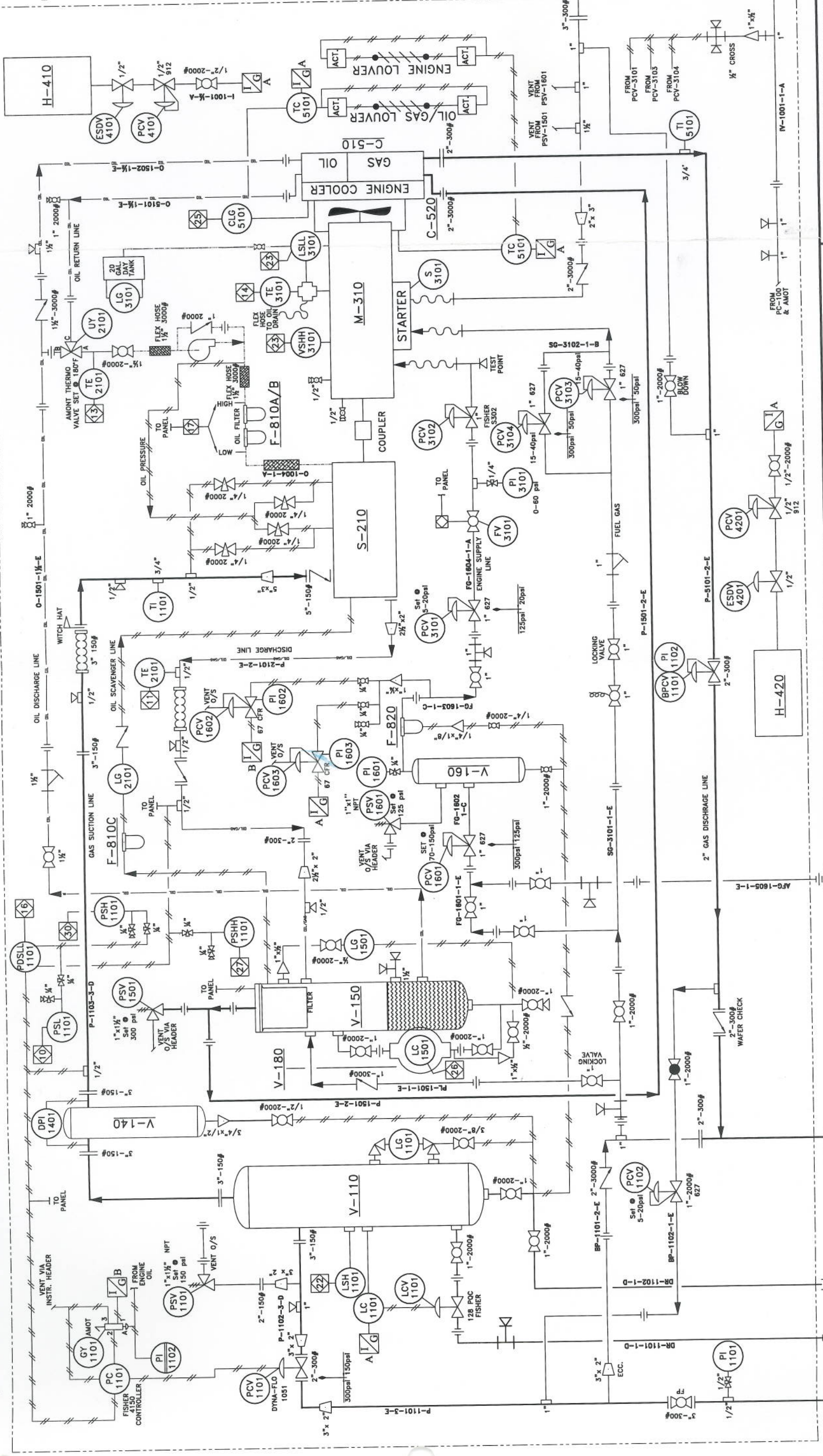
CAT IN LINE, 4 CYL  
3304, I/A  
95 HP

**H-410/420**  
HEATER

Size: 305mm x 609mm  
(12" x 24")  
Model: CIS-CAN

**C-510**  
OIL/GAS COOLER

Model: Accc 1600



LINE SPEC.

A	= 20psi
B	= 50psi
C	= 125psi
D	= 150psi
E	= 300psi

LINE TYPE LEGEND

---	MAIN PROCESS GAS	---	UTILITY PROCESS
---	SECONDARY PROCESS	---	OIL/GAS COMBINED
---	INSTRUMENTATION	---	OIL ONLY LINE
---	SKID BOUNDARY	---	

**Jiro**  
5221-46 St.  
Box 1450, Stettler Alberta  
an EnSource company

JIRO COMPRESSION LTD.  
BURLINGTON RESOURCES

DATE: / / SCALE: JOB NO.: 35129  
DRAWING NO.: REV.:

**3500 SERIES COMPRESSOR**  
SSM SCREW, 3304 CAT MOTOR  
TRAILER MOUNTED, SWEET