

BILL OF MATERIAL

ITEM	QTY	EFX CODE	DESCRIPTION
2	1	104967	COOLER, LUBE OIL [THERMAL TRANSFER, EK-712-0]
4	1	107969	CONTROLLER, OIL LEVEL C/W ELECTRIC SWITCH, XP, CSA C/W BRACKET [KENCO, KLCE-9]
5	1	110142	VALVE, NEEDLE, OIL SAMPLE, 1/4" FNPT, BRASS [NUPRO, B-4JN4]
6	1	102973	VALVE, BALL, 3/4" NPT, 2000# WOG, RP, 316SS, NACE C/W [NAVCO, C1-R07S20A]
8	1	116178	SWITCHGAUGE, PRESSURE, PM, 2-1/2" DIAL, 0-100 PSI, 1/4" NPT [MURPHY, A25PEF100]
13	1	107479	PUMP, DIAPHRAGM, 1" NPT, ALUMINUM, BUNA.#02-10007 [WILDEN, T2/AAAB/BN/BN/ABN247]
60	1	107910B	T-COUPLE, K TYPE, 316SS, 7.5" [THERMOKINETICS, K125-316S0007.5B82X000-004B-99]
61	1	105167	THERMOWELL, 316SS, BTB STYLE 6, 1/2" X 1/2" NPTM, U=2.5", .260" BORE
		
			BILL OF MATERIAL: W 050659-29 : Compressor Oil System
			DATE-TIME EXPORTED: 2005-07-05-09.21

AS-BUILT
DATE DEC 14 2005

FRAME	JGA/4
FRAME CRANKCASE VOLUME	38 L
OIL FLOWRATE	30 L/min.
CONNECTION "A"	1" NPT
PIPE "B"	1" HOSE
PIPE "C"	1" HOSE
CONNECTION "D"	1" NPT

NOTES:
> 4-THROW COMPRESSOR FRAME HAS TWO DIVIDER BLOCKS, LOCATED NEAR CENTERLINE OF FRAME.

REV	DESCRIPTION	DATE	DRAWN BY	CHECKED BY
2	AS BUILT	05/10/19	MGN	CT
1	ISSUE FOR CONSTRUCTION	05/07/19	MGN	CT
0	ISSUE FOR APPROVAL	05/07/05	MGN	CT

EFX Compression
ENERFLEX

4700 47 Street SE Calgary AB Canada T2B 3R1 Canada Tel. +1.403.236.6800 Fax +1.403.279.0367
www.enerflex.com

TITLE: SERVICE FLOW
COMPRESSOR OIL SYSTEM
ARIEL JGA/4

FOR: DEVON CANADA CORP.
(NARRAWAY, AB.)

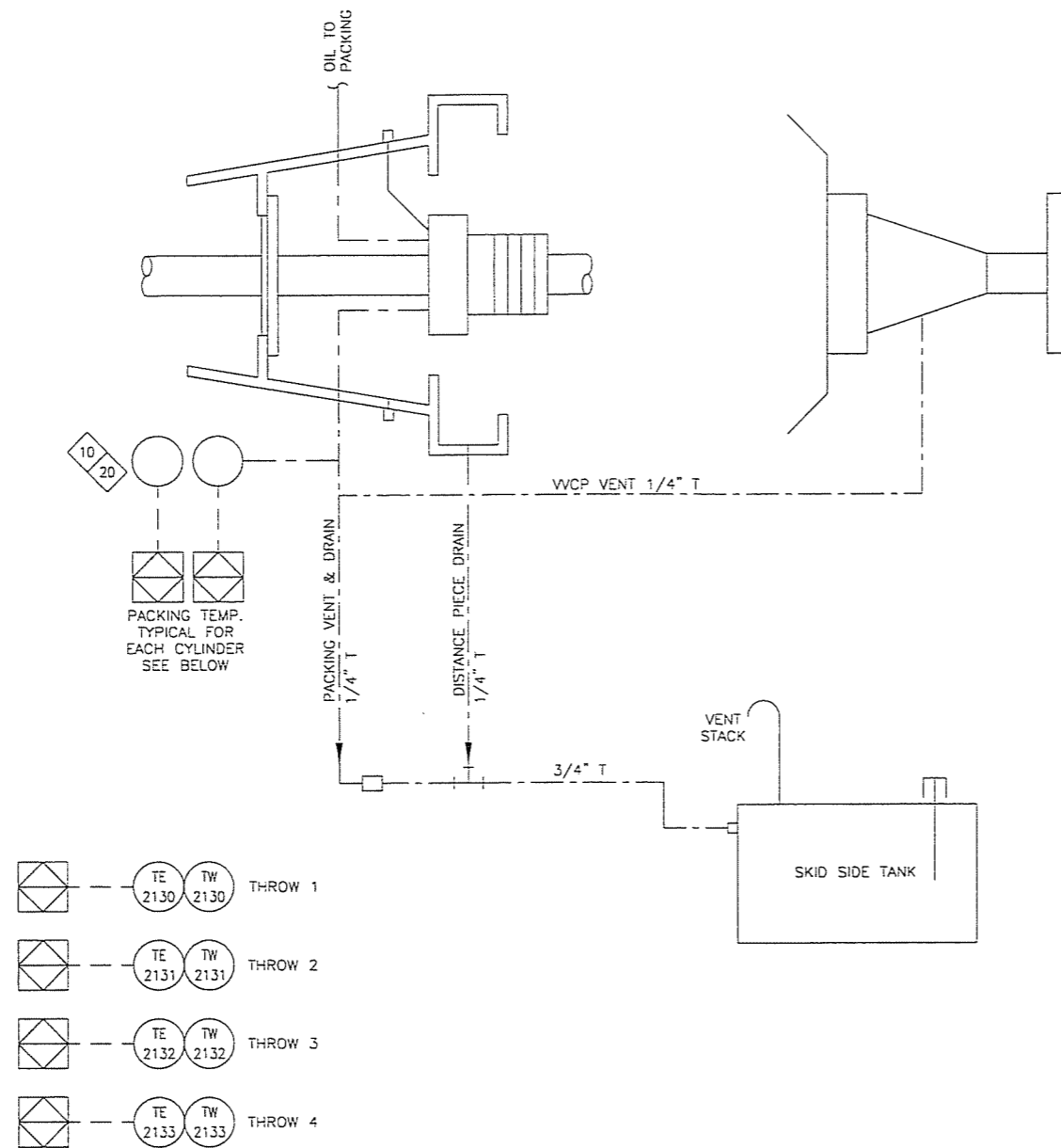
CONSULTANT: GAS LIQUIDS ENGINEERING LSD: TBA
P.O.: FAC 050962 JOB No.: 050659

DRWN BY: DGD/MGN	DESIGN BY: DGD	DATE: 05/07/04	DWG. No.	OP#
DATE: 05/07/04	CHKD BY:	DATE: CT	SF-050659-20	20
SCALE: NTS	APPVD BY:	DATE: 01/12/12		

F:\Projects\Custom\050659\Prod\SF-050659-20.dwg Dec 12, 2005 - 10:21am

P:\Projects\custom\050659\Pid\SF-050659-21.dwg Dec 12, 2005 - 10:21am

BILL OF MATERIAL		
ITEM	QTY	DESCRIPTION
10	4	114007 THERMOCOUPLE, K TYPE, 316SS, (THERMOCOUPLE, K125-316S-0042B-0250T2)
20	4	116701 THERMOWELL, 316SS, 1/2" X 1/2" NPTM X 2-1/2" LONG, U=1", .250" BORE, STEPPED
BILL OF MATERIAL: W 050659-30 : Packing Vent & Drain		
DATE-TIME EXPORTED: 2005-07-04-13:23		



AS-BUILT
DATE DEC 12 2005

REV	DESCRIPTION	DATE	DRAWN BY	CHECKED BY
3	AS BUILT	05/10/19	AYH	
2	REVISED PACKING TEMP. DESCRIPTIONS, PV & D CONNECTIONS	05/08/18	MGN	MW
1	ISSUE FOR CONSTRUCTION	05/07/19	MGN	CT
0	FOR APPROVAL	05/07/04	MGN	CT

EFX Compression
ENERFLEX

4700 47 Street SE Calgary AB Canada T2B 3R1 Canada Tel. +1.403.236.6800 Fax +1.403.279.0367
www.enerflex.com

TITLE: SERVICE FLOW
PACKING VENT & DRAIN (0% H2S)
ARIEL JGA/4

FOR: DEVON CANADA CORP.
(NARRAWAY, AB.)

CONSULTANT: GAS LIQUIDS ENGINEERING LSD: TBA
P.O.: FAC 050962 JOB No.: 050659

DRWN BY: DGD/MGN	DESIGN BY: DGD	DATE: 05/07/04	DWG. No.	OP#
DATE: 05/07/04	CHKD BY:	DATE: CT	SF-050659-21	21
SCALE: NTS	APPVD BY:	DATE: 05/10/12		

BILL OF MATERIAL

ITEM	QTY	EFX CODE	DESCRIPTION
2	1	102933	VALVE, BALL, 1-1/2" NPT, 2000# WOG, RP, 316SS, NACE C/W [NAVCO, C1-R15S20A]
5	1	103764	VALVE, RELAY, GAS, 1-1/4" NPT, MAWP 450 PSI [TDI, RLVA25683001200]
7	1	114516	STARTER, AIR/GAS, LOW 60-30 PSIG PRE-ENGAGED [TDI TURBOSTART, T312-60015-01R]
9	1	104851	REGULATOR, 1" NPT, DI, 1/2" OR, 15-40# SPR RING, SET @ 30 PSIG [FISHER, 627R-196]
10	1	104950	VALVE, CONTROL, 1" NPT, CAST IRON, 9/16" OR, 5-35 PSI, ON/OFF [FISHER, 119-12]
12	1	120608	FLANGE, STARTER EXHAUST, STRAIGHT, 2" NPTM, CS [TDI, T30-27398]
14	1	107895	GAUGE, PRESSURE, BM, 2-1/2" LF, 0-200 PSI DUAL, 1/4" NPT [WKA, 233.53]
15	1	102806	VALVE, NEEDLE, 1/4" TUBE, CS [WHITEY, S-1VS4]
16	2	102937	VALVE, BALL, 1" NPT, 2000# WOG, RP, 316SS, NACE C/W LOCKING [NAVCO, C1-R10S20A]
27	2	104493	SWITCH, LEVEL, 1-1/2" NPT, KP, CSA, SPDT (HI) C/W BUCYGLAS FLOAT [MURPHY, L1100]
28	1	118430	VALVE, CONTROL, 1" NPT, LCC, 3/4" OR, FC, SWEET, 0-33 PSI [FISHER, D4-X1A1K]
29	1	120186	VALVE, CHECK, PISTON, 1" NPT, 800# WOG, NACE [NAVCO, CP-R10S08A12]
30	1	103659	GAUGE, LEVEL, CS WITH REFLEX FLAT GLASS, 1820# [DANIEL, 71RL]
31	1	110243B	SUPPORT, VERTICAL FUEL GAS SCRUBBER, B145/250/270
32	1	109467	VESSEL, FUEL GAS SCRUB, 3-9/16" OD 285 MAWP, 100 DEG F, WAUK VHP/VGF, CAT 33/3400
34	1	102933	VALVE, BALL, 1-1/2" NPT, 2000# WOG, RP, 316SS, NACE C/W [NAVCO, C1-R15S20A]
35	1	102830	STRAINER, Y, 1-1/2" NPT, 1480 PSIG MAWP, CS, 1/32" SS SCREEN [ALTA, YS-600]
37	1	101154	FLOW METER, FUEL GAS, 1-1/2" FNPT (METRIC) [ROOTS, 8C175]
40	3	102937	VALVE, BALL, 1" NPT, 2000# WOG, RP, 316SS, NACE C/W LOCKING [NAVCO, C1-R10S20A]
50	1	110145	VALVE, BALL, 3/8" NPT, 2000# WOG, FP, SS, 2 PIECE C/W LOCKING HANDLE [MAS, G2]
55	1	123790	REGULATOR, 1" NPT, DI, 1/4" OR, 70-150# SPR RING, SET @ 150 PSIG [FISHER, 627-640]
56	1	122772	VALVE, PSV, 1" MNPT x 1" FNPT, "C" OR, NACE I [FARRIS, 27CA33-M20]
BILL OF MATERIAL:			W 050659-33
DATE-TIME EXPORTED:			2005-07-05-10.30

AS-BUILT
DATE FEB 03 2006

FUEL GAS
RATED 53 SCFM
@ 120 PSIG

START GAS
RATED 650 SCFM
@ 60 PSIG
PSV BY OTHERS

NOTES:
SITE INSTALLATION AND START UP MINIMUM REQUIREMENTS PER ENERFLEX SPECS 905-1 TO 905-7 MUST BE FOLLOWED.

ALL SERVICE LINES OPERATING ABOVE 15 PSIG MUST BE PRESSURE TESTED PER THE PROCEDURE IN QC MANUAL

OPTION No.	OPTION DESCRIPTION
<input type="checkbox"/> 2202A	UTILITY GAS FILTER SEPARATOR
<input type="checkbox"/> 2206A	FUEL GAS FLOW METER
<input type="checkbox"/> 2208A	UTILITY ESD VALVE C/W BETTIS ACTUATOR (REQUIRES 415), ALTRONIC
<input type="checkbox"/> 7001A	INSTRUMENT GAS SUPPLY BYPASS FOR HEATERS & ESD LOOP

REV	DESCRIPTION	DATE	DRAWN BY	CHECKED BY
3	AS BUILT	05/10/19	AYH	CS
2	REVISED AS NOTED	05/08/30	MGN	GS
1	ISSUE FOR CONSTRUCTION	05/07/20	MGN	CT
0	FOR APPROVAL	05/07/05	MGN	CT

EFX Compression
ENERFLEX

4700 47 Street SE Calgary AB Canada T2B 3R1 Canada Tel: +1.403.236.6800 Fax: +1.403.279.0367
www.enerflex.com

TITLE: SERVICE FLOW
FUEL & START GAS (OP 22)
WAUKESHA F18GL

FOR: DEVON CANADA CORP.
NARRAWAY, AB.

CONSULTANT: GAS LIQUIDS ENGINEERING
P.O.: FAC 050962
LSD: TBA
JOB No.: 050659

DRWN BY: MGN
DATE: 05/07/05
SCALE: NTS

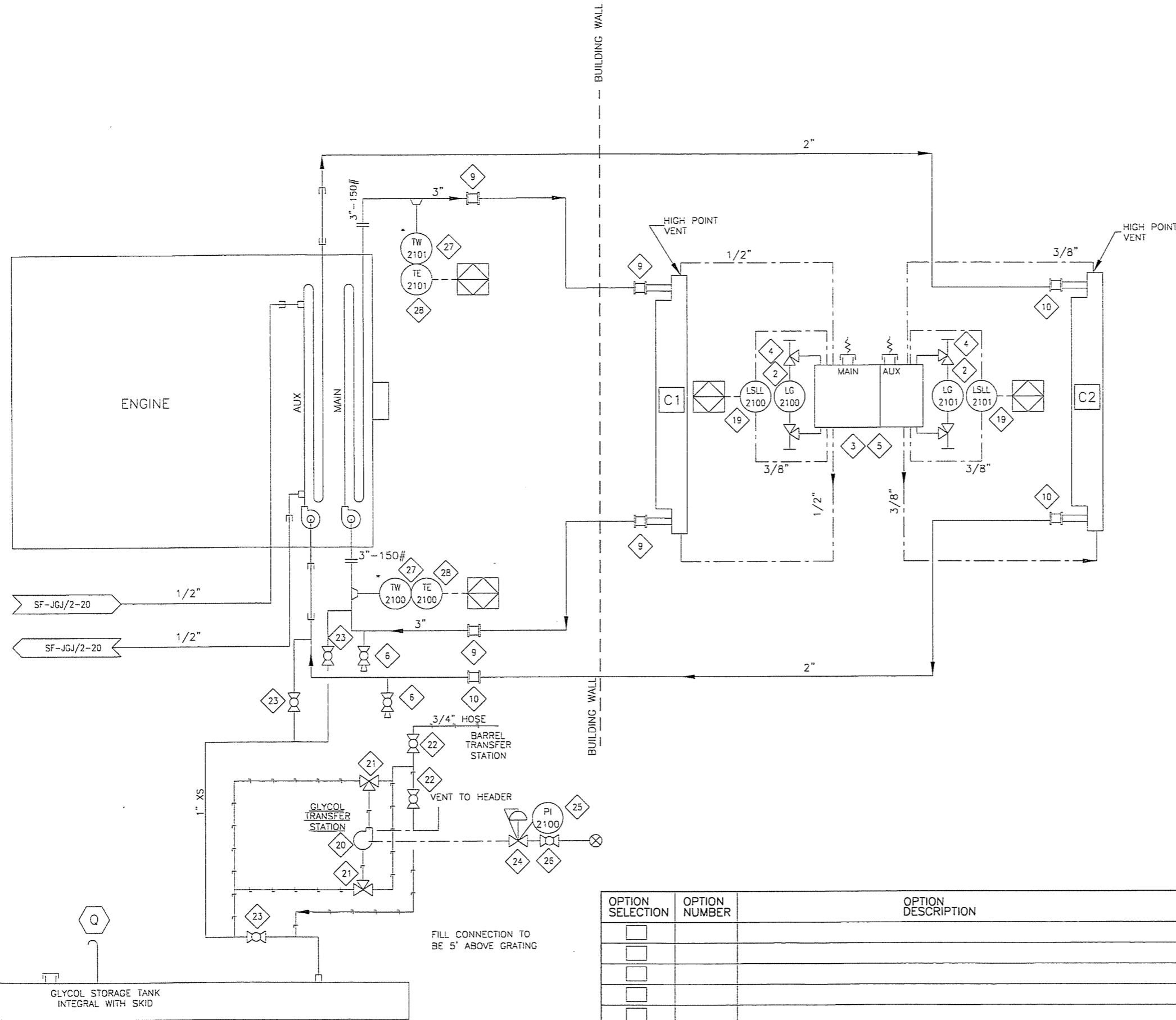
DESIGN BY: CT
CHKD BY: CT
APPVD BY: [Signature]

DATE: 06/01/06

DWG. No. SF-050659-22
OP# 22

P:\Projects\Custom\050659\Fuel_SF-050659-22.dwg Feb 03, 2006 - 11:17am

P:\ProJcts\Acustom\050659\Plat\SF-050659-24.dwg Dec 12, 2005 - 10:22am



BILL OF MATERIAL			
ITEM	QTY	EFX CODE	DESCRIPTION
2	1	104482	GAUGE, LEVEL, COOLANT WITH SIGHT GLASS, SPDT [MURPHY, EL150K1]
3	1	109170C	TANK, COOLANT SURGE, B400/401/530/570
4	2	104559	VALVE, SET GAUGE, SWEET, 5/8" OD TUBULAR X 1/2" MNPT, BRASS [CRANE, 20-104-03]
5	1	107270	COOLANT, 50/50 GLYCOL/WATER, 50C (205L DRUM) [UCARTHERM, 1277952]
6	2	102972	VALVE, BALL, 3/4" NPT, 2000# WDG, RP, A105 BODY, NACE C/W [NAVCO, HI-R07S20S]
9	4	101235	COUPLING, STRAIGHT, 3", STYLE 3B [DRESSER, 0038-0187-011]
10	3	101245	COUPLING, STRAIGHT, 2", STYLE 90 [DRESSER, 0090-0005-082]
19	2	104482	GAUGE, LEVEL, COOLANT WITH SIGHT GLASS, SPDT [MURPHY, EL150K1]
20	2	107477	PUMP, DIAPHRAGM, 1/2" NPT, ALUMINUM, BUNA, #01-10001 [WILDEN, T1/AYY3/BN/BN/ABN]
21	2	121893	VALVE, BALL, 3-WAY, 1" NPT, FULL SS, 800 PSI C/W LOCKING HANDLE [MAS, G4]
22	2	102973	VALVE, BALL, 3/4" NPT, 2000# WDG, RP, 316SS, NACE C/W [NAVCO, CI-R07S20A]
23	3	102937	VALVE, BALL, 1" NPT, 2000# WDG, RP, 316SS, NACE C/W LOCKING [NAVCO, CI-R10S20A]
24	1	104872	REGULATOR, 1/4" NPT, ALUM, 0-125#, TAPPED (W/O PI) [FISHER, 67CFR-60L/SPEC]
25	1	107933	GAUGE, PRESSURE, CBM, 1-1/2" DRY, 0-60 PSI DUAL, 1/8" NPT [WIKA, 11110]
26	1	102950	VALVE, BALL, 1/4" NPT, 2000# WDG, RP, 316SS, NACE C/W [NAVCO, CI-R02S20A]
27	2	107975	THERMOWELL, 304SS, 1/2" X 3/4" NPTM X 2-1/2" LONG, U=1", 260° BORE, STEPPED
28	2	114007	THERMOCOUPLE, K TYPE, 316SS, [THERMOKINETICS, K125-316S-004.08-82SYT2]

 BILL OF MATERIAL: W 050659-39 - Cooling
 DATE-TIME EXPORTED: 2005-07-04-14:14

AS-BUILT

DATE DEC 12 2005

NOTES:

* SUPPLIED BY VENDOR

REV	DESCRIPTION	DATE	DRAWN BY	CHECKED BY
4	AS BUILT	05/10/19	AYH	
3	REMOVED ITEM # 7,8,11 & 12	05/08/30	MGN	GS
2	ADDED ITEM # 27 & 28	05/08/02	MGN	CT
1	ISSUE FOR CONSTRUCTION	05/07/20	MGN	CT
0	ISSUE FOR APPROVAL	05/07/04	MGN	CT

EFX Compression
ENERFLEX

4700 47 Street SE Calgary AB Canada T2B 3R1 Canada Tel: +1.403.236.6800 Fax: +1.403.279.0367
 www.enerflex.com

TITLE:	SERVICE FLOW ENGINE COOLING SYSTEM B400/B400X (OP24)		
FOR:	DEVON CANADA CORP. NARRAWAY, AB		
CONSULTANT:	GAS LIQUIDS ENGINEERING P.O.: FAC 050962	LSD: TBA JOB No.: 050659	
DRWN BY:	MGN	DESIGN BY:	-
DATE:	05/07/04	CHKD BY:	CT
SCALE:	NTS	APPVD BY:	<i>[Signature]</i>
		DATE:	07/12
		DATE:	
		DWG. No.	SF-050659-24
		OP #	24

OPTION SELECTION	OPTION NUMBER	OPTION DESCRIPTION
<input type="checkbox"/>		
<input type="checkbox"/>		
<input type="checkbox"/>		
<input type="checkbox"/>		
<input type="checkbox"/>		
<input type="checkbox"/>		

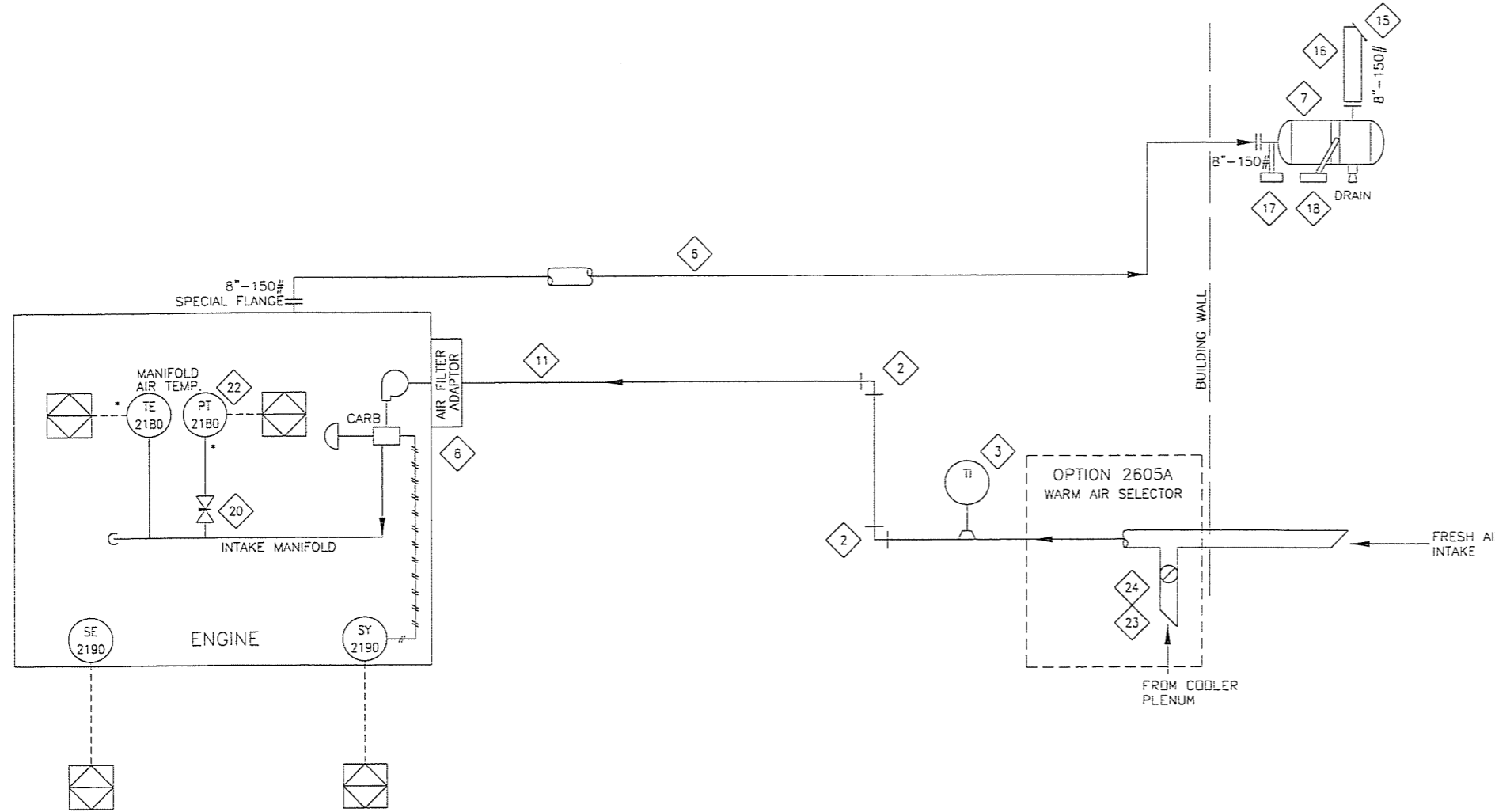
P:\Projects\custom\050659\Fid\SF-050659-26.dwg Dec 12, 2005 10:22am

BILL OF MATERIAL

ITEM	QTY	EFX CODE	DESCRIPTION
2	2	103512	ELBOW, RUBBER, 90 DEG, 6" [NELSON, 89824K]
3	1	107675	GAUGE, TEMP, 3" DIAL LF, 2-1/2" STEM, -40/120 DEG.F DUAL, 1/2" [TREND, SF30025]
6	1	120765B	EXHAUST LINE, SS INSULATED, 6", B400 (F18GL)
7	1	104722	MUFFLER, SUPER CRITICAL GR, 8" 150# END IN/SIDE OUT [SILEX, JC-B-S012-GIGO-A]
8	1	109587	AIR FILTER ADAPTOR, 6" W, B400
11	10	104567	EXHAUST TUBING, MECHANICAL, 6" OD X 12 GAUGE (.109 WALL), ERW
15	1	103518	EXHAUST, RAIN CAP, 6" OD
16	1	120766B	EXHAUST, STACK, 6" OD, B400
17	1	109155C	SUPPORT, MUFFLER, AUX., B400/530
18	1	112875B	SUPPORT, MUFFLER, B400/530
20	1	102808	VALVE, NEEDLE, 1/4" TUBE, 316SS [WHITEY, SS-1VS4]
22	1	107994	TRANSMITTER, PRESSURE, -30"HG/30 PSIG, SWEET, 1/4" NPT [WKA]
22	1	107994	TRANSMITTER, PRESSURE, -30"HG/30 PSIG, SWEET, 1/4" NPT [WKA]
23	1	110271	WARM AIR SELECTOR 6", B400
24	1	110162	TUBECLAMP, 6"

OPTIONS

ITEM	QTY	EFX CODE	DESCRIPTION
30	1	104463	PYROMETER, F18GL, 25' LEAD COMPLETE C/W HARNESS, 6 PROBES, TMP100 REMOTE DISPLAY
			BILL OF MATERIAL: M 108462 : ASSEMBLY, DRIVER, AIR/EXHAUST, F18GL-LCR, B400



AS-BUILT
DATE DEC 12 2005

NOTES:

* SUPPLIED BY VENDOR

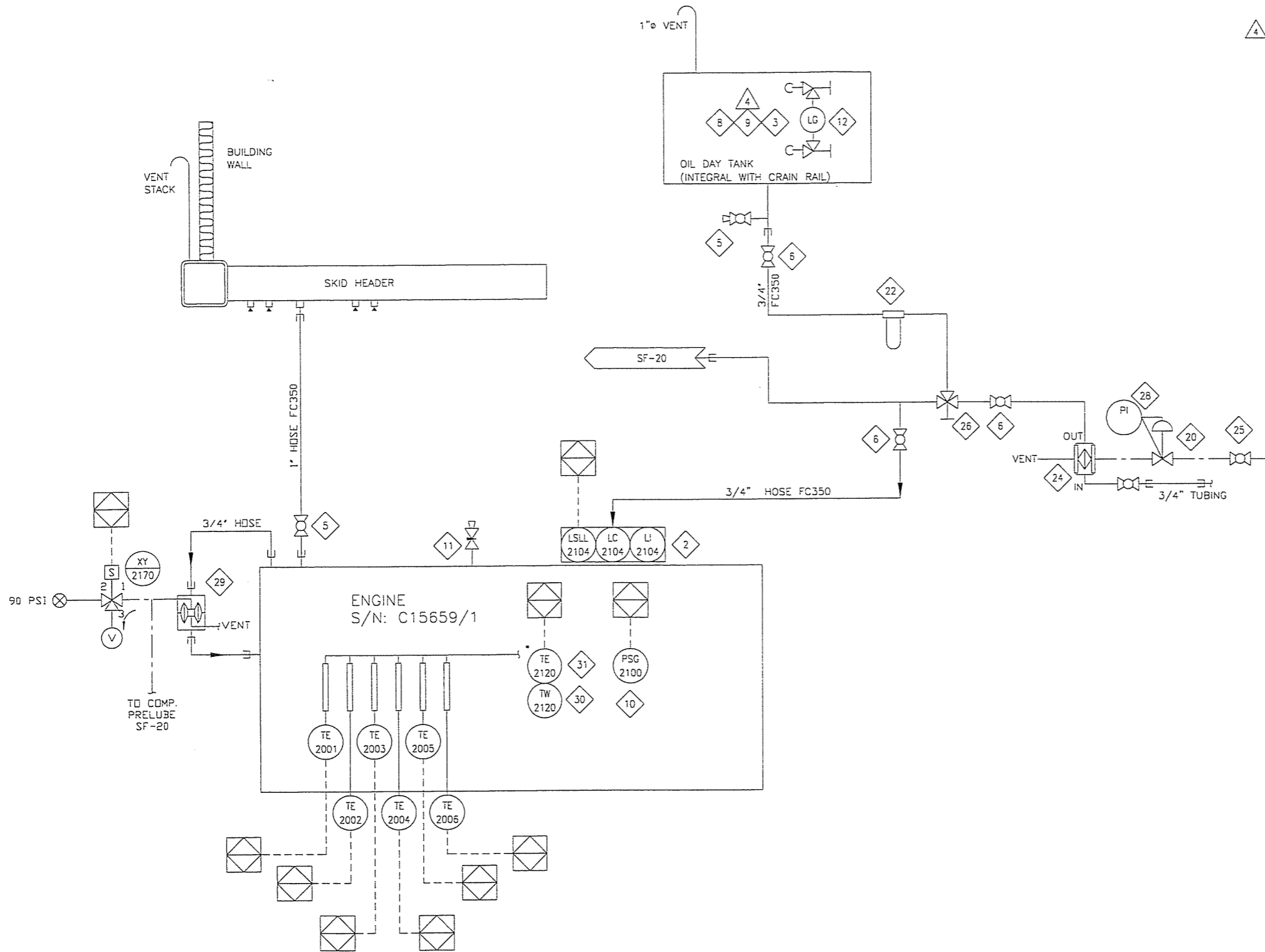
REV	DESCRIPTION	DATE	DRAWN BY	CHECKED BY
3	AS BUILT	05/10/19	AYH	AYH
2	ADDED WARM AIR SELECTOR	05/08/18	AYH	AYH
1	ISSUE FOR CONSTRUCTION	05/07/21	MGN	CT
0	FOR APPROVAL	05/07/04	MGN	CT

EPX Compression

4700 47 Street SE Calgary AB Canada T2B 3R1 Canada Tel. +1.403.236.6800 Fax +1.403.279.0367
www.enerflex.com

TITLE:	SERVICE FLOW AIR & EXHAUST WAUKESHA F18GL		
FOR:	DEVON CANADA CORP. NARRAWAY, AB.		
CONSULTANT:	GAS LIQUIDS ENGINEERING	LSD: TBA	JOB No.: 050659
P.O.:	FAC 050962		
DRWN BY:	MGN	DESIGN BY:	DGD
DATE:	05/07/04	CHKD BY:	CT
SCALE:	NTS	DATE:	05/12/04
		APPVD BY:	[Signature]
		DWG. No.:	SF-050659-26
		OP#:	26

OPTION SELECTION	OPTION NUMBER	OPTION DESCRIPTION
<input type="checkbox"/>		
<input type="checkbox"/>		
<input type="checkbox"/>		
<input type="checkbox"/>		
<input type="checkbox"/>		



BILL OF MATERIAL			
ITEM	QTY	EFX CODE	DESCRIPTION
2	1	107969	CONTROLLER, OIL LEVEL C/W ELECTRIC SWITCH, XP, CSA C/W BRACKET (KENC0, KLCE-9)
3	1	104559	VALVE, SET GAUGE, SWEET, 5/8" OD TUBULAR X 1/2" MNPT, BRASS (CRANE, 20-104-03)
5	2	102937	VALVE, BALL, 1" NPT, 2000# WDG, RP, 316SS, NACE C/W LOCKING (NAVCO, CI-R10S20A)
6	4	102973	VALVE, BALL, 3/4" NPT, 2000# WDG, RP, 316SS, NACE C/W (NAVCO, CI-R07S20A)
8	1	104080	OIL, LUBE, BULK (1,600 LITRE CUBED) (PETRO CANADA, SENTINAL 445)
9	1	NPN	TANK, OIL, IN CRANE RAIL
10	1	116229	SWITCHGAUGE, PRESSURE, PM, 2-1/2" DIAL, 0-150 PSI, 1/4" NPT (MURPHY, A2SPEF150)
11	1	110142	VALVE, NEEDLE, OIL SAMPLE, 1/4" FNPT, BRASS (MURPHY, B-4JN4)
12	1	104482	GAUGE, LEVEL, COOLANT WITH SIGHT GLASS, SPDT (MURPHY, EL150K1)
20	1	104872	REGULATOR, 1/4" NPT, ALUM, 0-125#, TAPPED (W/D PI) (FISHER, 67CFR-601/SPEC)
22	1	104295	FILTER, OIL, ASSEMBLY, 1" FNPT C/W BF915 ELEMENT & BASE FB1307 (BALDWIN, BL914)
24	1	107479	PUMP, DIAPHRAGM, 1" NPT, ALUMINUM, BUNA, #02-10007 (WILDEN, T2/AAA3/BN/ABN247)
25	1	102949	VALVE, BALL, 1/2" NPT, 2000# WDG, RP, 316SS, NACE C/W (NAVCO, CI-R05S20A)
26	1	121893	VALVE, BALL, 3-WAY, 1" NPT, FULL SS, 800 PSI C/W LOCKING HANDLE (MAS, G4)
28	1	107894	GAUGE, PRESSURE, CBM, 2" DRY, 0-200 PSI DUAL, 1/4" NPT (WIKA, 111.10)
29	1	121741	PUMP, DIAPHRAGM, 1/2" NPT, ALUM, SWEET GAS, CSA (WARREN RUPP, G0531ABTXSX00)
30	1	107975	THERMOWELL, 304SS, 1/2" X 3/4" NPTM X 2-1/2" LONG, U=1", .260" BORE, STEPPED
31	1	114007	THERMOCOUPLE, K TYPE, 316SS, (THERMOKINETICS, K125-316S-004.03-02SYT2)

BILL OF MATERIAL: W 050659-40 : Lubrication			
DATE-TIME EXPORTED: 2005-07-04-14:24			

AS-BUILT
DATE DEC 12 2005

NOTES:

* SUPPLIED BY VENDOR

REV	DESCRIPTION	DATE	DRAWN BY	CHECKED BY
5	AS BUILT	05/10/19	AYH	GS
4	REVISED ITEM # 9	05/08/30	MGN	GS
3	REVISED ITEM # 29	05/08/09	AYH	
2	ADDED ITEM # 30 & 31	05/08/02	MGN	
1	ISSUE FOR CONSTRUCTION	05/07/20	MGN	CT
0	ISSUE FOR APPROVAL	05/07/05	MGN	CT

EFX Compression
ENERFLEX

4700 47 Street SE Calgary AB Canada T2B 3R1 Canada Tel. +1.403.236.6800 Fax +1.403.279.0367
www.enerflex.com

TITLE:	SERVICE FLOW ENGINE LUBE OIL WAUKESHA F18GL, ARIEL JGA/4, AIR-X 93EH			
FOR:	DEVON CANADA CORP, NARRAWAY, AB.			
CONSULTANT:	GAS LIQUIDS ENGINEERING P.O.: FAC 050962			
LSO:	TBA JOB No.: 050659			
DRWN BY: MGN	DESIGN BY: DGD	DATE:	DWG. No.	OP#
DATE: 05/07/04	CHKD BY: CT	DATE: -	SF-050659-27	27
SCALE: NTS	APPVD BY: [Signature]	DATE: 12/12		

OPTION SELECTION	OPTION NUMBER	OPTION DESCRIPTION
<input checked="" type="checkbox"/>	2606A	ENGINE MOUNTED CYLINDER EXHAUST PYROMETER, B400/400X
<input type="checkbox"/>		
<input type="checkbox"/>		
<input type="checkbox"/>		
<input type="checkbox"/>		
<input type="checkbox"/>		

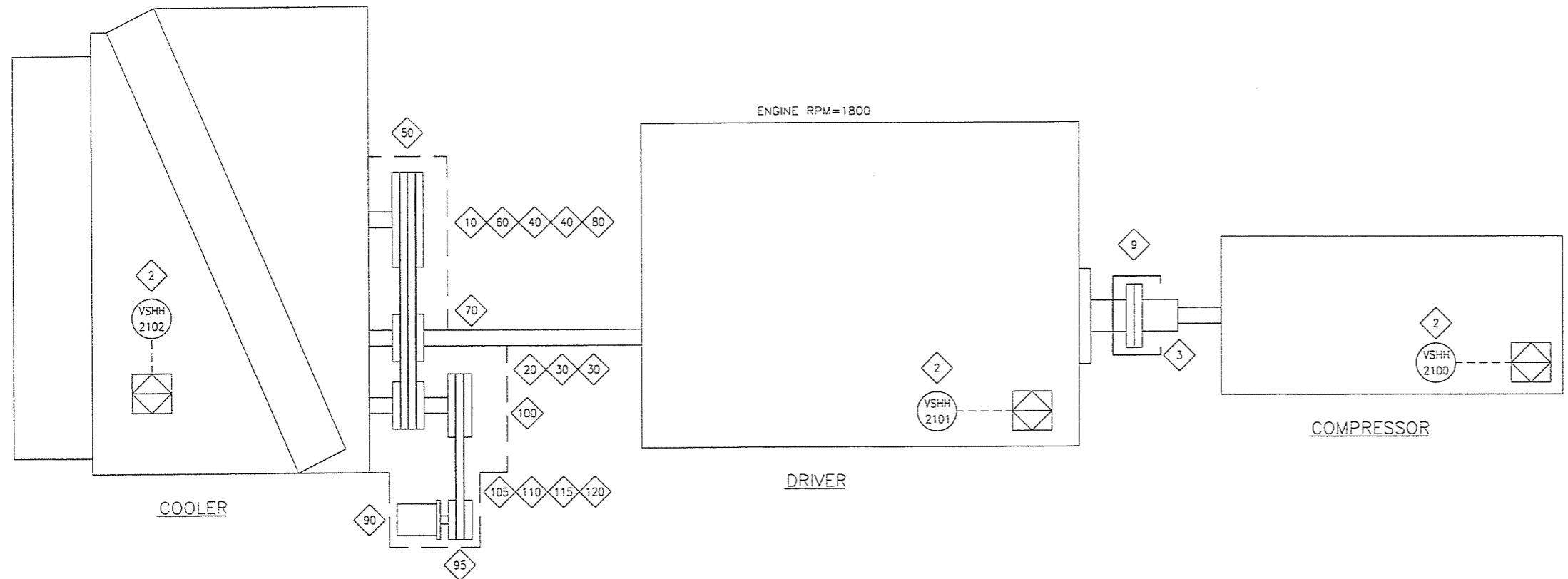
P:\P\d.lects\yous\com\050659\Prod\SF-050659-27.dwg Dec 12, 2005 - 10:23am

P:\Projects\custom\050659\Pic\SF-050659-28.dwg Dec 12, 2005 - 10:23am

COOLER
93EH AIR-X-CHANGERS

DRIVER
F18GL-WAUKESHA

COMPRESSOR
JGA/4 ARIEL



BILL OF MATERIAL

ITEM	QTY	EFX CODE	DESCRIPTION
2	3	104524	SWITCH, VIBRATION, ELECTRIC C/W MANUAL RESET [MURPHY, VS2]
3	1	117604	COUPLING, ADAPTER PLATE 22.5" OD SAE, B400/3, [FORMFLEX, FSH35-22B-GA4-SAE]
9	1	109552	GUARD, COUPLING/FLYWHEEL, 500CMR, B400/530/570
10	1	107059	BUSHING, E 2-7/16" [BROWNING, E]
20	1	107114	BUSHING, SK 2-7/16" [BROWNING, SK]
30	2	124306	SHEAVE, 2-GROOVE, QD USED WITH SK BUSHING [BROWNING, 25V670SK]
40	2	107053	V-BELT, GRIPNOTCH [GOODYEAR, 5VX1400]
50	1	109532	GUARD, COOLER BELT, B400/530
60	1	107145	SHEAVE, 2-GROOVE, QD, USED WITH E BUSHING [BROWNING, 25V2800E]
70	1	109136C	STUB SHAFT, F18GL/H24GL
80	1	107113	BUSHING, SK 2-3/16" SHALLOW KEYWAY [BROWNING, SK]
90	1	104751B	ALTERNATOR ASSY, 24 VDC, 30 AMP C/W INTEGRAL REG #A2-101 [CE NIEHOFF, A1-101]
95	1	110194	GUARD, 24V ALTERNATOR
100	1	107104	BUSHING, O1 2-3/16" [BROWNING, O1]
105	1	107157	SHEAVE, 2-GROOVE, USED WITH O1 BUSHING [BROWNING, 2TA120]
110	2	106982	V-BELT, A-SECTION [GOODYEAR, A-45]
115	1	102822	REGISTRATION, CSA, UPS GENERATOR ASSEMBLY
120	1	112267	BRACKET, 24V UPS, B-SERIES

BILL OF MATERIAL: W 050659-44 : Cooler Drive
DATE-TIME EXPORTED: 2005-07-05-16.42

AS-BUILT
DATE DEC 12 2005

REV	DESCRIPTION	DATE	DRAWN BY	CHECKED BY
2	AS BUILT	05/10/20	AYH	AYH
1	ISSUE FOR CONSTRUCTION	05/07/20	MGN	CT
0	ISSUE FOR APPROVAL	05/07/05	MGN	CT

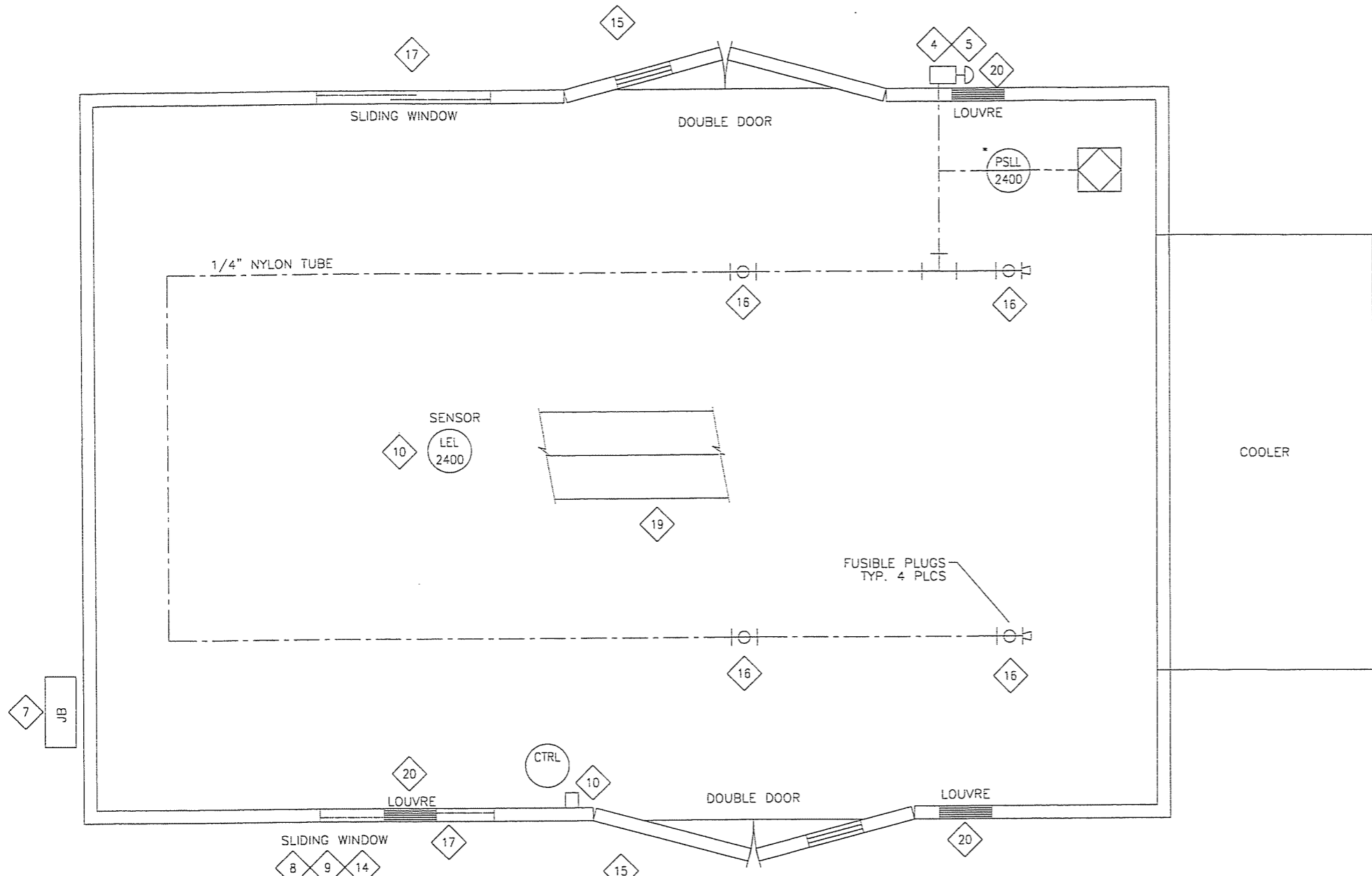
EFX Compression
ENERFLEX

4700 47 Street SE Calgary AB Canada T2B 3R1 Canada Tel. +1.403.236.6800 Fax +1.403.279.0367
www.enerflex.com

TITLE:		DRIVE TRAIN EQUIPMENT B400 (OP28)	
FOR:		DEVON CANADA CORP. NARRAWAY, AB.	
CONSULTANT: GAS LIQUIDS ENGINEERING P.O.: FAC 050962		LSD: TBA JOB No.: 050659	
DRWN BY: MGN DATE: 05/07/05 SCALE: NTS	DESIGN BY: CT CHKD BY: CT APPVD BY: [Signature]	DATE: [Signature] DATE: [Signature]	DWG. No. SF-050659-28 OP# 28

OPTION SELECTION	OPTION NUMBER	
<input type="checkbox"/>	2801A	UPS 24V DC
<input type="checkbox"/>		
<input type="checkbox"/>		
<input type="checkbox"/>		
<input type="checkbox"/>		
<input type="checkbox"/>		

P:\Projects\custom\050659\Pid\SF-050659-70.dwg Dec 12, 2005 - 10:27am



BUILDING EQUIPMENT AND DETAILS

COLOR SCHEDULE

- WALL INTERIOR LINER: 24 GA FLUTED ALUM. WHITE, BOTTOM 3', REMAINDER PERFORATED WHITE.
- WALL EXTERIOR LINER: 22 GA GALVALUM
- COOLER: EM WARM GREY
- EQUIPMENT: EM WARM GREY
- SKID PERIMETER: EM WARM GREY
- GRATING: BLACK
- SCRUBBER DRAINS: EM SILVER GREY

OPTION SELECTION	OPTION NUMBER	
<input type="checkbox"/>	7003A	BUILDING LIGHTS 12VDC, B SERIES
<input type="checkbox"/>	7002A	EXTRA EXTERIOR ESD BUTTON
<input type="checkbox"/>	7006B	FIRE DETECTOR
<input checked="" type="checkbox"/>	7008	ICE BREAKERS
<input type="checkbox"/>	7009	PERFORATED WHITE LINEAR
<input type="checkbox"/>		

BILL OF MATERIAL

ITEM	QTY	EFX CODE	DESCRIPTION
2	1	104635	BLDG, B400, 22G GALV EXTERIOR, 24G FLUTED ALUM. INT., R12 BATT INSULATION ROOF
4	1	104809	VALVE, 3-WAY, TYPE CA, 1/4" NPTF C/W RED KNOB (AMDT, 4057D019F1-RFE)
5	1	104792	BRACKET, MOUNT, FOR 3-WAY 4057 VALVE (AMDT, 5186)
6	1	110228	DECALS (SPECIFY DETAIL)
7	1	104307	JUNCTION BDX ASSY, CSA, CLASS 1, DIV.1, GROUPS C&D (NET SAFETY, JS2-4)
8	1	104309	ACCESSORY, CALIBRATION CUP, SPLASH GUARD & RAINSHIELD (NET SAFETY, CCS-1)
9	1	104312	CALIBRATION, OF SENSORS GAS LEL & FIRE C/W CALIBRATION CERTIFICATE (NET SAFETY)
10	1	116122	DETECTOR, COMBUSTIBLE GAS DETECTION, MILLENNIUM (NET SAFETY, MLP-AR-SC1100-SEP)
14	1	103105	WIRE, OF MICROWATT XP LEL GAS SENSOR, B & C-SERIES
15	2	113483	SIGN, UNIT, 60 X 50 CM WHITE .040 ALUMINUM (PORTABLE COMPRESSOR UNIT)
16	4	102752	FTG. TUBE, 3/8" T FUSIBLE PLUG, 255 DEG.F, 316SS (SWAGelok, SS-6-FTA-255)
17	2	107566	WINDOW, DOUBLE GLAZED, 40" X 40" C/W 1/2 SCREEN
18	2	107545	MANDOOR, DOUBLE, 6' X 7' ST, R4 INSULATION, IWS, WINDOW CLOSER PAN HARDWARE
19	12	110400	VENT, RIDGE, LINEAR FT, 6', THRDAT C/W MANUAL DAMPNER & BIRD SCREEN
20	3	112605	LOUVRE, MANUAL ADJUSTABLE, 12" X 12" WITH BIRD SCREEN
			BILL OF MATERIAL: W 050659-68 : BUILDING
			DATE-TIME EXPORTED: 2005-07-06-13:38

AS-BUILT
DATE DEC 12 2005

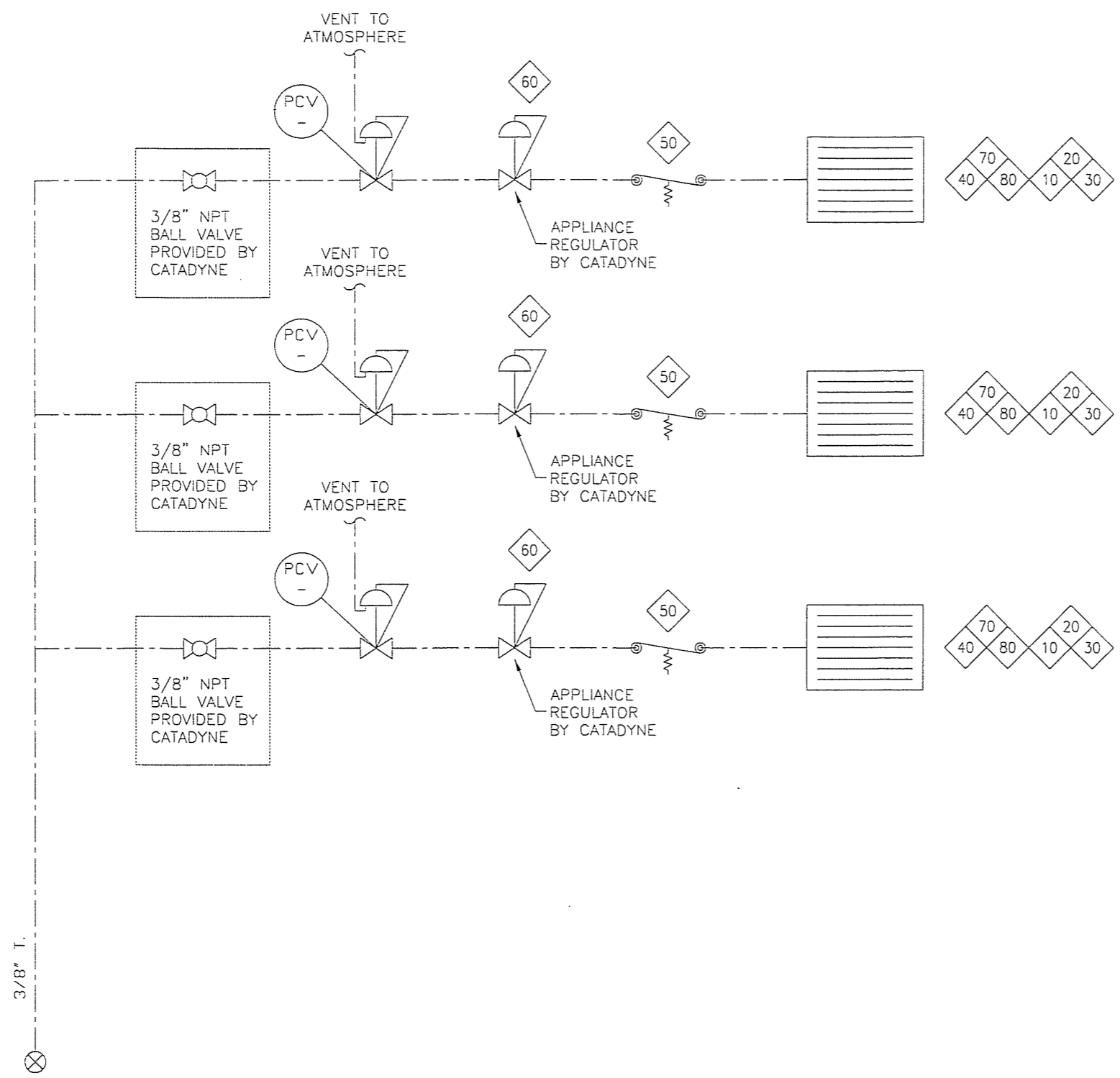
NOTE:
ALL DOORS c/w ALUMINUM THRESHOLD, VINYL WEATHER STRIPPING, HEAVY DUTY HINGES, HEAVY DUTY FRAME, CYLINDER LOCK, HEAVY DUTY WEEPS & PAINT. ALL DOUBLE DOORS c/w HEAD & FOOT BOLTS ON INACTIVE LEAF.
* INCLUDED IN CONTROL PANEL

REV	DESCRIPTION	DATE	DRAWN BY	CHECKED BY
1	AS BUILT	05/10/19	AYH	LB
0	ISSUE FOR CONSTRUCTION	05/07/05	MGN	LB

EFX Compression
ENERFLEX
4700 47 Street SE Calgary AB Canada T2B 3R1 Canada Tel. +1.403.236.6800 Fax +1.403.279.0367
www.enerflex.com

TITLE:	SERVICE FLOW BUILDING EQUIPMENT B400 (OP70)
FOR:	DEVON CANADA CORP. NARRAWAY, AB.
CONSULTANT:	GAS LIQUIDS ENGINEERING P.O.: FAC 050962
DRWN BY:	MGN
DATE:	05/07/05
SCALE:	NTS
DESIGN BY:	CT
CHKD BY:	CT
APPVD BY:	cto
DATE:	05/12/12
DWG. No.	SF-050659-70
OP #	70
LSD:	TBA
JOB No.:	050659

P:\Projects\Custom\050659\Pld\SF-050659-72.dwg Dec 12, 2005 - 10:27am



3/8" T.
 GAS SUPPLY
 150 PSIG MAX.
 FROM FUEL GAS
 SEE DWG 'SF-22'

BUILDING EQUIPMENT AND CONTROLS

BILL OF MATERIAL			
ITEM	QTY	EFX CODE	DESCRIPTION
10	3	103497	HEATER, 12 MBTU, 12 VOLT C/V VALVE-H17CB-5 [CATADYNE, WX1824-0001]
20	3	109154C	SUPPORT, HEATER FLAT
30	3	109152C	SUPPORT, HEATER CABLE
40	3	103102	WIRE, XP, HEATER 12VDC, B & C-SERIES
50	3	103517	HEATER, THERMOSTAT [CATADYNE, AC-TC]
60	3	103515	HEATER, REGULATOR, 250 PSIG, 11" WC, 1/4" X 3/8" NPT [CATADYNE, AC-R-912]
70	3	103512	HEATER, PROTECTION GRILL, 18" X 24" [CATADYNE, AC-GRILL-1824]
80	3	103516	HEATER, STARTING CABLES, 25' SDW, 10 GA. C/V CLIPS [CATADYNE, AC-LEAD-25]

BILL OF MATERIAL:			W 050659-69 : Heating
DATE-TIME EXPORTED			2005-07-04-16:13

AS-BUILT
 DATE DEC 12 2005

REV	DESCRIPTION	DATE	DRAWN BY	CHECKED BY
2	AS BUILT	05/10/19	AYH	CT
1	FOR CONSTRUCTION	05/05/11	AYH	
0	ISSUE FOR APPROVAL	05/07/05	MGN	CT

EFX Compression
 ENERFLEX

4700 47 Street SE Calgary AB Canada T2B 3R1 Canada Tel. +1.403.236.6800 Fax +1.403.279.0367
 www.enerflex.com

TITLE: BUILDING HEATERS
 CATADYNE
 COMPRESSOR PACKAGE

FOR: DEVON CANADA CORP.
 NARRAWAY, AB.

CONSULTANT: GAS LIQUIDS ENGINEERING LSD: TBA
 P.O.: FAC 050962 JOB No.: 050659

DRWN BY: MGN DESIGN BY: CT DATE: 05/07/05 DWG. No. OP#
 DATE: 05/07/05 CHKD BY: CT DATE: 05/10/19 SF-050659-72 72
 SCALE: NTS APPVD BY: *ct*