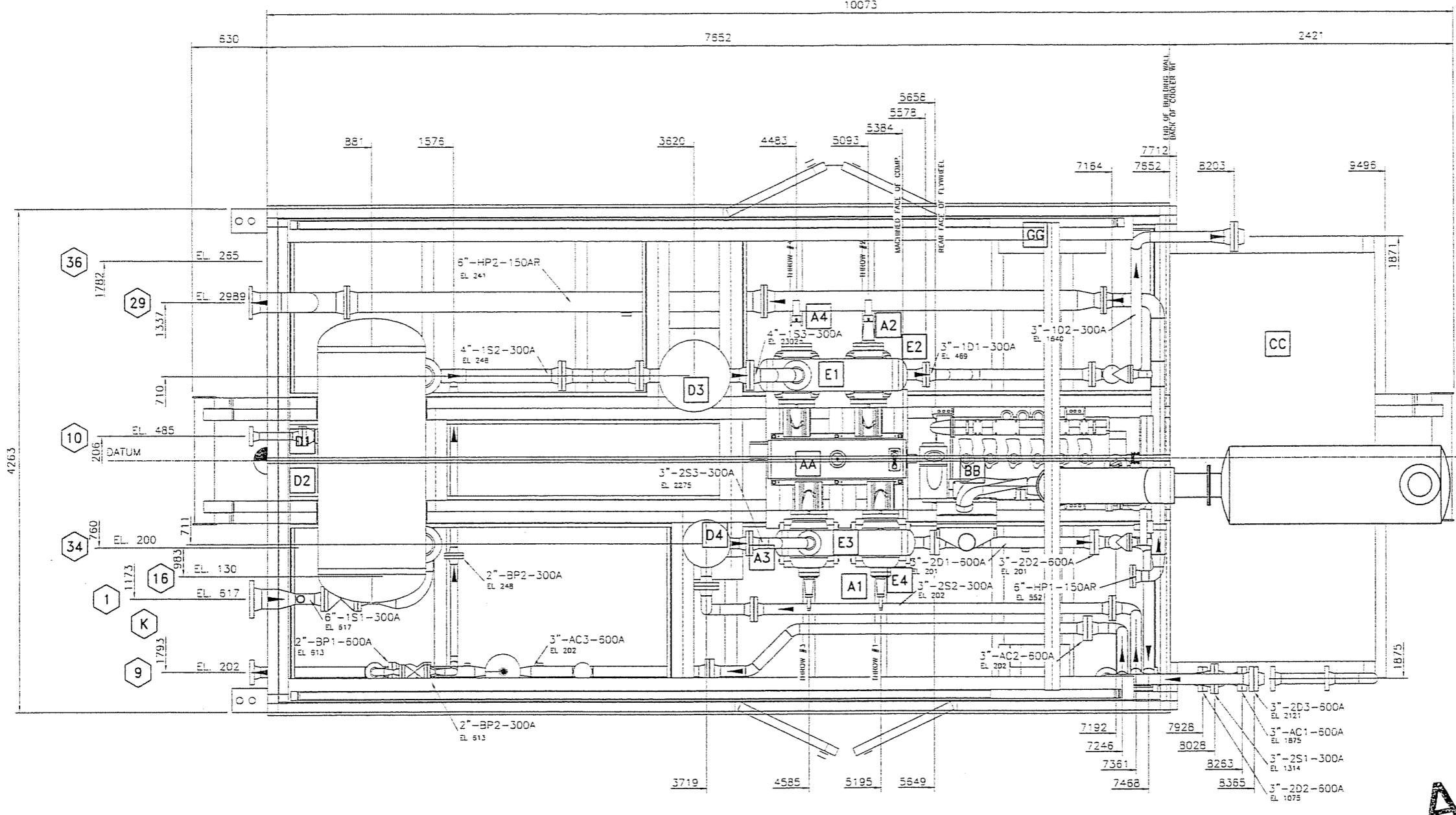


© 2004 Enerflex Systems Ltd.
 REPRODUCTION OF ANY PORTION OF THESE MATERIALS WITHOUT THE EXPRESS WRITTEN CONSENT OF ENERFLEX SYSTEMS LTD. IS STRICTLY PROHIBITED. THESE MATERIALS SHALL NOT BE USED FOR ANY PURPOSE OTHER THAN THE REPAIR AND MAINTENANCE OF THE PRODUCTS TO WHICH THEY RELATE.

COMPRESSOR UNBALANCED FORCES @ 1800 RPM		
	PRIMARY	SECONDARY
HORIZONTAL FORCE KIP	0.031	0.003
VERTICAL FORCE KIP	0.000	-
HORIZONTAL COUPLE KIP-FT	1.820	0.007
VERTICAL COUPLE KIP-FT	1.875	-



AS-BUILT
 DATE FEB 03 2006

PLAN VIEW

CUSTOMER CONNECTIONS		
NO.	DESCRIPTION	SIZE
1	PROCESS SUCTION	6"-300RF
9	PROCESS DISCHARGE	3"-500RF
10	BLOWCASE DRAIN	2"-500RF
16	SCRUBBER DRAIN	1 1/2" NPT
29	FLARE HEADER	8"-150RF
34	START GAS	1 1/2"-150RF
36	FUEL GAS	1 1/2"-150RF
OTHER CONNECTIONS		
K	START GAS EXHAUST	2"

MAJOR COMPONENTS & SHIPPING WEIGHTS			
	KG	LB.	
BB ENGINE			VESSELS
(1) WAUKESHA F18GL	3402	7500	DD SCRUBBERS
AA COMPRESSOR			D1 (1) 36" DIA. x 72' 5/8"
(1) ARIEL JGA/4	1542	3400	D2 (1) 18" DIA. x 45' 5/8"
A1 (1) 3 7/8"	235	520	D3 (1) 24" DIA. x 84' 5/8"
A2 (1) 5 1/8"	330	725	D4 (1) 16" DIA. x 34' 5/8"
A3 (1) 3 7/8"	235	520	EE BOTTLES
A4 (1) 5 1/8"	330	725	E1 (1) 110 3/4" DIAx40'S/S
			E2 (1) 110 3/4" DIAx40'S/S
			E3 (1) 118 5/8" DIAx38'S/S
			E4 (1) 118 5/8" DIAx38'S/S
CC COOLER			GG CONTROL PANEL
(1) AIR-EX. AXC 93 EH	5512	9050	(1) ESL PNEUMATIC/ELEC
SSILENCER	318	701	
PROCESS PIPING	1704	3757	
SKID WITH CONCRETE	2000	4400	
MISC. & LIQUIDS	454	1000	TOTAL SHIPPING WT.
BUILDING	355	780	28172
CRANE	900	2000	32000
			SHIPPED LOOSE ITEMS
			-
			TOTAL UNIT WEIGHT
			28172 32000

GENERAL NOTES

- THIS DRAWING IS NOT TO BE USED FOR CONSTRUCTION UNLESS STAMPED "RELEASED FOR MANUFACTURE".
- DO NOT SCALE THIS DRAWING.
- ALL DIMENSIONS ARE IN MILLIMETERS.
- FOR DESIGN PARAMETERS AND PART SPECIFICATION REFER TO PROJECT SCOPE SUMMARY DRAWING NO.55-050859
- ALL PIPING MUST BE SELF SUPPORTING BEYOND UNIT CONNECTIONS.
- LOCATIONS OF CUSTOMER CONNECTIONS ARE NOT GUARANTEED AS THESE DIMENSIONS MAY BE SUBJECT TO AN ACCUMULATION OF TOLERANCES ON SEVERAL COMPONENTS. MINOR CHANGES MAY ALSO BE MADE ON SCREWED SERVICE PIPING IN ORDER TO FACILITATE INSTALLATION AND MAINTENANCE. ON COMPLETION A FINAL DRAWING WILL BE ISSUED WITH FIELD CONNECTIONS CORRECTED TO 5 mm.
- IT IS ESL'S RECOMMENDATION THAT ANY PRE-SPoolING TO THIS COMPRESSOR PACKAGE CONTAIN FIELD WELDS AT ALL CUSTOMER CONNECTIONS.
- DIMENSIONS INDICATED (*) SHALL BE CONFIRMED AND CERTIFIED CORRECT (**) ON A FINAL REVISION
- THE FOLLOWING ITEMS WILL BE SHIPPED LOOSE FOR FIELD INSTALLATION BY OTHERS.

UNIT DIMENSIONS:	LENGTH		WIDTH		HEIGHT	
	mm	ft./in	mm	ft./in	mm	ft./in
MAIN SKID w/ ALL EQUIP MOUNTED	10105	33'-2"	4267	14'-0"	4018	13'-2 1/4"
SHIPPING DIMENSIONS	10105	33'-2"	4267	14'-0"	4018	13'-2 1/4"
COOLER	2604	8'-6 1/2"	5252	17'-2 3/4"	3270	10'-8 3/4"
REV	DESCRIPTION	DATE	DRAWN BY	CHECKED BY		
3	AS BUILT	05/09/22	DGD			
2	ADDED LINE ANNOTATIONS	05/08/09	DH			
1	ISSUE FOR CONSTRUCTION	05/08/05	DGD			
0	ISSUE FOR APPROVAL	05/07/21	DGD			

EFX Compression

4700 47 Street SE Calgary AB Canada T2B 3M1 Canada Tel: +1 403.238.6800 Fax: +1 403.278.0317 www.enerflex.com

TITLE: **GENERAL ARRANGEMENT**
ARIEL JGA/4, WAUKESHA F18GL, AXC 93 EH
COMPRESSOR PACKAGE

FOR: **DEVON CANADA CORP. ADVANTAGE OIL & GAS**
(NARRAWAY, ALBERTA)

CONSULTANT: **LSD: TBA**
JOB No.: 050859

DRWN BY: **DGD** DESIGN BY: **DGD** DATE: **05/08/01** DWG. No.: **GA-050859** OP# **10**
 P.O.: **DGD** DATE: **05/08/05** JOB No.: **050859**
 SCALE: **MTS** APPVD BY: **UO** DATE: **06/21/03**

