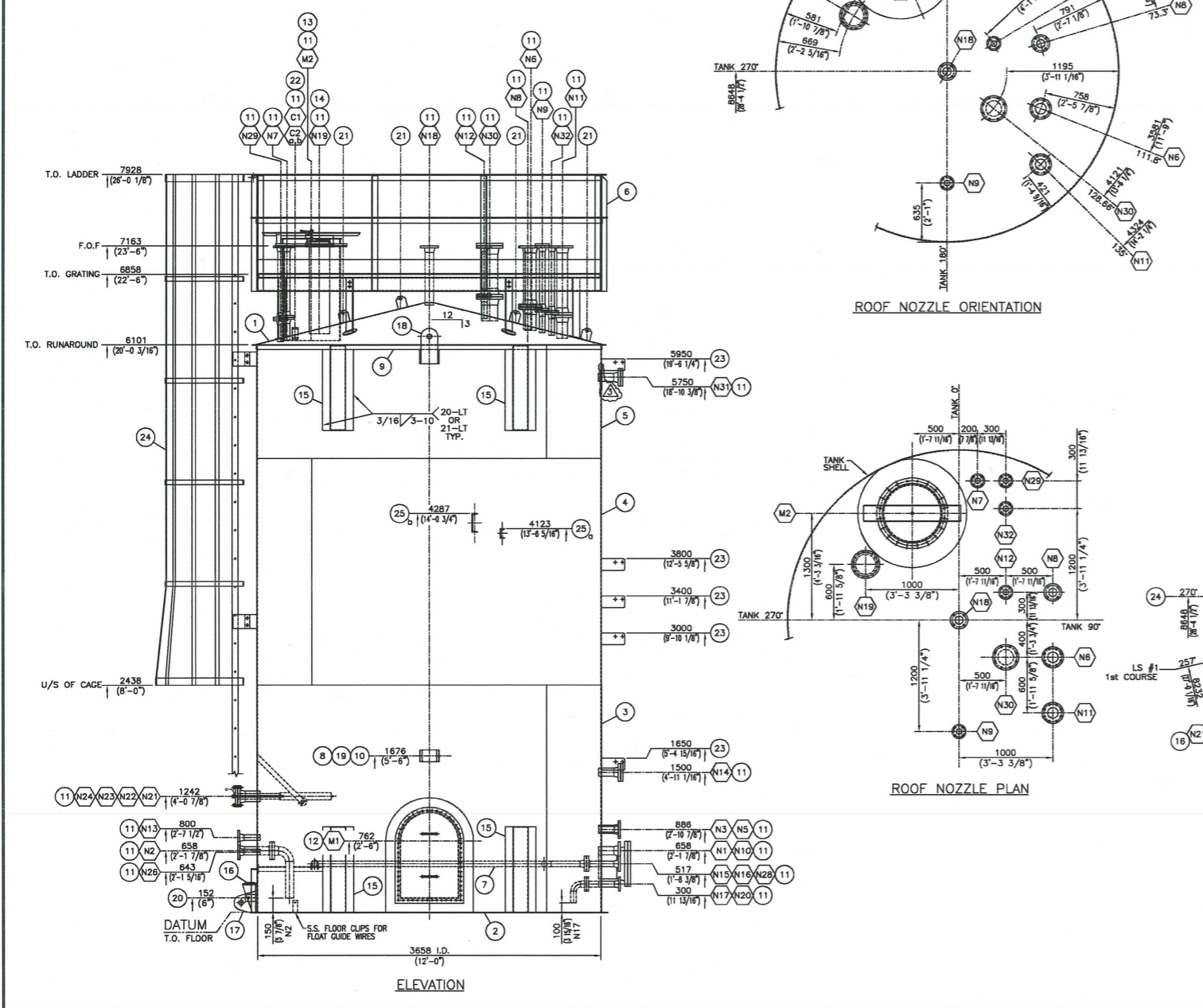
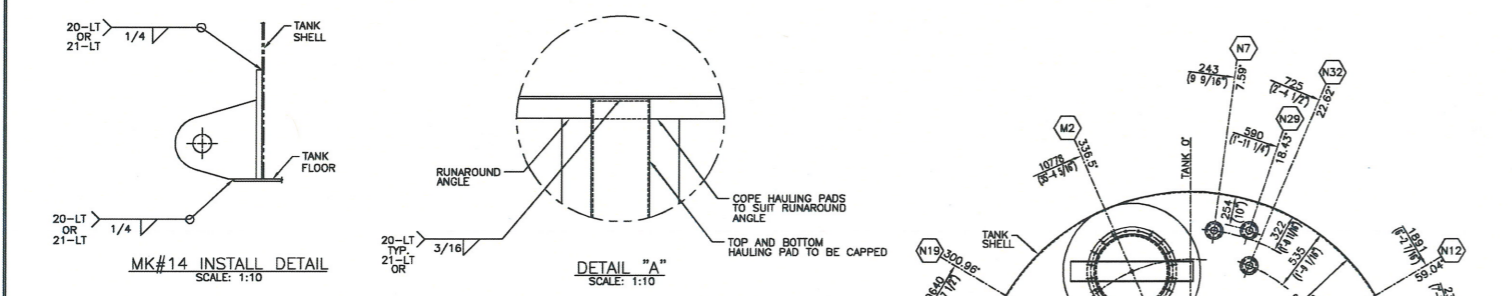
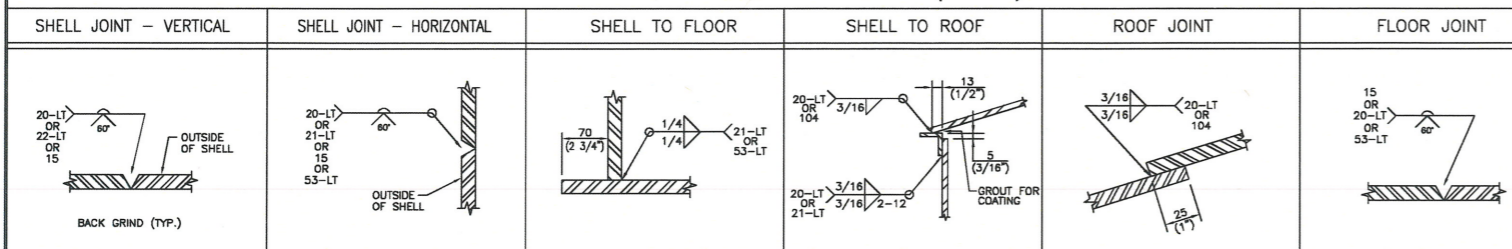


STANDARD WELD DETAILS (N.T.S.)

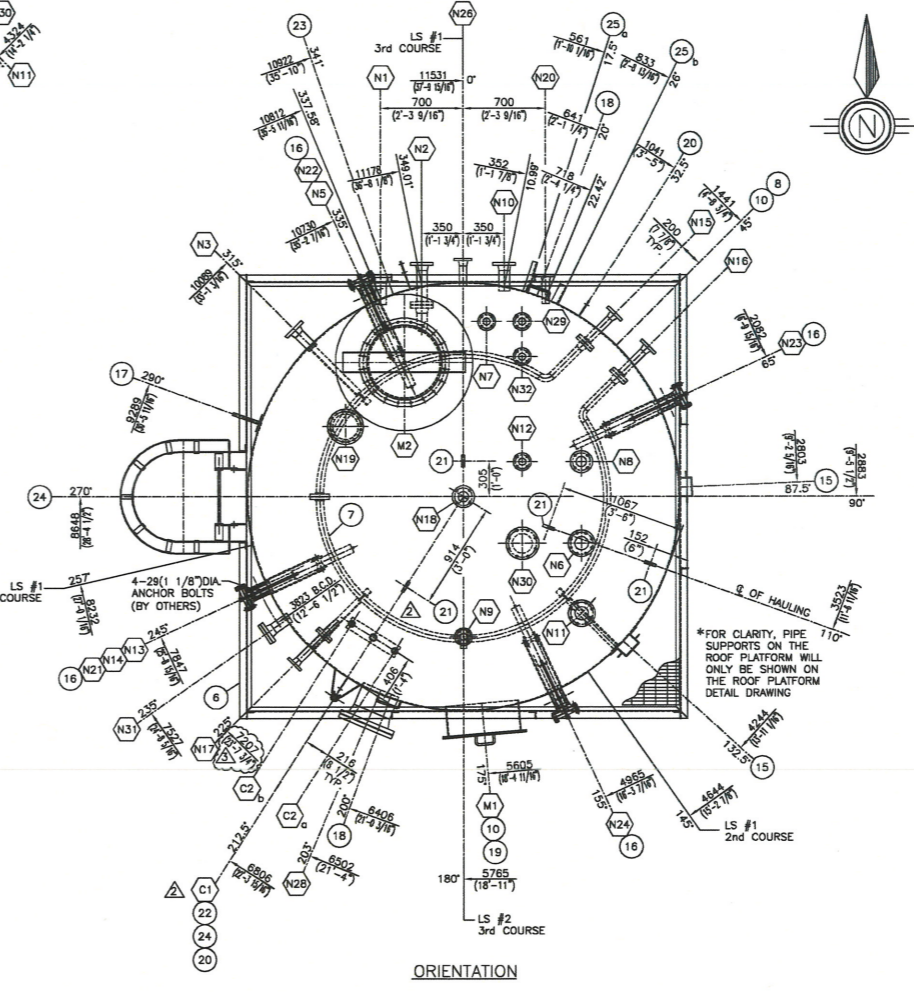
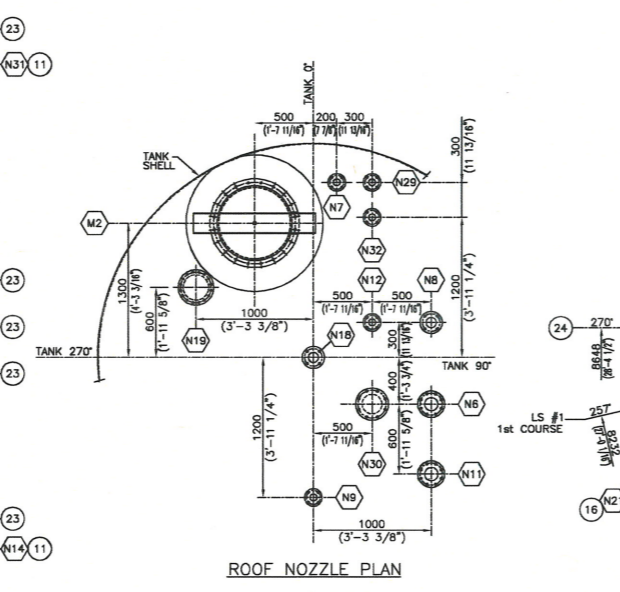
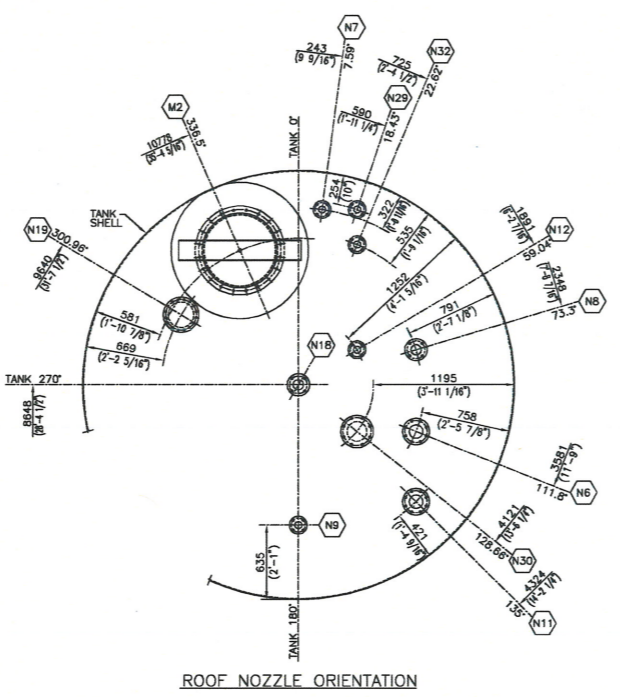
NOZZLE SCHEDULE

MATERIAL LIST



MK	NO	SIZE	SCH	RATE	TYPE	PROJECTION INT.	EXT.	REPAD YES	NO	DESCRIPTION	MK	QTY	PART NO.	DESCRIPTION	MATERIAL	WT
N1	1	89 3"	XS	CLASS 150	RFWN	25	1" 203 8"	✓		INLET	1	1	REF. DWG. B119	ROOF PLATE 3/16" THK. x 12'-5 7/8" FLAT DIA.	G40.21-30W F.G.P.	946
N2	1	89 3"	XS	CLASS 150	RFWN	152	6" 203 8"	✓		OUTLET TO RECYCLE PUMP C/W DOWNCOMER	2	1	REF. DWG. B118	FLOOR PLATE 5/16" THK. x 12'-6" DIA.	G40.21-30W F.G.P.	1566
N3	1	89 3"	XS	CLASS 150	RFWN	25	1" 203 8"	✓		TRUCK IN/OUT	3	1		SHELL PLATE 1/4" THK. x 8'-0" x 37'-9 1/8" LG.	G40.21-30W F.G.P.	3084
N5	1	89 3"	XS	CLASS 150	RFWN	25	1" 203 8"	✓		TG	4	1		SHELL PLATE 3/16" THK. x 8'-0" x 37'-8 15/16" LG.	G40.21-30W F.G.P.	2313
N6	1	114 4"	STD	CLASS 150	RFWN	25	1" 866 14W	✓		LIT #1	5	2		SHELL PLATE 3/16" THK. x 4'-0" x 18'-10 1/2" LG.	G40.21-30W F.G.P.	1157
N7	1	60 2"	STD	CLASS 150	RFWN	25	1" 874 14W	✓		PIT #2	6	1		ROOF PLATFORM 12'-1" x 12'-1" C/W SAFETY GATE		3904
N8	1	89 3"	STD	CLASS 150	RFWN	25	1" 857 14W	✓		FUEL GAS	7	1	REF. DWG. D104	HEAT COIL DETAIL		245
N9	1	60 2"	STD	CLASS 150	RFWN	25	1" 896 14W	✓		SPARE C/W BLIND	8	1	REF. DWG. A124	HEAT COIL NAMEPLATE		5
N10	1	89 3"	XS	CLASS 150	RFWN	25	1" 203 8"	✓		FLARE LIQUIDS IN	9	1		RUNAROUND ANGLE 2" x 2" x 3/16" x 36'-3 7/8" LG.	G40.21-44W	94
N11	1	114 4"	STD	CLASS 150	RFWN	25	1" 848 14W	✓		PVRV	10	2	2896	NAMEPLATE BRACKET		5
N12	1	60 2"	STD	CLASS 150	RFWN	25	1" 741 14W	✓		PG	11	1	SET REF. DWG. D102	NOZZLE DETAILS		1423
N13	1	60 2"	XS	CLASS 150	RFWN	25	1" 203 8"	✓		TE	12	1	REF. DWG. B105	SHELL MANWAY - 2'-0" x 3'-0" C/W 1/4" COVER & REPAD (ROUNDED TOP)		258
N14	1	89 3"	XS	CLASS 150	RFWN	25	1" 203 8"	✓		LEVEL MEASUREMENT #1 C/W BLIND	13	1	REF. DWG. B106	ROOF MANWAY - 24" API-650 C/W ENARDO EPRV MODEL 2000		384
N15	1	60 2"	XS	CLASS 300	RFWN	152	6" 203 8"	✓		HEATING COIL IN	14	1	REF. DWG. A120	THEIF HATCH NOZZLE C/W ENARDO 1000		96
N16	1	60 2"	XS	CLASS 300	RFWN	152	6" 203 8"	✓		HEATING COIL OUT	15	4	REF. DWG. A121	HAULING PAD (CAPPED, DEEP & WING STYLE)		256
N17	1	60 2"	XS	CLASS 300	RFWN	152	6" 203 8"	✓		WATER DRAW-OFF/DRAIN C/W DOWNCOMER	16	4	REF. DWG. A107	ANCHOR CHAIR		108
N18	1	89 3"	STD	CLASS 150	RFWN	25	1" 807 14W	✓		TANK VAPOR TO VRU	17	1	REF. DWG. A122	TAILING LUG C/W REPAD		36
N20	1	60 2"	XS	CLASS 150	RFWN	25	1" 203 8"	✓		FUEL GAS PURGE	18	2	4274	LIFTING LUG		302
N21	1	114 4"	XS	CLASS 150	RFWN	25	1" 203 8"	✓		SACRIFICIAL ANODE C/W CORRPRO ALUM. ANODE	19	1	1473	NAMEPLATE		1
N22	1	114 4"	XS	CLASS 150	RFWN	25	1" 203 8"	✓		SACRIFICIAL ANODE C/W CORRPRO ALUM. ANODE	20	2	4272	GROUNDING LUG		2
N23	1	114 4"	XS	CLASS 150	RFWN	25	1" 203 8"	✓		SACRIFICIAL ANODE C/W CORRPRO ALUM. ANODE	21	4	12753	TANK ROOF SAFETY HARNESS LUG		8
N24	1	114 4"	XS	CLASS 150	RFWN	25	1" 203 8"	✓		SACRIFICIAL ANODE C/W CORRPRO ALUM. ANODE	22	1	REF. DWG. A120	VAREC 2500 AUTOMATIC TANK GAUGE C/W B200 CURRENT OUTPUT TRANSMITTER		111
N26	1	60 2"	XS	CLASS 150	RFWN	25	1" 203 8"	✓		PRODUCED WATER INLET	23	5	REF. DWG. B108	CABLE TRAY CLIPS		53
N28	1	324 12"	XS	CLASS 150	RFWN	25	1" 279 11"	✓		VACUUM HOSE INSPECTION NOZZLE C/W BLIND	24	1	REF. DWG. D110	LADDER C/W CAGE		535
N29	1	60 2"	STD	CLASS 150	RFWN	25	1" 991 14W	✓		PRESS AND TRANSMITTER #2	25	2	REF. DWG. B114	SHELL PIPE SUPPORT DETAILS		14
N30	1	168 6"	STD	CLASS 150	RFWN	25	1" 756 14W	✓		LEVEL AND TRANSMITTER #2 C/W BLIND	26					
N31	1	89 3"	XS	CLASS 150	RFWN	25	1" 203 8"	✓		LEVEL MEASUREMENT #2 C/W BLIND	27					
N32	1	60 2"	STD	CLASS 150	RFWN	25	1" 921 14W	✓		PRESSURE CONNECTION	28					
C1	1	38 1 1/2"	-	3000#	SS LONG C/PLG	HALF	HALF	✓		WREC GAUGE LEVEL (WREC 2500) C/W B200 CURRENT OUTPUT TRANSMITTER	29					
C2	2	32 1 1/4"	-	3000#	SS LONG C/PLG	HALF	HALF	✓		GAUGE FLOAT GUIDEWIRES	30					
N19	1	219 8"	STD	-	FAB'D	25	1" 887 14W	✓		THEIF HATCH C/W ENARDO 1000	31					
M1	1	610 24"	-	API	FAB'D	25	1" 203 8"	✓		SHELL MANWAY C/W COVER	32					
M2	1	610 24"	-	API	FAB'D	25	1" 203 8"	✓		ROOF MANWAY C/W EPRV	33					

SUBTOTAL 18406 x 1.06 TOTAL lbs. 19510



NOTES:
 1. ALL DIMENSIONS ARE IN S.I. AND IMPERIAL UNITS. DIMENSIONS IN BRACKETS ARE IMPERIAL HARD CONVERSIONS FOR SHOP REFERENCE ONLY.
 2. SEE DWG. T-028978-D101 SHT.2 FOR DESIGN DATA.



NO.	DATE (d/m/y)	REVISIONS	BY	APPD
07/03/14		AS-BUILT, REVISED N17 CIRC DIMENSION, REVISED N11 TO RFWN & ADDED REPAD TO N31	WT	JK
08/10/13		RELOCATED LEVEL GAUGE COMPONENTS FROM 300 DEGREES TO 212.5 DEGREES DUE TO ROOF PLATFORM INTERFERENCE	JS	JK
19/09/13		REVISED SHELL COURSE #3 PLATE LENGTHS (MK#5)	JS	JK
28/08/13		ISSUED FOR CONSTRUCTION	VDT	JK
04/07/13		RE-ISSUED FOR CUSTOMER APPROVAL	RMG	JK
09/05/13		ISSUED FOR CUSTOMER APPROVAL	VDT	JK

THIS DRAWING IS THE PROPERTY OF FOREMOST UNIVERSAL LP AND IS TO BE USED ONLY IN CONJUNCTION WITH PERFORMANCE OF WORK BY FOREMOST UNIVERSAL LP. REPRODUCTION OR USE OF IN WHOLE OR IN PART FOR ANY OTHER PURPOSE IS EXPRESSLY FORBIDDEN.



CLIENT	DEVON CANADA C/O WORLEYPARSONS LIQUID EXTRACTION PLANT, LSD: 11-2-39-08 W5M P.O. # 4100001170		
DWG TITLE	SLOP OIL TANK, TAG# 002-T-08-1118 GENERAL ARRANGEMENT		
SIZE	3658mm I.D. x 6096mm HIGH (12'-0" I.D. x 20'-0" HIGH)	VOLUME	84 CU. METERS (400 Bbl) NOM.
SCALE	1:30	DWN BY	V. TUGUNAY
DATE (d/m/y)	07/05/13	CHRD TWA	07/03/14
		APPD JK	07/03/14
		DWG NO.	T-028978-D101
		SHEET NO. REV. NO.	1 of 2