

002-EF-01-1211/1212
EXHAUST FANS

MAKE: RUFFNECK
MODEL: 3ACPH: EFX-12A-2HP
MODEL: 9ACPH: EFX-16A-2HP

002-EFM-01-1211/1212
EXHAUST FAN MOTORS

MAKE: RUFFNECK
MODEL: 3ACPH: 575/3/60 - 1/2HP - 850CFM - T38 MOTOR
MODEL: 9ACPH: 575/3/60 - 1/2HP - 1825CFM - T38 MOTOR

002-V-01-1210
CARDIUM INLET SEPARATOR

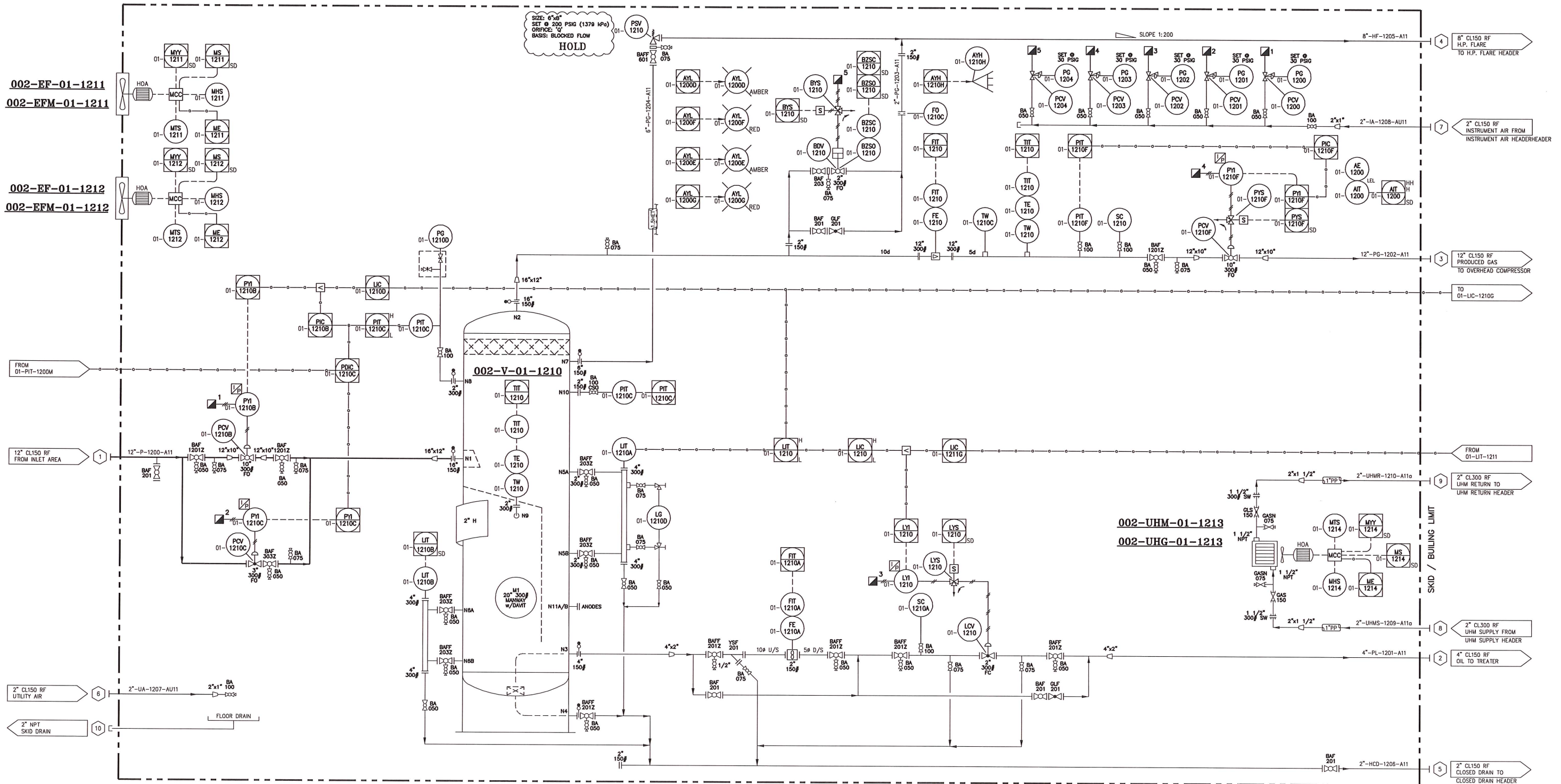
SIZE: 66" I.D. x 12'-0" S/S
(1,676mm I.D. x 3,658mm S/S)
MAWP: 200 PSIG @ -20/302°F / FV @ 302°F
(1,379 kPa_g @ -29/150°C)
CA: 0.125" (3mm)

002-UHG-01-1213
BUILDING HEATERS

MAKE: RUFFNECK
MODEL: AH-24A-A7A1-A1-2H
DUTY: 0.5 HP
575 / 3PH / 60Hz

002-UHM-01-1213
BUILDING HEATER MOTOR

MAKE: RUFFNECK
MODEL: T38 MOTOR - 20" FAN
CLASS 1D1V1&11 GROUP C&D



NOTE:
- ALL TRANSMITTERS AND SWITCHES ARE WIRED TO SKID EDGE JUNCTION BOX BY 5BLUE
- REMOTE CONTROL AND MONITORING TO BE BY CUSTOMER

A ISSUED FOR APPROVAL		BS	15/05/13
NO.	REVISION	BY	DATE

www.5Blue.com

CUSTOMER: DEVON NEC CORPORATION
PROJECT: FERRIER CENTRAL PROCESSING FACILITY
CENTRAL OIL BATTERY - SEPARATION & TREATMENT
TITLE: CARDIUM INLET SEPARATOR PACKAGE (002-PK-01-1200)
P&ID

JOB NO. 5B1108-02
DATE: 09/05/13
DWG NO. 5B1108-02-DR-00-001