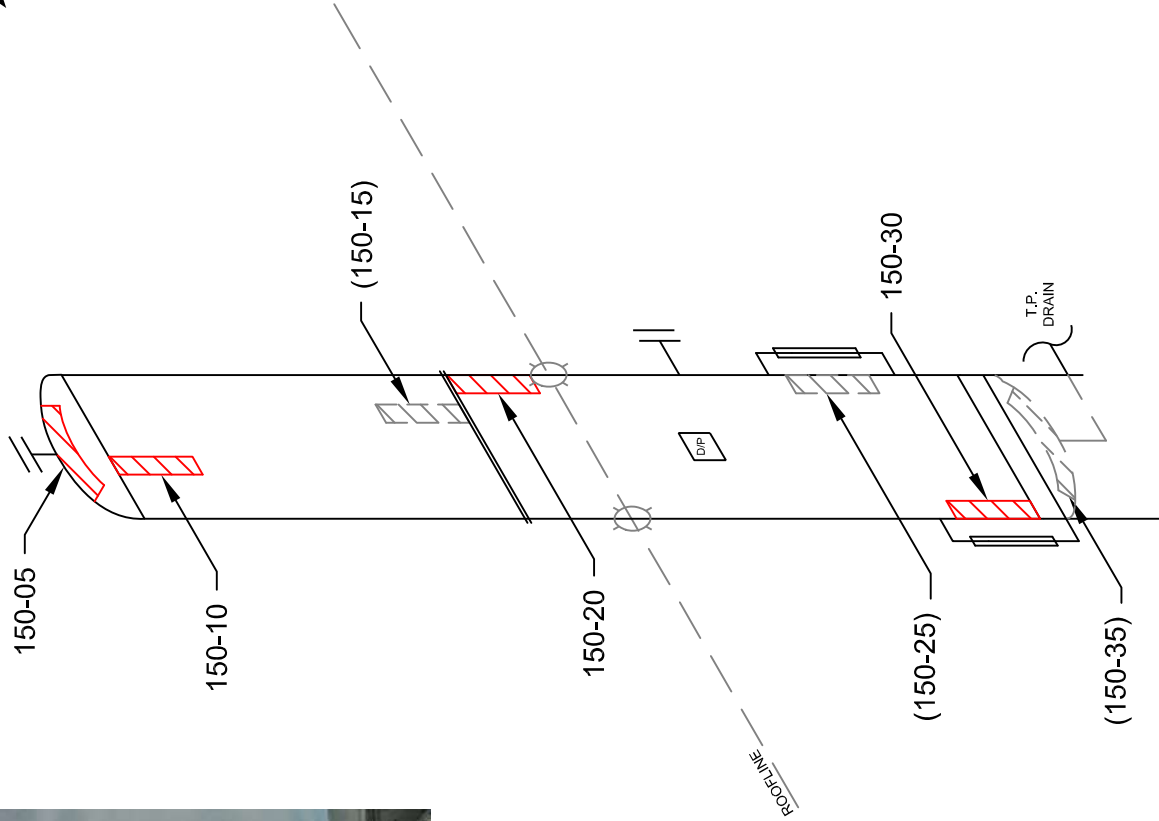


ITEM: A 2724111

CONTACTOR



STETTLER, AB (403) 742-4868
LACOMBE, AB (403) 782-7855
BROOKS, AB (403) 501-8029
GRANDE PRAIRIE, AB (866) 422-9732

TECHNICIAN:

GLENN ALLEN
SNT LEVEL II
CGSB 48.9712
LEVEL II # 9738

DATE: 02/28/08

DWG # 150

CLIENT: TALISMAN ENERGY LTD.

LSD: 13-17-074-07-W6M

INSPECTOR: DUANE PAETKAU

LOCATION: TEEPEE CREEK FIELD

DISTRICT UNIT: GPOU

BLDG/SKID: SKD 0623

PROCESS: SWEET

CODE: ASME SEC VIII DIV 1

SPECIFICATION: AS PER ASME SE 797

TECHNIQUE: UT-1-1, REV. 1

METHOD: UT CONTINUOUS / A SCAN

SURFACE COND: PAINTED

SURFACE TEMP: AMBIENT

VESSEL INFORMATION

VESSEL #: A 2724111

CRN #: K3932.2

SERIAL #: FV-12-14-1776-2

MANUFACTURER: OPSCO

DATE BUILT: 1991

CLIENT ID / TAG: -

M.A.W.P.: 1440 PSI

M.A.W.T.: 100 °F

JOINT EFFICIENCY/RT: RT 2

STRESS RELIEVED: NO

INSULATED: TOP HALF

MANWAY: NO

VESSEL SPECIFICATIONS

	OD	NOMINAL	MATERIAL	CA
VESSEL HEAD	12.75"	1.00"	SA-516-70	.063"
VESSEL SHELL	12.75"	.844"	SA-106-B	.063"
BOOT HEAD	-	-	-	-
BOOT SHELL	-	-	-	-

COMMENTS:

FITTED DRAIN

PROJECT:

C10178