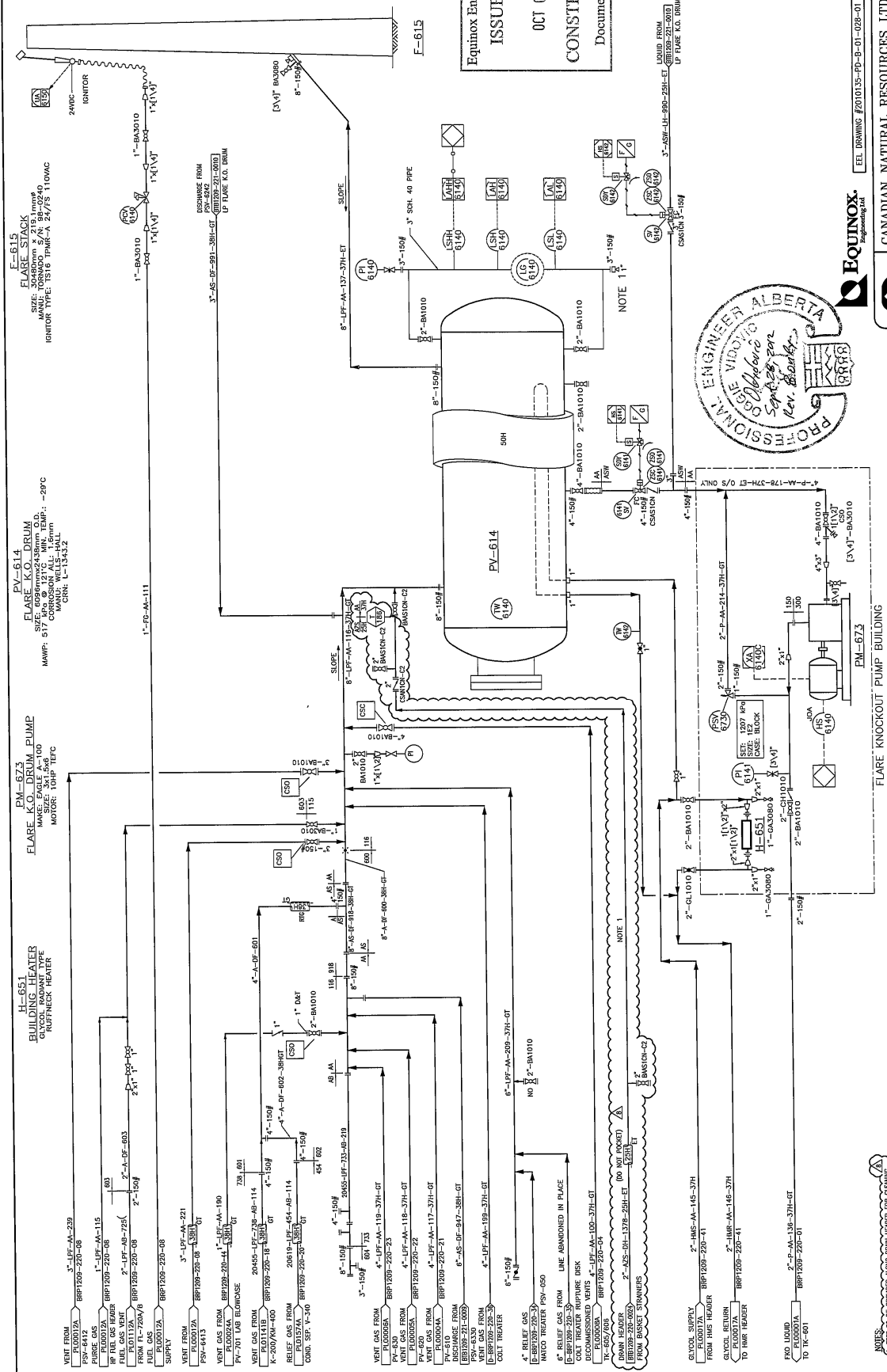


CADD DWG - DO NOT MANUALLY CHANGE

Equinox Engineering Ltd.
ISSUED FOR
 OCT 0 2012
CONSTRUCTION
 Document Control



H-651 BUILDING HEATER
 GASEOUS HEATER
 MAKE: EAGLE A-100
 SIZE: 24" X 120"
 MOTOR: 1HP 115V

PM-673 FLARE KNOCKOUT PUMP
 MAKE: EAGLE A-100
 SIZE: 24" X 120"
 MOTOR: 1HP 115V

PV-614 FLARE K.O. DRUM
 SIZE: 60" DIA X 54" H
 MAKE: TOSHIBA
 MOTOR: 1/2 HP 230V
 CORROSION: ALL 15mm
 MACH: U-13432

E-615 FLARE STACK
 SIZE: 24" DIA X 54" H
 MAKE: TOSHIBA
 MOTOR: 1/2 HP 230V
 CORROSION: ALL 15mm
 MACH: U-13432



EQUINOX
 Canadian Natural
 CANADIAN NATURAL RESOURCES LTD.
 2500, 855 - 2nd STREET S.W. CALGARY, AB. T2P 4J8
 PHONE (403) 517-5700 FAX (403) 517-7350
 DRAWING #2010135-PD-B-01-02B-01
 PROJECT: FLARE SYSTEM PIPING AND INSTRUMENTATION DIAGRAM
 SHEET: PLO0013A

DATE	BY	DESCRIPTION
10/02/12	SS	ISSUED FOR CONSTRUCTION
09/27/12	SS	REVISION 1
09/27/12	SS	REVISION 2
09/27/12	SS	REVISION 3
09/27/12	SS	REVISION 4
09/27/12	SS	REVISION 5
09/27/12	SS	REVISION 6
09/27/12	SS	REVISION 7
09/27/12	SS	REVISION 8

PERMIT TO PRACTICE
 EQUINOX ENGINEERING LTD.
 PERMIT NUMBER: P 8608
 (The Association of Professional Engineers of Alberta)
 APPROVED ABOVE SHALL APPLY ONLY TO REVISION 8

NOTES:
 1. CONSULT THE FLARE GAS BURNER (F-614) DRAWING.
 2. CONSULT THE FLARE GAS BURNER (F-614) DRAWING.
 3. CONSULT THE FLARE GAS BURNER (F-614) DRAWING.

CAUTION - READ BEFORE EXCAVATION
 NOT WITHSTANDING INFORMATION PROVIDED BY THIS DRAWING, THE CONTRACTOR SHALL BE RESPONSIBLE FOR VERIFYING THE LOCATION OF ALL UTILITIES PRIOR TO HAND EXCAVATION. ONCE ALL UNDERGROUND UTILITIES HAVE BEEN IDENTIFIED AND MARKED, THE CONTRACTOR SHALL BE RESPONSIBLE FOR VERIFYING THE LOCATION OF ALL UTILITIES PRIOR TO HAND EXCAVATION. THE CONTRACTOR SHALL BE RESPONSIBLE FOR VERIFYING THE LOCATION OF ALL UTILITIES PRIOR TO HAND EXCAVATION. THE CONTRACTOR SHALL BE RESPONSIBLE FOR VERIFYING THE LOCATION OF ALL UTILITIES PRIOR TO HAND EXCAVATION.

CAUTION - READ BEFORE EXCAVATION
 NOT WITHSTANDING INFORMATION PROVIDED BY THIS DRAWING, THE CONTRACTOR SHALL BE RESPONSIBLE FOR VERIFYING THE LOCATION OF ALL UTILITIES PRIOR TO HAND EXCAVATION. ONCE ALL UNDERGROUND UTILITIES HAVE BEEN IDENTIFIED AND MARKED, THE CONTRACTOR SHALL BE RESPONSIBLE FOR VERIFYING THE LOCATION OF ALL UTILITIES PRIOR TO HAND EXCAVATION. THE CONTRACTOR SHALL BE RESPONSIBLE FOR VERIFYING THE LOCATION OF ALL UTILITIES PRIOR TO HAND EXCAVATION. THE CONTRACTOR SHALL BE RESPONSIBLE FOR VERIFYING THE LOCATION OF ALL UTILITIES PRIOR TO HAND EXCAVATION.

CAUTION - READ BEFORE EXCAVATION
 NOT WITHSTANDING INFORMATION PROVIDED BY THIS DRAWING, THE CONTRACTOR SHALL BE RESPONSIBLE FOR VERIFYING THE LOCATION OF ALL UTILITIES PRIOR TO HAND EXCAVATION. ONCE ALL UNDERGROUND UTILITIES HAVE BEEN IDENTIFIED AND MARKED, THE CONTRACTOR SHALL BE RESPONSIBLE FOR VERIFYING THE LOCATION OF ALL UTILITIES PRIOR TO HAND EXCAVATION. THE CONTRACTOR SHALL BE RESPONSIBLE FOR VERIFYING THE LOCATION OF ALL UTILITIES PRIOR TO HAND EXCAVATION. THE CONTRACTOR SHALL BE RESPONSIBLE FOR VERIFYING THE LOCATION OF ALL UTILITIES PRIOR TO HAND EXCAVATION.