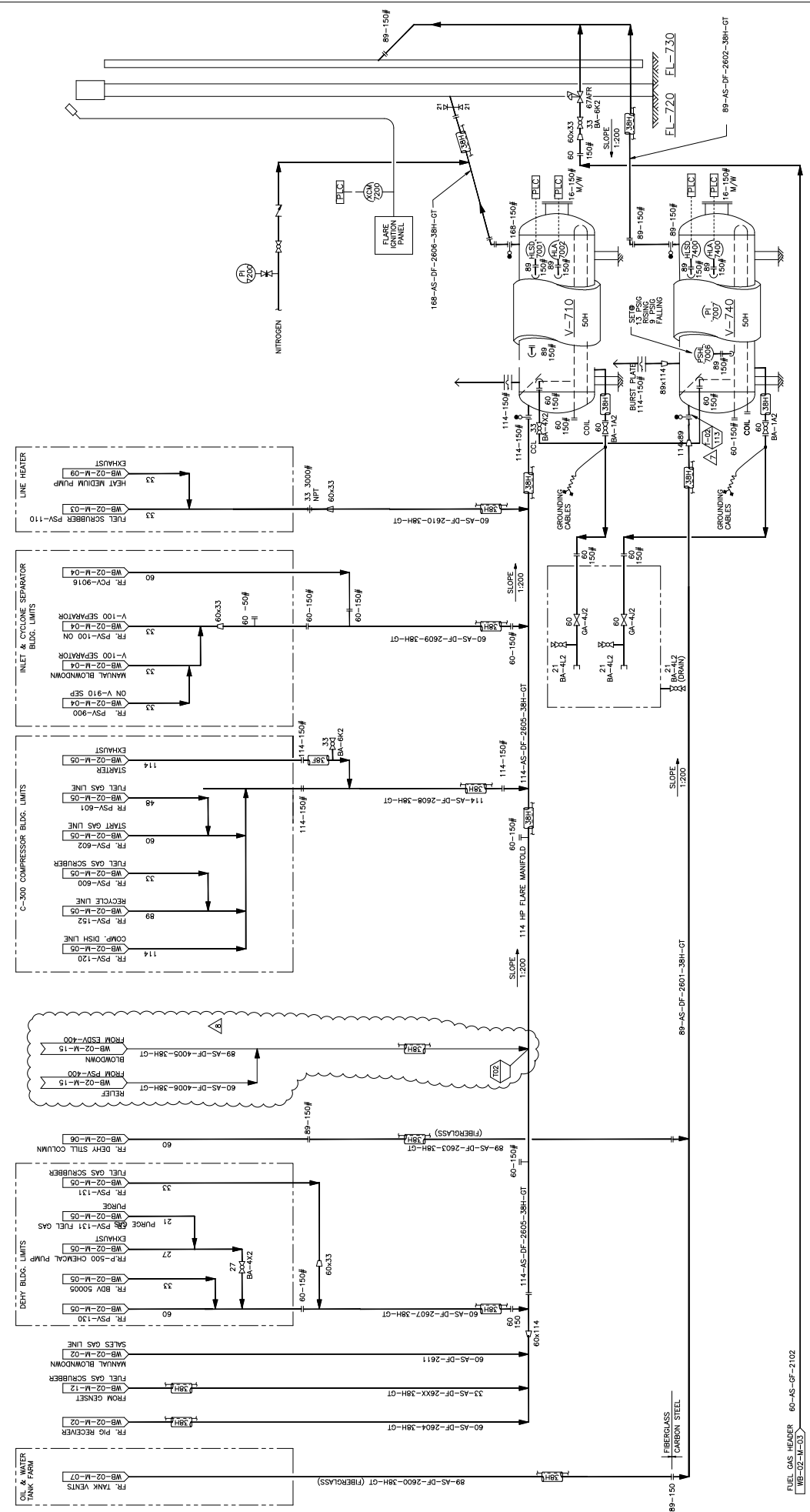


**HP FLARE STACK
FL-720**
SIZE: 168mm (6") OD SCH 40
x 15.2m (50') LONG
C/W 12 VDC BATTERY PACK
AND BATTERY PACK/SOLAR PANEL

**V-740
LP K.O. DRUM**
SIZE: 914mm (3'-00") OD x 3048mm (10'-00")
C/W 12 VDC BATTERY PACK
AND BATTERY PACK/SOLAR PANEL

**V-710
H.P. K.O. DRUM**
SIZE: 914mm (3'-00") OD x 3048mm (10'-00")
C/W 12 VDC BATTERY PACK
AND BATTERY PACK/SOLAR PANEL

**FL-730
LP FLARE STACK**
SIZE: 89mm (3 1/2") OD SCH. 40
x 15.2m (50') LONG
C/W 12 VDC BATTERY PACK
AND BATTERY PACK/SOLAR PANEL



REV. 6

Macdonald Engineering Group Ltd. CALGARY ALBERTA CANADA

Tundra

NOTES

- NEXT AVAILABLE TAG #7008
- OPTIONAL TE-IN FROM FKOD PUMP OUT

A1-WB-02-M-08

Anatoko! Canada Corporation
WEST BLUEBERRY
LSD 12-29-88-25 W6M
HIGH & LOW PRESSURE FLARE SYSTEM
MECHANICAL DRAWING

SCALE: N.T.S. BLM/229-220-0002

REV	8
DATE	98.03.10
BY	J.W. JMC/CHK
CHECKED	A.B.M.
APPROVED	J.M.C.
DRAWN	J.M.C.

NO	DATE	CHD	APPD
6	02.07.11	DS	BB
7	02.02.23	EJG	BB
8	02.12.16	SNW	BB
1	98.06.30	FW	MK
2	98.10.01	FW	MK
3	98.10.20	WRM	MK
4	98.06.11	FW	MK
5	98.09.14	J.W.	M.K.

ENGINEERS & PERMIT STAMPS

NO	REVISION DESCRIPTION	BY	DATE	CHD	APPD
6	6 CANCELLED	NRM	02.07.11	DS	BB
7	7 CANCELLED	EJG	02.02.23		
8	ISSUED FOR CONSTRUCTION (2002 EXPANSION) MEQ 013008	GD	02.12.16	SNW	BB
1	ADDED PSV FROM CYCLONE, PURGE GAS FR. DISCHARGE ESD	CDC	98.06.30	FW	MK
2	AS BUILT (AS PER HYLAND OILFIELD)	FW	98.10.01		
3	AS BUILT (NCSL)	WRM	98.10.20		
4	ISSUED FOR CONSTRUCTION - ADDED GENSET	FW	98.06.11		
5	AS BUILT (WRM MARK-UP - Northern Drafting Services Ltd.)	J.W.	98.09.14		

REFERENCE DRAWINGS

SELF SUPPORTED FLARE STACK
36" ID x 10' KNOCK OUT DRUM
36" ID x 10' KNOCK OUT DRUM

REVISIONS

98023 98005

98023 98005

DATE: 98.03.10
BY: J.W.
CHECKED: A.B.M.
APPROVED: J.M.C.