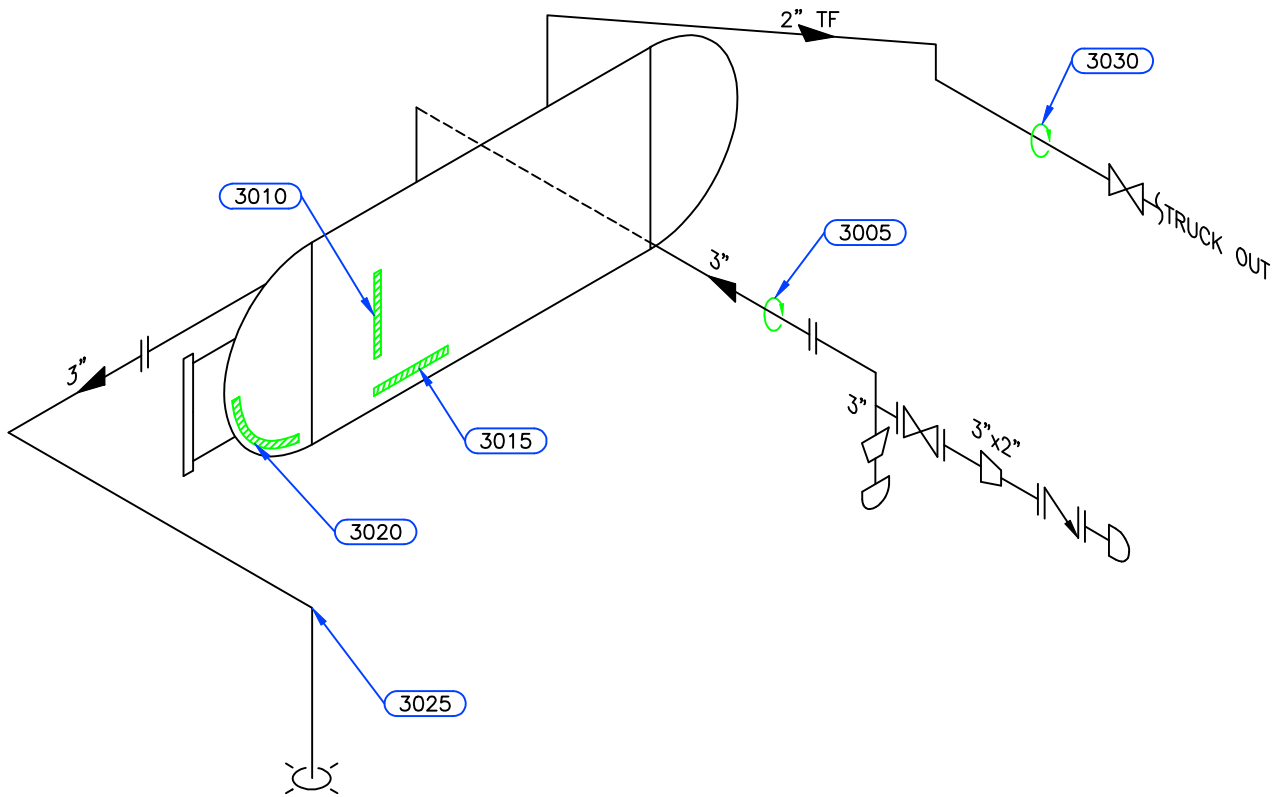


**PSV DATA**

MFG: TAYLOR  
 MODEL: T-8200-2  
 SERIAL: 50141-21  
 SET PRES: 103 kPa  
 CAPACITY: 222 scfm  
 SERVICED BY: PIMM'S  
 SERVICE DATE: 02/2010  
 SIZE: 2" x 2"  
 CODE STAMP: UV/NB  
 BLOCK VALVE: NO  
 CRN: OG-1316.2C  
 LOCATION: TOP SHELL  
 TAG: N/S



NO DATA PLATE

Equip. No. \_\_\_\_\_ Prov. Reg. No. **Ⓐ C 35006** C.R.N. **NON CODE** Serial No. \_\_\_\_\_ Yr. Inst. \_\_\_\_\_  
 Code/Div. **NON CODE** Size: **30in x 60in** Manufacturer: **TORNADO** Yr. Blt. \_\_\_\_\_  
 C. Stamp: \_\_\_\_\_ Service: **SOUR** PWHT: **NIL** Radiography: **NIL** Insulated: **NO**

**Design & Materials Data**

**HEAD:**  
 Top Mat'l. **SA 36** Top Nom. **6.4mm** Top C.A. **1.6mm**  
 Btm. Mat'l. \_\_\_\_\_ Btm. Nom. \_\_\_\_\_ Btm. C.A. \_\_\_\_\_  
**CHANNEL:**  
 Material: \_\_\_\_\_ Nominal: \_\_\_\_\_ C.A. \_\_\_\_\_  
**BOOT**  
 Head Mat'l. \_\_\_\_\_ Head Nom. \_\_\_\_\_ Head C.A. \_\_\_\_\_  
 Shell Mat'l. \_\_\_\_\_ Shell Nom. \_\_\_\_\_ Shell C.A. \_\_\_\_\_  
**SHELL**  
 Material: **SA 36** Nominal: **9.5mm** C.A. **1.6mm**  
 MAWP Shell Side: **ATMOS** @ Temp. \_\_\_\_\_  
 MAWP Tube Side: \_\_\_\_\_ @ Temp. \_\_\_\_\_

|           |   |          |
|-----------|---|----------|
| CLIENT    | CANADIAN NATURAL RESOURCES LTD                      |          |
| FACILITY  | CURRANT<br>COMPRESSOR STATION<br>LSD b-09-C/94-A-16 |          |
| ITEM      | FLARE<br>KNOCKOUT DRUM                              |          |
| BY: DK/CK | DATE: 08/2011                                       | DWG.# 30 |



