

T-380
 GLYCOL RECIRCULATOR
 SIZE: 610mm O.D. x 854mm S/S
 DESIGN PRESS: 9673 kPa @ -29/54°C, 3.2mm C.A.
 C/W 3-PHASE INTEGRAL SCRUBBER
 3RD PHASE PLUGGED

E-381
 GAS/GLYCOL EXCHANGER
 SIZE: 114mm O.D. x 188mm x 3048mm LG.
 DESIGN PRESS: 10204 kPa @ -29/35°C + 0mm C.A.

P-383
 GLYCOL PUMP
 MODEL: ROTOR-TECH QAS-E1-50
 1.5 HP, 1725 RPM, 460V/3PH/60HZ
 0.6 USGPM @ 10542 kPa (MAX), 103P MOTOR

V-387
 FUEL GAS SCRUBBER
 MODEL: ALCO #C-178
 SIZE: 273mm O.D. x 737mm
 DESIGN PRESS: 1034 kPa @ 68°C

E-385
 GLYCOL FILTER
 CUNO 182 GLYCOL FILTER
 25 MICRON CARTRIDGE
 DESIGN PRESS: 1034 kPa @ 29/121°C

FL-386
 CHARCOAL FILTER
 CUNO 182 GLYCOL FILTER
 CHARCOAL ELEMENT
 DESIGN PRESS: 1724 kPa @ 29/121°C

B-389/B-389
 GLYCOL RECIRCULATOR
 MODEL: ALCO #R230AR210
 SIZE: 610mm O.D. x 1968mm LG. RECOILER
 100% SAFETY SHUT-OFF START
 2.0mm O.D. FIRE TUBE PER C.A. MARK
 2.0mm O.D. x 3048mm LG. STILL COLUMN
 2.0mm O.D. x 3048mm LG. 5" STRIPING COILS
 20000 BTU/Hr x 2.0mm C.A.

BUILDING HEATER
 12,000 BTU X.P. GALVANIC W/ PROTECTIVE GRILL
 100% SAFETY SHUT-OFF START
 3.0" O.D. BATTERY CABLES

H-388
 BUILDING HEATER
 12,000 BTU X.P. GALVANIC W/ PROTECTIVE GRILL
 100% SAFETY SHUT-OFF START
 3.0" O.D. BATTERY CABLES

FL-385
 GLYCOL FILTER
 CUNO 182 GLYCOL FILTER
 25 MICRON CARTRIDGE
 DESIGN PRESS: 1034 kPa @ 29/121°C

V-387
 FUEL GAS SCRUBBER
 MODEL: ALCO #C-178
 SIZE: 273mm O.D. x 737mm
 DESIGN PRESS: 1034 kPa @ 68°C

E-381
 GAS/GLYCOL EXCHANGER
 SIZE: 114mm O.D. x 188mm x 3048mm LG.
 DESIGN PRESS: 10204 kPa @ -29/35°C + 0mm C.A.

P-383
 GLYCOL PUMP
 MODEL: ROTOR-TECH QAS-E1-50
 1.5 HP, 1725 RPM, 460V/3PH/60HZ
 0.6 USGPM @ 10542 kPa (MAX), 103P MOTOR

V-387
 FUEL GAS SCRUBBER
 MODEL: ALCO #C-178
 SIZE: 273mm O.D. x 737mm
 DESIGN PRESS: 1034 kPa @ 68°C

E-385
 GLYCOL FILTER
 CUNO 182 GLYCOL FILTER
 25 MICRON CARTRIDGE
 DESIGN PRESS: 1034 kPa @ 29/121°C

FL-386
 CHARCOAL FILTER
 CUNO 182 GLYCOL FILTER
 CHARCOAL ELEMENT
 DESIGN PRESS: 1724 kPa @ 29/121°C

B-389/B-389
 GLYCOL RECIRCULATOR
 MODEL: ALCO #R230AR210
 SIZE: 610mm O.D. x 1968mm LG. RECOILER
 100% SAFETY SHUT-OFF START
 2.0mm O.D. FIRE TUBE PER C.A. MARK
 2.0mm O.D. x 3048mm LG. STILL COLUMN
 2.0mm O.D. x 3048mm LG. 5" STRIPING COILS
 20000 BTU/Hr x 2.0mm C.A.

BUILDING HEATER
 12,000 BTU X.P. GALVANIC W/ PROTECTIVE GRILL
 100% SAFETY SHUT-OFF START
 3.0" O.D. BATTERY CABLES

H-388
 BUILDING HEATER
 12,000 BTU X.P. GALVANIC W/ PROTECTIVE GRILL
 100% SAFETY SHUT-OFF START
 3.0" O.D. BATTERY CABLES

FL-385
 GLYCOL FILTER
 CUNO 182 GLYCOL FILTER
 25 MICRON CARTRIDGE
 DESIGN PRESS: 1034 kPa @ 29/121°C

V-387
 FUEL GAS SCRUBBER
 MODEL: ALCO #C-178
 SIZE: 273mm O.D. x 737mm
 DESIGN PRESS: 1034 kPa @ 68°C

E-381
 GAS/GLYCOL EXCHANGER
 SIZE: 114mm O.D. x 188mm x 3048mm LG.
 DESIGN PRESS: 10204 kPa @ -29/35°C + 0mm C.A.

P-383
 GLYCOL PUMP
 MODEL: ROTOR-TECH QAS-E1-50
 1.5 HP, 1725 RPM, 460V/3PH/60HZ
 0.6 USGPM @ 10542 kPa (MAX), 103P MOTOR

V-387
 FUEL GAS SCRUBBER
 MODEL: ALCO #C-178
 SIZE: 273mm O.D. x 737mm
 DESIGN PRESS: 1034 kPa @ 68°C

E-385
 GLYCOL FILTER
 CUNO 182 GLYCOL FILTER
 25 MICRON CARTRIDGE
 DESIGN PRESS: 1034 kPa @ 29/121°C

FL-386
 CHARCOAL FILTER
 CUNO 182 GLYCOL FILTER
 CHARCOAL ELEMENT
 DESIGN PRESS: 1724 kPa @ 29/121°C

B-389/B-389
 GLYCOL RECIRCULATOR
 MODEL: ALCO #R230AR210
 SIZE: 610mm O.D. x 1968mm LG. RECOILER
 100% SAFETY SHUT-OFF START
 2.0mm O.D. FIRE TUBE PER C.A. MARK
 2.0mm O.D. x 3048mm LG. STILL COLUMN
 2.0mm O.D. x 3048mm LG. 5" STRIPING COILS
 20000 BTU/Hr x 2.0mm C.A.

BUILDING HEATER
 12,000 BTU X.P. GALVANIC W/ PROTECTIVE GRILL
 100% SAFETY SHUT-OFF START
 3.0" O.D. BATTERY CABLES

H-388
 BUILDING HEATER
 12,000 BTU X.P. GALVANIC W/ PROTECTIVE GRILL
 100% SAFETY SHUT-OFF START
 3.0" O.D. BATTERY CABLES

FL-385
 GLYCOL FILTER
 CUNO 182 GLYCOL FILTER
 25 MICRON CARTRIDGE
 DESIGN PRESS: 1034 kPa @ 29/121°C

V-387
 FUEL GAS SCRUBBER
 MODEL: ALCO #C-178
 SIZE: 273mm O.D. x 737mm
 DESIGN PRESS: 1034 kPa @ 68°C

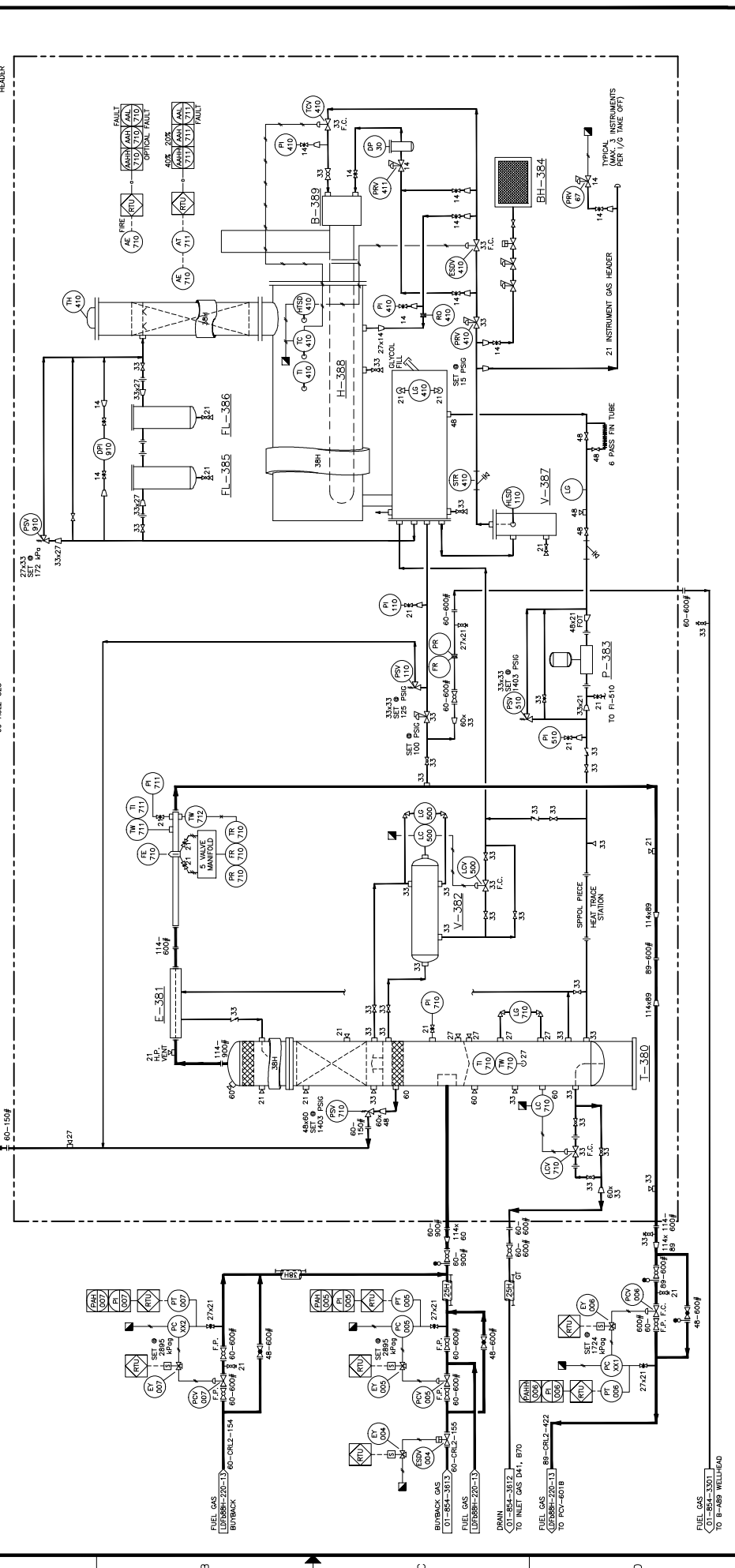
E-381
 GAS/GLYCOL EXCHANGER
 SIZE: 114mm O.D. x 188mm x 3048mm LG.
 DESIGN PRESS: 10204 kPa @ -29/35°C + 0mm C.A.

P-383
 GLYCOL PUMP
 MODEL: ROTOR-TECH QAS-E1-50
 1.5 HP, 1725 RPM, 460V/3PH/60HZ
 0.6 USGPM @ 10542 kPa (MAX), 103P MOTOR

V-387
 FUEL GAS SCRUBBER
 MODEL: ALCO #C-178
 SIZE: 273mm O.D. x 737mm
 DESIGN PRESS: 1034 kPa @ 68°C

E-385
 GLYCOL FILTER
 CUNO 182 GLYCOL FILTER
 25 MICRON CARTRIDGE
 DESIGN PRESS: 1034 kPa @ 29/121°C

FL-386
 CHARCOAL FILTER
 CUNO 182 GLYCOL FILTER
 CHARCOAL ELEMENT
 DESIGN PRESS: 1724 kPa @ 29/121°C



		REDLINE DRAFTING INC.	
DRAWN BY: _____ DESIGNED BY: _____ CHECKED BY: _____ APPROVED BY: _____ CLIENT BY: _____	DATE: 2009-10-28 DATE: _____ DATE: _____ DATE: _____	TITLE: LADYFERN SCREW COMPRESSION P-88-H PIPING & INSTRUMENTATION DIAGRAM	SCALE: _____ JOB NO.: _____ N.T.S.
DRAWING NO.: _____ REV. 0	DRAWING NO.: _____ REV. 0	REFERENCE DRAWINGS: _____	REDLINE DRAFTING INC.