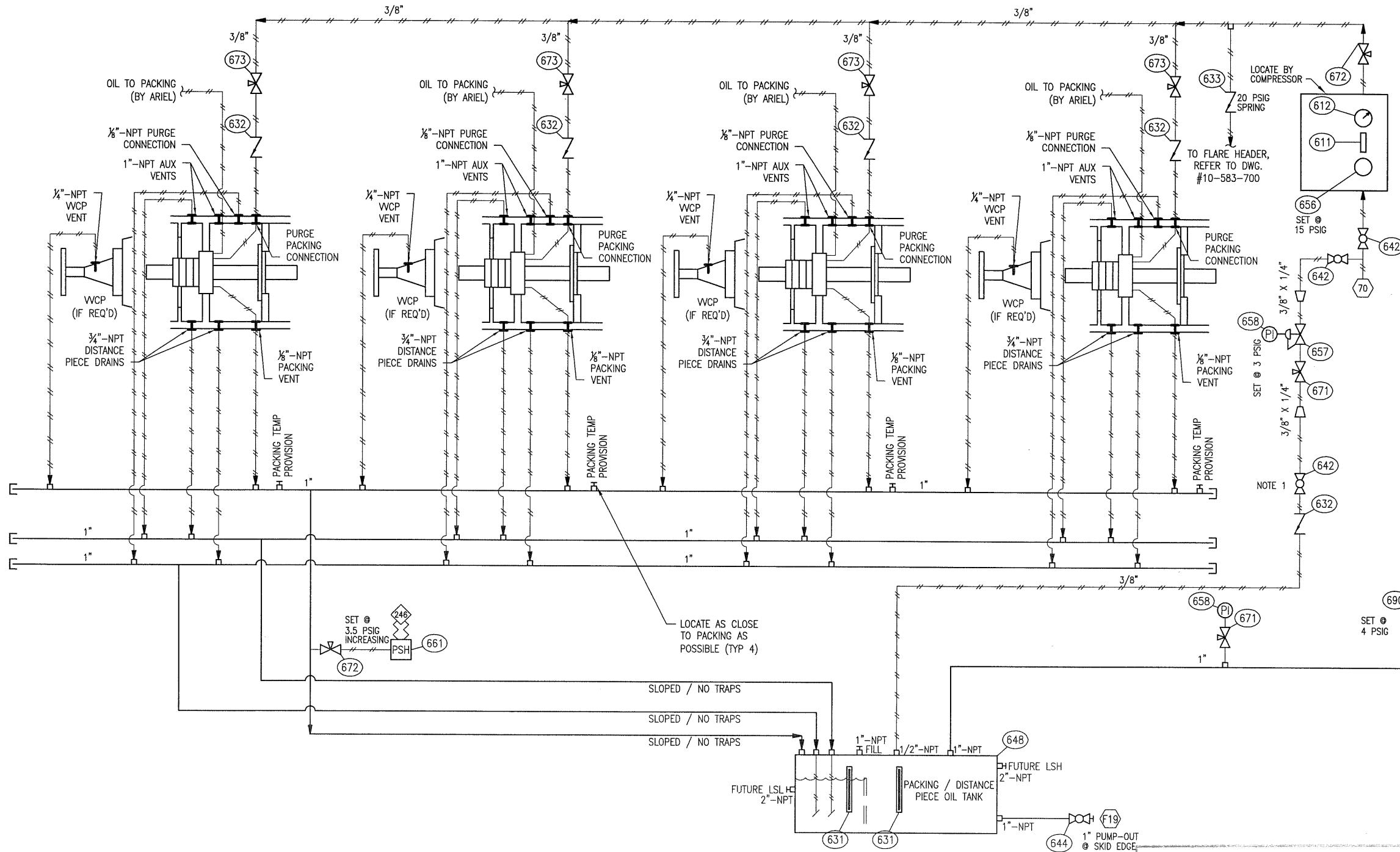


THIS DRAWING IS SOLE PROPERTY OF BIDELE EQUIPMENT AND SHALL NOT BE REPRODUCED, COPIED, LENT, ALTERED NOR USED FOR ANY PURPOSE OTHER THAN WHICH IT IS FURNISHED EXCEPT WITH THE WRITTEN PERMISSION OF BIDELE EQUIPMENT



BILL OF MATERIALS			
MK	QTY	PART NUMBER	DESCRIPTION
611	1	FMR-999	FLOW METER, 1/4"-NPT, "HEDLAND" MODEL H271A-005, 1000 PSIG MAWP, 0.5 TO 5 SCFM, ALUMINUM
612	1	PI-25-0030P	INDICATOR, PRESS, "WGI" MODEL WJ7442P, 0-30 PSIG, 2 1/2" DIAL, 1/4"-NPT BACK CONNECTION, 316LSS TUBE & SOCKET, DUAL SCALE, LF, C/W PANEL MOUNT U-CLAMP
631	2	TNK-217	GAUGE, LEVEL, 9" NOM LG, ALUMINUM FRAME, HSN SEALS
632	5	ICT-036S	VALVE, CHECK, BALL, INLINE, 3/8"-TUBE FTG, "SWAGelok" MODEL SS-CHS6-1, SS BODY, 1 PSIG SPRING
633	1	ICT-036S-20	VALVE, CHECK, BALL, INLINE, 3/8"-TUBE FTG, "SWAGelok" MODEL SS-CHS6-20, SS BODY, 20 PSIG SPRING
642	3	BVSB-032CS	VALVE BALL, 200#NPT, 3/8" CS, FLOW+B11, MFG: WESTERN GAUGE, MODEL: B11-3/8
644	2	BVSB-102CS	VALVE BALL, 2000#NPT, 1" CS, FLOW+B11, MFG: WESTERN GAUGE, MODEL: B11-1
648	0	TNK-761-03	SEAL POT, TRAILER, 12"H x 8"W x 30"LG, 1"-NPT CONN's, REFER TO STD DWG BES-761-03 (QTY:1, SHOP FABRICATE)
656	1	PRV-010	REGULATOR, 1/4"-FNPT, "FISHER" MODEL 67CFR, 250 PSIG MAWP, ALUMINUM BODY, 0-35 PSIG RANGE, c/w HANDWHEEL
657	1	PRV-000	REGULATOR, 1/4"-FNPT, "FISHER" MODEL 67CFR, 250 PSIG MAWP, ALUMINUM BODY, 0-35 PSIG RANGE
658	2	PI-25-0000	INDICATOR, PRESS, "WGI" MODEL WJ7812P, 30"Hg-30 PSIG, 2 1/2" DIAL, 1/4"-NPT BOTTOM CONNECTION, 316LSS TUBE & SOCKET, DUAL SCALE, LF
661	1	PS-110	SWITCH, PRESSURE, "CCS DUAL-SNAP" MODEL 6900GZE12, 1/2"-NPT, 316SS PORT & DIAPHRAGM, SPDT SWITCH, MAWP 500 PSIG, XP, CSA CLASS 1, DIV 1
671	2	NVSA-026FN	VALVE, NEEDLE, 1/4"x1/4"-FNPT, "WGI" MODEL WN1412P, 6000 PSIG MAWP, 316SS BODY, 316SS STEM, PTFE PACKING
672	2	NVSA-036FN	VALVE, NEEDLE, 3/8"x3/8"-FNPT, "WGI" MODEL WN1313, 10,000 PSIG MAWP, 316SS BODY, 316SS STEM, PTFE PACKING
673	4	NVT-SS1RS6	VALVE, NEEDLE, 3/8" x 3/8" TUBE ENDS, "WHITEY", MODEL 1RS6, STAINLESS STEEL, 5000 PSIG MAWP @ 100' F
685	1	HOS-7010	HOSE, FLEX, 1"-MNPT X 12" LG, SS CORRUGATED, T316SS OVERBRAID
690	1	PRV-289H	VALVE, RELIEF, 1"-MNPT X 1"-FNPT, "FISHER" MODEL 289H, ALUMINUM BODY, 1 TO 4 1/2 PSIG RANGE

ELECTRICAL TERMINATIONS      PNEUMATIC TERMINATIONS  
 ◆ 246 PURGE PACKING PRESSURE HIGH      ◯ 70 INSTRUMENT GAS

NOTES:  
 1. TRUCKER TO OPEN WHEN DRAINING OIL TANK.  
 2. INSTALLATION OF AN OFF-SKID FUEL SHUT-OFF VALVE IS REQ'D.

**AS BUILT**  
 SIGNED: *[Signature]* DATE: AUG 20 2010

REV	DATE	BY	APPR	DESCRIPTION
A	10-08-19	CP	DR	AS BUILT-LEASED TO TALISMAN ENERGY
0	10-04-23	CP	DR	ISSUED FOR CONSTRUCTION

REVISIONS

**BIDELE EQUIPMENT** 6900 - 112th AVENUE S.E.  
 CALGARY, AB T2C 4Z1  
 PHONE: (403) 235-5877  
 FAX: (403) 272-7749

GAS COMPRESSION

PACKING CASE / DISTANCE PIECE VENT AND DRAIN DETAIL  
 ARIEL JGT/4

CUSTOMER: BIDELE EQUIPMENT  
 LOCATION: TRAILER MOUNTED COMPRESSOR - MOBILE  
 LSD: PORTABLE      JOB#: 10-583

DWN	DATE	SCALE	DWG#	REV
CP	10-04-22	NTS	10-583-761	A