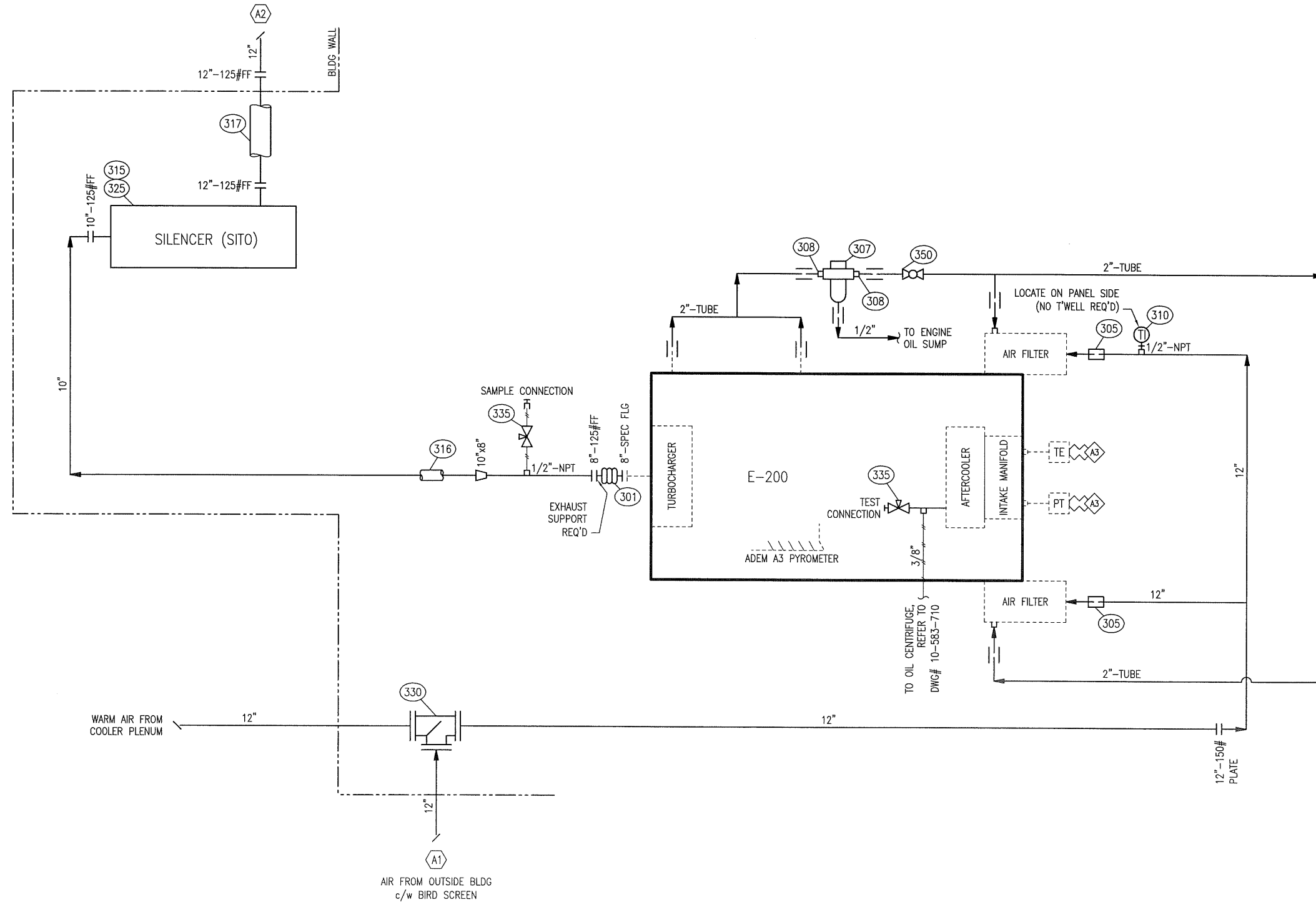


THIS DRAWING IS SOLE PROPERTY OF BIDELE EQUIPMENT AND SHALL NOT BE REPRODUCED, COPIED, LENT, ALTERED NOR USED FOR ANY PURPOSE OTHER THAN WHICH IT IS FURNISHED EXCEPT WITH THE WRITTEN PERMISSION OF BIDELE EQUIPMENT

E-200 ENGINE
CATERPILLAR G3516LE AFRC

BILL OF MATERIALS

MK	QTY	PART NUMBER	DESCRIPTION
301	1	EXP-082	CONNECTION, FLEX, 8"-SPECIAL CAT x 8"-125#FF, 12" LG, SS BELLOWS, CS PLATE FLANGES
305	2	HOS-8000	CONNECTOR, HOSE, NEOPRENE, 1/8" THK, c/w HOSE CLAMPS
307	1	FLT-8000	FILTER, CRANKCASE, "RACOR" MODEL CCV8000, 800-1600 HP 40 CFM, -40-240°F, 1-7/8" CONNECTIONS, C/W CCV55222-06 / CCV55222-08 FILTER ELEMENT
308	2	HOS-5206	FITTING, HOSE, 1 1/2" MNPT x 2" HOSE, "DIXON" MODEL STC2520
310	1	TI-36-160	INDICATOR, TEMP, "WGI" MODEL WL31302, -40 TO 160° F, 3" DIAL, DUAL SCALE, 1/2"-NPT BACK CONNECTION, 1/4" OD x 6" INSERTION, 304SS
315	1	EXH-BLKT-HP1012SITQ	INSULATION, EXHAUST, 2" THICK, TO SUIT SILEX MODEL HPSCO-10-SITO-BB-SMI-C-B-S
316	1	EXH-BLKT-10LR90	INSULATION, EXHAUST, 2" THICK, TO SUIT 10" X 90" LONG RADIUS ELBOW 15" LG. ON EACH SIDE.
317	1	EXH-BLKT-1212	INSULATION, EXHAUST, 2" THICK, TO SUIT EXHAUST STACK, 12"OD X 12"OAL
325	1	EXH-HPSCO-10-SITO	SILENCER, DISK TYPE, SUPER CRITICAL, COLD, "SILEX" MODEL HPSCO-10-SITO-BB-SMI-C-B-S, 10" SIDE IN/TOP OUT, INLET 10" FLANGE, OUTLET 12" FLANGE, STANDARD MOUNTED INLET, BRACKETS AT BOTTOM, CARBON STEEL, BLACK PAINT
330	1	AIR-BOX12	BIDELE FABRICATED AIR-INTAKE MIXING BOX. 12" X 10GA. TUBE C/W (3) 12" X 1/4"THK PLATE FLANGE SA-36, INCLUDES BRACKETS, CONTROL ARM AND HARDWARE
335	2	NVSA-026F	VALVE, NEEDLE, 1/4"x1/4"-FNPT, "WGI" MODEL WN1612P, 6000 PSIG MAWP, ZINC PLATED A105 CS BODY, 316SS STEM, PTFE PACKING
350	0	BVS-B200F	VALVE, BALL, 2"-NPT, 600# WOG, FULL PORT, BRONZE BODY (QTY:1, c/w ENGINE)



AS BUILT
SIGNED: *Jason M. New* DATE: AUG 20 2010

ELECTRICAL TERMINATIONS

A3 CATERPILLAR ADEM A3

REV	DATE	BY	APPR	DESCRIPTION
A	10-08-19	CP	DR	AS BUILT-LEASED TO TALISMAN ENERGY
0	10-04-27	CP	DR	ISSUED FOR CONSTRUCTION

REVISIONS

BIDELE EQUIPMENT
6900 - 112th AVENUE S.E.
CALGARY, AB T2C 4Z1
PHONE: (403) 235-5877
FAX: (403) 272-7749

GAS COMPRESSION

ENGINE AIR & EXHAUST UTILITY FLOW DIAGRAM
CATERPILLAR G3516LE AFRC

CUSTOMER: BIDELE EQUIPMENT
LOCATION: TRAILER MOUNTED COMPRESSOR - MOBILE
LSD: PORTABLE JOB#: 10-583

DWN	DATE	SCALE	DWG#	REV
CP	10-04-22	NTS	10-583-730	A