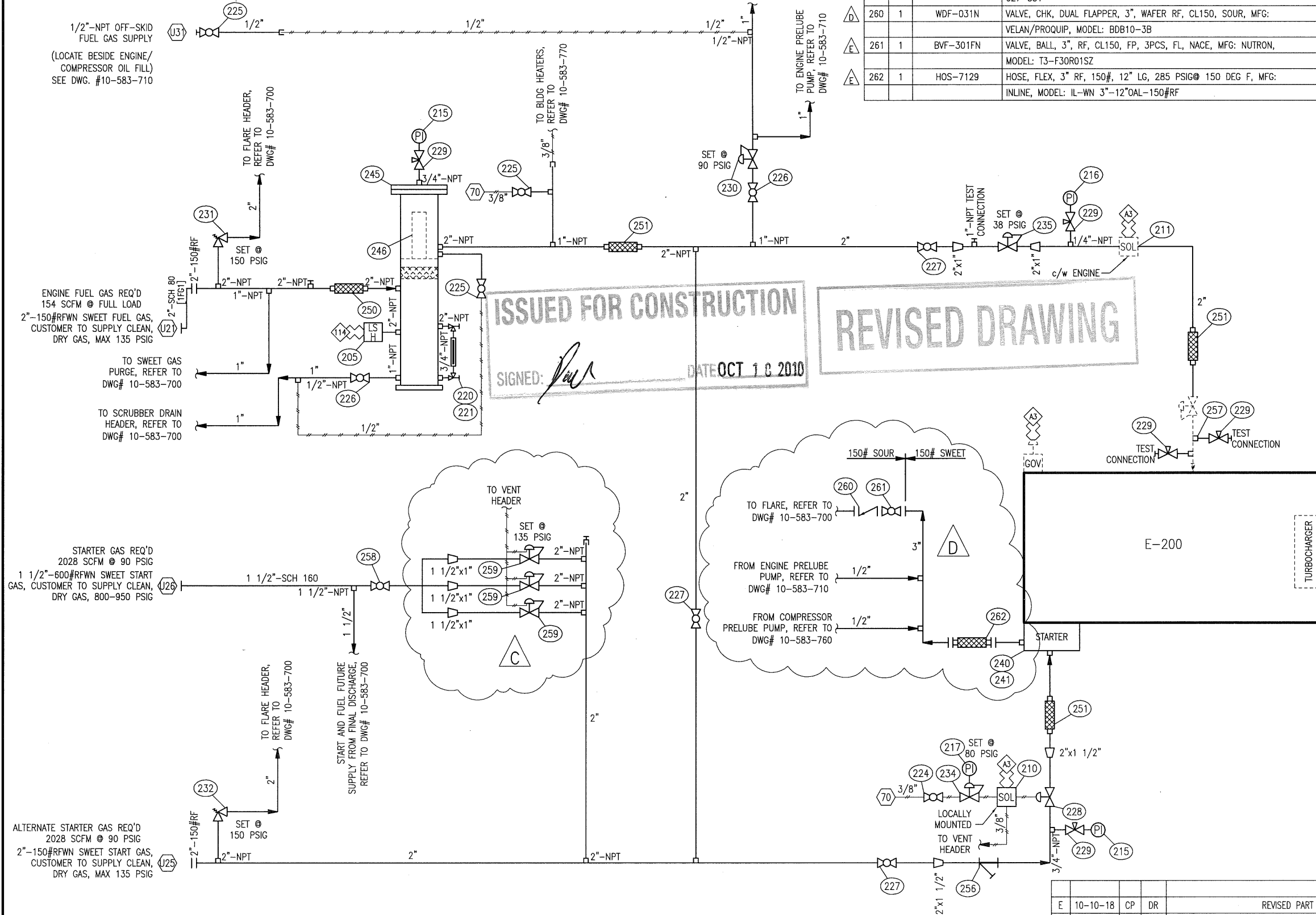


THIS DRAWING IS SOLE PROPERTY OF BIDELE EQUIPMENT AND SHALL NOT BE REPRODUCED, COPIED, LENT, ALTERED NOR USED FOR ANY PURPOSE OTHER THAN WHICH IT IS FURNISHED EXCEPT WITH THE WRITTEN PERMISSION OF BIDELE EQUIPMENT

E-200 ENGINE
CATERPILLAR G3516LE AFRC



BILL OF MATERIALS			
MK	QTY	PART NUMBER	DESCRIPTION
256	1	YSS-215	STRAINER, Y, 1-1/2"-NPT, "COLTEN" MODEL 250YTIG, 250 PSIG @ 400°F, CAST IRON BODY, 100 MESH, 304SS SCREEN, FIBRE GASKET
257	1	ENG-507	ADAPTER, 1/2" FNPT X 1/2" ORB, MFG: AREOQUIP, MODEL: 2216-8-8S
258	1	BVS-153F	VALVE, BALL, 1-1/2", FNPT, 3000#, FP, 3PCS, FL, SWT, MFG: NUTRON, MODEL: T3-F15S30B
259	3	PRV-551	REGULATOR, 1/4"-PT, 70-150 PSI RANGE, MFG: FISHER, MODEL: 627-551
260	1	WDF-031N	VALVE, CHK, DUAL FLAPPER, 3", WAFER RF, CL150, SOUR, MFG: VELAN/PROQUIP, MODEL: BDB10-3B
261	1	BVF-301FN	VALVE, BALL, 3", RF, CL150, FP, 3PCS, FL, NACE, MFG: NUTRON, MODEL: T3-F30R01SZ
262	1	HOS-7129	HOSE, FLEX, 3" RF, 150#, 12" LG, 285 PSIG @ 150 DEG F, MFG: INLINE, MODEL: IL-WN 3"-12"OAL-150#RF

BILL OF MATERIALS			
MK	QTY	PART NUMBER	DESCRIPTION
205	1	LLS-320	SWITCH, LEVEL, ELECTRIC, 2"-NPT, "NORRISSEAL" MODEL 1005E-A696BVS, SPDT, A696 BODY, HORIZONTAL 316SS FLOAT, 1500 PSIG MAWP @ 220° F, STD. SERVICE
210	1	SOL-004	VALVE, SOLENOID, 3 WAY, 24VDC, 1/4"-NPT, "ASCO" MODEL EF8320G231-24, 160 PSID MAX, 1/16" ORIFICE, SS BODY, NC
211	0	SOL-005	VALVE, SOLENOID, 2 WAY, 24VDC, 2"-NPT, "ASCO" MODEL EFHTX8215B08017676, 15 PSID MAX, 2-3/32" ORIFICE, ALUMINUM BODY, NBR SEALS, DIAPHRAGMS & DISC, 305SS CORE TUBE, PTFE RIDER RINGS (QTY:1 c/w ENGINE)
215	2	PI-25-0200	INDICATOR, PRESS, "WGI" MODEL WJ7854P, 0-200 PSIG, 2 1/2" DIAL, 1/4"-NPT BOTTOM CONNECTION, 316LSS TUBE & SOCKET, DUAL SCALE, LF
216	1	PI-25-0060	INDICATOR, PRESS, "WGI" MODEL WJ7846P, 0-60 PSIG, 2 1/2" DIAL, 1/4"-NPT BOTTOM CONNECTION, 316LSS TUBE & SOCKET, DUAL SCALE, LF
217	1	PI-20-0100	INDICATOR, PRESS, "WGI" MODEL WJ2048, 0-100 PSIG, 2" DIAL, 1/4"-NPT, BRASS TUBE & SOCKET, BACK CONN, DUAL SCALE
220	1	LLG-119	GAUGE, LEVEL, REFLEX, 1/2"-NPT, "PENBERTHY" MODEL 1RM9, 2250 PSIG @ 100°F
221	1	LLG-190	VALVE SET, GAUGE, 3/4"-NPT, "PENBERTHY" MODEL 330J, 4000 PSIG @ 100°F, A105 BODY, OFFSET DESIGN, c/w BALL CHECK
224	1	BVSB-022CS	VALVE BALL, 2000#NPT, 1/4" CS, FLOW+B11, MFG: WESTERN GAUGE, MODEL: B11-1/4
225	3	BVSB-052CS	VALVE BALL, 2000#NPT, 1/2" CS, FLOW+B11, MFG: WESTERN GAUGE, MODEL: B11-1/2
226	2	BVSB-102CS	VALVE BALL, 2000#NPT, 1" CS, FLOW+B11, MFG: WESTERN GAUGE, MODEL: B11-1
227	3	BVSB-202CS	VALVE BALL, 2000#NPT, 2" CS, FLOW+B11, MFG: WESTERN GAUGE, MODEL: B11-2
228	1	FSV-110	VALVE, FUEL, RELAY, QUICK OPEN, 1 1/2"-NPT, "TDI" MODEL RLVA25683-001-2-21, 450 PSIG MAWP, ALUMINUM BODY, 1/4"-NPT VENT
229	5	NVSA-026F	VALVE, NEEDLE, 1/4"x1/4"-FNPT, "WGI" MODEL WN1612P, 6000 PSIG MAWP, ZINC PLATED A105 CS BODY, 316SS STEM, PTFE PACKING
230	1	PRV-499	REGULATOR, 1"-NPT, "FISHER" MODEL 627, 1000 PSIG MAWP, MAXIMUM OUTLET PRESSURE OF 1000 PSIG, 1/2" ORIFICE, DI BODY, ALUMINUM TRIM, 70-150 PSIG RANGE
231	1	PSV-20002000GC	VALVE, PRESSURE RELIEF, 2" MNPT x 2" FNPT, "MERCER" MODEL 8100, STANDARD SWEET SERVICE BODY AND TRIM, "G" ORIFICE, SET PRESSURE = 150 PSIG @ 70°F, S/N: 566334
232	1	PSV-20002000HC	VALVE, PRESSURE RELIEF, 2" MNPT x 2" FNPT, "MERCER" MODEL 9100, STANDARD SWEET SERVICE BODY AND TRIM, "H" ORIFICE, SET PRESSURE = 150 PSIG @ 70°F, S/N: C004738
234	1	PRV-001	REGULATOR, 1/4"-FNPT, "FISHER" MODEL 67CFR, 250 PSIG MAWP, ALUMINUM BODY, 0-125 PSIG RANGE
235	1	PRV-498	REGULATOR, 1"-NPT, "FISHER" MODEL 627, 1000 PSIG MAWP, MAXIMUM OUTLET PRESSURE OF 1000 PSIG, 1/2" ORIFICE, DI BODY, ALUMINUM TRIM, 35-80 PSIG RANGE
240	1	ENG-304	STARTER, AIR/GAS, INERTIA ENGAGEMENT, "TDI" MODEL T121-60001-B1R, 2" NPT INLET x 3" OUTLET, 90-40 PSIG RANGE, 12T-6/8 PINION, DUAL TURBINE, MAX TORQUE @ ZERO RPM, PROOF PRESSURE 450 PSIG
241	1	ENG-334	ADAPTER, STARTER OUTLET, 3" 90° BW ELBOW, "TDI"
245	1	VES-530C-8U	SEPARATOR, FUEL GAS, 8 5/8" OD X 5'-3" S/S, 230 PSIG @ 300°F, REFER TO DWG BES-530C-8, S/N:
246	0	BEP-FG-324-OP	FILTER, GAS, "PECO" MODEL FG-324-OP, REVERSE FLOW (QTY:1 c/w VESSEL)
250	1	HOS-7028	HOSE FLEX, 2"-MNPT X 8" LG, SS CORRUGATED, T304SS OVERBRAID
			HOSE, C/W SCH 80 THREADED ENDS, 420 PSIG MAWP @ 70° F, C/W HEX NUT C/S ENDS
251	3	HOS-7020	HOSE, FLEX, 2"-MNPT X 12" LG, SS CORRUGATED, SS OVERBRAID C/W SCH 80 THREADED ENDS, 304 PSIG MAWP @ 70° F
252	2	HOS-6030	CONNECTOR, FLEX, 3" NOM DIA, "AEROQUIP"

ISSUED FOR CONSTRUCTION
REVISED DRAWING
SIGNED: [Signature] DATE OCT 18 2010

ELECTRICAL TERMINATIONS	
△3	CATERPILLAR ADEM A3
△114	FUEL GAS SEPARATOR LEVEL SHUTDOWN

PNEUMATIC TERMINATIONS	
△70	INSTRUMENT GAS

REV	DATE	BY	APPR	DESCRIPTION
E	10-10-18	CP	DR	REVISED PART #'S
D	10-09-27	CP	DR	REVISED STARTER EXHAUST
C	10-09-17	CP	JD	AS BUILT #2
B	10-08-19	CP	DR	AS BUILT-LEASED TO TALISMAN ENERGY
A	10-07-29	CP	JD	AS NOTED
O	10-04-23	CP	DR	ISSUED FOR CONSTRUCTION

BIDELE EQUIPMENT
6900 - 112th AVENUE S.E.
CALGARY, AB T2C 4Z1
PHONE: (403) 235-5877
FAX: (403) 272-7749

GAS COMPRESSION

ENGINE FUEL & START GAS UTILITY FLOW DIAGRAM
CATERPILLAR G3516LE AFRC

CUSTOMER: BIDELE EQUIPMENT
LOCATION: TRAILER MOUNTED COMPRESSOR - MOBILE
LSD: PORTABLE
JOB#: 10-583

DWN	DATE	SCALE	DWG#	REV
CP	10-04-22	NTS	10-583-720	E