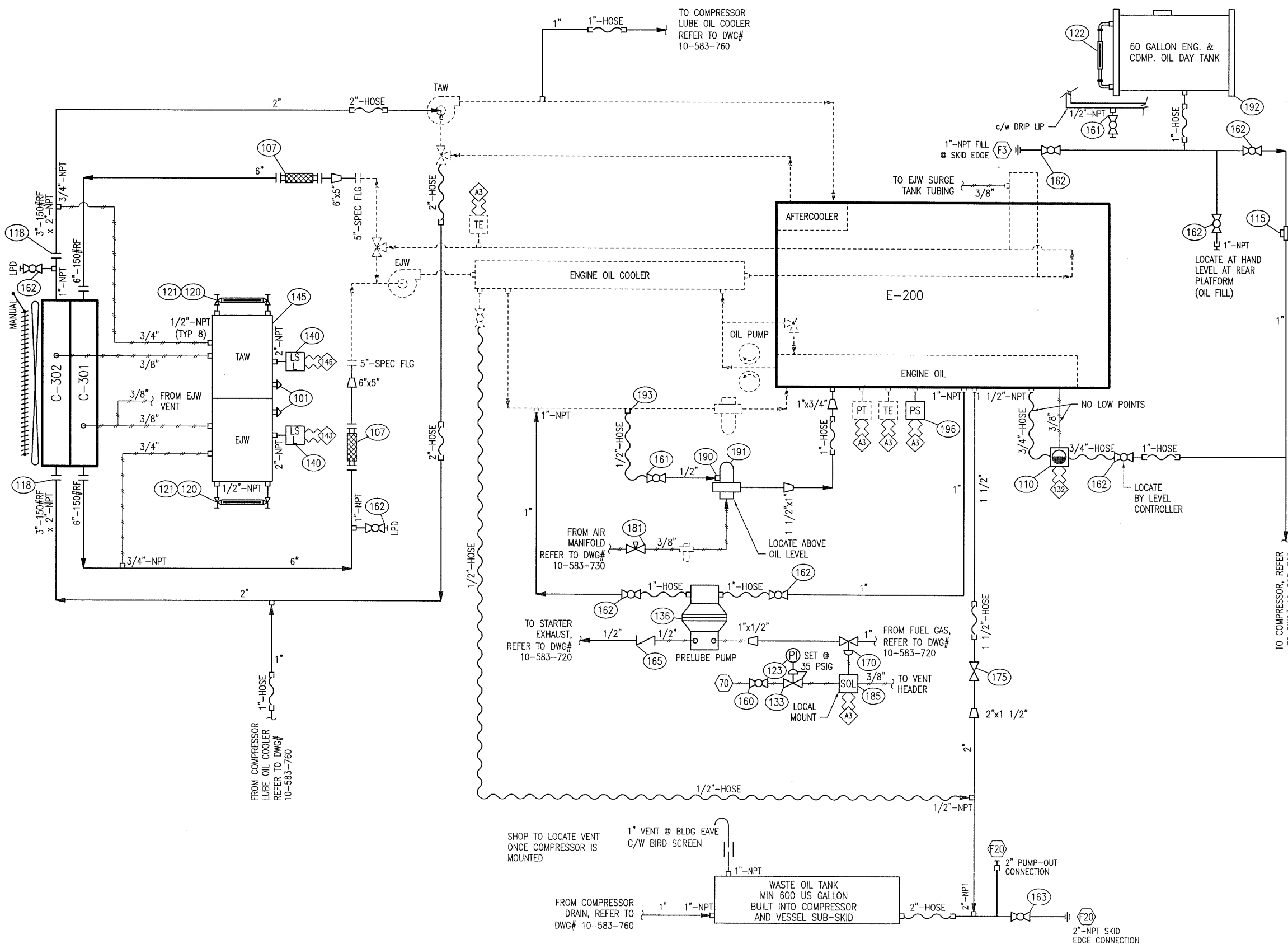


THIS DRAWING IS SOLE PROPERTY OF BIDELE EQUIPMENT AND SHALL NOT BE REPRODUCED, COPIED, LENT, ALTERED NOR USED FOR ANY PURPOSE OTHER THAN WHICH IT IS FURNISHED EXCEPT WITH THE WRITTEN PERMISSION OF BIDELE EQUIPMENT

C-301 EJW COOLER SECTION
 DESIGN PRESSURE = 14 PSIG @ 300°F
 S/N: 106600.1

C-302 AUX COOLER SECTION
 DESIGN PRESSURE = 14 PSIG @ 300°F
 S/N: 106600.2

E-200 ENGINE
 CATERPILLAR G3516LE AFRC



BILL OF MATERIALS			
MK	QTY	PART NUMBER	DESCRIPTION
101	2	TNK-306	CAP ASSEMBLY, PRESSURE, SET @ 7 PSIG
107	2	HOS-7618	HOSE, FLEX, 6"-150#RF X 18" LG, T316SS OVERBRAID HOSE, SA-105N
110	1	LLC-500	FLGS
115	1	TNK-310	CONTROLLER/SWITCH, OIL LEVEL, XP, UNIVERSAL MOUNT, MFG: KENCO, MODEL: KLCE-9
118	2	BWF-H0F	FILTER, OIL, AUTOMOTIVE, 1"-NPT, "BALDWIN" MODEL BF914, ALUMINUM HOUSING & FILTER
120	2	TNK-200	FLANGE, HUB, 3"-150#RF X 2"-NPT, SA-105N
121	2	TNK-293	GAUGE COCKS, TUBULAR, BRASS, C/W ROUND BAR PROTECTOR
122	1	TNK-217	GAUGE GLASS, LEVEL, TUBULAR, 5/8" OD, "PYREX" REDLINE
123	1	PI-20-0060	GAUGE, LEVEL, 9" NOM LG, ALUMINUM FRAME, HSN SEALS
133	1	PRV-000	INDICATOR, PRESS, "WGI" MODEL WJ2046, 0-60 PSIG, 2" DIAL, 1/4"-NPT, BRASS TUBE & SOCKET, BACK CONN, DUAL SCALE
136	1	PMP-B30	REGULATOR, 1/4"-FNPT, "FISHER" MODEL 67CFR, 250 PSIG MAWP, ALUMINUM BODY, 0-35 PSIG RANGE
140	2	LLS-320	PUMP, DIAPHRAGM, 1"-FNPT IN x OUT (LIQUID), 1/4"-FNPT IN x 3/4"-FNPT OUT (GAS), "YAMADA" MODEL NDP-20BAN-1S, 28 USGPM, SIDE PORTED, ALUMINUM BODY, BUNA N DIAPHRAGM, 100 PSIG MAX SUPPLY
145	1	TKN-011	SWITCH, LEVEL, ELECTRIC, 2"-NPT, "NORRISEAL" MODEL 1005E-A696BVS, SPDT, A696 BODY, HORIZONTAL 316SS FLOAT, 1500 PSIG MAWP @ 220° F, STD. SERVICE
160	1	BVSB-022CS	TANK, SURGE, 2 COMPARTMENT, 12"x12"x90" LG, REFER TO STD DWG SRG-TNK-2C
161	2	BVSB-052CS	VALVE BALL, 2000#NPT, 1/4" CS, FLOW+B11, MFG: WESTERN GAUGE, MODEL: B11-1/4
162	8	BVSB-102CS	VALVE BALL, 2000#NPT, 1/2" CS, FLOW+B11, MFG: WESTERN GAUGE, MODEL: B11-1/2
163	1	BVSB-202CS	VALVE BALL, 2000#NPT, 2" CS, FLOW+B11, MFG: WESTERN GAUGE, MODEL: B11-2
165	1	SCS-052	VALVE, CHECK, SWING, 1/2"-NPT, "NAVCO" MODEL CS-R05S08A8, CLASS 800, A105 BODY, F6a & HARDFACED SEATS
170	1	XXX-205	VALVE, CONTROL, 1"-NPT, "FISHER" MODEL 119, 150 PSIG MAWP, 9/16" ORIFICE, CI BODY, ALUMINUM TRIM, 6-30 PSIG RANGE
175	1	GTS-152	VALVE, GATE, 1 1/2"-NPT, "NAVCO" MODEL GA-R15S08A8, CLASS 800, A105 BODY, F6a & HARDFACED SEATS
181	1	NVSA-026F	VALVE, NEEDLE, 1/4"x1/4"-FNPT, "WGI" MODEL WN1612P, 6000 PSIG MAWP, ZINC PLATED A105 CS BODY, 316SS STEM, PTFE PACKING
185	1	SOL-002	VALVE, SOLENOID, 3 WAY, 24VDC, 1/4"-NPT, "ASCO" MODEL EF8320G202-24, 115 PSID MAX, 3/32" ORIFICE, SS BODY, NC
190	1	ENG-506	FITTING FOR OIL SPINNER, P/N: 2216-8-10S, 7/8" UNF, SAE "O" RING
191	1	ENG-505	CENTRIFUGE, 10-SAE J514 ORB IN x 1 1/2"-FNPT OUT, "SPINNER II" MODEL 200 HD-LCB, 4 USGPM @ 60 PSIG, C/W LEVEL CONTROL BASE & FILTER
192	1	HYD-TANK-60	TANK, HYDRAULIC STORAGE, 60 US GALLON, "VESCOR" MODEL: 10060, RECTANGULAR, C/W FILL-CAP, VENT, AND LEVEL GAUGE
193	1	ENG-507	ADAPTER, 1/2" FEMALE NPT X 1/2" MALE SAE O-RING BOSS
196	1	CAT-150-1240	SWITCH, PRESSURE, ENGINE PRE-LUBE, "CATERPILLAR" MODEL 150-1240

AS BUILT
 AUG 20 2010
 SIGNED: *Jaron N. [Signature]* DATE: _____

- ELECTRICAL TERMINATIONS**
- A3 CATERPILLAR ADEM A3
 - 143 ENGINE JACKET WATER LEVEL SHUTDOWN
 - 142 ENGINE OIL LEVEL SHUTDOWN
 - 146 ENGINE TURBO WATER LEVEL SHUTDOWN
- PNEUMATIC TERMINATIONS**
- 70 INSTRUMENT GAS

REV	DATE	BY	APPR	DESCRIPTION
A	10-08-19	CP	DR	AS BUILT-LEASED TO TALISMAN ENERGY
O	10-04-26	CP	DR	ISSUED FOR CONSTRUCTION

BIDELE EQUIPMENT
 6900 - 112th AVENUE S.E.
 CALGARY, AB T2C 4Z1
 PHONE: (403) 235-5877
 FAX: (403) 272-7749

GAS COMPRESSION

ENGINE OIL & COOLING UTILITY FLOW DIAGRAM
 CATERPILLAR G3516LE AFRC

CUSTOMER: BIDELE EQUIPMENT
 LOCATION: TRAILER MOUNTED COMPRESSOR - MOBILE
 LSD: PORTABLE
 JOB#: 10-583

DWN CP 10-04-22 SCALE NTS DWG# 10-583-710 REV A