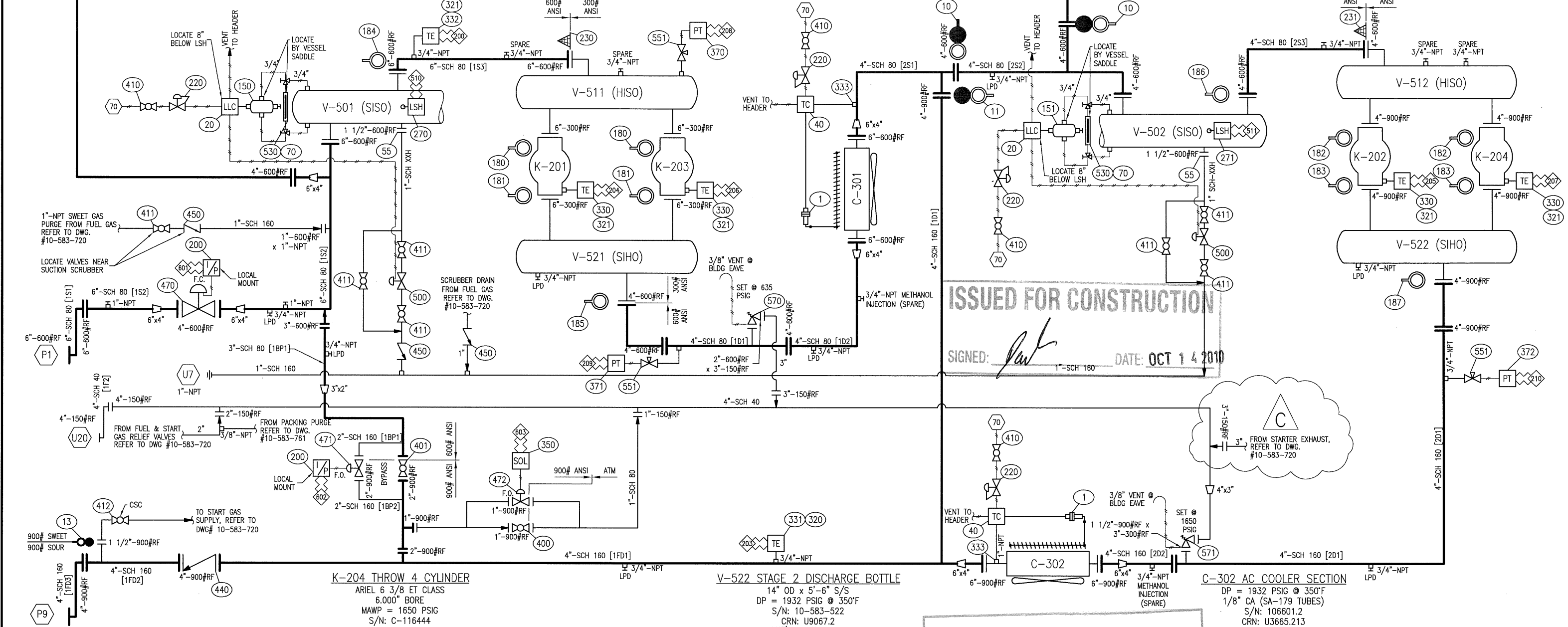


V-501 STAGE 1 SCRUBBER V-511 STAGE 1 SUCTION BOTTLE K-201 THROW 1 CYLINDER K-203 THROW 3 CYLINDER V-521 STAGE 1 DISCHARGE BOTTLE C-301 IC-1 COOLER SECTION V-502 STAGE 2 SCRUBBER V-512 STAGE 2 SUCTION BOTTLE K-202 THROW 2 CYLINDER

30" OD x 4'-0" S/S 18" OD x 5'-6" S/S ARIEL 9 3/4 ET CLASS ARIEL 9 3/4 ET CLASS 16" OD x 5'-6" S/S DP = 1287 PSIG @ 350°F 30" OD x 3'-6" S/S 16" OD x 5'-6" S/S ARIEL 6 3/8 ET CLASS
 DP = 1287 PSIG @ 350°F DP = 645 PSIG @ 350°F 9.750" BORE 9.750" BORE DP = 645 PSIG @ 350°F 1/8" CA (SA-179 TUBES) DP = 1287 PSIG @ 350°F DP = 645 PSIG @ 350°F 6.000" BORE
 S/N: 10-583-501 S/N: 10-583-511 MAWP = 635 PSIG MAWP = 635 PSIG S/N: 10-583-521 S/N: 106601.1 S/N: 10-583-501 S/N: 10-583-512 MAWP = 1650 PSIG
 CRN: U4660.213 CRN: U9038.2 S/N: C-115460 S/N: C-115402 CRN: U9088.2 CRN: R2615.213 CRN: U4660.213 CRN: U9071.2 S/N: C-116443
 NAT'L BD NO: 97 NAT'L BD NO: 98 NAT'L BD NO: 100 NAT'L BD NO: 99



ISSUED FOR CONSTRUCTION
 SIGNED: [Signature] DATE: OCT 14 2010

REVISED DRAWING

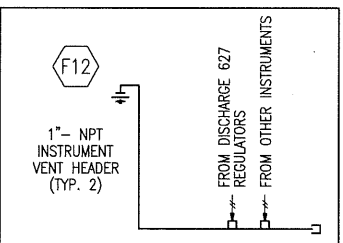
THIS DRAWING IS SOLE PROPERTY OF BIDELE EQUIPMENT AND SHALL NOT BE REPRODUCED, COPIED, LENT, ALTERED NOR USED FOR ANY PURPOSE OTHER THAN WHICH IT IS FURNISHED EXCEPT WITH THE WRITTEN PERMISSION OF BIDELE EQUIPMENT

ELECTRICAL TERMINATIONS

- 200 SUCTION TEMPERATURE
- 203 AC OUTLET TEMPERATURE
- 204 HIGH DISCHARGE TEMP. CYLINDER #1
- 205 HIGH DISCHARGE TEMP. CYLINDER #2
- 206 HIGH DISCHARGE TEMP. CYLINDER #3
- 207 HIGH DISCHARGE TEMP. CYLINDER #4
- 208 SUCTION PRESSURE STG. ONE
- 209 DISCHARGE PRESSURE STG. ONE
- 210 DISCHARGE PRESSURE STG. TWO
- 510 HIGH LIQUID LEVEL SCRUBBER STG. ONE
- 511 HIGH LIQUID LEVEL SCRUBBER STG. TWO
- 601 SUCTION CONTROL VALVE SIGNAL
- 602 AUTO BYPASS VALVE SIGNAL
- 603 AUTOBLOWDOWN VALVE SIGNAL
- 70 INSTRUMENT GAS

PNEUMATIC TERMINATIONS

ALL PRESSURE TRANSMITTERS, SOLENOIDS & I/P TRANSDUCERS TO BE LOCATED BY PANEL



ALL PRESSURE TRANSMITTERS, TO HAVE ISOLATION NEEDLE VALVE AND CALIBRATING PLUGGED CONNECTION (BY OTHERS)

GENERAL NOTES

- INSTRUMENTATION**
 - TEMP. & PRESS. GAUGES SHALL BE DUAL SCALE
 - INSTRUMENT MEDIUM TO BE CLEAN DRY GAS
 - CONTROL PANEL POWERED BY - 24 V DC
 - PROCESS TUBING TO BE 1/4" OD MIN x .035" w.t. 316 SS
 - FITTINGS TO BE 316 SS c/w SS FERRULES
 - INSTRUMENT TUBING TO BE 1/4" OD MIN x .035" w.t. 316 SS
 - FITTINGS TO BE 316 SS c/w SS FERRULES
 - LUBE OIL TUBING TO BE OD 1/4" OD MIN x .035" w.t. 316 SS
 - FITTINGS TO BE 316 SS c/w SS FERRULES
 - TUBING RUNS IN TRAFFIC AREAS SHALL BE PROTECTED WITH REMOVABLE COVER
 - ON SKID N.I. WIRING SHALL BE PROTECTED INSIDE RIGID ALUMINUM CONDUIT
- PROCESS PIPING**
 - CONSTRUCTED IN ACCORDANCE WITH ANSI B31.3
 - HYDROSTATIC TESTED TO 1.5 x DESIGN PRESS @ AMBIENT
 - CORROSION ALLOWANCE = 0.125 INCHES
 - RADIOGRAPHIC EXAMINATION = FULL (100%)
 - STRESS RELIEVED - 1150 Deg.F / ONE HOUR
 - EXTERNALLY PICKLED
 - INTERNALLY PICKLED AND RUST PROTECTED
 - ALL FLANGED RELIEF VALVES SHALL BE GUSSETED BACK TO PIPING OR VESSEL
 - PIPING TO BE ANCHORED TO STRUCTURAL MEMBER WITH 4 BOLT CLAMPS
- PROCESS PRESSURE VESSELS**
 - PROCESS SCREWED CONNECTIONS SHALL BE MINIMUM 3000# F.S. THREADOLETS
 - CONSTRUCTED IN ACCORDANCE WITH ASME SECTION VIII, DIV. 1
 - HYDROSTATIC TESTED TO 1.3 x DESIGN PRESS. @ AMBIENT
 - CORROSION ALLOWANCE = 0.125 INCHES
 - RADIOGRAPHIC EXAMINATION = FULL PER UW 11a, RT-1
 - STRESS RELIEVED - 1150 Deg.F / ONE HOUR
 - EXTERNALLY PICKLED
 - INTERNALLY PICKLED AND RUST PROTECTED
 - VESSEL THREADED CONNECTIONS SHALL BE MINIMUM 6000# F.S. THREADOLETS
 - CRN'S REQ'D FOR AB, BC, SK
 - NATIONAL BOARD NUMBERS REQ'D
- STRUCTURAL STEEL**
 - STEP DECK TRAILER "ASPEN" 60 TON, TRI-AXLE
 - 12 WHEEL, AIR RIDE SUSPENSION, 6 DOLLEY LEGS
- CUSTOMER NOTES**
 - WARM GREY INDUSTRIAL ENAMEL
 - COLOR OF PACKAGE: ALL EQUIPMENT PRIMED & FINISHED WITH FULL LOAD NITROGEN TEST RUN REQ'D

BIDELE EQUIPMENT 6900 - 112th AVENUE S.E. CALGARY, AB T2C 4Z1 PHONE: (403) 235-5877 FAX: (403) 272-7749

SOUR PROCESS FLOW DIAGRAM (<5% H2S)
 CATERPILLAR G3516LE AFRC / ARIEL JGT/4 / AIR-X-HEMPHILL
 CUSTOMER: BIDELE EQUIPMENT
 LOCATION: TRAILER MOUNTED COMPRESSOR - MOBILE
 LSD: PORTABLE JOB#: 10-583

DWN DATE SCALE DWG# REV
 CP 10-04-22 NTS 10-583-700 C