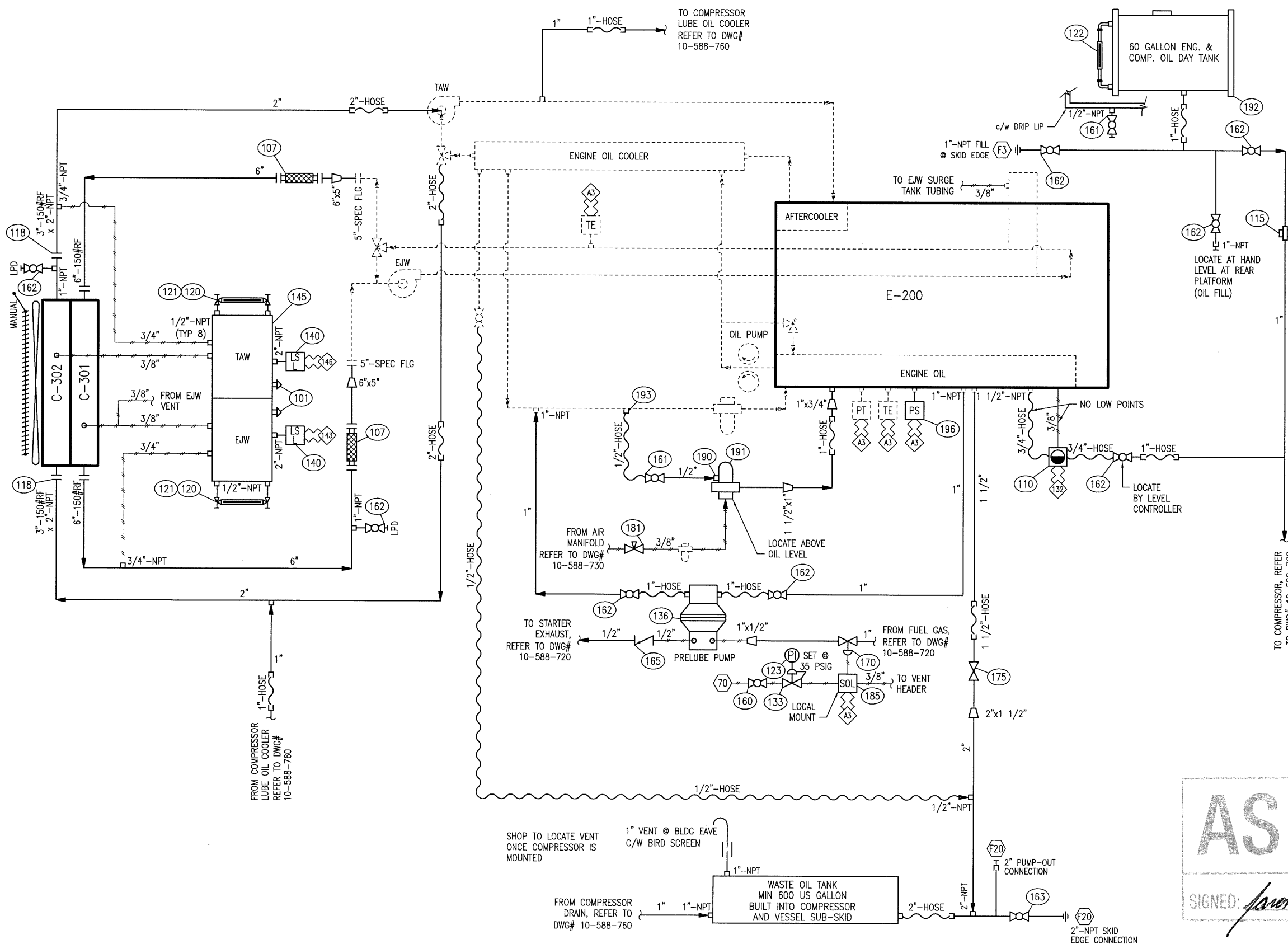


THIS DRAWING IS SOLE PROPERTY OF BIDELE EQUIPMENT AND SHALL NOT BE REPRODUCED, COPIED, LENT, ALTERED NOR USED FOR ANY PURPOSE OTHER THAN WHICH IT IS FURNISHED EXCEPT WITH THE WRITTEN PERMISSION OF BIDELE EQUIPMENT

C-301 EJW COOLER SECTION
 DESIGN PRESSURE = 14 PSIG @ 300°F
 S/N: 106608.1

C-302 AUX COOLER SECTION
 DESIGN PRESSURE = 14 PSIG @ 300°F
 S/N: 106608C.2

E-200 ENGINE
 CATERPILLAR G3516LE AFRC



BILL OF MATERIALS			
MK	QTY	PART NUMBER	DESCRIPTION
101	2	TNK-306	CAP ASSEMBLY, PRESSURE, SET @ 7 PSIG
107	2	HOS-7618	HOSE, FLEX, 6"-150#RF X 18" LG, T316SS OVERBRAID HOSE, SA-105N FLGS
110	1	LLC-500	CONTROLLER/SWITCH, OIL LEVEL, XP, UNIVERSAL MOUNT, MFG: KENCO, MODEL: KLCE-9
115	1	TNK-310	FILTER, OIL, AUTOMOTIVE, 1"-NPT, "BALDWIN" MODEL BF914, ALUMINUM HOUSING & FILTER
118	2	BWF-HOF	FLANGE, HUB, 3"-150#RF X 2"-NPT, SA-105N
120	2	TNK-200	GAUGE COCKS, TUBULAR, BRASS, C/W ROUND BAR PROTECTOR
121	2	TNK-293	GAUGE TUBULAR, TUBULAR, 5/8" OD, "PYREX" REDLINE
122	1	TNK-217	GAUGE, LEVEL, 9" NOM LG, ALUMINUM FRAME, HSN SEALS
123	1	PI-20-0060	INDICATOR, PRESS, "WGI" MODEL WJ2046, 0-60 PSIG, 2" DIAL, 1/4"-NPT, BRASS TUBE & SOCKET, BACK CONN, DUAL SCALE
133	1	PRV-000	REGULATOR, 1/4"-FNPT, "FISHER" MODEL 67CFR, 250 PSIG MAWP, ALUMINUM BODY, 0-35 PSIG RANGE
136	1	PMP-B30	PUMP, DIAPHRAGM, 1"-FNPT IN X OUT (LIQUID), 1/4"-FNPT IN X 3/4"-FNPT OUT (GAS), "YAMADA" MODEL NDP-20BAN-1S, 28 USGPM, SIDE PORTED, ALUMINUM BODY, BUNA N DIAPHRAGM, 100 PSIG MAX SUPPLY
140	2	LLS-320	SWITCH, LEVEL, ELECTRIC, 2"-NPT, "NORRISAL" MODEL 1005E-A696BVS, SPDT, A696 BODY, HORIZONTAL 316SS FLOAT, 1500 PSIG MAWP @ 220° F, STD. SERVICE
145	1	TNK-011	TANK, SURGE, 2 COMPARTMENT, 12"x12"x90" LG, REFER TO STD DWG SRG-TNK-2C
160	1	BVSB-022CS	VALVE BALL, 2000#NPT, 1/4" CS, FLOW+B11, MFG: WESTERN GAUGE, MODEL: B11-1/4
161	2	BVSB-052CS	VALVE BALL, 2000#NPT, 1/2" CS, FLOW+B11, MFG: WESTERN GAUGE, MODEL: B11-1/2
162	8	BVSB-102CS	VALVE BALL, 2000#NPT, 1" CS, FLOW+B11, MFG: WESTERN GAUGE, MODEL: B11-1
163	1	BVSB-202CS	VALVE BALL, 2000#NPT, 2" CS, FLOW+B11, MFG: WESTERN GAUGE, MODEL: B11-2
165	1	SCS-052	VALVE, CHECK, SWING, 1/2"-NPT, "NAVCO" MODEL CS-R05S08AB, CLASS 800, A105 BODY, F6a & HARDFACED SEATS
170	1	XXX-205	VALVE, CONTROL, 1"-NPT, "FISHER" MODEL 119, 150 PSIG MAWP, 9/16" ORIFICE, CI BODY, ALUMINUM TRIM, 6-30 PSIG RANGE
175	1	GTS-152	VALVE, GATE, 1 1/2"-NPT, "NAVCO" MODEL GA-R15S08AB, CLASS 800, A105 BODY, F6a & HARDFACED SEATS
181	1	NVSA-026F	VALVE, NEEDLE, 1/4"x1/4"-FNPT, "WGI" MODEL WN1612P, 6000 PSIG MAWP, ZINC PLATED A105 CS BODY, 316SS STEM, PTFE PACKING
185	1	SOL-002	VALVE, SOLENOID, 3 WAY, 24VDC, 1/4"-NPT, "ASCO" MODEL EFB320G202-24, 115 PSID MAX, 3/32" ORIFICE, SS BODY, NC
190	1	ENG-506	FITTING FOR OIL SPINNER, P/N: 2216-8-10S, 7/8" UNF, SAE "O" RING
191	1	ENG-505	CENTRIFUGE, 10-SAE J514 ORB IN X 1 1/2"-FNPT OUT, "SPINNER II" MODEL 200 HD-LCB, 4 USGPM @ 60 PSIG, C/W LEVEL CONTROL BASE & FILTER
192	1	HYD-TANK-60	TANK, HYDRAULIC STORAGE, 60 US GALLON, "VESCOR" MODEL: 10060, RECTANGULAR, C/W FILL-CAP, VENT, AND LEVEL GAUGE
193	1	ENG-507	ADAPTER, 1/2" FEMALE NPT X 1/2" MALE SAE O-RING BOSS
196	1	CAT-150-1240	SWITCH, PRESSURE, ENGINE PRE-LUBE, "CATERPILLAR" MODEL 150-1240

AS BUILT

SIGNED: *[Signature]* DATE: SEP 20 2010

ELECTRICAL TERMINATIONS

- CATERPILLAR ADEM A3
- ENGINE JACKET WATER LEVEL SHUTDOWN
- ENGINE OIL LEVEL SHUTDOWN
- ENGINE TURBO WATER LEVEL SHUTDOWN

PNEUMATIC TERMINATIONS

- INSTRUMENT GAS

REV	DATE	BY	APPR	DESCRIPTION
A	10-09-17	NP	JD	AS BUILT
O	10-05-20	NP	DR	ISSUED FOR CONSTRUCTION

BIDELE EQUIPMENT 6900 - 112th AVENUE S.E. CALGARY, AB T2C 4Z1 PHONE: (403) 235-5877 FAX: (403) 272-7749

GAS COMPRESSION

ENGINE OIL & COOLING UTILITY FLOW DIAGRAM
 CATERPILLAR G3516LE AFRC

CUSTOMER: TALISMAN ENERGY INC.
 LOCATION: TRAILER MOUNTED COMPRESSOR - MOBILE
 LSD: PORTABLE JOB#: 10-588

DWN NP	DATE 10-05-20	SCALE NTS	DWG# 10-588-710	REV A
--------	---------------	-----------	-----------------	-------