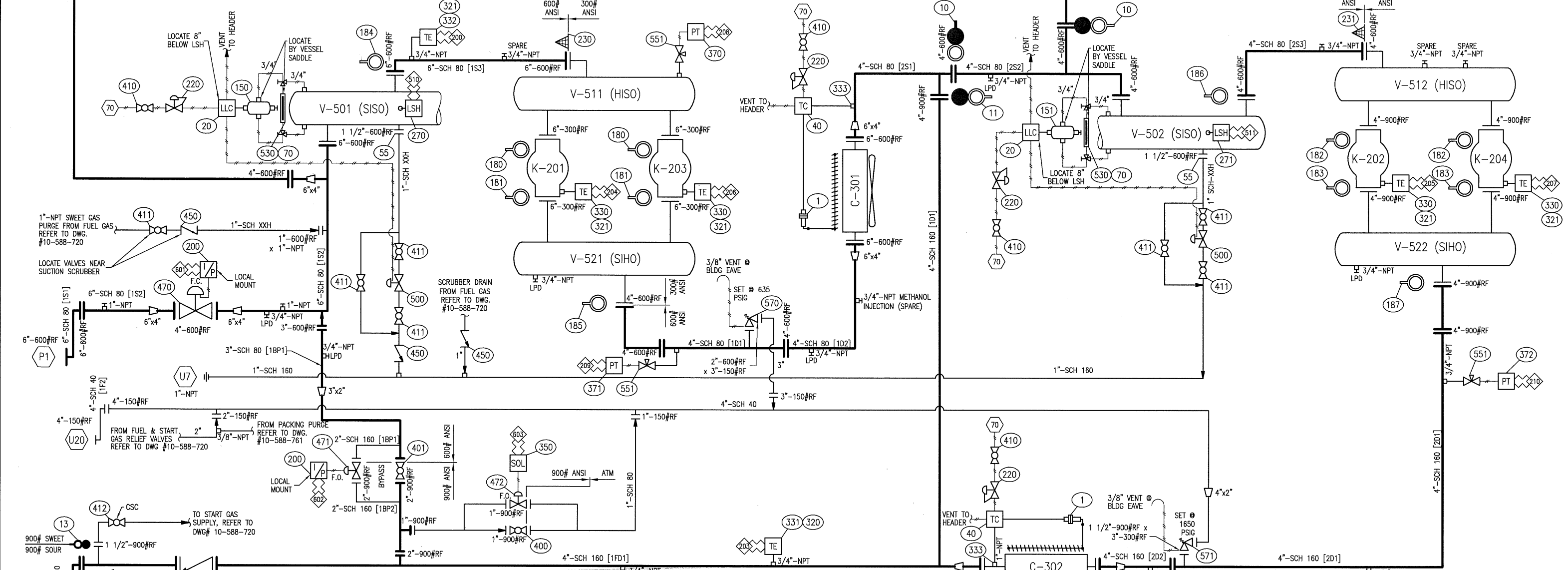


V-501 STAGE 1 SCRUBBER V-511 STAGE 1 SUCTION BOTTLE K-201 THROW 1 CYLINDER K-203 THROW 3 CYLINDER V-521 STAGE 1 DISCHARGE BOTTLE C-301 IC-1 COOLER SECTION V-502 STAGE 2 SCRUBBER V-512 STAGE 2 SUCTION BOTTLE K-202 THROW 2 CYLINDER

30" OD x 4'-0" S/S DP = 1287 PSIG @ 350°F S/N: 10-588-501 CRN: U4660.213 NAT'L BD NO: 102
 18" OD x 5'-6" S/S DP = 645 PSIG @ 350°F S/N: 10-588-511 CRN: U9038.213 NAT'L BD NO: 103
 ARIEL 9 3/4 ET CLASS 9.750" BORE MAWP = 635 PSIG S/N: C-116597
 ARIEL 9 3/4 ET CLASS 9.750" BORE MAWP = 635 PSIG S/N: C-116599
 16" OD x 5'-6" S/S DP = 645 PSIG @ 350°F S/N: 10-588-521 CRN: U9088.213 NAT'L BD NO: 105
 4"-SCH 80 [2S2]
 DP = 1287 PSIG @ 350°F 1/8" CA (SA-179 TUBES) S/N: 106611.1 CRN: R2615.213 NAT'L BD NO: 14925
 30" OD x 3'-6" S/S DP = 1287 PSIG @ 350°F S/N: 10-588-501 CRN: U4660.213 NAT'L BD NO: 102
 16" OD x 5'-6" S/S DP = 645 PSIG @ 350°F S/N: 10-588-512 CRN: U9071.213 NAT'L BD NO: 104
 ARIEL 6 3/8 ET CLASS 6.000" BORE MAWP = 1650 PSIG S/N: C-116598



K-204 THROW 4 CYLINDER
 ARIEL 6 3/8 ET CLASS
 6.000" BORE
 MAWP = 1650 PSIG
 S/N: C-116600

V-522 STAGE 2 DISCHARGE BOTTLE
 14" OD x 5'-6" S/S
 DP = 1932 PSIG @ 350°F
 S/N: 10-588-522
 CRN: U9067.213
 NAT'L BD NO: 106

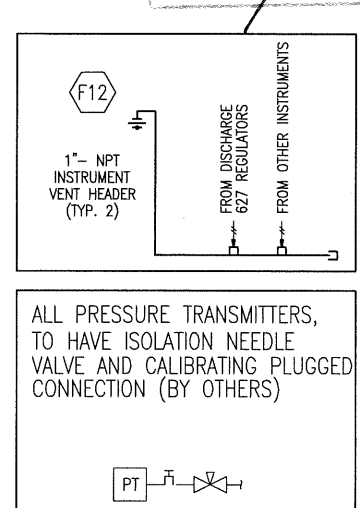
C-302 AC COOLER SECTION
 DP = 1932 PSIG @ 350°F
 1/8" CA (SA-179 TUBES)
 S/N: 106611.2
 CRN: U3665.213
 NAT'L BD NO: 14926

AS BUILT

SIGNED: *Jason M. [Signature]* DATE: SEP 20 2010

THIS DRAWING IS SOLE PROPERTY OF BIDELE EQUIPMENT AND SHALL NOT BE REPRODUCED, COPIED, LENT, ALTERED NOR USED FOR ANY PURPOSE OTHER THAN WHICH IT IS FURNISHED EXCEPT WITH THE WRITTEN PERMISSION OF BIDELE EQUIPMENT

- ELECTRICAL TERMINATIONS**
- 200 SUCTION TEMPERATURE
 - 203 AC OUTLET TEMPERATURE
 - 204 HIGH DISCHARGE TEMP. CYLINDER #1
 - 205 HIGH DISCHARGE TEMP. CYLINDER #2
 - 206 HIGH DISCHARGE TEMP. CYLINDER #3
 - 207 HIGH DISCHARGE TEMP. CYLINDER #4
 - 208 SUCTION PRESSURE STG. ONE
 - 209 DISCHARGE PRESSURE STG. ONE
 - 210 DISCHARGE PRESSURE STG. TWO
 - 510 HIGH LIQUID LEVEL SCRUBBER STG. ONE
 - 511 HIGH LIQUID LEVEL SCRUBBER STG. TWO
 - 601 SUCTION CONTROL VALVE SIGNAL
 - 602 AUTO BYPASS VALVE SIGNAL
 - 603 AUTOBLOWDOWN VALVE SIGNAL
- PNEUMATIC TERMINATIONS**
- 70 INSTRUMENT GAS
- ALL PRESSURE TRANSMITTERS, SOLENOIDS & I/P TRANSDUCERS TO BE LOCATED BY PANEL



- GENERAL NOTES**
- INSTRUMENTATION**
 - TEMP. & PRESS. GAUGES SHALL BE DUAL SCALE
 - INSTRUMENT MEDIUM TO BE CLEAN DRY GAS
 - CONTROL PANEL POWERED BY - 24 V DC
 - PROCESS TUBING TO BE 1/4" OD MIN x .035" w.t. 316 SS
 - FITTINGS TO BE 316 SS c/w SS FERRULES
 - INSTRUMENT TUBING TO BE 1/4" OD MIN x .035" w.t. 316 SS
 - FITTINGS TO BE 316 SS c/w SS FERRULES
 - LUBE OIL TUBING TO BE OD 1/4" OD MIN x .035" w.t. 316 SS
 - FITTINGS TO BE 316 SS c/w SS FERRULES
 - TUBING RUNS IN TRAFFIC AREAS SHALL BE PROTECTED WITH REMOVABLE COVER
 - ON SKID N.I. WIRING SHALL BE PROTECTED INSIDE RIGID ALUMINUM CONDUIT
 - PROCESS PIPING**
 - CONSTRUCTED IN ACCORDANCE WITH ANSI B31.3
 - HYDROSTATIC TESTED TO 1.5 x DESIGN PRESS @ AMBIENT
 - CORROSION ALLOWANCE = 0.125 INCHES
 - RADIOGRAPHIC EXAMINATION = FULL (100%)
 - STRESS RELIEVED - 1150 Deg.F / ONE HOUR
 - EXTERNALLY PICKLED
 - INTERNALLY PICKLED AND RUST PROTECTED
 - ALL FLANGED RELIEF VALVES SHALL BE GUSSETED BACK TO PIPING OR VESSEL
 - PIPING TO BE ANCHORED TO STRUCTURAL MEMBER WITH 4 BOLT CLAMPS
 - PROCESS PRESSURE VESSELS**
 - PROCESS SCREWED CONNECTIONS SHALL BE MINIMUM 3000# F.S. THREADEDLETS
 - CONSTRUCTED IN ACCORDANCE WITH ASME SECTION VIII, DIV. 1
 - HYDROSTATIC TESTED TO 1.3 x DESIGN PRESS. @ AMBIENT
 - CORROSION ALLOWANCE = 0.125 INCHES
 - RADIOGRAPHIC EXAMINATION = FULL PER UW 11a, RT-1
 - STRESS RELIEVED - 1150 Deg.F / ONE HOUR
 - EXTERNALLY PICKLED
 - INTERNALLY PICKLED AND RUST PROTECTED
 - VESSEL THREADED CONNECTIONS SHALL BE MINIMUM 6000# F.S. THREADEDLETS
 - CRN'S REQ'D FOR AB, BC, SK
 - NATIONAL BOARD NUMBERS REQ'D
 - STRUCTURAL STEEL**
 - STEP DECK TRAILER "ASPEN" 60 TON, TRI-AXLE
 - 12 WHEEL, AIR RIDE SUSPENSION, 6 DOLLEY LEGS
 - CUSTOMER NOTES**
 - COLOR OF PACKAGE:
 - UNIT WARM GREY
 - GRATING BLACK
 - FULL LOAD NITROGEN TEST RUN REQ'D

REV	DATE	BY	APPR	DESCRIPTION
B	10-09-17	NP	JD	AS BUILT
A	10-07-29	CP	JD	REVISED CONNECTION
0	10-05-20	NP	DR	ISSUED FOR CONSTRUCTION

REVISIONS

BIDELE EQUIPMENT

GAS COMPRESSION

SOUR PROCESS FLOW DIAGRAM (<5% H2S)
 CATERPILLAR G3516LE AFRC / ARIEL JGT/4 / AIR-X-HEMPHILL

CUSTOMER: TALISMAN ENERGY INC.
 LOCATION: TRAILER MOUNTED COMPRESSOR - MOBILE

LSD: PORTABLE JOB#: 10-588

DWN	DATE	SCALE	DWG#	REV
NP	10-05-20	NTS	10-588-700	B