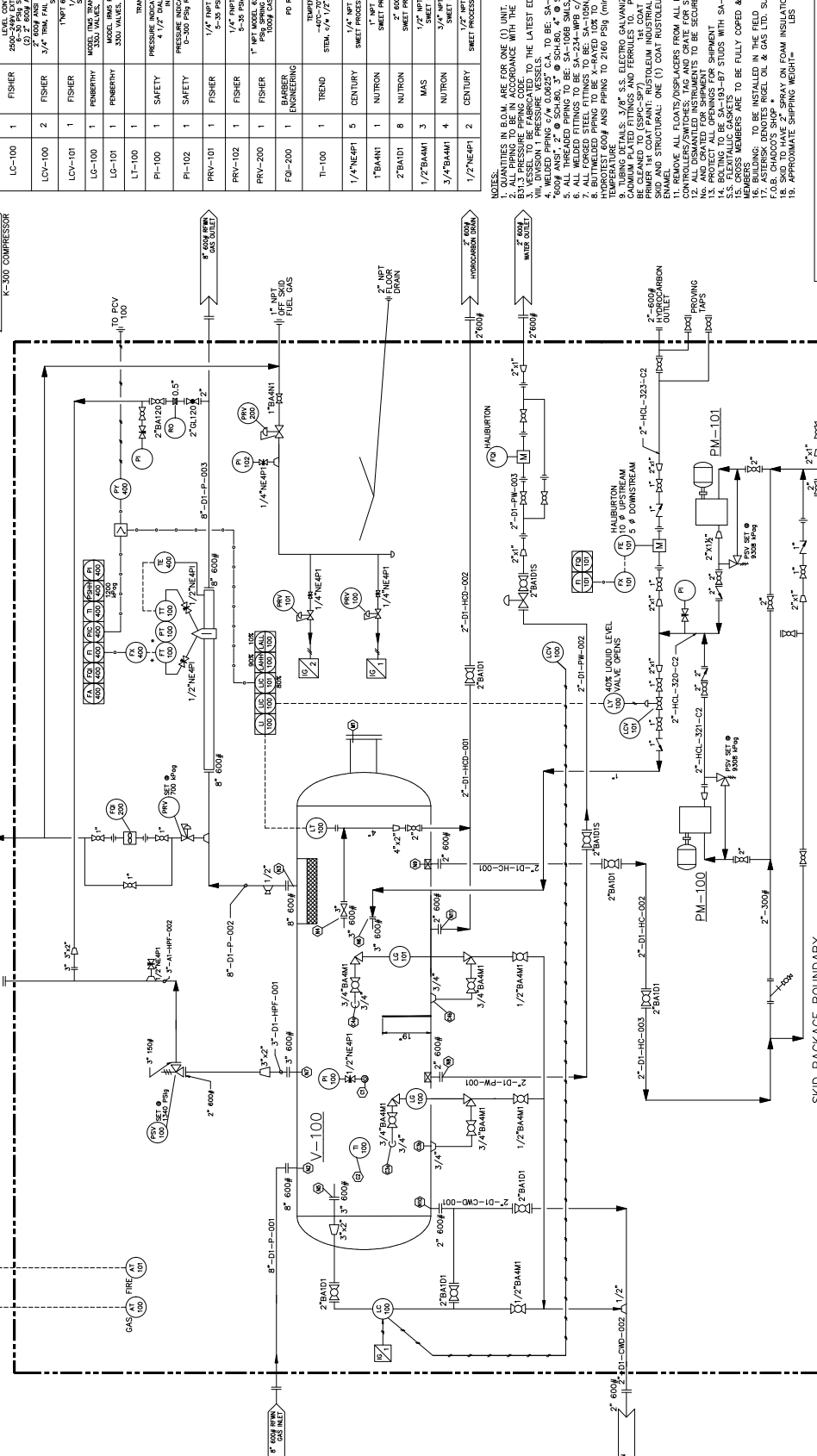


BILL OF MATERIALS

TAG	QTY	MADE	DESCRIPTION
FE-100	1	DANIEL	8" DIA. 3" STROKE PISTON PUMP, ONE (1) 3" 2000P 6/8" STROKE PISTON PUMP, ONE (1) 3" 2000P ORICE PLATE
FR/PR-100	1	N/A	TO BE SUPPLIED BY RIGEL OIL & GAS LTD.
FSV-100	1	FARRIS	3" 1500PSI RIGEL OIL & GAS LTD. 6000 x 3/40 PS 18.5 MILLION CU. FT. 1.7 DAY MODEL#
LC-100	1	FISHER	LEVEL CONTROLLER, 2" 600P BY MODEL 5000-30 PISA SIGNAL, 1/4" DIA. 1/2" DIA. 1/2" DIA. 3/4" DIA. 1/2" DIA. 1/2" DIA. 1/2" DIA. 1/2" DIA.
LCV-100	2	FISHER	3/4" TRIM, FAIL CLOSED, STD. SERVICE, 6-30 PSIG 1/4" TRIM, FAIL OPEN
LCV-101	1	FISHER	1/4" TRIM, FAIL OPEN
LG-100	1	PENBERY	MODEL TRUS TRANSPARENT TYPE LEVEL GAUGE, 6" x 6" 330 VALVES, AND 1/2" BALL VALVE ON DRAIN
LG-101	1	PENBERY	330 VALVES, AND 1/2" BALL VALVE ON DRAIN
LI-100	1	SAFETY	TRANSMITTER, MODEL AT100
PI-100	1	SAFETY	PRESSURE INDICATOR, 1/2" NPT BOTTOM MOUNT x 1/4" NPT TOP MOUNT, INSTALLED ON VESSEL
PI-102	1	SAFETY	PRESSURE INDICATOR, 1/2" NPT BOTTOM MOUNT x 1/4" NPT TOP MOUNT, INSTALLED ON VESSEL
PRV-101	1	FISHER	1/4" NPT MODEL 67 AIR REGULATOR 5-20 PSIG SPRING RANGE, STD. TRIM
PRV-102	1	FISHER	1/4" NPT MODEL 67 AIR REGULATOR 5-20 PSIG SPRING RANGE, STD. TRIM
PRV-200	1	FISHER	1/4" NPT MODEL 67 AIR REGULATOR 5-20 PSIG SPRING RANGE, STD. TRIM
FOI-200	1	BARBER ENGINEERING	FO ROTOR METER 15075
TI-100	1	TREND	TEMPERATURE INDICATOR, 3" DIA. -400-700 F RANGE, DUAL SCALE, 6" STEM, 1/4" 1/2" DIA. 1/2" DIA. 1/2" DIA.
1/4"NEAPI	5	CENTURY	1/4" NPT NEEDLE VALVE, MF, 6000P, ON VESSEL
1"BAANI	1	NUTRON	1" NPT BALL VALVE, P.P., 3000P
2"BAID1	8	NUTRON	2" NPT BALL VALVE, P.P., 3000P
1/2"BAAMI	3	MAS	1/2" NPT BALL VALVE, P.P., 2000P
3/4"BAAMI	4	NUTRON	3/4" NPT BALL VALVE, P.P., 2000P
1/2"NEAPI	2	CENTURY	1/2" NPT NEEDLE VALVE, MF, 6000P SWEET PROCESS, C.S. MODEL #42-3-MAI-B-V



NOTES:

- QUANTITIES IN B.O.M. ARE FOR ONE (1) UNIT.
- ALL PIPING TO BE IN ACCORDANCE WITH THE LATEST EDITION OF ANSI
- ALL INSTRUMENTS TO BE IN ACCORDANCE WITH THE LATEST EDITION OF ISA SECTION
- ALL INSTRUMENTS TO BE FABRICATED TO THE LATEST EDITION OF ASME SECTION VIII, DIVISION 1 PRESSURE VESSELS.
- ALL INSTRUMENTS TO BE SECURELY TAGGED WITH TAG
- 6000 ANST, 2" x 6" SCH.80, 3" x 6" SCH.80, 4" x 6" SCH.80, 6" x 6" SCH.80
- ALL THREADED PIPING TO BE SA-108B SMLS, SCH.80, 6" x 6" SCH.80
- ALL FORGED STEEL FITTINGS TO BE SA-105A, 3000P (100) RATING
- BUTTWELDED STEEL TO BE X-RAYED 100% TO ASME 931.3 AND
- TEMPERATURE # ANSI PIPING TO 240 PSIG (minimum 1" in) AT ROOM
- TUBING DETAILS: 3/8" S.S. ELECTRO GALVANIZED TUBING C/W
- PRIMER 1st COAT PAINT: RUSTOLEUM INDUSTRIAL WARM GREY PRIMER
- PRIMER 2nd COAT PAINT: RUSTOLEUM INDUSTRIAL WARM GREY PRIMER
- ENAMEL
- REMOVE ALL FLOATS/DISPLACERS FROM ALL LEVEL
- ALL INSTRUMENTS TO BE SECURELY TAGGED WITH TAG
- ALL DISMANTLED INSTRUMENTS TO BE SECURELY TAGGED WITH TAG
- ALL INSTRUMENTS TO BE FULLY COATED & WELDED TO MAN
- MEMBERSHIP TO BE INSTALLED IN THE FIELD
- F.O.B. CHAGO'S SHIP
17. ASTERISK DENOTES RIGEL OIL & GAS LTD. SUPPLIED FREE ISSUE
18. APPROXIMATE SHIPPING WEIGHT.

THIS DRAWING REPLACES RIGEL OIL & GAS LTD. DWGR CCL-9857P

SKID PACKAGE BOUNDARY

ENGINEER'S STAMP

REV. NO	REVISIONS	DATE	BY	CHKD	ENG
1	ISSUED FOR CONSTRUCTION (AFTER AFE#545)	03/11/18	JG	02/11/18	BR
2	AS-BUILT (AFTER AFE#550)	03/11/18	AMR	03/28/18	BR

REFERENCE DRAWINGS

NO.	DESCRIPTION
1	ISSUED FOR CONSTRUCTION (AFTER AFE#545)
2	AS-BUILT (AFTER AFE#550)

ENGINEER'S RECORD

NO.	DATE	DESCRIPTION
1	03/11/18	ISSUED FOR CONSTRUCTION (AFTER AFE#545)
2	03/11/18	AS-BUILT (AFTER AFE#550)

FIELD: LOC: SUBJ: ITEM: SERIAL: UNIT: WEIGHT: VOLUME: VALUE

TALISMAN ENERGY

06-02-74-10 W6M
SEPARATOR - 3 PHASE DESIGN

98-C-1283 KNOPICK 06-02 E02 B2 102 2

CAD FILE NO.: N:\TALISMAN\Drawings\KNOPICK\06-02\MECH\W6M060202.dwg

