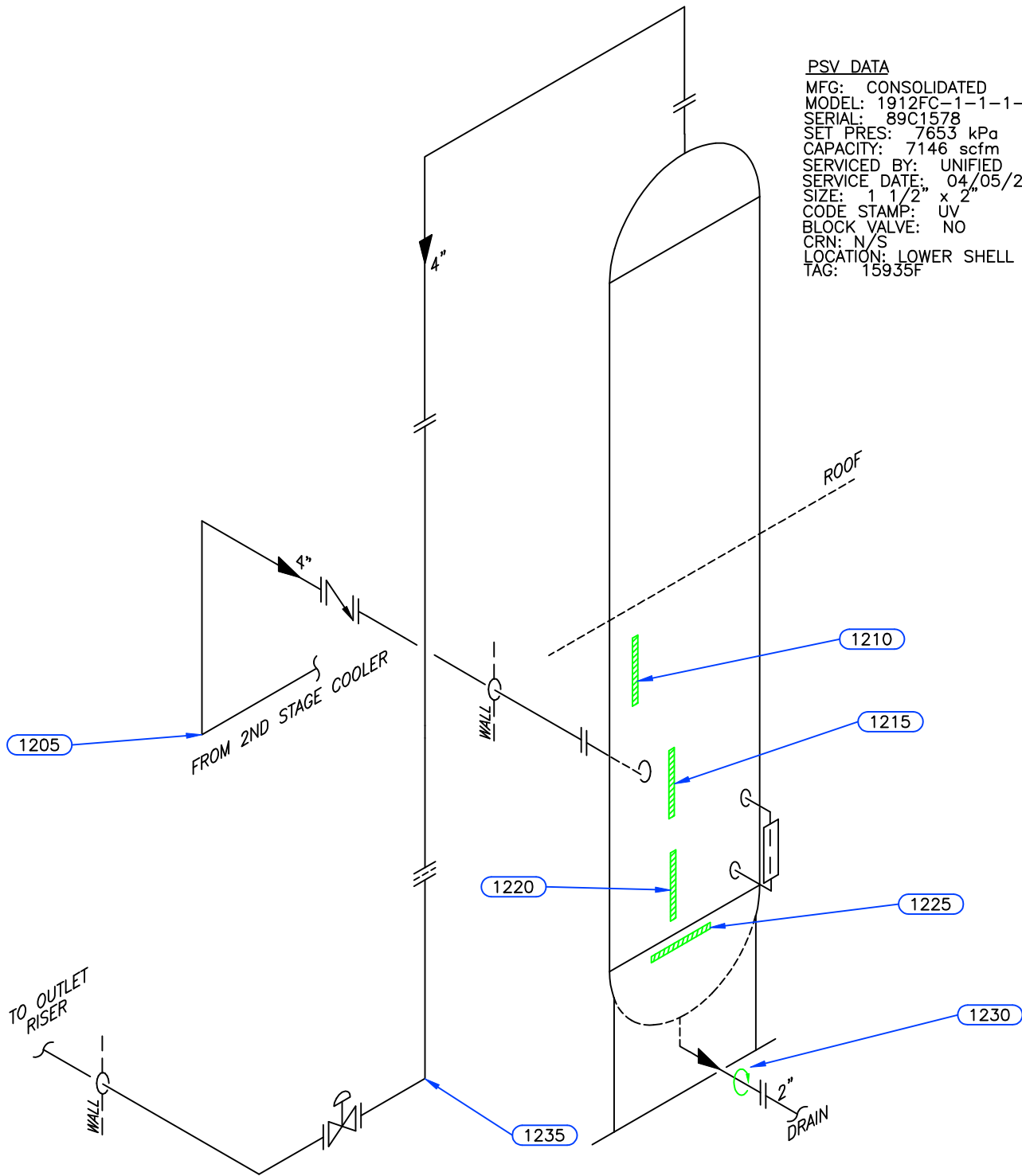


**PSV DATA**

MFG: CONSOLIDATED  
 MODEL: 1912FC-1-1-1-1  
 SERIAL: 89C1578  
 SET PRES: 7653 kPa  
 CAPACITY: 7146 scfm  
 SERVICED BY: UNIFIED  
 SERVICE DATE: 04/05/2010  
 SIZE: 1 1/2" x 2"  
 CODE STAMP: UV  
 BLOCK VALVE: NO  
 CRN: N/S  
 LOCATION: LOWER SHELL  
 TAG: 15935F



Serial No.: 96-8306-OREPL/01-2674-IREP

Equip. No. \_\_\_\_\_ Prov. Reg. No. **Ⓐ 3182406** C.R.N. **M-2316.21** Serial No. \_\_\_\_\_ Yr. Inst. \_\_\_\_\_  
 Code/Div. **ASME VIII DIV 1** Size: **24in x 32ft** Manufacturer: **HANOVER WELLS HALL INC.** Yr. Blt. **1996**  
 C. Stamp: **NO** Service: **SOUR** PWHT: **HT** Radiography: **RT-1** Insulated: **NO**

**Design & Materials Data**

**HEAD:**  
 Top Mat'l. **SA 516 70 N** Top Nom. **27.0 mm** Top C.A. **3.2 mm**  
 Btm. Mat'l. \_\_\_\_\_ Btm. Nom. \_\_\_\_\_ Btm. C.A. \_\_\_\_\_  
**CHANNEL:**  
 Material: \_\_\_\_\_ Nominal: \_\_\_\_\_ C.A. \_\_\_\_\_  
**BOOT**  
 Head Mat'l. \_\_\_\_\_ Head Nom. \_\_\_\_\_ Head C.A. \_\_\_\_\_  
 Shell Mat'l. \_\_\_\_\_ Shell Nom. \_\_\_\_\_ Shell C.A. \_\_\_\_\_  
**SHELL**  
 Material: **SA 516 70 N** Nominal: **28.6 mm** C.A. **3.2 mm**  
 MAWP Shell Side: **9929 kPa** @ Temp. **54°C**  
 MAWP Tube Side: \_\_\_\_\_ @ Temp. \_\_\_\_\_

CLIENT	CANADIAN NATURAL RESOURCES	
FACILITY	LAGARDE COMPRESSOR STATION	
	LSD 1-21-87-15 W6M	
ITEM	GLYCOL CONTACTOR	
BY: LL	DATE: 11/2005	DWG.# 12

# UTS DATA

**CLIENT:** CANADIAN NATURAL RESOURCES  
**EQUIPMENT:** GLYCOL CONTACTOR  
**CRN#:** M-2316.21  
**PROV REG:** A 3182406  
**TESTED ON STREAM**

**FACILITY:** LAGARDE COMPRESSOR STN  
**SERVICE:** SOUR  
**LOCATION:** 01-21-87-15 W6M  
**RTD JOB #:** 05.001766  
**REFER TO DRAWING:** 12

Test Point	THICKNESS DATA					Flag	Crit	C.A.	Nom.	Short Term	Long Term	Ave. mm/py	Flag Date
<b>1210</b>													
Description: MID SHELL													
	2005	9	2008	5	2011	2							
Min. Thick.	29.7		29.1		29.1		25.40	3.2	28.60	0	.11	L	2044
Average:	29.9		29.3		29.3					0	.11	L	2046
Analysis:													
<b>1215</b>													
Description: LOWER SHELL													
	2005	9	2008	5	2011	2							
Min. Thick.	29.8		29.1		29.1		25.40	3.2	28.60	0	.13	L	2039
Average:	30		29.3		29.3					0	.13	L	2041
Analysis:													
<b>1220</b>													
Description: LOWER SHELL													
	2005	9	2008	5	2011	2							
Min. Thick.	29.8		29.3		29.3		25.40	3.2	28.60	0	.09	L	
Average:	30		29.5		29.5					0	.09	L	
Analysis:													
<b>1225</b>													
Description: BOTTOM HEAD													
	2005	9	2008	5	2011	2							
Min. Thick.	30.4		28.1		28.1		23.80	3.2	27.00	0	.42	L	2021
Average:	31		29.1		29.1					0	.35	L	2026
Analysis: 05/2008 MIN SCAN @ SKIRT WELD													
<b>1230</b>													
Description: 2" CIRC. BAND													
	2005	9	2008	5	2011	2							
Min. Thick.	8.8		8.6		8.6		5.50	3.2	8.70	0	.04	L	
Average:	9.2		8.8		8.8					0	.07	L	
Analysis: 2005/09 MIN SCAN AT 9 O'CLOCK POSITION													

# UTS DATA

**CLIENT:** CANADIAN NATURAL RESOURCES  
**EQUIPMENT:** GLYCOL CONTACTOR PIPING  
**CRN#:**  
**PROV REG:**  
**TESTED ON STREAM**

**FACILITY:** LAGARDE COMPRESSOR STN  
**SERVICE:** SOUR  
**LOCATION:** 01-21-87-15 W6M  
**RTD JOB #:** 05.001766  
**REFER TO DRAWING:** 12

Test Point	THICKNESS DATA						Flag	Crit	C.A.	Nom.	Short Term	Long Term	Ave. mm/py	Flag Date
<b>1205</b>														
Description: <b>4" 90° ELBOW</b>														
	2005	9	2008	5	2011	2								
Min. Thick.	7.8		7.5		7.5		7.53	5.3	1.1	8.60	0	.06	L	2011
Average:	8.1		7.7		7.7						0	.07	L	2013
Analysis:														
<hr/>														
<b>1235</b>														
Description: <b>4" 90° ELBOW</b>														
	2005	9	2008	5	2011	2								
Min. Thick.	8.1		8		8		7.53		1.1	8.60	0	.02	L	2036
Average:	8.3		8.3		8.3						0	0	L	
Analysis:														
<hr/>														
<hr/>														
<hr/>														
<hr/>														