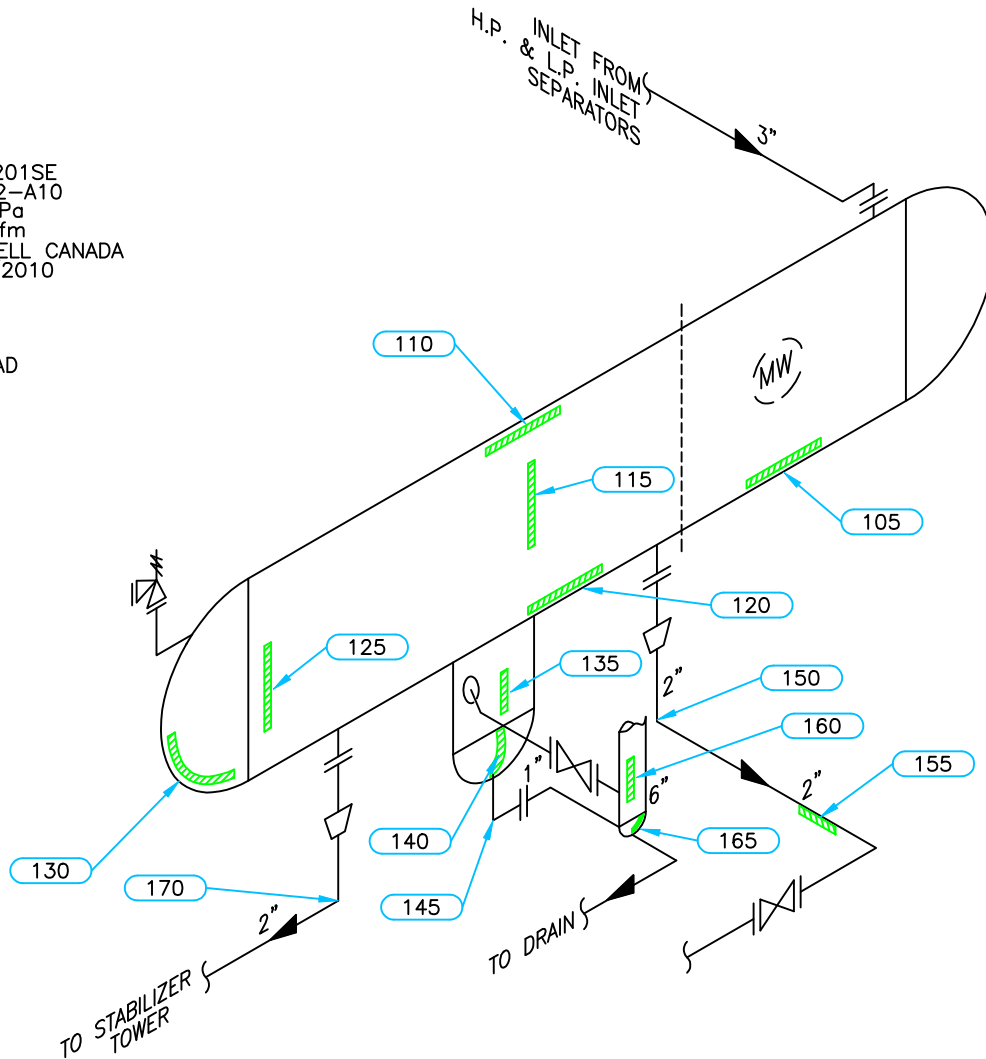


**PSV DATA**  
 MFG: FARRIS  
 MODEL: 26JA13-1201SE  
 SERIAL: CE44007-2-A10  
 SET PRES: 2069 kPa  
 CAPACITY: 4622 scfm  
 SERVICED BY: POWELL CANADA  
 SERVICE DATE: 09/2010  
 SIZE: 2" x 3"  
 CODE STAMP: UV  
 BLOCK VALVE: NO  
 CRN: 0203.742  
 LOCATION: TOP HEAD  
 TAG: 0202-V3



Equip. No. \_\_\_\_\_ Prov. Reg. No. **3129683** C.R.N. **N-0043.2** Serial No. **95C-3278-3000** Yr. Inst. \_\_\_\_\_  
 Code/Div. **ASME VIII, Div 1** Size: **84in x 24ft** Manufacturer: **MALONEY STEEL** Yr. Blt. **1995**  
 C. Stamp: **U** Service: **SOUR** PWHT: **HT** Radiography: **RT-1** Insulated: **YES**

**Design & Materials Data**

**HEAD:**  
 Top Mat'l. **SA 516 70** Top Nom. **23.6mm** Top C.A. **3.2mm**  
 Btm. Mat'l. \_\_\_\_\_ Btm. Nom. \_\_\_\_\_ Btm. C.A. \_\_\_\_\_  
**CHANNEL:**  
 Material: \_\_\_\_\_ Nominal: \_\_\_\_\_ C.A. \_\_\_\_\_  
**BOOT**  
 Head Mat'l. \_\_\_\_\_ Head Nom. \_\_\_\_\_ Head C.A. \_\_\_\_\_  
 Shell Mat'l. \_\_\_\_\_ Shell Nom. \_\_\_\_\_ Shell C.A. \_\_\_\_\_  
**SHELL**  
 Material: **SA 516 70** Nominal: **22.2mm** C.A. **3.2mm**  
 MAWP Shell Side: **2069 kPa** @ Temp. **38°C**  
 MAWP Tube Side: \_\_\_\_\_ @ Temp. \_\_\_\_\_

CLIENT	CANADIAN NATURAL RESOURCES LTD	
FACILITY	CLEARHILLS GAS PLANT AREA 200 STABILIZATION SYSTEMS LSD 16-11-88-13 W6M	
ITEM	STABILIZER FEED DRUM	
BY: AM	DATE: 04/2005	DWG.# 1

# UTS DATA

**CLIENT:** CANADIAN NATURAL RESOURCES  
**EQUIPMENT:** STABILIZER FEED DRUM  
**CRN#:** N-0043.2  
**PROV REG:** A 3129683  
**TESTED ON STREAM**

**FACILITY:** CLEARHILLS GAS PLANT AREA 200  
**SERVICE:** SOUR  
**LOCATION:** 16-11-88-13 W6M  
**RTD JOB #:** 105.00642  
**REFER TO DRAWING:** 1

Test Point	THICKNESS DATA								Flag	T-Min	C.A.	Nom.	Short Term	Long Term	Ave. mm/py	Retirement Date
105	Description: BOTTOM SHELL															
	2005	4	2007	6	2010	7	2013	3								
Min. Thick.	22.5		22.5		22.5		22.5		19.00		3.2	22.20	0		0	
Average:	22.6		22.6		22.6		22.6						0		0	
Analysis:																
110	Description: TOP SHELL															
	2005	4	2007	6	2010	7	2013	3								
Min. Thick.	22.8		22.8		22.8		22.8		19.00		3.2	22.20	0		0	
Average:	23.1		23.1		23.1		23.1						0		0	
Analysis:																
115	Description: MID SHELL															
	2005	4	2007	6	2010	7	2013	3								
Min. Thick.	23		23		23		23		19.00		3.2	22.20	0		0	
Average:	23.2		23.2		23.2		23.2						0		0	
Analysis:																
120	Description: BOTTOM SHELL															
	2005	4	2006	7	2010	7	2013	3								
Min. Thick.	22.5		22.5		22.5		22.5		19.00		3.2	22.20	0		0	
Average:	22.6		22.6		22.6		22.6						0		0	
Analysis:																
125	Description: LOWER SHELL															
	2005	4	2007	6	2010	7	2013	3								
Min. Thick.	22.9		22.9		22.9		22.9		19.00		3.2	22.20	0		0	
Average:	23.1		23.1		23.1		23.1						0		0	
Analysis:																
130	Description: BOTTOM HEAD															
	2005	4	2007	6	2010	7	2013	3								
Min. Thick.	26		26		26		26		20.40		3.2	23.60	0		0	
Average:	26.5		26.5		26.5		26.5						0		0	
Analysis:	2007/06 MIN SCAN AT START OF BAND.															

# UTS DATA

**CLIENT:** CANADIAN NATURAL RESOURCES  
**EQUIPMENT:** STABILIZER FEED DRUM  
**CRN#:** N-0043.2  
**PROV REG:** A 3129683  
**TESTED ON STREAM**

**FACILITY:** CLEARHILLS GAS PLANT AREA 200  
**SERVICE:** SOUR  
**LOCATION:** 16-11-88-13 W6M  
**RTD JOB #:** 105.00642  
**REFER TO DRAWING:** 1

Test Point	THICKNESS DATA								Flag	T-Min	C.A.	Nom.	Short Term	Long Term	Ave. mm/py	Retirement Date	
135	Description: LOWER SHELL ON BOOT																
	2005	4	2007	6	2010	7	2013	3									
Min. Thick.	17.2		17.2		17.2		17.2		0.00				0		0		
Average:	17.6		17.6		17.6		17.6						0		0		
Analysis:	2005-04 MIN SCAN AT MID BAND.																
140	Description: LOWER HEAD ON BOOT																
	2005	4	2007	6	2010	7	2013	3									
Min. Thick.	12.3		11.9		11.9		11.9		0.00				0		.05		
Average:	12.7		12.4		12.4		12.4						0		.04		
Analysis:	2007/06 MIN SCAN AT NOZZLE.																
160	Description: LOWER SHELL ON BOOT																
	2005	4	2007	6	2010	7	2013	3									
Min. Thick.	11.4		11.4		11.4		11.4		0.00				0		0		
Average:	11.7		11.7		11.7		11.7						0		0		
Analysis:																	
165	Description: LOWER HEAD ON BOOT																
	2005	4	2007	6	2010	7	2013	3									
Min. Thick.	9.5		9.5		9.5		9.5		0.00				0		0		
Average:	9.8		9.8		9.8		9.8						0		0		
Analysis:																	

# UTS DATA

**CLIENT:** CANADIAN NATURAL RESOURCES  
**EQUIPMENT:** STABILIZER FEED DRUM PIPING  
**CRN#:**  
**PROV REG:**  
**TESTED ON STREAM**

**FACILITY:** CLEARHILLS GAS PLANT AREA 200  
**SERVICE:** SOUR  
**LOCATION:** 16-11-88-13 W6M  
**RTD JOB #:** 105.00642  
**REFER TO DRAWING:** 1

Test Point	THICKNESS DATA								Flag	T-Min	C.A.	Nom.	Short Term	Long Term	Ave. mm/py	Retirement Date
145																
Description:	1" 90° ELBOW															
	2005	4	2007	6	2010	7	2013	3								
Min. Thick.	7.6		7.6		7.6		7.6		5.60		.8	6.40	0		0	
Average:	7.9		7.9		7.9		7.9						0		0	
Analysis:	2007/06 MINOR CORROSION AT MID BAND															
150																
Description:	2" 90° ELBOW															
	2005	4	2007	6	2010	7	2013	3								
Min. Thick.	3.9		3.6		3.4		3.4		3.41	1.6	.5	3.90	0		.06	
Average:	4.1		3.9		3.5		3.5						0		.08	
Analysis:	2007/06 CRITICAL THICKNESS CALCULATIONS CARRIED OUT TO 0.6mm BUT CODE MINIMUM IS MAINTAINED AT 1.6mm. 2013/03 RETIREMENT DATE:2078.															
155																
Description:	2" BAND															
	2005	4	2007	6	2010	7	2013	3								
Min. Thick.	3.7		3.7		3.7		3.7		3.41		.5	3.90	0		0	
Average:	3.9		3.9		3.9		3.9						0		0	
Analysis:																
170																
Description:	2" 90° ELBOW															
	2005	4	2007	6	2010	7	2013	3								
Min. Thick.	3.7		3.4		3.2		3.2		3.41	1.6	.5	3.90	0		.06	
Average:	3.9		3.7		3.4		3.4						0		.06	
Analysis:	2007/06 CRITICAL THICKNESS CALCULATIONS CARRIED OUT TO 0.6mm BUT CODE MINIMUM IS MAINTAINED AT 1.6mm. 2013/03 RETIREMENT DATE: 2054.															