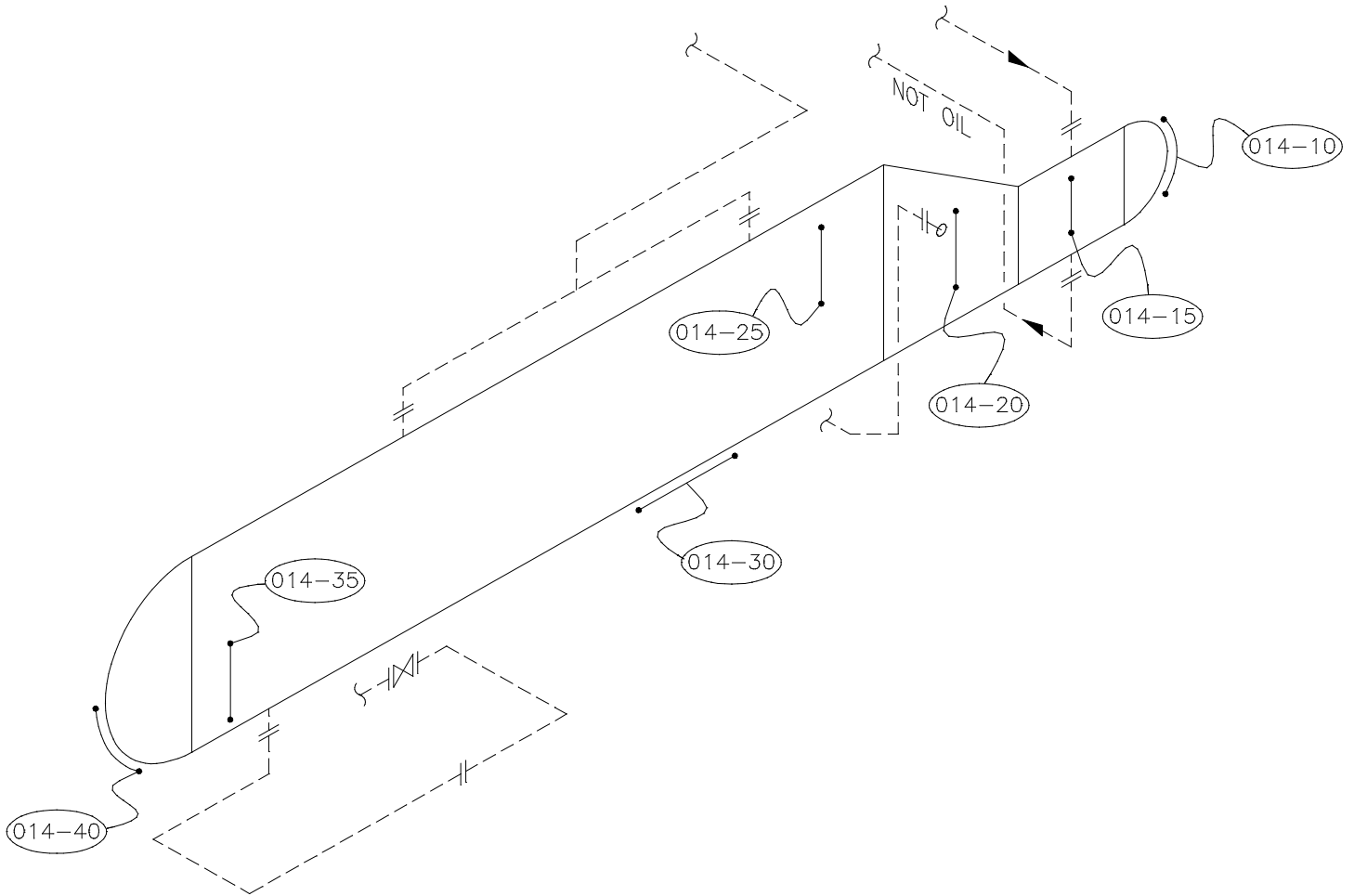


P&ID. # _____
REF. # _____



VESSEL DATA

P.E. No. E-15 Serial No. 82-1164 Prov. Reg. No. A0179816 C.R.N. E5734.2
MFR. EXCHANGER Code/Div. ASME VIII DIV.1 Para UW 11A/B Code Stamp U
Yr. Bilt. 1982 M/W (Y/N) N/S Size _____ Service SWEET PWHT N/S
RT 4 Insulated YES

Nominal Thickness & Material

Head: 14.3mm Mat'l: N/S C.A.: 1.6mm
Head: _____
Shell: 14.3mm SA-516-70N 1.6mm
Shell: _____
Chan Hd: _____
Chan Sh: 8.3mm SA-106-B
Boot Hd: _____
Boot Sh: _____

MAWP Shell Side 500PSI @ Temp. 500°F
MAWP Tube Side 150PSI @ Temp. 500°F

COMMENTS: 2011/02 - OUT OF SERVICE

Repairs _____
Reason _____
Reason _____

APACHE CORPORATION
CHINCHAGA GAS PLANT #2
LSD 01-24-096-05W6M

DE-ETHANIZER REBOILER

TECH.: M.M.	REV. DATE: 2011/02	DWG DATE: 2002/12
CAD: A.L.	REVISION: 2	DRAWING: 014