

T-101
METHANOL TANK

H-101
BUILDING HEATER
DUTY: 12000 BTU
FUEL: PROPANE
VOLTAGE: 12 VDC
c/w 25' STARTER CABLES

P-101
METHANOL INJECTION PUMP
MAKE: TEXTTEAM
MODEL: 5115LP
SIZE: 1/2" PLUNGER
RATE: 83 LPD (22 GPD)
DP: 24115 kPa (3500 PSI)

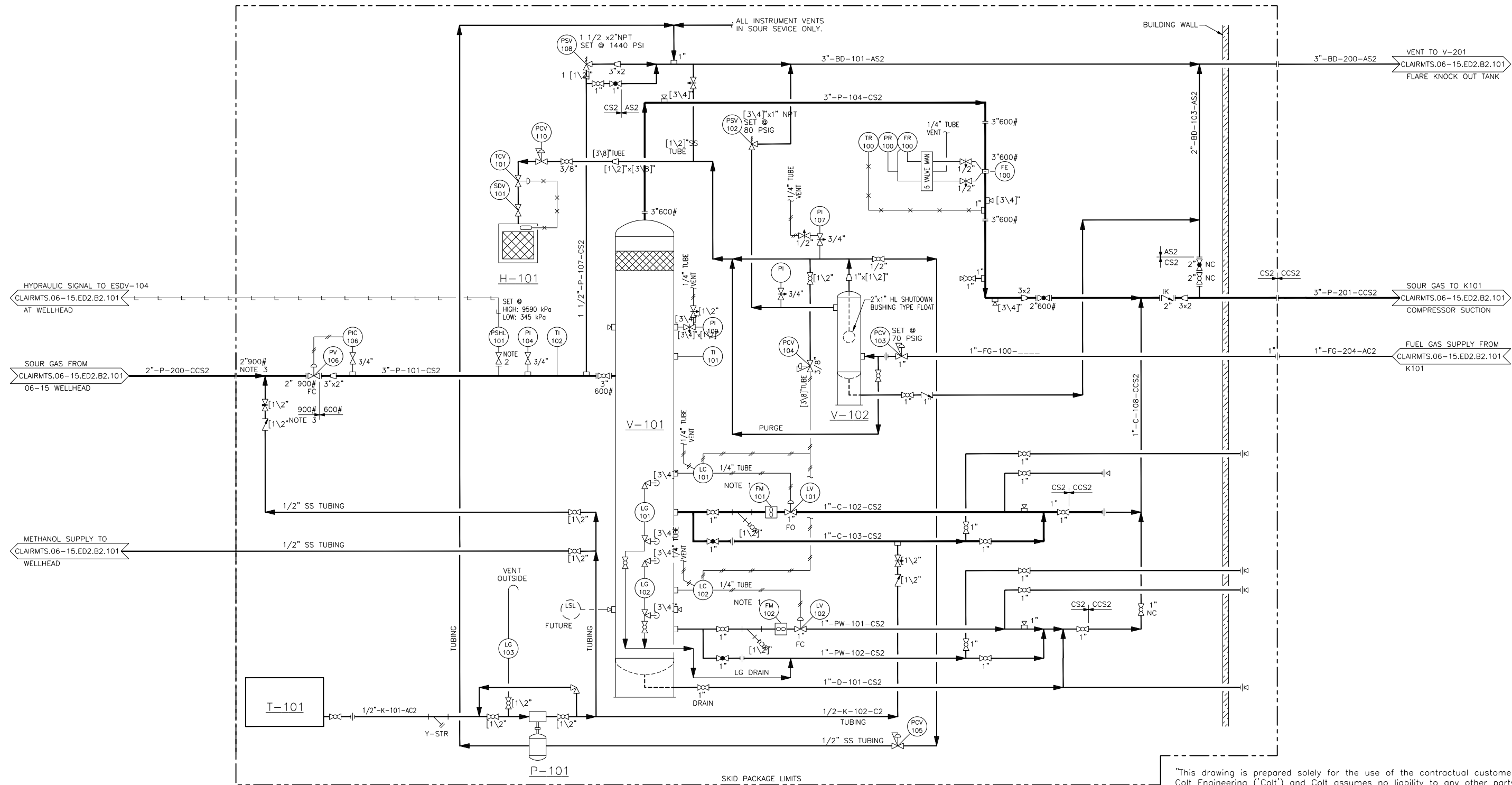
V-101
SEPARATOR
TYPE: 3 PHASE MESH
SIZE: 20"OD x 7'-6"S/LG
DESIGN: 1440 PSIG @ 100°F

V-102
FUEL GAS SCRUBBER
SIZE: 6 5/8"OD x 30"LG
DESIGN: 400 PSIG MAWP @ 300°F

T-101
PRODUCED WATER TANK
FUTURE

L-101
PIG LAUNCHER
SIZE: 6"x4"

F-101
VENT STACK
SIZE: 8" x 40"
c/w: INTEGRAL KNOCKOUT AND SHOT TUBE



"This drawing is prepared solely for the use of the contractual customer of Colt Engineering ('Colt') and Colt assumes no liability to any other party for any representations contained in this drawing."

- NOTES:
- UNIONS FOR FLOWMETER REMOVAL ON LIQUID LINES TO BE FLAT FACED, VITON O' RING.
 - PRESSURE PILOT c/w SELF CONTAINED HYDRAULIC ASSEMBLY, 24VDC SOLENOID VALVE AND 2" 600RF x 2" NPT ISOLATOR VALVE.
 - OUT OF SPEC MATING FLANGES.

NO	REVISIONS	DATE	CKD	ENG	TLM
1	AS BUILT	99.04.30	MGA		
0	ISSUED FOR CONSTRUCTION	99.02.16	SDS	KE	KW
A	ISSUED FOR APPROVAL	99.01.28	SDS	KE	KW

STAMP

PERMIT TO PRACTICE
COLT ENGINEERING CORPORATION
Signature _____
Date _____
PERMIT NUMBER: P 725
The Association of Professional Engineers,
Geologists and Geophysicists of Alberta

ENGINEER'S STAMP

ENG. RECORD	Y/M/DO
DRAWN BY: CDH	99.01.05
CHECK BY: K. EDWARDS	99.02.10
ENGINEER: K. WEGMANN	99.02.16
TLM APPROVAL:	

ENG. RECORD

colt engineering corporation
consulting engineers

TALISMAN ENERGY

FIELD: CLAIRMONT SOUTH
LOC: 06-15-72-5 W6M
SUBJ: PIPING AND INSTRUMENTATION DIAGRAM
ITEM: S101 WELLSITE SEPARATOR/METER SKID

SCALE: N.T.S. COLT JOB: 98-C-1226 FIELD: CLAIRMTS LOC: 06-15 CAT: ED2 SUB: B2 SERIAL: 103 REV: 1

CAD DRAWING FILE NO. \\N:\TALISMAN\DRAWINGS\CLAIRMTS\06-15\MECH\PID\0615203

NUMBER REFERENCE DRAWING REV. NO

FILE: CLAIRMTS 06-15 06-15-72-5 W6M ED2 B2 103