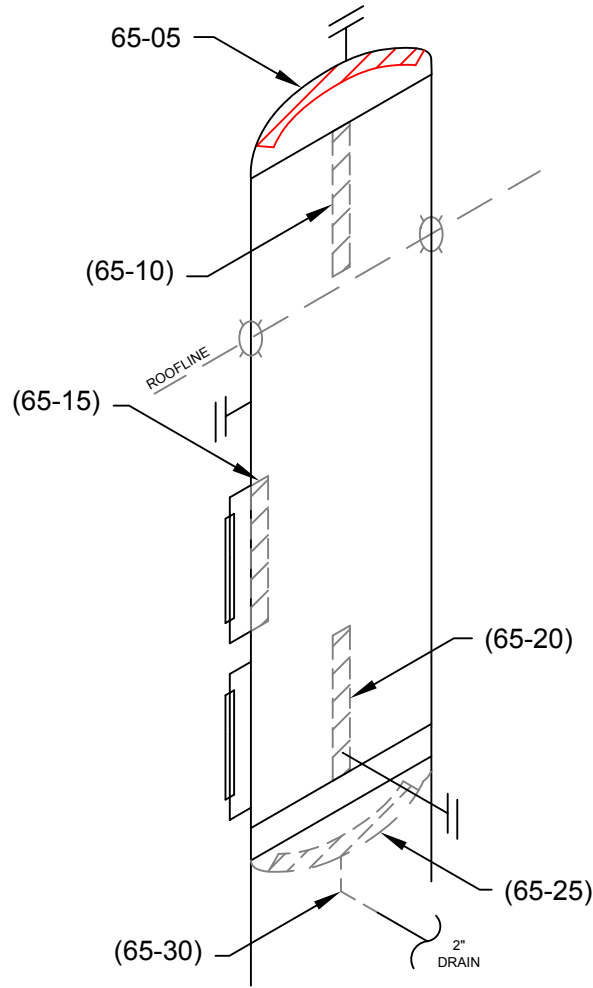


ITEM:

SEPARATOR

A 0454184



STETTLER, AB (403) 742-4868
 LACOMBE, AB (403) 782-7855
 BROOKS, AB (403) 501-8029
 GRANDE PRAIRIE, AB (866) 422-9732

TECHNICIAN:
 PAUL MATTHEWS
 SNT LEVEL II
 CGSB 48.9712
 LEVEL II # 10438

DATE: **02/11/11** DWG # **65**

CLIENT: **CNRL**

LSD: **06-15-072-05-W6M**

INSPECTOR : AJ KHAN

LOCATION : CLAIRMONT

DISTRICT UNIT : TEEPEE CREEK

BLDG/SKID : SKD0458

PROCESS : SOUR

CODE : ASME SEC VIII DIV 1

SPECIFICATION : AS PER ASME SE 797

TECHNIQUE : UT 1-1, REV .1

METHOD : UT CONTINUOUS / A SCAN

SURFACE COND : PAINTED

SURFACE TEMP : AMBIENT

VESSEL INFORMATION

VESSEL # : **A 0454184**

CRN # : K0138.123

SERIAL # : VS-9632

MANUFACTURER : LARSEN & D'AMICO

DATE BUILT : 2000

CLIENT ID / TAG : -

M.A.W.P. : 1440 PSI

M.A.W.T. : 100 °F

JOINT EFFICIENCY/RT : N/A

STRESS RELIEVED : NO

INSULATED : NO

MANWAY : NO

VESSEL SPECIFICATIONS

	OD	NOMINAL	MATERIAL	CA
VESSEL HEAD	24"	1.080"	SA-516-70	.125"
VESSEL SHELL	24"	1.125"	SA-516-70	.125"
BOOT HEAD	-	-	-	-
BOOT SHELL	-	-	-	-

COMMENTS:

PROJECT:
C90046



ULTRASONIC CORROSION SURVEY

Survey Name: CNRL

LSD: 06-15-072-05W6	Dwg: 65	Vessel Number: A0454184	Manufacturer: LARSEN & D'AMICO	Survey Date: 2/11/11
District Unit: TEEPEE CREEK		Vessel Name: SEPARATOR	Serial Number: VS-9632	Inspector: AJ KHAN
Location: CLAIRMONT		Year Built: 2000	Shell MAWP PSI: 1440 MAWT F: 100	Process: SOUR
Skid: SKD0458		Tag Number: -	Tube MAWP PSI: 0 MAWT F: 0	Project #: C90046
		CRN: K0138.123	Vessel CA: 0.1250	

Band	Description			Readings						Year	Avg Inches	Min Inches	Nominal	CA	TMIN	Recommended Next Inspection	Recommended Retirement Date
				1	2	3	4	5	6								
65-05	Top	Head	Baseline	1.105	1.104	1.103	1.105	1.107	1.107	2008	1.105	1.103	1.0800	0.1250	0.7919	2012	2031
Shape	Ellipsoidal	Shell Side	Previous	1.105	1.104	1.103	1.105	1.107	1.107	2008	1.105	1.103	Comments-->				
OD	24		Current	1.101	1.100	1.099	1.105	1.102	1.102	2011	1.102	1.099					
Spec.	VIII Div 1									ST Loss MPY	0.001	OK					
Material	SA 516 - 70									LT Loss MPY	0.001						
65-10	Upper	Shell	Baseline	1.137	1.135	1.135	1.135	1.128	1.137	2008	1.135	1.128	1.1250	0.1250	0.8184	2012	2031
Shape	Cylindrical	Shell Side	Previous	1.137	1.135	1.135	1.135	1.128	1.137	2008	1.135	1.128	Comments-->				
OD	24		Current	1.137	1.135	1.135	1.135	1.128	1.137	2011	1.135	1.128					
Spec.	VIII Div 1									ST Loss MPY	0.000	OK					
Material	SA 516 - 70									LT Loss MPY	0.000						
65-15	Mid	Shell	Baseline	1.155	1.152	1.150	1.151	1.149	1.149	2008	1.151	1.149	1.1250	0.1250	0.8184	2012	2031
Shape	Cylindrical	Shell Side	Previous	1.155	1.152	1.150	1.151	1.149	1.149	2008	1.151	1.149	Comments-->				
OD	24		Current	1.144	1.144	1.144	1.147	1.147	1.147	2011	1.146	1.144					
Spec.	VIII Div 1									ST Loss MPY	0.002	OK					
Material	SA 516 - 70									LT Loss MPY	0.002						
65-20	Lower	Shell	Baseline	1.148	1.146	1.152	1.150	1.151	1.150	2008	1.150	1.146	1.1250	0.1250	0.8184	2012	2031
Shape	Cylindrical	Shell Side	Previous	1.148	1.146	1.152	1.150	1.151	1.150	2008	1.150	1.146	Comments-->				
OD	24		Current	1.148	1.146	1.133	1.140	1.148	1.149	2011	1.144	1.133					
Spec.	VIII Div 1									ST Loss MPY	0.004	OK					
Material	SA 516 - 70									LT Loss MPY	0.004						



ULTRASONIC CORROSION SURVEY

Survey Name: CNRL

LSD: 06-15-072-05W6	Dwg: 65	Vessel Number: A0454184	Manufacturer: LARSEN & D'AMICO	Survey Date: 2/11/11
District Unit: TEEPEE CREEK		Vessel Name: SEPARATOR	Serial Number: VS-9632	Inspector: AJ KHAN
Location: CLAIRMONT		Year Built: 2000	Shell MAWP PSI: 1440 MAWT F: 100	Process: SOUR
Skid: SKD0458		Tag Number: -	Tube MAWP PSI: 0 MAWT F: 0	Project #: C90046
		CRN: K0138.123	Vessel CA: 0.1250	

Band	Description			Readings						Year	Avg Inches	Min Inches	Nominal	CA	TMIN	Recommended Next Inspection	Recommended Retirement Date	
				1	2	3	4	5	6									
65-25	Bottom	Head	Baseline	1.102	1.105	1.103	1.105	1.102	1.100	2008	1.103	1.100	1.0000	0.1250	0.7977	2012	2031	
Shape	Ellipsoidal	Shell Side	Previous	1.102	1.105	1.103	1.105	1.102	1.100	2008	1.103	1.100	Comments-->					
OD	24		Current	1.098	1.103	1.098	1.099	1.098	1.099	2011	1.099	1.098						
Spec.	VIII Div 1									ST Loss MPY	0.001	OK						
Material	SA 516 - 70									LT Loss MPY	0.001							
65-30	Drain	Nozzle	Baseline	0.321	0.308	0.311	0.306	0.310	0.311	2008	0.311	0.306	0.3430	0.1250	0.0749	2012	2031	
Shape	90° Elbow	Shell Side	Previous														Comments-->	
OD	2.375		Current	0.321	0.308	0.311	0.306	0.310	0.311	2008	0.311	0.306						
Spec.	VIII Div 1									ST Loss MPY		OK						
Material	SA 234 - WPB									LT Loss MPY	0.000							
65-35		Piping	Baseline	0.285	0.283	0.279	0.282	0.281	0.287	2008	0.283	0.279	0.3000	0.0375	0.1216	2012	2031	
Shape	90° Elbow	Shell Side	Previous														Comments-->	
OD	3.5		Current	0.285	0.283	0.279	0.282	0.281	0.287	2008	0.283	0.279						
Spec.	B31.3									ST Loss MPY		OK						
Material	A 234 - WPB									LT Loss MPY	0.000							
65-40		Piping	Baseline	0.289	0.277	0.276	0.278	0.281	0.286	2008	0.281	0.276	0.3000	0.0375	0.1216	2012	2031	
Shape	90° Elbow	Shell Side	Previous	0.289	0.277	0.276	0.278	0.281	0.286	2008	0.281	0.276	Comments-->					
OD	3.5		Current	0.289	0.277	0.276	0.278	0.281	0.286	2011	0.281	0.276						
Spec.	B31.3									ST Loss MPY	0.000	OK						
Material	A 234 - WPB									LT Loss MPY	0.000							



ULTRASONIC CORROSION SURVEY

Survey Name: CNRL

LSD: 06-15-072-05W6	Dwg: 65	Vessel Number: A0454184	Manufacturer: LARSEN & D'AMICO	Survey Date: 2/11/11
District Unit: TEEPEE CREEK		Vessel Name: SEPARATOR	Serial Number: VS-9632	Inspector: AJ KHAN
Location: CLAIRMONT		Year Built: 2000	Shell MAWP PSI: 1440 MAWT F: 100	Process: SOUR
Skid: SKD0458		Tag Number: -	Tube MAWP PSI: 0 MAWT F: 0	Project #: C90046
		CRN: K0138.123	Vessel CA: 0.1250	

Band	Description		Readings						Year	Avg Inches	Min Inches	Nominal	CA	TMIN	Recommended Next Inspection	Recommended Retirement Date
			1	2	3	4	5	6								
65-45	Piping	Baseline	0.269	0.267	0.272	0.281	0.270	0.291	2008	0.275	0.267	0.3000	0.0375	0.1216	2012	2031
Shape	90° Elbow	Shell Side	Previous	0.269	0.267	0.272	0.281	0.270	2008	0.275	0.267	Comments-->				
OD	3.5		Current	0.269	0.267	0.272	0.281	0.270	2011	0.275	0.267					
Spec.	B31.3									ST Loss MPY	0.000	OK				
Material	A 234 - WPB									LT Loss MPY	0.000					
65-50	Piping	Baseline	0.316	0.307	0.309	0.307	0.307	0.309	2008	0.309	0.307	0.3000	0.0375	0.1216	2012	2031
Shape	90° Elbow	Shell Side	Previous	0.316	0.307	0.309	0.307	0.307	2008	0.309	0.307	Comments-->				
OD	3.5		Current	0.314	0.307	0.307	0.307	0.307	2011	0.309	0.307					
Spec.	B31.3									ST Loss MPY	0.000	OK				
Material	A 234 - WPB									LT Loss MPY	0.000					
65-55	Piping	Baseline	0.180	0.182	0.183	0.186	0.189	0.195	2008	0.186	0.180	0.2180	0.0272	0.0825	2012	2031
Shape	90° Elbow	Shell Side	Previous									Comments-->				
OD	2.375		Current	0.180	0.182	0.183	0.186	0.189	2008	0.186	0.180					
Spec.	B31.3									ST Loss MPY		Caution				
Material	A 234 - WPB									LT Loss MPY	0.000					